



DHL EXPRESS

SERVICE & RATE GUIDE 2024

HUNGARY

GET STARTED

[Connecting Your World](#)

[Dear Customer](#)

[Sustainability](#)

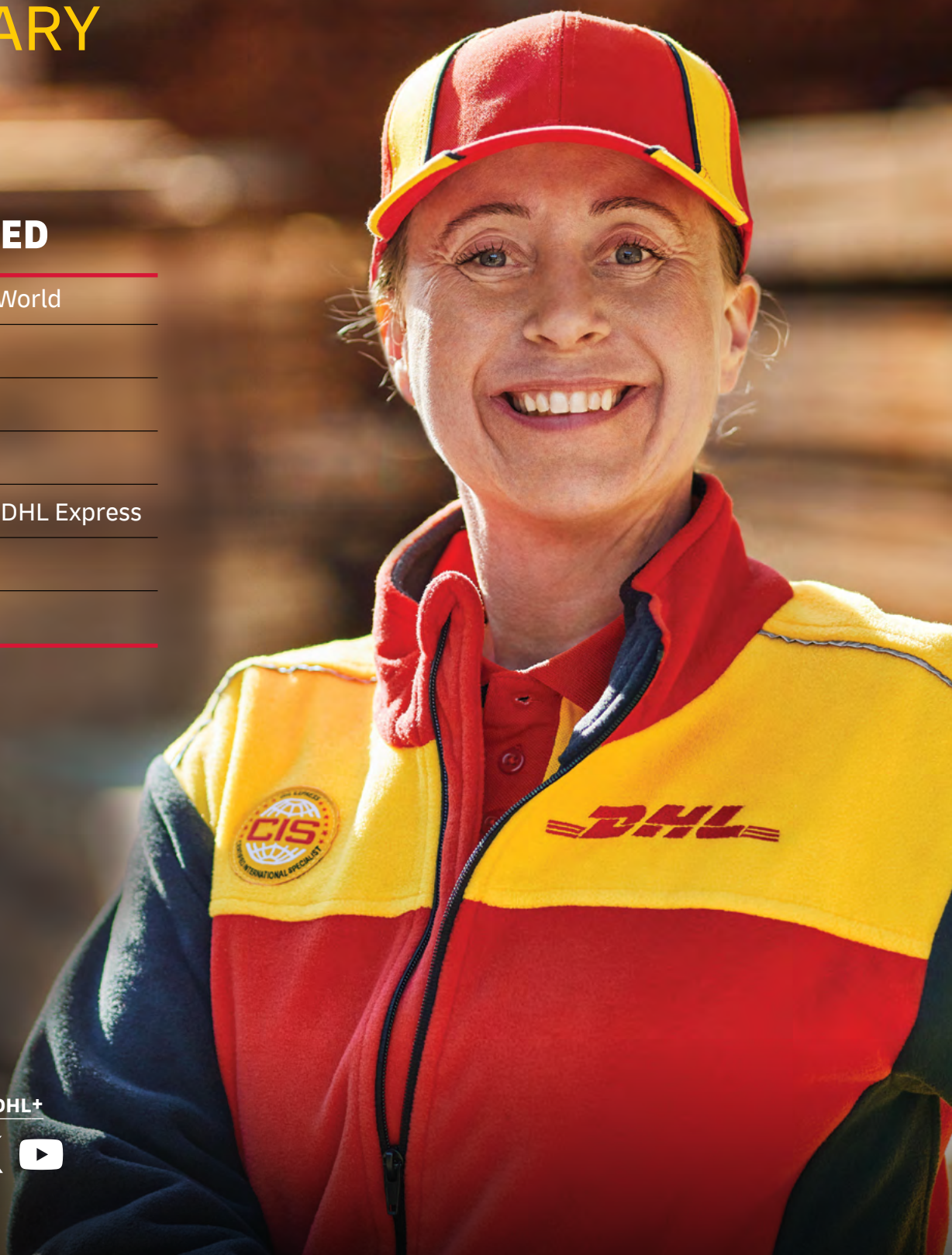
[Service Offering](#)

[How to Ship with DHL Express](#)

[Digitalization](#)

[Zones and Rates](#)

Ready to ship?
Get a quote from [MyDHL+](#)



CONNECTING YOUR WORLD

220
countries and
territories served



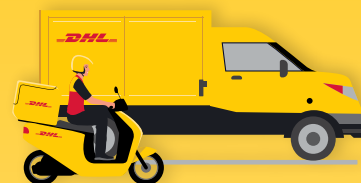
3.500
facilities

500+
airports served
worldwide



300+
aircraft

2.400+
flights per day



34.500
vehicles



148.000
Service Points

By the year 2050, DHL
Group aims to achieve
net zero emissions
logistics

MISSION 2050
ZERO EMISSIONS
GOGREEN

296
million

Time Definite shipments
per year



120.000
employees



415

TAPA* certifications



Figures are global and are approximate as of the end of 2022
*TAPA = Transported Asset Protection Association

DEAR CUSTOMER

Welcome to the DHL Express Service and Rate Guide for 2024. If you are reading this, it means you have a personal or business need to move something, from somewhere, to somewhere and you want it done quickly, securely and reliably. We are here to help you!

As the global market leader in Time Definite International (TDI) shipping and courier delivery, and the most international company in the world, this is what we do! We move over 1 million shipments every working day, from point A to point B in 220 countries and territories, as quickly, securely and reliably as possible and with as much transparency as possible. Over 2,5 million customers around the world put their trust in us, and our team of 120.000+ Certified International Specialists strive to exceed their expectations on every single shipment.

Global logistics appears to be finally seeing the end of COVID-driven disruptions but yet is not completely back to the 'normal' of the previous time period. Overall, the global macroeconomic situation has started to stabilize although uncertainty remains. Aviation networks remain volatile in many parts of the world and the crisis in Europe continues to add complexity to global logistics. In the face of these and other challenges, we have continued to invest in safeguarding the resilience of our global network, which enables us to provide secure and reliable supply chain solutions to support our customers.

Sustainability continues to grow in focus in all logistics conversations and I invite you to learn how our [GoGreen Plus](#) service, introduced in 2023, and our leveraging of Sustainable Aviation Fuel (SAF) can directly help make your products more environmentally friendly – a growing criterion in the purchase decision process of both individual consumers and businesses.

Digitalization retains its laser focus at DHL and we have brought to market a slew of tools to support our customers, in particular small businesses. For example, the new [My Global Trade Services tool](#) aims to reduce customs complexity and improve getting clearance 'first time right!'. The [DHL Express Commerce tool](#) can help small businesses fast-forward taking their online sales channels international. Small business owners, let us help support your growth by enabling you to Save More as you Ship More! You could benefit from our **Dynamic Discounting** commercial options. Interested? [Let's connect!](#)

In conclusion, please use this guide to learn how DHL Express products, services and tools can meet your logistics needs. **Thank you** for trusting us to be your Logistics Partner of Choice. Tell us how we can support your growth: reach out to us on [MyDHL+](#) or by calling Customer Service on +36 1 2 45 45 45 or you can reach us directly [through our portal](#).

Sincerely,

Ádám Mészáros
Country Manager
DHL Express Hungary



SUSTAINABILITY

[Connecting Your World](#)
[► Sustainability](#)
[Service Offering](#)
[How to Ship with DHL Express](#)
[Digitalization](#)
[Zones and Rates](#)

Everything we do is to serve one purpose: **Connecting people, improving lives.** To fulfill this purpose, we need to make every dimension of our business sustainable. Our Sustainability Roadmap sets out our ambitions in three focus areas: Environment, Social and Governance (ESG). Find case studies and more details [here](#).

OUR TARGETS FOR 2030

<29 million

Reduction in our greenhouse gas emissions to under 29 million tonnes

€7 billion

Investment of €7 billion in green technologies

SBTi

Commitment to SBTi (Science-Based Targets initiatives)

30%

SAF blending of 30% for all air transport

CLEAN OPERATIONS FOR CLIMATE PROTECTION

Leader in sustainable aviation



Our GoGreen Plus service allows you to embrace green logistics by insetting, or reducing, the CO2 within your own supply chain. We do this by using Sustainable Aviation Fuel (SAF). And that is not only good for the environment, it can benefit you by helping you to report your CO2 emissions. Here is how to get on board:



- With the GoGreen Plus **basic contract**, 30% CO2 reduction (insetting) is applied to all your express shipments via air.
- In **MyDHL+**, you can opt for GoGreen Plus and choose which shipments to invest in with SAF.
- Alternatively, choose a **customized offer** for even more CO2 reduction.

Our GoGreen Plus service is made possible following DHL's landmark collaborations with bp and Neste to supply DHL Express with SAF, which is expected to save some **two million tons** of carbon dioxide emissions over the aviation fuel cycle.



Green last-mile and line-haul

Electrify **60%** of last-mile delivery vehicles and increase share of sustainable fuels in line haul to more than **30%** by 2030.



Carbon neutral buildings

Design **100%** of all new buildings to be carbon neutral.



Green product portfolio

Our GoGreen Plus service allows customers shipping TDI to inset their CO2 air emissions by up to **100%**.

Through collaboration, we can make our supply chains more sustainable. Read more about the Era of Sustainable Logistics.



GREAT COMPANY TO WORK FOR ALL

- Attract and retain the best talent
- Strong 'Safety First' culture
- Diverse and inclusive workplace

HIGHLY TRUSTED COMPANY

- Compliance as an integral part of daily business
- Effective governance set-up across our organization
- Like-minded and compliant suppliers and partners



SERVICE OFFERING

Connecting Your World
Sustainability
► Service Offering
How to Ship with DHL Express
Digitalization
Zones and Rates

Export Services	Import Services	Domestic Services	Enabling Your Growth	Optional Services	Surcharges	Customs Services
-----------------	-----------------	-------------------	----------------------	-------------------	------------	------------------

Our core services are Time Definite International (TDI) and offer you secure door-to-door delivery of goods and documents to and from virtually every country and territory. Whether you need your shipments delivered at the start, middle or end of a business day, our services offer full track-and-trace visibility so you always know where your shipments are.

EXPORT SERVICES

DHL Express Worldwide

Our most popular product, DHL Express Worldwide, offers an end of business day delivery service around the world for pieces up to 70kg and shipments up to 3.000kg.

We deliver reliably and quickly to more global destinations across a single integrated network than any other express delivery company.

DHL Express 12:00

With DHL Express 12:00 you will receive your shipments before 12 noon on the next possible business day. DHL Express 12:00 offers a money-back guarantee* and allows for pieces up to 70kg and shipments up to 300kg.

DHL Express 9:00 (10:30 to the USA)

Our premium time-definite service offers a delivery before 9:00 (10:30 to the USA) on lanes that guarantee either a next or second business day delivery. DHL Express 9:00 is offered to the majority of business centers in Europe, the Middle East, Africa, Asia and the Americas. DHL Express 9:00 features a money-back guarantee* and is suitable for pieces up to 30kg and shipments up to 300kg.

DHL Economy Select

DHL Economy Select is the ideal choice for less urgent shipments, with door-to-door delivery throughout Europe within a defined number of business days.

Our international services at a glance

	DHL Express Worldwide	DHL Express 12:00	DHL Express 9:00 (10:30 to the USA)	DHL Economy Select
Service description	Delivery by the end of the next possible business day	Delivery before 12 noon on the next possible business day	Delivery before 9:00 (10:30 to the USA) on the next possible business day	Delivery within a defined number of business days
Money-back guarantee	No	Yes*	Yes*	No
Countries and territories covered	More than 220	176	143	28
Delivery attempts	2	2	2	2
Maximum piece weight (not on pallet)	70kg	70kg	30kg	70kg
Maximum pieces per shipment	–	10	10	–
Maximum piece dimensions (L x W x H)**	120 x 80 x 80cm	120 x 80 x 80cm	120 x 80 x 80cm	120 x 80 x 80cm
Maximum pallet weight	1.000kg	Pallets not accepted	Pallets not accepted	1.000kg
Maximum shipment weight	3.000kg	300kg	300kg	1.000kg
Maximum pallet dimensions (L x W x H)	300 x 200 x 160cm	Pallets not accepted	Pallets not accepted	300 x 200 x 180cm

*Additional terms and conditions apply – see [mydhl.express.dhl](#) for details.
**A shipment is deemed unacceptable if its packaging is absent or inadequate, or if transporting the shipment would present risks of damaging equipment, other packages or injuring personnel. DHL reserves the right to either not accept or return the shipment to the shipper. These network restrictions are subject to change with 30 days' notice.

SERVICE OFFERING

[Connecting Your World](#)
[Sustainability](#)
[▶ Service Offering](#)
[How to Ship with DHL Express](#)
[Digitalization](#)
[Zones and Rates](#)
[Export Services](#)
[Import Services](#)
[Domestic Services](#)
[Enabling Your Growth](#)
[Optional Services](#)
[Surcharges](#)
[Customs Services](#)

IMPORT SERVICES

With the DHL Express Worldwide Import product, you can import shipments from over 220 countries and territories in the world. This is more than any other express delivery company can offer. What's more, customers in, say, the USA can order an import from China not just to the USA, but to any other destinations as well – we call this a Third Country shipment.

There is no need for local brokers or forwarders to get involved in any part of the process. You are in full control, and able to manage all aspects of your imports in a very simple way.

If you need a faster delivery, our DHL Express 12:00 services are available for import as well as our DHL Economy Select Import service for less urgent shipments throughout Europe. You can order an import from another country, to be delivered to your country or any other destination, by using our dedicated electronic shipping solution for imports. You will have one account number, one invoice in a single currency and a fixed price that means you know exactly what you will pay.

DOMESTIC SERVICES

If you want to ship documents or goods within your own country, we can offer our Time Definite Domestic products with delivery time guarantees of 12:00, 10:30 or the end of the next possible business day.

DHL EXPRESS ENVELOPE

Our DHL Express Envelope service provides door-to-door international delivery of lightweight document shipments by the end of the next possible business day. It also offers you carbon neutral shipping at no extra charge.

- Up to 300g
- Global coverage
- Document shipments only
- Packaging envelope included
- GoGreen Plus carbon-reduced service



DHL SAME DAY & SPECIAL SERVICES

With DHL Same Day & Special Services, we offer customized solutions for high value or critical international shipments to over 220 countries and territories. We pick up a shipment of almost any size or weight and deliver it to its destination within hours.



SERVICE OFFERING

Connecting Your World

Sustainability

► Service Offering

How to Ship with DHL Express

Digitalization

Zones and Rates

Export
ServicesImport
ServicesDomestic
ServicesEnabling Your
GrowthOptional
Services

Surcharges

Customs
Services

GLOBAL TRADE AND YOU

A series of crises has put international trade at the center of the debate about economic growth and resilience. What are the current prospects for globalization and trade? Is there cause for concern? Is trade still an attractive source of growth? We deep dived into the data and conducted a thorough, fact-based analysis – and the results might just surprise you. In partnership with NYU Stern's Center for the Future of Management and its DHL Initiative on Globalization, the 'DHL Trade Growth Atlas' examines global trade growth trends and the trade patterns of 173 countries worldwide that combined make up more than 99% of world trade, GDP and population. Despite recent shocks and worsening macroeconomic conditions in much of the world, the study overall gives an upbeat assessment of the prospects for future trade growth.

We know the value of understanding the long-term global trade landscape for navigating short-term shifts in economic and trade growth. We help our customers make sense of what this means for their business to maximize the enormous potential of globalization and international trade.

Trade growth expanding across a broader range of countries

New poles emerging: world trade center of gravity moving south

Shift in mix of products traded by advanced vs. emerging economies



POWERING UP THE POTENTIAL OF INTERNATIONAL E-COMMERCE

Discover and grow

Visit dhl.com/discover to learn more about how DHL helps e-commerce companies ranging from start-ups to large enterprises, advising them on how to grow internationally. Our e-commerce focussed country guides, white papers such as 'The Ultimate B2B E-Commerce Guide', customer and trend research and market intelligence tools can enable you to better understand your customers and their shipping requirements to take the next step in your e-commerce journey.

International e-commerce

We help our customers go global with ease and speed to maximize the enormous potential of international e-commerce. DHL supports our customers' international growth with:

- Global reach
- Express delivery options
- Flexible delivery options for receivers (see 'On Demand Delivery')
- Duty billing options and customs expertise
- Consultative advice for our customers on how to increase sales and grow cross-border

Fast, flexible and easy

Consumers expect everything 'on demand' – anytime, anywhere. DHL shipping options give customers a distinct competitive edge: over 90% of online consumers look at the available delivery options before going to the checkout, and their decision is influenced by delivery speed, flexibility and ease.



SERVICE OFFERING

Connecting Your World
Sustainability
► Service Offering
How to Ship with DHL Express
Digitalization
Zones and Rates

Export Services	Import Services	Domestic Services	Enabling Your Growth	Optional Services	Surcharges	Customs Services
-----------------	-----------------	-------------------	----------------------	-------------------	------------	------------------

OPTIONAL SERVICES

[View charges](#)

DHL Express offers a wide range of optional services – from non-standard deliveries and billing options to climate neutral shipping.

GoGreen Plus

When selected, DHL will reduce (inset) CO2 emissions from air transport through the purchase of Sustainable Aviation Fuel (SAF). SAF can reduce lifecycle carbon emissions by up to 80% compared to traditional jet fuel. GoGreen Plus – Carbon Reduced service, supports Scope 3 emission reductions in alignment with the Science Based Target initiative. The process is audited annually by SGS (Société Générale de Surveillance) to ensure compliance with regulations and standards. Alternative reduction levels and CO2 emission reports are available on contractual basis only.

Dedicated Pickup

If your business needs a dedicated vehicle to collect unusual shipments, or a pickup outside normal business hours, we can arrange this for you.

Dedicated Delivery

On customer request, an immediate or non-routine, once-only delivery of a shipment within a normal working day or a holiday that involves a specific vehicle such as tail lift truck or more than one courier.

Saturday Pickup

In countries where Saturday is not a normal working day, DHL can arrange an ad-hoc pickup of smaller shipments up to 30kg. The service is available at selected postal locations only.

Saturday Delivery

We offer Saturday delivery services to key cities in more than 70 countries.

Shipment Insurance

We recommend this comprehensive protection for your valuable or personal shipments, giving you peace of mind in the unlikely event of physical damage or loss. The service is subject to specific limitations and exclusions as described in our [Terms and Conditions](#).

Extended Liability

If you are sending valuable documents such as passports, visa applications or regulatory certificates you can extend coverage and compensation beyond the DHL standard liability described in our [Terms and Conditions](#). In the event of full or partial loss to a document shipment, a fixed compensation will be paid regardless of the replacement cost of the document.

Packaging Supplies

Charges apply for all DHL standard packaging items including plastic flyers provided in bulks or stacks.

Hold for Collection

On shipper request, a shipment is held at the default DHL delivery facility at destination for consignee collection, rather than attempt a delivery at the receiver’s address. The service is booked through Customer Service or supporting shipping tools. The destination will notify the receiver when and at which facility the shipment is ready to collect. A consignee cell phone number is mandatory.

DUTY BILLING SERVICES

Duty Tax Paid

DHL can arrange for the shipper or a third party to be billed for any duties and taxes payable at destination, rather than the receiver of the shipment being billed. Charges apply whenever duties, taxes or other regulatory fees occur, and shipper has requested that those are to be billed outside of the destination country.

Duty Tax Processing: Account Customers

DHL will accelerate the customs clearance process making prompt payment of duty and tax charges relating to a shipment, while the receiver defers payment until an agreed date.

Duty Tax Processing: Non-Account Customers

This default service covers any import of a non-document shipment for which DHL has used its own credit line with Customs to advance or guarantee the payment of duties, taxes or regulatory charges on behalf of importers and consumers with whom DHL has no contract.

SERVICE OFFERING

Connecting Your World
Sustainability
► Service Offering
How to Ship with DHL Express
Digitalization
Zones and Rates

Export Services	Import Services	Domestic Services	Enabling Your Growth	Optional Services	Surcharges	Customs Services
-----------------	-----------------	-------------------	----------------------	-------------------	------------	------------------

OPTIONAL SERVICES [View charges](#)

Residential Address
Customers shipping to a home or private residence can activate specific delivery options by designating the delivery address as residential. For such shipments, DHL will proactively notify the receiver via email or SMS about the shipment’s progress. Receivers can then select the most suitable delivery option via On Demand Delivery.

Direct Signature
If you are sending sensitive documents or high value contents you can request DHL to obtain a direct signature from the consignee or a representative at the delivery address. DHL will ensure your shipment is not re-directed, or delivered at an alternative address.

Adult Signature
Delivery of a shipment to an adult. DHL will obtain a delivery signature from an adult at the stipulated delivery address.

Printed Invoice
This service is for customers who require a paper invoice where e-billing is the agreed standard. This service provides flexibility for a different invoicing method than what is already agreed.

Change of Billing
This applies when a customer requests a change of defined billing information on an already issued invoice, which will result in a reissuing of the invoice and, in case of an account change, crediting of the old account and debiting of the new.

Neutral Delivery
This service allows for the delivery of any shipment, without its value being shared or exposed to the receiver. DHL will ensure any paperwork exposing the value of the goods is removed from the shipment prior to delivery.



SERVICE OFFERING

Connecting Your World
Sustainability
► Service Offering
How to Ship with DHL Express
Digitalization
Zones and Rates

Export
Services

Import
Services

Domestic
Services

Enabling Your
Growth

Optional
Services

Surcharges

Customs
Services

SURCHARGES

[View charges](#)

In order to maintain a consistently high level of service, in specific circumstances DHL Express levies a surcharge for exceptional activities, ensuring that these surcharges are fair for all of our customers.

Fuel Surcharge

The fuel surcharge for Domestic and International Time Definite services will be based on the daily average spot prices for US Gulf Coast (USGC) kerosene-type jet fuel, as reported by the U.S. Department of Energy between 3rd week release of prior month to 3rd week release of actual month. For example, the daily average price for fuel from 18th April to 15th May is used to determine the applicable surcharge in June.

The fuel surcharge for Day Definite services will be based on the most suitable national measure of diesel fuel prices. The surcharge is linked to the consumer price in local currency of diesel fuel inclusive of duties and taxes and published [here](#). Within Europe this is measured by the European Commission Directorate General for Energy and Transport and published in the Oil Bulletin. The fuel surcharge applies to transportation charges on all services and to the following surcharges (where applicable): Saturday Delivery, Saturday Pickup, Elevated Risk, Demand Surcharge, Emergency Situation, Remote Area Delivery, Remote Area Pickup, Dedicated Pickup, Dedicated Delivery, Residential Address, Overweight Piece, Oversize Piece and Non-Stackable Pallet.

DHL reserves the right to change the fuel surcharge index and table with or without notice. Both the amount and duration of the surcharge will be determined at DHL's sole discretion.

Remote Area

This surcharge applies when a shipment is collected from or delivered to a location that is distant or difficult to serve.

Overweight Piece

A fixed surcharge is applied to every piece, including a pallet that exceeds a scale or volumetric weight of 70kg.

Oversize Piece

This fixed surcharge applies to every piece, including a pallet, with a single dimension in excess of 120cm. Does not apply to pieces already subject to Overweight Piece surcharge.

Non-Stackable Pallet

This fixed surcharge is applied to every pallet within a shipment that cannot be stacked, either on request by the shipper, or because of its shape, content or packaging. This surcharge does not apply to pieces below 30kg.

Demand Surcharge

One or more Demand Surcharges will apply to shipments during a period of high demand. A period of high demand is to be determined by DHL at its own discretion but may include a time of high demand for shipping services or a period with high operational cost. Details regarding the application of Demand Surcharges are set forth at [mydhl.express.dhl](#) and will be subject to change upon prior notice. Demand Surcharges apply cumulatively if a shipment and/or individual pieces meet more than one of the specified criteria. Demand Surcharges apply in addition to the rates and any other applicable charges.

Emergency Situation

A temporary surcharge, which allows us to cover operating cost increases due to an emergency situation out of DHL's control. Change in market dynamics and air capacity availability is reflected through regular price adjustments. The charge will be applied pro rata based on the chargeable weight (invoiced weight) of a shipment.

Excepted Quantities

This fixed surcharge is applied when the handling and transportation of shipments involves substances and commodities that are in Excepted Quantities in compliance with IATA Dangerous Goods Regulations. Contractual agreement required.

Dry Ice

A surcharge is applied when the transportation of shipments involves handling Dry Ice UN1845 as a freezing agent for non-dangerous goods such as diagnostic specimens. Contractual agreement required.

Biological Substance UN3373

Shipments containing Biological Substances Category B (UN3373) or genetically modified organisms as per UN3245 are only accepted in combination with DHL Medical Express. Contractual agreement required.

SERVICE OFFERING

Connecting Your World
Sustainability
▶ Service Offering
How to Ship with DHL Express
Digitalization
Zones and Rates

Export
Services

Import
Services

Domestic
Services

Enabling Your
Growth

Optional
Services

Surcharges

Customs
Services

➔ SURCHARGES

[View charges](#)

Lithium Batteries Section II

Shipping Lithium Batteries *with* equipment

A service charge will be assessed on Lithium-Ion and Lithium-Metal batteries **with** equipment. Packaging must be compliant with the appropriate IATA Packing Instruction (PI): 966 for Lithium-Ion and 969 for Lithium-Metal, Section II respectively. Accepted from approved shippers only.

Shipping Lithium Batteries *in* equipment

Shipments containing Lithium-Ion or Lithium-Metal batteries **in** equipment are accepted only in compliance with the appropriate IATA Packing Instruction (PI): 967 for Lithium-Ion and 970 for Lithium-Metal, Section II respectively.

DHL **will not accept** any shipment that is known or suspected to contain defective or damaged batteries.

Full Dangerous Goods

A surcharge is applied per shipment when the transportation of shipments involves handling substances and commodities classified as fully regulated in accordance with the IATA Dangerous Goods Regulations. Contractual agreement required.

Consumer Goods ID8000

A surcharge is applied for shipments containing consumer goods such as perfumes, aftershaves, aerosols, nail varnish and prescription medicines as covered by the IATA ID8000 section and packed in a form intended for retail sale and shipped to private individuals (B2C). Contractual agreement required.

ADR Load Exemptions

A charge applies when the total quantity of dangerous goods carried in packages by a road-based 'transport unit' e.g. a van, lorry, or trailer exceed the limits set by ADR and defined for transport under Limited Quantity regulations.

Limited Quantities

A surcharge is applied per shipment when the ground handling and transportation of shipments involves substances and commodities that are in Limited Quantities. In compliance with ADR regulations and which are restricted from air transportation. Such dangerous goods are restricted to no more than 30kg per piece and are accepted from approved Shippers only. Contractual agreement required.

Address Correction

A fixed surcharge is applied per shipment when the destination address provided by the Shipper is incomplete, outdated or incorrect and DHL is subsequently unable to deliver the shipment. DHL searches and determines the correct address to complete the delivery.

Data Entry

A surcharge applies if the shipping label is not correctly completed or has not been produced electronically according to DHL standards and therefore requires manual data entry by DHL.

Security Charges

Additional surcharges may apply when shipping to or importing from a destination country where DHL is operating at elevated risk due to continuous state of war, civil unrest, or continuous threats from terrorism (**Elevated Risk**), or when shipping to or importing from a destination country that is subject to trade restrictions imposed by the UN Security Council or by national legislation such as the European Union or the US Office of Foreign Assets Control (OFAC) (**Restricted Destination**).



SERVICE OFFERING

Connecting Your World
Sustainability
► Service Offering
How to Ship with DHL Express
Digitalization
Zones and Rates

Export Services	Import Services	Domestic Services	Enabling Your Growth	Optional Services	Surcharges	Customs Services
-----------------	-----------------	-------------------	----------------------	-------------------	------------	------------------

CUSTOMS SERVICES

[View charges](#)

Navigating the customs landscape is made easier by DHL's extensive knowledge and experience of both standard and non-routine customs-clearance processes. Get answers to many of your questions with our new online tool, [My Global Trade Services](#) tool, which will help you expand across borders – and concentrate on your core business.

Non-Routine Entry

Applies when shipments are subject to non-routine clearance procedures, due to their value, weight and/or commodity as defined by destination Customs Authorities. May also apply in selected countries where DHL is legally obliged to outsource formal clearance entries to a licensed third party broker.



Clearance Processing

Applies in selected countries where additional cost is incurred for importing shipments in alignment with government agency requirements.

Permits and Licenses

To accelerate import of selected controlled commodities, such as medical devices, pharmaceuticals, computer monitors, laser CD players, cosmetics, eyeglasses, food and food products, DHL is required to file specific information in order to obtain the required import permits or licenses.

Bonded Storage

Storage charges apply when the shipment cannot be released by Customs due to inaccurate or missing paperwork. Charges take effect three calendar days after the freight arrival date or broker notification, whichever is later. The charge applies to the duty and taxes payer.

Multiline Entry

Charges apply when more than 5 lines are recorded on the customs clearance, for example with different commodities or different countries of manufacture.

Release to Broker

On importer request, DHL will transfer the shipment and related customs documentation to the customer's nominated broker for clearance and last mile delivery.

Broker Notification

On importer request, DHL will provide the necessary paperwork to the customer's designated broker to perform the import clearance and resume the delivery to the final destination once the clearance is completed. DHL is subsequently not responsible for the timeliness of the submission to customs or for the release of the shipment.

Other Government Agency

At request, DHL will arrange the completion of Veterinary, Health or Phytosanitary controls at the First Point of Entry in a country or a Customs Union, typically required when importing animal products, plants, seeds, or pharmaceutical products.

Bonded Transit

Bonded Transit applies to both export and import shipments whenever DHL is required to open, manage or report any form of transfer under bond.

Export Declaration

Applies in countries where an export declaration is required for shipments containing controlled commodities or exceeding a certain value threshold or weight. Where automated export systems are available to the public, shippers may avoid the charge by submitting the export declaration online. In case of IMP billed shipments DHL will submit the export declaration in order to accelerate the export at origin and pass the charge to the payer's account.

HOW TO SHIP WITH DHL EXPRESS

Connecting Your World

Sustainability

Service Offering

► **How to Ship with DHL Express**

Digitalization

Zones and Rates

Preparing Your Shipment

Packaging Your Shipment

Paying for Your Shipment

PREPARING YOUR SHIPMENT: AS EASY AS 1-2-3

1 Shipment weight

- Please weigh and measure your shipment.
- If you are sending a large but lightweight shipment, where its volumetric (dimensional) weight exceeds its actual weight, the cost of the shipment is calculated on the space your consignment takes up on the aircraft. This is a standard IATA method. To calculate the volumetric weight of your shipment, simply multiply the length by height by width in centimeters, then divide the total sum by 5.000 for each piece in the shipment.
- Any piece in the shipment may be re-weighed and/or re-measured by DHL to confirm this calculation.

2 Documentation required: waybill

- All shipments sent with DHL Express need to have a fully completed DHL waybill or label securely attached to each piece. This will enable the successful movement of your shipment through the DHL network. Each waybill or label is individually numbered to allow you to track your shipment from collection through to delivery.
- Your shipment may also need to be accompanied by customs documentation, such as a commercial or proforma invoice, as well as additional paperwork depending on the contents and value of the shipment and the country you are sending to.

3 Documentation required: invoice

- A commercial or proforma invoice is required when sending non-document shipments to countries and territories outside your origin country or customs union. This is essentially a declaration containing all the details of a transaction and is used by customs authorities to assess if duties or taxes are payable.
- A commercial invoice is used when goods are part of a commercial transaction or intended for resale.
- A proforma invoice is used when sending goods of no commercial value (for example, when sending samples).



HOW TO SHIP WITH DHL EXPRESS

Connecting Your World
Sustainability
Service Offering
► How to Ship with DHL Express
Digitalization
Zones and Rates

- Preparing Your Shipment
- Packaging Your Shipment
- Paying for Your Shipment

PREPARING YOUR SHIPMENT INVOICE

This invoice template covers the key data elements required for a successful customs clearance. To help us ensure the service we provide is efficient and high-quality, visit mydhl.express.dhl for more guidance.

COMMERCIAL INVOICE

SENDER

Company Name:
Contact Name:
Building Name:
Street Name & Number:
Postcode:
City/Country:
Business/Private:
Phone:
Email:
Tax ID/VAT Number:
EORI Number:

GENERAL INFORMATION

Date:
Waybill Number:
Invoice Number:
Shipment Reference Number:
Receiver Reference Number:

RECEIVER

Company Name:
Contact Name:
Building Name:
Street Name & Number:
Postcode:
City/Country:
Business/Private:
Phone:
Email:
Tax ID/VAT Number:
EORI Number:

BILLED TO/IMPORTER OF RECORD (IOR) (if different from Receiver)

Company Name:
Contact Name:
Building Name:
Street Name & Number:
Postcode:
City/Country:
Business/Private:
Phone:
Email:
Tax ID/VAT Number:
EORI Number:

OTHER REMARKS

Please add any additional critical information or specific country clearance requirements that might be relevant e.g. bank details, special formalities etc.

Line Number	Full Description of Goods	Commodity Code <small>(Full Import HS Code Preferred)</small>	Country of Origin	Qty	Unit Value & Currency	Sub-Total Value & Currency	Net Weight	Gross Weight
1								
2								
3								
						Total Goods Value & Currency	Total Net Weight	Total Gross Weight

Number of Invoice Line Items:

Total Units:

Number of Pieces:

Reason for Export:

Type of Export:

INCOTERM:

INCOTERM Place:

Carrier:

Ultimate Consignee:

Export License Number:

Import License Number:

Insurance Cost:

Freight Cost:

Other Costs:

VALUE (for Customs Purposes):

Import Customs Duties – *pre calculated*

Import Taxes (VAT/GST) – *pre calculated*

TOTAL (with Import Customs Duties/Taxes):

Terms of Payment:

Payer of GST/VAT:

Duty/Tax Billing Svc:

I/we certify the information on this invoice is true and correct and that the contents of this shipment are as stated above.

Name: _____ Title: _____ Email: _____

Date: _____ Signature: _____



HOW TO SHIP WITH DHL EXPRESS

Connecting Your World
Sustainability
Service Offering
► How to Ship with DHL Express
Digitalization
Zones and Rates

Preparing Your Shipment

Packaging Your Shipment

Paying for Your Shipment

PACKAGING YOUR SHIPMENT

To ensure that your shipments travel safely and securely through the DHL Express global network, it is important that they are packaged and labeled correctly.

Packaging guidelines

- If you are re-using envelopes or boxes, please ensure that old labels and markings are removed
- Securely fix a waybill to each piece in your shipment. The waybill can be thought of as the shipment’s airline ticket and it will delay delivery if it becomes separated from your shipment
- The barcodes on the waybill are scanned at numerous points during your shipment’s journey. Please ensure the barcode is flat and not covered by tape, shrinkwrap or strapping
- Place a waybill on the top or side of each piece in your shipment and please ensure it does not overlap the corners or edges of boxes
- Use adequate protective wrapping for fragile or delicate items and ensure they are packed as far away as possible from the corners of boxes
- To prevent injury to our employees, please pay special attention to the packaging of sharp items. There should not be any possibility of the contents piercing the packaging
- Any individual pieces over 70kg should be placed on a pallet. If you are sending a multi-piece shipment, it is not necessary to place the individual pieces on a pallet unless they exceed 70kg. For example, a shipment comprising four 25kg pieces does not have to be placed on a pallet

DHL packaging

We offer a range of high-quality DHL-branded packaging items, suitable for shipping items of all shapes and sizes. The items available include:

- Flyer bags
- Cardboard document envelopes
- Boxes in a range of sizes
- Tubes
- Bottle boxes

For more information please refer to the Packing Guide available on mydhl.express.dhl.

Prohibited and Restricted Commodities

Prohibited Items

The following items will NOT be accepted for carriage by DHL. This list includes items which are prohibited for carriage by any law, regulation or statute of any federal, state or local government of any country from, to or through which the items may be carried. For international carriage there may be additional prohibited items specified by the country of destination. DHL may at its sole discretion refuse to carry other items not listed below.

- Bullion (of any precious metal)
- Cannabis
- Cash (legal tender – bank notes, currency notes and coins)
- Complete firearms, ammunition, explosives/explosive devices including inert explosives and test pieces, air guns, replica and imitation firearms
- Human remains or ashes in any form
- Hunting (animal) trophies, animal parts such as ivory and shark’s fin, animal remains or ashes, or animal by-products and derived products not intended for human consumption, prohibited for movement by the Convention on International Trade in Endangered Species of Wild Fauna and Flora (CITES) and/or local law
- Illegal goods, such as counterfeit goods and narcotics
- Live animals (including but not limited to mammals, reptiles, fish, invertebrates, amphibians, birds, insects, larvae and pupae)
- Loose lithium metal batteries under IATA PI968 section II
- Loose precious and semi-precious stones (cut or un-cut, polished or un-polished)



HOW TO SHIP WITH DHL EXPRESS

Connecting Your World
Sustainability
Service Offering
► How to Ship with DHL Express
Digitalization
Zones and Rates

Preparing Your Shipment

Restricted Items

The following items will NOT be accepted for carriage unless otherwise agreed to by DHL. To obtain such agreement a business case will need to be conducted by DHL and the items approved for carriage will be recorded in writing with the customer.

- Air guns, tasers, imitation or replica firearms, firearm parts and replica ammunition (includes rifle butts, trigger mechanisms, screws/bolts etc which are manufactured for the sole purpose of creating a functional firearm)
- Antiques and works of art with a shipment value in excess of €500.000
- Banderols/Tax stickers with a shipment value in excess of €500.000
- Cigarettes, cigars, tobacco products and electronic cigarettes with a shipment value in excess of €500.000
- Commemorative coins and medals with an individual value or total shipment value of €2.000 or more are restricted for carriage
- Dangerous/hazardous goods including but not limited to perfumes, aftershaves, aerosols, flammable substances, dry ice, biological substances, UN classified dangerous goods and any goods specified as such under International Air Transport Association regulations ("IATA"), the

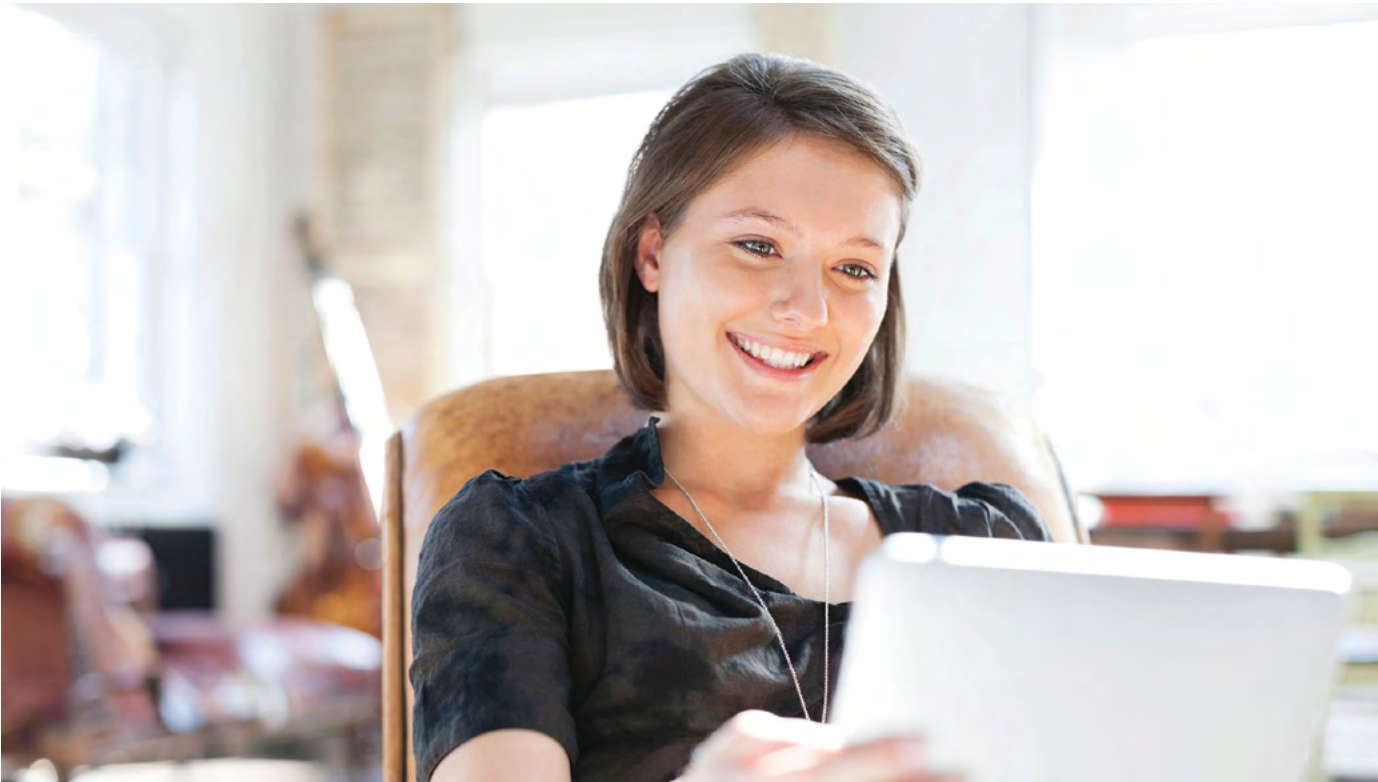
Packaging Your Shipment

Agreement on Dangerous Goods by Road ("ADR") or International Maritime Dangerous Goods ("IMDG") regulations

- Financial and monetary commodities – examples include but are not limited to activated SIM cards for mobile phones, blank or activated credit or cash dispenser cards, blank checks, event tickets, lottery tickets, money or postal orders, pre-paid phone cards, tickets (blank stock), traveler's checks, vouchers/tokens, unused stamps etc. Applicable to all shipments valued in excess of €500.000
- Furs
- Jewelry and watches and with individual values in excess of €5.000. The shipment must not exceed €100.000

PAYING FOR YOUR SHIPMENT

You can pay for DHL Express services either with cash, a credit card or by bank transfer. You can open an account with DHL Express to pay via bank transfer; and all account customers receive invoices on a pre-agreed basis. For more details, please get in touch with a Customer Service Advisor at your local DHL Express office or go to mydhl.express.dhl.



DIGITALIZATION

Connecting your World
Sustainability
Service Offering
How to Ship with DHL Express
► Digitalization
Zones and Rates

Digitalization is one of the most important trends impacting logistics, and it is one of the key pillars of DHL Group's Strategy 2025. Through digitalization we bring benefits for our customers, our operations and our own people.

We invest continually in market-leading technologies to help our customers to manage and monitor shipments, create shipping labels, get quotes, schedule courier pickups, connect with us and more. Digitalizing our operations provides more transparency, allowing us to better anticipate and meet our customers' needs.

MYDHL+

MyDHL+ re-imagines the way the shipping business does business, by combining the tools and services our customers use most. With its mobile friendly and intuitive interface, customers can now import, export, schedule a pickup, track shipments and pay bills more quickly than ever – all in one visit, with one password and zero headaches. MyDHL+ makes it incredibly easy to navigate the complexities of international shipping.

mydhl.express.dhl

MyDHL+

MY GLOBAL TRADE SERVICES

My Global Trade Services (MyGTS) is your trusted advisor for cross-border trade – taking the complexity out of customs. If you are wondering what the harmonized shipping (HS) codes are for your goods, what the estimated total cost of your shipment will be, what can help get your goods cleared, and what documentation may be required, find the answers to these questions and more on our online MyGTS portal.

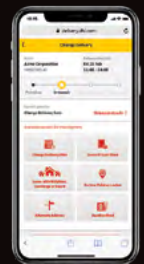
And the benefits for you? You can support clearing customs more quickly and more accurately, help avoid delays and unexpected customs or tax costs, and pre-plan your shipment journeys so that you understand potential prohibitions and restrictions.

dhl.com/express/mygts

MyGTS

ON DEMAND DELIVERY

DHL's On Demand Delivery tool keeps receivers informed of shipment progress, allowing them to reschedule, reroute, release or conveniently collect from a DHL Service Point. It is an innovative, easy-to-use, mobile-friendly service, especially for residential deliveries.



ondemand.dhl.com

Designed to enhance the online shopper's experience, the service is available globally, meaning consistent service standards and a harmonized user experience.



Scheduled delivery



Signature release/leave your signature



Alternative address



Collect from Service Point



Vacation hold



Leave with neighbor

DHL EXPRESS COMMERCE

Take your website international with DHL Express Commerce. Offer your customers all the benefits of DHL Express at your checkout in real-time. Import, manage and ship their orders quickly and efficiently with no complicated development. Add the power of DHL Express to your e-commerce business quickly and easily, giving you the competitive edge. DHL Express Commerce integrates with the biggest e-commerce platforms, including: Magento, Shopify, WooCommerce, Amazon and eBay.



DIGITALIZATION

[Connecting your World](#)
[Sustainability](#)
[Service Offering](#)
[How to Ship with DHL Express](#)
[► Digitalization](#)
[Zones and Rates](#)

DHL EXPRESS MOBILE APP



The DHL Express Mobile app lets you track your shipments and manage your deliveries all in one place. You can locate the nearest DHL Service Point for parcel drop off or collection, and quickly check shipping rates too – right on your smartphone. Advanced GPS location services and camera barcode scanning are also available. Download DHL Express Mobile today, on Android or iOS.



DIGITAL ASSISTANT

Our Digital Assistant is a live chat helpdesk that offers a 24/7 service across multiple online channels and platforms, and in 41 languages, including Hungarian. It tracks your shipments, answers queries and directs you to FAQs.


[Chat with us now!](#)


ROBOTICS

Driven by rapid technological advancements and increasing supply chain complexity, robotics solutions are entering the logistics environment, boosting productivity and driving zero-defect processes.

Robots are adopting more roles at DHL Express, assisting workers with the most repetitive and labor-intensive tasks and freeing them up to do higher-order, customer-facing activities. Examples include the use of articulated robotic arms for sorting inbound packages to last-mile delivery routes. We have four such robots in use globally, with this number set to double soon.

Our robots help get couriers out on the road faster – which means your parcels get delivered faster.

DIGITAL TRUST

Logistics requires transferring data and content around the world and we embrace a responsibility to do this securely. Our standards led by our Binding Corporate Rules and by our [Data Privacy Policy](#) apply throughout the DHL Group and are approved by the Supervisory Authorities. We maintain a comprehensive [Information Security and Data Protection](#) approach based on ISO/IEC 27001:2013 and GDPR, to ensure a high standard when managing customer information assets and personal data. We aim to provide a rapid response to any security incident via our 24x7 Cyber Defence Centre (CDC) with global coverage and our global DPO community.

DHL Group acts as controller in respect of any personal data it receives from customers and holds to effectively provide transportation services and in regard to the delivery of any shipments or documents that it processes to perform its contractual obligations. DHL Group will act as a data controller when an individual is executing their rights under privacy legislations.

ZONES AND RATES

Connecting Your World
Sustainability
Service Offering
How to Ship with DHL Express
Digitalization
► Zones and Rates

Calculate the Price of Your Shipment	Optional Services	Surcharges	Customs Services	Service Capability and Rating Zones	Export Services	Import Services
--------------------------------------	-------------------	------------	------------------	-------------------------------------	-----------------	-----------------

CALCULATE THE PRICE OF YOUR SHIPMENT



Determine which zone your destination is in and whether yours is a document or non-document shipment.



Is your shipment international or domestic and how quickly do you want it to arrive?



Based on weight, zone and speed, confirm your base price for exports and imports.



Add any optional services and check if any surcharges apply.

Base price + Optional services + Surcharges = Total price

OPTIONAL SERVICES

[View explanation](#)

Optional services	Charging method	Charge
GoGreen Plus	Per shipment	Minimum 139 HUF per kg
Dedicated Pickup	Per shipment	167 HUF per kg with minimum of 11.160 HUF
Dedicated Delivery	Per shipment	192 HUF per kg with minimum of 15.880 HUF
Saturday Pickup	Per shipment	11.160 HUF
Saturday Delivery	Per shipment	14.880 HUF
Shipment Insurance	By shipment value	International: 4.092 HUF or 1% of shipment value if higher Domestic: 288 HUF or 0.5% of shipment value if higher
Extended Liability	Per shipment	International: 1.860 HUF Domestic: 680 HUF
Packaging Supplies		
Plastic Flyer Stack	Per stack	7.940 HUF per stack (100 flyers)
Bulk Packaging	Per stack	Variable
Duty Billing Services		
Duty Tax Paid	% of fiscal charges	2% of fiscal charges with minimum of 5.955 HUF
Duty Tax Processing: Account Customers	% of fiscal charges	2% of fiscal charges with minimum of 4.464 HUF
Duty Tax Processing: Non-Account Customers	% of fiscal charges	2% of fiscal charges with minimum of 4.464 HUF
Hold for Collection	No charge	No charge
Residential Address	Per shipment	1.860 HUF
Direct Signature	Per shipment	1.985 HUF
Adult Signature	Per shipment	1.985 HUF
No Signature Required	No charge	No charge
Printed Invoice	Per invoice	990 HUF
Change of Billing	Per invoice	4.464 HUF
Neutral Delivery	Per shipment	1.985 HUF

For a full list of optional services, please visit [mydhl.express.dhl](#).

ZONES AND RATES

Connecting Your World
Sustainability
Service Offering
How to Ship with DHL Express
Digitalization
► Zones and Rates

Calculate the Price of Your Shipment	Optional Services	Surcharges	Customs Services	Service Capability and Rating Zones	Export Services	Import Services
--------------------------------------	-------------------	------------	------------------	-------------------------------------	-----------------	-----------------

SURCHARGES

[View explanation](#)

Surcharges	Charging method	Charge
Fuel Surcharge	Per shipment	Percentage of transportation and additional charges, as per index; details here
Remote Area Delivery	Per shipment	180 HUF per kg 7.940 HUF minimum per shipment
Remote Area Pickup	Per shipment	180 HUF per kg 7.940 HUF minimum per shipment
Additional Handling		
Overweight Piece	Per piece	International: 35.730 HUF Domestic: 17.865 HUF
Oversize Piece	Per piece	International: 19.850 HUF Domestic: 9.925 HUF
Non-Stackable Pallet	Per piece	International: 102.300 HUF Domestic: 50.220 HUF
Demand Surcharge	Variable by lane and weight	Variable by lane and weight
Emergency Situation	Variable by lane and weight	Variable by lane and weight
Dangerous Goods		
Excepted Quantities	Per shipment	3.720 HUF
Dry Ice (UN1845)	Per shipment	4.464 HUF
Lithium Batteries with equipment		
Lithium Ion PI966, Section II	Per shipment	1.985 HUF
Lithium Metal PI969, Section II	Per shipment	1.985 HUF
Lithium Batteries in equipment	No charge	No charge
Full Dangerous Goods	Per shipment	37.200 HUF
Consumer Goods ID8000	Per shipment	9.300 HUF
ADR Load Exemptions	Per shipment	37.200 HUF
Limited Quantities	Per shipment	9.300 HUF
Address Correction	Per shipment	4.092 HUF
Data Entry	Per shipment	3.720 HUF
Security Charges		
Elevated Risk	Per shipment	11.160 HUF
Restricted Destination	Per shipment	11.910 HUF

For a full list of surcharges, please visit mydhl.express.dhl.

ZONES AND RATES

Connecting Your World
Sustainability
Service Offering
How to Ship with DHL Express
Digitalization
► Zones and Rates

Calculate the Price of Your Shipment	Optional Services	Surcharges	Customs Services	Service Capability and Rating Zones	Export Services	Import Services
--------------------------------------	-------------------	------------	------------------	-------------------------------------	-----------------	-----------------

CUSTOMS SERVICES

[View explanation](#)

Customs services	Charging method	Charge
Non-Routine Entry	Per shipment	16.740 HUF
Clearance Processing	Per shipment	3.970 HUF
Permits and Licenses	Per shipment	16.740 HUF plus cost of certificate
Bonded Storage	Per shipment, per day after three calendar days	4.092 HUF per shipment and 82 HUF per kg (both per day after three calendar days)
Multiline Entry	Rate per line, after five lines	1.985 HUF
Release to Broker	Per shipment	16.740 HUF
Broker Notification	Per shipment	4.464 HUF
Other Government Agency	Per shipment	16.740 HUF plus cost of certificate
Bonded Transit	Per shipment	9.120 HUF
Export Declaration	Per shipment	3.970 HUF for shipment values exceeding 1.000 EUR declared value

For a full list of customs services, please visit mydhl.express.dhl.



ZONES AND RATES

Connecting Your World
Sustainability
Service Offering
How to Ship with DHL Express
Digitalization
► Zones and Rates

Calculate the Price of Your Shipment	Optional Services	Surcharges	Customs Services	Service Capability and Rating Zones	Export Services	Import Services
--------------------------------------	-------------------	------------	------------------	-------------------------------------	-----------------	-----------------

SERVICE CAPABILITY AND RATING ZONES

Country/Territory	Zone	Time Definite Services				Day Definite Services	
		DHL Express Worldwide	DHL Express 12:00	DHL Express 9:00	Imports	DHL Economy Select	DHL Economy Select Import
Afghanistan	10	✓			✓		
Albania	6	✓	✓	✓	✓		
Algeria	10	✓	✓		✓		
American Samoa	10	✓	✓	✓	✓		
Andorra	6	✓	✓	✓	✓		
Angola	10	✓	✓	✓	✓		
Anguilla	9	✓	✓	✓	✓		
Antigua	9	✓	✓	✓	✓		
Argentina	9	✓	✓	✓	✓		
Armenia	10	✓	✓		✓		
Aruba	9	✓	✓	✓	✓		
Australia	8	✓	✓	✓	✓		
Austria	1	✓	✓	✓	✓	✓	✓
Azerbaijan	10	✓	✓		✓		
Bahamas	9	✓	✓	✓	✓		
Bahrain	8	✓	✓	✓	✓		
Bangladesh	8	✓	✓	✓	✓		
Barbados	9	✓	✓	✓	✓		
Belarus	10	✓	✓		✓		
Belgium	3	✓	✓	✓	✓	✓	✓
Belize	9	✓	✓	✓	✓		
Benin	10	✓	✓		✓		
Bermuda	9	✓	✓		✓		
Bhutan	8	✓			✓		
Bolivia	9	✓	✓	✓	✓		
Bonaire	9	✓	✓	✓	✓		
Bosnia and Herzegovina	6	✓	✓	✓	✓		
Botswana	10	✓	✓	✓	✓		
Brazil	9	✓	✓		✓		
Brunei	9	✓	✓	✓	✓		
Bulgaria	3	✓	✓	✓	✓	✓	✓
Burkina Faso	10	✓			✓		
Burundi	10	✓	✓	✓	✓		
Cambodia	9	✓	✓		✓		
Cameroon	10	✓	✓	✓	✓		
Canada	7	✓	✓	✓	✓		
Canary Islands, The	6	✓			✓		
Cape Verde	10	✓	✓	✓	✓		
Cayman Islands	9	✓			✓		
Central African Republic	10	✓			✓		
Chad	10	✓	✓	✓	✓		
Chile	9	✓	✓	✓	✓		
China, People's Republic	8	✓	✓	✓	✓		
Colombia	9	✓			✓		
Comoros	10	✓			✓		
Congo	10	✓	✓		✓		
Congo, Democratic Rep. of	10	✓			✓		
Cook Islands	10	✓	✓	✓	✓		
Costa Rica	9	✓	✓	✓	✓		
Cote d'Ivoire	10	✓	✓	✓	✓		
Croatia	2	✓			✓	✓	✓
Cuba	9	✓	✓	✓	✓		
Curacao	9	✓	✓	✓	✓		
Cyprus	4	✓	✓	✓	✓		
Czech Republic, The	2	✓	✓	✓	✓	✓	✓
Denmark	4	✓			✓	✓	✓
Djibouti	10	✓	✓	✓	✓		
Dominica	9	✓	✓	✓	✓		
Dominican Republic	9	✓	✓	✓	✓		

doc = document contents only ✓ = document and non-document contents Continues overleaf

For transit times and the availability of DHL Express 12:00 and DHL Express 9:00 for your origin and destination address, please refer to the DHL Capability Tool at dct.dhl.com. Pieces with a single base length up to 300cm are accepted. Additional surcharges may apply.

ZONES AND RATES

Connecting Your World
Sustainability
Service Offering
How to Ship with DHL Express
Digitalization
► Zones and Rates

Calculate the Price of Your Shipment	Optional Services	Surcharges	Customs Services	Service Capability and Rating Zones	Export Services	Import Services
--------------------------------------	-------------------	------------	------------------	-------------------------------------	-----------------	-----------------

➔ SERVICE CAPABILITY AND RATING ZONES

Country/Territory	Zone	Time Definite Services				Day Definite Services	
		DHL Express Worldwide	DHL Express 12:00	DHL Express 9:00	Imports	DHL Economy Select	DHL Economy Select Import
Ecuador	9	✓	✓	✓	✓		
Egypt	8	✓			✓		
El Salvador	9	✓	✓	✓	✓		
Eritrea	10	✓	✓	✓	✓		
Estonia	4	✓			✓	✓	✓
Eswatini	10	✓	✓		✓		
Ethiopia	10	✓			✓		
Falkland Islands	10	✓			✓		
Faroe Islands	9	✓			✓		
Fiji	10	✓	✓	✓	✓		
Finland	4	✓	✓	✓	✓	✓	✓
France	3	✓	✓	✓	✓	✓	✓
French Guiana	9	✓	✓		✓		
Gabon	10	✓			✓		
Gambia	10	✓	✓		✓		
Georgia	10	✓	✓	✓	✓		
Germany	2	✓	✓	✓	✓	✓	✓
Ghana	10	✓	✓	✓	✓		
Gibraltar	6	✓	✓	✓	✓		
Greece	4	✓			✓	✓	✓
Greenland	9	✓	✓	✓	✓		
Grenada	9	✓	✓	✓	✓		
Guadeloupe	9	✓	✓		✓		
Guam	10	✓	✓	✓	✓		
Guatemala	9	✓	✓	✓	✓		
Guernsey	6	✓	✓		✓		
Guinea Republic	10	✓			✓		
Guinea-Bissau	10	✓	✓	✓	✓		
Guinea-Equatorial	10	✓	✓	✓	✓		
Guyana (British)	9	✓			✓		
Haiti	9	✓	✓	✓	✓		
Honduras	9	✓	✓		✓		
Hong Kong SAR China	8	✓	✓	✓	✓		
Iceland	6	✓	✓	✓	✓		
India	8	✓	✓	✓	✓		
Indonesia	9	✓	✓	✓	✓		
Iran, Islamic Rep. of	10	✓	✓	✓	✓		
Iraq	8	✓	✓	✓	✓		
Ireland, Rep. of	3	✓			✓	✓	✓
Israel	6	✓			✓		
Italy	3	✓	✓	✓	✓	✓	✓
Jamaica	9	✓	✓	✓	✓		
Japan	8	✓	✓	✓	✓		
Jersey	6	✓	✓		✓		
Jordan	8	✓	✓	✓	✓		
Kazakhstan	10	✓	✓	✓	✓		
Kenya	10	✓	✓	✓	✓		
Kiribati	10	✓	✓	✓	✓		
Korea, D.P.R. of (North)	8	✓	✓	✓	✓		
Korea, Rep. of (South)	8	✓			✓		
Kosovo	6	✓	✓	✓	✓		
Kuwait	8	✓			✓		
Kyrgyzstan	10	✓			✓		
Lao P.D.R.	9	✓	✓	✓	✓		
Latvia	4	✓	✓	✓	✓	✓	✓
Lebanon	8	✓	✓	✓	✓		
Lesotho	10	✓	✓		✓		
Liberia	10	✓	✓	✓	✓		
Libya	10	✓	✓	✓	✓		

doc = document contents only ✓ = document and non-document contents

For transit times and the availability of DHL Express 12:00 and DHL Express 9:00 for your origin and destination address, please refer to the DHL Capability Tool at dct.dhl.com. Pieces with a single base length up to 300cm are accepted. Additional surcharges may apply.

Continues overleaf

ZONES AND RATES

Connecting Your World
Sustainability
Service Offering
How to Ship with DHL Express
Digitalization
► Zones and Rates

Calculate the Price of Your Shipment	Optional Services	Surcharges	Customs Services	Service Capability and Rating Zones	Export Services	Import Services
--------------------------------------	-------------------	------------	------------------	-------------------------------------	-----------------	-----------------

➔ SERVICE CAPABILITY AND RATING ZONES

Country/Territory	Zone	Time Definite Services				Day Definite Services	
		DHL Express Worldwide	DHL Express 12:00	DHL Express 9:00	Imports	DHL Economy Select	DHL Economy Select Import
Liechtenstein	6	✓	✓	✓	✓		
Lithuania	4	✓	✓	✓	✓	✓	✓
Luxembourg	3	✓			✓	✓	✓
Macau SAR China	8	✓			✓		
Madagascar	10	✓	✓	✓	✓		
Malawi	10	✓	✓	✓	✓		
Malaysia	8	✓	✓	✓	✓		
Maldives	9	✓	✓		✓		
Mali	10	✓			✓		
Malta	4	✓	✓	✓	✓		
Marshall Islands	10	✓			✓		
Martinique	9	✓	✓		✓		
Mauritania	10	✓	✓	✓	✓		
Mauritius	10	✓	✓		✓		
Mayotte	10	✓	✓	✓	✓		
Mexico	7	✓			✓		
Micronesia, Fed. States of	10	✓	✓	✓	✓		
Moldova, Rep. of	10	✓			✓		
Monaco	3	✓	✓	✓	✓		
Mongolia	10	✓			✓		
Montenegro, Rep. of	6	✓	✓	✓	✓		
Montserrat	9	✓	✓		✓		
Morocco	10	✓			✓		
Mozambique	10	✓	✓	✓	✓		
Myanmar	9	✓	✓		✓		
Namibia	10	✓	✓	✓	✓		
Nauru, Rep. of	10	✓	✓	✓	✓		
Nepal	9	✓	✓		✓		
Netherlands, The	3	✓			✓	✓	✓
Nevis	9	✓	✓		✓		
New Caledonia	10	✓	✓	✓	✓		
New Zealand	9	✓	✓	✓	✓		
Nicaragua	9	✓			✓		
Niger	10	✓	✓	✓	✓		
Nigeria	10	✓	✓	✓	✓		
Niue	10	✓			✓		
North Macedonia	6	✓	✓	✓	✓		
Northern Mariana Islands	10	✓	✓	✓	✓		
Norway	6	✓			✓	✓	✓
Oman	8	✓	✓	✓	✓		
Pakistan	10	✓			✓		
Palau	10	✓	✓	✓	✓		
Panama	9	✓	✓	✓	✓		
Papua New Guinea	9	✓	✓	✓	✓		
Paraguay	9	✓			✓		
Peru	9	✓	✓	✓	✓		
Philippines, The	9	✓			✓		
Poland	2	✓	✓	✓	✓	✓	✓
Portugal	4	✓	✓	✓	✓	✓	✓
Puerto Rico	9	✓	✓	✓	✓		
Qatar	8	✓	✓	✓	✓		
Reunion, Island of	10	✓	✓	✓	✓		
Romania	2	✓	✓	✓	✓	✓	✓
Russian Federation, The	10	✓	✓	✓	✓		
Rwanda	10	✓	✓		✓		
Samoa	10	✓			✓		
San Marino	6	✓			✓	✓	✓
Sao Tome & Principe	10	✓					

doc = document contents only ✓ = document and non-document contents

For transit times and the availability of DHL Express 12:00 and DHL Express 9:00 for your origin and destination address, please refer to the DHL Capability Tool at dct.dhl.com. Pieces with a single base length up to 300cm are accepted. Additional surcharges may apply.

Continues overleaf

ZONES AND RATES

Connecting Your World
Sustainability
Service Offering
How to Ship with DHL Express
Digitalization
► Zones and Rates

Calculate the Price of Your Shipment	Optional Services	Surcharges	Customs Services	Service Capability and Rating Zones	Export Services	Import Services
--------------------------------------	-------------------	------------	------------------	-------------------------------------	-----------------	-----------------

➔ SERVICE CAPABILITY AND RATING ZONES

Country/Territory	Zone	Time Definite Services				Day Definite Services	
		DHL Express Worldwide	DHL Express 12:00	DHL Express 9:00	Imports	DHL Economy Select	DHL Economy Select Import
Saudi Arabia	8	✓	✓	✓	✓		
Senegal	10	✓			✓		
Serbia, Rep. of	6	✓	✓	✓	✓	✓	✓
Seychelles	10	✓	✓	✓	✓		
Sierra Leone	10	✓	✓	✓	✓		
Singapore	8	✓			✓		
Slovakia	1	✓	✓		✓	✓	✓
Slovenia	2	✓	✓	✓	✓	✓	✓
Solomon Islands	10	✓	✓	✓	✓		
Somalia	10	✓	✓	✓	✓		
Somaliland, Rep. (N. Somalia)	10	✓			✓		
South Africa	8	✓			✓		
South Sudan	10	✓	✓	✓	✓		
Spain	4	✓			✓	✓	✓
Sri Lanka	9	✓	✓	✓	✓		
St. Barthelemy	9	✓	✓	✓	✓		
St. Eustatius	9	✓	✓	✓	✓		
St. Helena	10	✓	✓	✓	✓		
St. Kitts	9	✓			✓		
St. Lucia	9	✓	✓	✓	✓		
St. Maarten	9	✓	✓		✓		
St. Vincent	9	✓	✓	✓	✓		
Sudan	10	✓	✓		✓		
Suriname	9	✓	✓		✓		
Sweden	4	✓	✓	✓	✓	✓	✓
Switzerland	6	✓	✓	✓	✓	✓	✓
Syria	10	✓			✓		
Tahiti	10	✓			✓		
Taiwan, China	8	✓	✓	✓	✓		
Tajikistan	10	✓			✓		
Tanzania	10	✓	✓	✓	✓		
Thailand	8	✓	✓	✓	✓		
Timor-Leste	10	✓	✓	✓	✓		
Togo	10	✓	✓				
Tonga	10	✓			✓		
Trinidad and Tobago	9	✓			✓		
Tunisia	10	✓	✓	✓	✓		
Türkiye	6	✓			✓		
Turkmenistan	10	✓	✓		✓		
Turks and Caicos Islands	9	✓	✓	✓	✓		
Tuvalu	10	✓	✓	✓	✓		
Uganda	10	✓			✓		
Ukraine	6	✓	✓	✓	✓		
United Arab Emirates	8	✓	✓	✓	✓		
United Kingdom	5	✓	✓	✓	✓	✓	✓
United States of America	7	✓	✓	✓ (10:30)	✓		
Uruguay	9	✓	✓	✓	✓		
Uzbekistan	10	✓	✓	✓	✓		
Vanuatu	10	✓	✓		✓		
Vatican City	3	✓			✓		
Venezuela	9	✓	✓		✓		
Vietnam	8	✓	✓	✓	✓		
Virgin Islands (British)	9	✓	✓	✓	✓		
Virgin Islands (US)	9	✓	✓	✓	✓		
Yemen, Rep. of	10	✓	✓	✓	✓		
Zambia	10	✓	✓	✓	✓		
Zimbabwe	10	✓	✓	✓	✓		

doc = document contents only ✓ = document and non-document contents
For transit times and the availability of DHL Express 12:00 and DHL Express 9:00 for your origin and destination address, please refer to the DHL Capability Tool at dct.dhl.com. Pieces with a single base length up to 300cm are accepted. Additional surcharges may apply.

ZONES AND RATES

Connecting Your World
Sustainability
Service Offering
How to Ship with DHL Express
Digitalization
► Zones and Rates

Calculate the Price of Your Shipment	Optional Services	Surcharges	Customs Services	Service Capability and Rating Zones	Export Services	Import Services
--------------------------------------	-------------------	------------	------------------	-------------------------------------	-----------------	-----------------

Export rates by zone and product

DHL EXPRESS WORLDWIDE

Weight in kg	Zone 1	Zone 2	Zone 3	Zone 4	Zone 5	Zone 6	Zone 7	Zone 8	Zone 9	Zone 10
Envelopes up to 0,3kg										
0,3	20.290	20.710	21.136	21.948	21.136	21.967	22.254	25.254	30.420	34.935
Documents only up to 2kg										
0,5	23.965	24.428	25.149	26.100	25.587	26.572	26.915	32.525	38.078	45.163
1	29.682	30.885	31.956	33.087	32.334	33.507	33.793	40.586	47.012	54.248
1,5	34.924	36.591	37.965	39.434	38.291	39.649	39.838	47.400	54.877	62.185
2	40.166	42.297	43.974	45.781	44.248	45.791	45.883	54.214	62.742	70.122
Documents from 2,5kg and non-documents from 0,5kg										
0,5	23.965	24.428	25.149	26.100	29.682	32.485	35.124	48.314	51.883	60.749
1	29.682	30.885	31.956	33.087	37.509	39.802	42.280	58.016	61.448	71.743
1,5	34.924	36.591	37.965	39.434	44.419	46.195	48.432	66.167	69.965	81.517
2	40.166	42.297	43.974	45.781	51.329	52.588	54.584	74.318	78.482	91.291
2,5	45.417	47.959	49.937	52.082	58.186	58.981	60.736	82.469	86.999	101.065
3	48.054	52.026	54.667	57.578	63.626	64.642	66.254	89.514	94.695	109.894
3,5	50.691	56.093	59.397	63.074	69.066	70.303	71.772	96.559	102.391	118.723
4	53.328	60.160	64.127	68.570	74.506	75.964	77.290	103.604	110.087	127.552
4,5	55.965	64.227	68.857	74.066	79.946	81.625	82.808	110.649	117.783	136.381
5	58.602	68.294	73.587	79.562	85.386	87.286	88.326	117.694	125.479	145.210
5,5	61.809	71.933	77.866	84.267	90.306	91.556	92.393	124.492	132.761	153.605
6	65.016	75.572	82.145	88.972	95.226	95.826	96.460	131.290	140.043	162.000
6,5	68.223	79.211	86.424	93.677	100.146	100.096	100.527	138.088	147.325	170.395
7	71.430	82.850	90.703	98.382	105.066	104.366	104.594	144.886	154.607	178.790
7,5	74.637	86.489	94.982	103.087	109.986	108.636	108.661	151.684	161.889	187.185
8	77.844	90.128	99.261	107.792	114.906	112.906	112.728	158.482	169.171	195.580
8,5	81.051	93.767	103.540	112.497	119.826	117.176	116.795	165.280	176.453	203.975
9	84.258	97.406	107.819	117.202	124.746	121.446	120.862	172.078	183.735	212.370
9,5	87.465	101.045	112.098	121.907	129.666	125.716	124.929	178.876	191.017	220.765
10	90.672	104.684	116.377	126.612	134.586	129.986	128.996	185.674	198.299	229.160
11	95.326	110.036	123.601	133.610	143.118	138.526	137.228	196.864	210.257	242.832
12	99.980	115.388	130.825	140.608	151.650	147.066	145.460	208.054	222.215	256.504
13	104.634	120.740	138.049	147.606	160.182	155.606	153.692	219.244	234.173	270.176
14	109.288	126.092	145.273	154.604	168.714	164.146	161.924	230.434	246.131	283.848
15	113.942	131.444	152.497	161.602	177.246	172.686	170.156	241.624	258.089	297.520
16	118.596	136.796	159.721	168.600	185.778	181.226	178.388	252.814	270.047	311.192
17	123.250	142.148	166.945	175.598	194.310	189.766	186.620	264.004	282.005	324.864
18	127.904	147.500	174.169	182.596	202.842	198.306	194.852	275.194	293.963	338.536

Continues overleaf

ZONES AND RATES

Connecting Your World
Sustainability
Service Offering
How to Ship with DHL Express
Digitalization
► Zones and Rates

Calculate the Price of Your Shipment	Optional Services	Surcharges	Customs Services	Service Capability and Rating Zones	Export Services	Import Services
--------------------------------------	-------------------	------------	------------------	-------------------------------------	-----------------	-----------------

Export rates by zone and product

➔ DHL EXPRESS WORLDWIDE

Weight in kg	Zone 1	Zone 2	Zone 3	Zone 4	Zone 5	Zone 6	Zone 7	Zone 8	Zone 9	Zone 10
19	132.558	152.852	181.393	189.594	211.374	206.846	203.084	286.384	305.921	352.208
20	137.212	158.204	188.617	196.592	219.906	215.386	211.316	297.574	317.879	365.880
21	140.230	162.458	193.897	202.940	225.872	222.094	217.482	307.254	327.947	377.730
22	143.248	166.712	199.177	209.288	231.838	228.802	223.648	316.934	338.015	389.580
23	146.266	170.966	204.457	215.636	237.804	235.510	229.814	326.614	348.083	401.430
24	149.284	175.220	209.737	221.984	243.770	242.218	235.980	336.294	358.151	413.280
25	152.302	179.474	215.017	228.332	249.736	248.926	242.146	345.974	368.219	425.130
26	155.320	183.728	220.297	234.680	255.702	255.634	248.312	355.654	378.287	436.980
27	158.338	187.982	225.577	241.028	261.668	262.342	254.478	365.334	388.355	448.830
28	161.356	192.236	230.857	247.376	267.634	269.050	260.644	375.014	398.423	460.680
29	164.374	196.490	236.137	253.724	273.600	275.758	266.810	384.694	408.491	472.530
30	167.392	200.744	241.417	260.072	279.566	282.466	272.976	394.374	418.559	484.380
40	185.172	238.444	289.207	314.202	335.486	341.706	340.686	474.974	523.179	607.060
50	202.952	276.144	336.997	368.332	391.406	400.946	408.396	555.574	627.799	729.740
60	220.732	313.844	384.787	422.462	447.326	460.186	476.106	636.174	732.419	852.420
70	238.512	351.544	432.577	476.592	503.246	519.426	543.816	716.774	837.039	975.100
For each additional 0,5kg										
Above 10	2.327	2.676	3.612	3.499	4.266	4.270	4.116	5.595	5.979	6.836
Above 20	1.509	2.127	2.640	3.174	2.983	3.354	3.083	4.840	5.034	5.925
For each additional 1kg										
30,1 - 70,0	1.778	3.770	4.779	5.413	5.592	5.924	6.771	8.060	10.462	12.268
70,1 - 300,0	1.814	3.341	4.779	5.484	5.633	6.865	8.144	10.843	12.021	14.036
300,1 - 3.000*	2.270	3.509	5.025	5.706	6.076	7.165	8.627	11.402	12.605	14.741

DHL Express 12:00 – Guaranteed delivery before 12:00 on the next possible working day to over 176 countries worldwide. Add 1.985 HUF to the DHL Express Worldwide prices.

DHL Express 9:00 (10:30 to the USA) – Guaranteed delivery before 9:00 on the next possible working day to over 143 countries worldwide. Add 13.020 HUF to the DHL Express Worldwide prices.

Rates are rounded up to the nearest 0.5kg for shipments up to 30kg, and to the nearest 1kg thereafter. Each piece weight is rounded up to the nearest 0.5kg.

Rates are in HUF and exclude customs duties, taxes, clearance-related charges, VAT and all surcharges. Terms and conditions apply – see [mydhl.express.dhl](#) for details.

*DHL Express does not accept shipments exceeding 3.000kg, or containing pieces exceeding 1.000kg or 300cm in length, and/or not meeting DHL standards for packing. Refer to our Packing Guide on [mydhl.express.dhl](#). These network restrictions are subject to change with 30 days' notice.

In the event any country leaves the European Union, DHL reserves the right to change rates or zones with 30 days' notice.

ZONES AND RATES

Connecting Your World
Sustainability
Service Offering
How to Ship with DHL Express
Digitalization
► Zones and Rates

Calculate the Price of Your Shipment	Optional Services	Surcharges	Customs Services	Service Capability and Rating Zones	Export Services	Import Services
--------------------------------------	-------------------	------------	------------------	-------------------------------------	-----------------	-----------------

Export rates by zone and product

DHL ECONOMY SELECT

Weight in kg	Zone 1	Zone 2	Zone 3	Zone 4	Zone 5	Zone 6
Documents and non-documents from 1kg						
1	29.968	31.256	32.066	33.218	40.755	42.871
2	35.518	37.368	39.209	40.899	49.835	51.734
3	40.037	42.389	45.056	47.232	57.268	58.871
4	44.556	47.410	50.903	53.565	64.701	66.008
5	49.075	52.431	56.750	59.898	72.134	73.145
6	52.647	56.250	61.081	64.910	77.637	78.407
7	56.219	60.069	65.412	69.922	83.140	83.669
8	59.791	63.888	69.743	74.934	88.643	88.931
9	63.363	67.707	74.074	79.946	94.146	94.193
10	66.935	71.526	78.405	84.958	99.649	99.455
11	67.788	72.396	79.469	86.177	101.002	101.045
12	68.641	73.266	80.533	87.396	102.355	102.635
13	69.494	74.136	81.597	88.615	103.708	104.225
14	70.347	75.006	82.661	89.834	105.061	105.815
15	71.200	75.876	83.725	91.053	106.414	107.405
16	72.053	76.746	84.789	92.272	107.767	108.995
17	72.906	77.616	85.853	93.491	109.120	110.585
18	73.759	78.486	86.917	94.710	110.473	112.175
19	74.612	79.356	87.981	95.929	111.826	113.765
20	75.465	80.226	89.045	97.148	113.179	115.355
21	76.242	81.079	90.043	98.212	114.448	116.602
22	77.019	81.932	91.041	99.276	115.717	117.849
23	77.796	82.785	92.039	100.340	116.986	119.096
24	78.573	83.638	93.037	101.404	118.255	120.343
25	79.350	84.491	94.035	102.468	119.524	121.590
26	80.127	85.344	95.033	103.532	120.793	122.837
27	80.904	86.197	96.031	104.596	122.062	124.084
28	81.681	87.050	97.029	105.660	123.331	125.331
29	82.458	87.903	98.027	106.724	124.600	126.578
30	83.235	88.756	99.025	107.788	125.869	127.825

Continues overleaf

ZONES AND RATES

Connecting Your World
Sustainability
Service Offering
How to Ship with DHL Express
Digitalization
► Zones and Rates

Calculate the Price of Your Shipment	Optional Services	Surcharges	Customs Services	Service Capability and Rating Zones	Export Services	Import Services
--------------------------------------	-------------------	------------	------------------	-------------------------------------	-----------------	-----------------

Export rates by zone and product

➔ DHL ECONOMY SELECT

Weight in kg	Zone 1	Zone 2	Zone 3	Zone 4	Zone 5	Zone 6
40	89.885	96.406	107.895	117.258	136.859	139.365
50	96.535	104.056	116.765	126.728	147.849	150.905
60	103.185	111.706	125.635	136.198	158.839	162.445
70	109.835	119.356	134.505	145.668	169.829	173.985
80	115.455	125.602	142.311	154.410	179.325	183.619
90	121.075	131.848	150.117	163.152	188.821	193.253
100	126.695	138.094	157.923	171.894	198.317	202.887
For each additional 1kg						
Above 30	665	765	887	947	1.099	1.154
For each additional 5kg						
Above 70	2.810	3.123	3.903	4.371	4.748	4.817
Above 300*	2.993	3.801	4.177	4.441	5.125	5.127

Rates are rounded up to the nearest 1kg for shipments up to 70kg, and to the nearest 5kg thereafter. Each piece weight is rounded up to the nearest 1kg.

Rates are in HUF and exclude customs duties, taxes, clearance-related charges, VAT and all surcharges. Terms and conditions apply – see mydhl.express.dhl for details.

*DHL Express does not accept shipments exceeding 1.000kg, or containing pieces exceeding 1.000kg or 300cm in length, and/or not meeting DHL standards for packing. Refer to our Packing Guide on mydhl.express.dhl. These network restrictions are subject to change with 30 days' notice.

In the event any country leaves the European Union, DHL reserves the right to change rates or zones with 30 days' notice.

ZONES AND RATES

Connecting Your World
Sustainability
Service Offering
How to Ship with DHL Express
Digitalization
► Zones and Rates

Calculate the Price of Your Shipment	Optional Services	Surcharges	Customs Services	Service Capability and Rating Zones	Export Services	Import Services
--------------------------------------	-------------------	------------	------------------	-------------------------------------	-----------------	-----------------

Import rates by zone and product

DHL EXPRESS WORLDWIDE IMPORT

Weight in kg	Zone 1	Zone 2	Zone 3	Zone 4	Zone 5	Zone 6	Zone 7	Zone 8	Zone 9	Zone 10
Documents only up to 2kg										
0,5	32.393	36.026	38.608	40.119	38.608	39.724	39.843	46.639	50.376	63.132
1	38.872	42.597	44.735	47.136	44.790	46.944	47.929	53.530	59.338	74.391
1,5	44.835	48.656	51.493	55.000	51.372	54.323	54.753	61.368	67.288	84.126
2	50.798	54.715	58.251	62.864	57.954	61.702	61.577	69.206	75.238	93.861
Documents from 2,5kg and non-documents from 0,5kg										
0,5	32.393	36.026	38.608	40.119	44.786	45.488	52.348	61.822	67.359	77.510
1	38.872	42.597	44.735	47.136	51.958	52.798	60.973	73.567	77.986	89.762
1,5	44.835	48.656	51.493	55.000	59.594	59.554	68.251	83.071	87.212	100.358
2	50.798	54.715	58.251	62.864	67.230	66.310	75.529	92.575	96.438	110.954
2,5	57.035	61.371	64.915	70.685	74.758	73.066	82.871	102.079	105.664	121.550
3	60.343	66.597	70.967	77.528	81.777	80.366	90.156	110.388	114.310	131.348
3,5	63.651	71.823	77.019	84.371	88.796	87.666	97.441	118.697	122.956	141.146
4	66.959	77.049	83.071	91.214	95.815	94.966	104.726	127.006	131.602	150.944
4,5	70.267	82.275	89.123	98.057	102.834	102.266	112.011	135.315	140.248	160.742
5	73.575	87.501	95.175	104.900	109.853	109.566	119.296	143.624	148.894	170.540
5,5	76.865	90.736	98.800	110.836	114.241	114.998	125.354	151.862	157.064	180.419
6	80.155	93.971	102.425	116.772	118.629	120.430	131.412	160.100	165.234	190.298
6,5	83.445	97.206	106.050	122.708	123.017	125.862	137.470	168.338	173.404	200.177
7	86.735	100.441	109.675	128.644	127.405	131.294	143.528	176.576	181.574	210.056
7,5	90.025	103.676	113.300	134.580	131.793	136.726	149.586	184.814	189.744	219.935
8	93.315	106.911	116.925	140.516	136.181	142.158	155.644	193.052	197.914	229.814
8,5	96.605	110.146	120.550	146.452	140.569	147.590	161.702	201.290	206.084	239.693
9	99.895	113.381	124.175	152.388	144.957	153.022	167.760	209.528	214.254	249.572
9,5	103.185	116.616	127.800	158.324	149.345	158.454	173.818	217.766	222.424	259.451
10	106.475	119.851	131.425	164.260	153.733	163.886	179.876	226.004	230.594	269.330
11	112.177	126.147	138.345	173.468	161.759	173.690	189.886	238.064	244.466	286.182
12	117.879	132.443	145.265	182.676	169.785	183.494	199.896	250.124	258.338	303.034
13	123.581	138.739	152.185	191.884	177.811	193.298	209.906	262.184	272.210	319.886
14	129.283	145.035	159.105	201.092	185.837	203.102	219.916	274.244	286.082	336.738
15	134.985	151.331	166.025	210.300	193.863	212.906	229.926	286.304	299.954	353.590
16	140.687	157.627	172.945	219.508	201.889	222.710	239.936	298.364	313.826	370.442
17	146.389	163.923	179.865	228.716	209.915	232.514	249.946	310.424	327.698	387.294
18	152.091	170.219	186.785	237.924	217.941	242.318	259.956	322.484	341.570	404.146

Continues overleaf

ZONES AND RATES

Connecting Your World
Sustainability
Service Offering
How to Ship with DHL Express
Digitalization
► Zones and Rates

Calculate the Price of Your Shipment	Optional Services	Surcharges	Customs Services	Service Capability and Rating Zones	Export Services	Import Services
--------------------------------------	-------------------	------------	------------------	-------------------------------------	-----------------	-----------------

Import rates by zone and product

➔ DHL EXPRESS WORLDWIDE IMPORT

Weight in kg	Zone 1	Zone 2	Zone 3	Zone 4	Zone 5	Zone 6	Zone 7	Zone 8	Zone 9	Zone 10
19	157.793	176.515	193.705	247.132	225.967	252.122	269.966	334.544	355.442	420.998
20	163.495	182.811	200.625	256.340	233.993	261.926	279.976	346.604	369.314	437.850
21	168.991	188.091	208.751	264.806	243.417	270.578	290.310	358.954	382.136	452.244
22	174.487	193.371	216.877	273.272	252.841	279.230	300.644	371.304	394.958	466.638
23	179.983	198.651	225.003	281.738	262.265	287.882	310.978	383.654	407.780	481.032
24	185.479	203.931	233.129	290.204	271.689	296.534	321.312	396.004	420.602	495.426
25	190.975	209.211	241.255	298.670	281.113	305.186	331.646	408.354	433.424	509.820
26	196.471	214.491	249.381	307.136	290.537	313.838	341.980	420.704	446.246	524.214
27	201.967	219.771	257.507	315.602	299.961	322.490	352.314	433.054	459.068	538.608
28	207.463	225.051	265.633	324.068	309.385	331.142	362.648	445.404	471.890	553.002
29	212.959	230.331	273.759	332.534	318.809	339.794	372.982	457.754	484.712	567.396
30	218.455	235.611	281.885	341.000	328.233	348.446	383.316	470.104	497.534	581.790
40	245.715	279.851	331.465	401.540	385.743	418.136	475.566	592.344	622.644	733.070
50	272.975	324.091	381.045	462.080	443.253	487.826	567.816	714.584	747.754	884.350
60	300.235	368.331	430.625	522.620	500.763	557.516	660.066	836.824	872.864	1.035.630
70	327.495	412.571	480.205	583.160	558.273	627.206	752.316	959.064	997.974	1.186.910
For each additional 0,5kg										
Above 10	2.851	3.148	3.460	4.604	4.013	4.902	5.005	6.030	6.936	8.426
Above 20	2.748	2.640	4.063	4.233	4.712	4.326	5.167	6.175	6.411	7.197
For each additional 1kg										
30,1 - 70,0	2.726	4.424	4.958	6.054	5.751	6.969	9.225	12.224	12.511	15.128
70,1 - 300,0	2.866	4.885	5.367	7.164	6.215	8.909	10.865	13.597	14.652	15.933
300,1 - 300*	2.896	4.922	5.408	7.233	6.265	8.967	10.941	13.750	15.323	16.034

DHL Express 12:00 – Guaranteed delivery before 12:00 on the next possible working day from over 176 countries worldwide. Add 1.985 HUF to the DHL Express Worldwide Import prices.

Rates are rounded up to the nearest 0.5kg for shipments up to 30kg, and to the nearest 1kg thereafter. Each piece weight is rounded up to the nearest 0.5kg.

Rates are in HUF and exclude customs duties, taxes, clearance-related charges, VAT and all surcharges. Terms and conditions apply – see mydhl.express.dhl for details.

*DHL Express does not accept shipments exceeding 3.000kg, or containing pieces exceeding 1.000kg or 300cm in length, and/or not meeting DHL standards for packing. Refer to our Packing Guide on mydhl.express.dhl. These network restrictions are subject to change with 30 days' notice.

In the event any country leaves the European Union, DHL reserves the right to change rates or zones with 30 days' notice.

ZONES AND RATES

Connecting Your World
Sustainability
Service Offering
How to Ship with DHL Express
Digitalization
► Zones and Rates

Calculate the Price of Your Shipment	Optional Services	Surcharges	Customs Services	Service Capability and Rating Zones	Export Services	Import Services
--------------------------------------	-------------------	------------	------------------	-------------------------------------	-----------------	-----------------

Import rates by zone and product

DHL ECONOMY SELECT IMPORT

Weight in kg	Zone 1	Zone 2	Zone 3	Zone 4	Zone 5	Zone 6
Documents and non-documents from 1kg						
1	31.578	32.941	33.801	35.007	42.961	44.410
2	37.411	39.394	41.344	43.099	52.384	53.761
3	42.175	44.678	47.519	49.779	60.096	61.271
4	46.939	49.962	53.694	56.459	67.808	68.781
5	51.703	55.246	59.869	63.139	75.520	76.291
6	55.479	59.285	64.429	68.416	81.067	81.786
7	59.255	63.324	68.989	73.693	86.614	87.281
8	63.031	67.363	73.549	78.970	92.161	92.776
9	66.807	71.402	78.109	84.247	97.708	98.271
10	70.583	75.441	82.669	89.524	103.255	103.766
11	71.479	76.357	83.803	90.807	104.671	105.447
12	72.375	77.273	84.937	92.090	106.087	107.128
13	73.271	78.189	86.071	93.373	107.503	108.809
14	74.167	79.105	87.205	94.656	108.919	110.490
15	75.063	80.021	88.339	95.939	110.335	112.171
16	75.959	80.937	89.473	97.222	111.751	113.852
17	76.855	81.853	90.607	98.505	113.167	115.533
18	77.751	82.769	91.741	99.788	114.583	117.214
19	78.647	83.685	92.875	101.071	115.999	118.895
20	79.543	84.601	94.009	102.354	117.415	120.576
21	80.439	85.517	95.147	103.637	118.831	122.257
22	81.335	86.433	96.285	104.920	120.247	123.938
23	82.231	87.349	97.423	106.203	121.663	125.619
24	83.127	88.265	98.561	107.486	123.079	127.300
25	84.023	89.181	99.699	108.769	124.495	128.981
26	84.919	90.097	100.837	109.655	125.381	130.662
27	85.815	91.013	101.975	110.541	126.267	132.343
28	86.711	91.929	103.113	111.427	127.153	134.024
29	87.607	92.845	104.251	112.313	128.039	135.705
30	88.503	93.761	105.389	113.200	128.925	137.386

Continues overleaf

ZONES AND RATES

Connecting Your World
Sustainability
Service Offering
How to Ship with DHL Express
Digitalization
► Zones and Rates

Calculate the Price of Your Shipment	Optional Services	Surcharges	Customs Services	Service Capability and Rating Zones	Export Services	Import Services
--------------------------------------	-------------------	------------	------------------	-------------------------------------	-----------------	-----------------

Import rates by zone and product

➔ DHL ECONOMY SELECT IMPORT

Weight in kg	Zone 1	Zone 2	Zone 3	Zone 4	Zone 5	Zone 6
40	94.993	102.011	114.249	124.244	142.695	145.846
50	102.243	110.461	123.939	134.794	154.795	158.436
60	109.493	118.911	133.629	145.344	166.895	171.026
70	116.743	127.361	143.319	155.894	178.995	183.616
80	122.833	134.113	151.765	165.328	189.539	193.980
90	128.923	140.865	160.211	174.762	200.083	204.344
100	135.013	147.617	168.657	184.196	210.627	214.708
For each additional 1kg						
Above 30	725	845	969	1.055	1.210	1.259
For each additional 5kg						
Above 70	3.045	3.376	4.223	4.717	5.272	5.182
Above 300*	3.295	4.177	4.572	4.866	5.510	5.187

Rates are rounded up to the nearest 1kg for shipments up to 70kg, and to the nearest 5kg thereafter. Each piece weight is rounded up to the nearest 1kg.

Rates are in HUF and exclude customs duties, taxes, clearance-related charges, VAT and all surcharges. Terms and conditions apply – see mydhl.express.dhl for details.

*DHL Express does not accept shipments exceeding 1.000kg, or containing pieces exceeding 1.000kg or 300cm in length, and/or not meeting DHL standards for packing. Refer to our Packing Guide on mydhl.express.dhl. These network restrictions are subject to change with 30 days’ notice.

In the event any country leaves the European Union, DHL reserves the right to change rates or zones with 30 days’ notice.

READY TO SHIP?



Get a quote



+36 1 2 45 45 45



Chat



ugyfelszolgalat.hu@dhl.com



Find your nearest DHL Service Point

DHL Express Hungary Ltd.

H-1185 Budapest
BUD International Airport
Terminal 1, DHL building (302)
1185 Budapest

Valid: 1st January 2024
For public use

The information in this guide is correct as of 1st January 2024. DHL reserves the right to amend or modify any of the information at any time.

