



DHL EXPRESS

# SERVICE & RATE GUIDE 2024

## MACEDONIA

### GET STARTED

[Connecting Your World](#)

[Dear Customer](#)

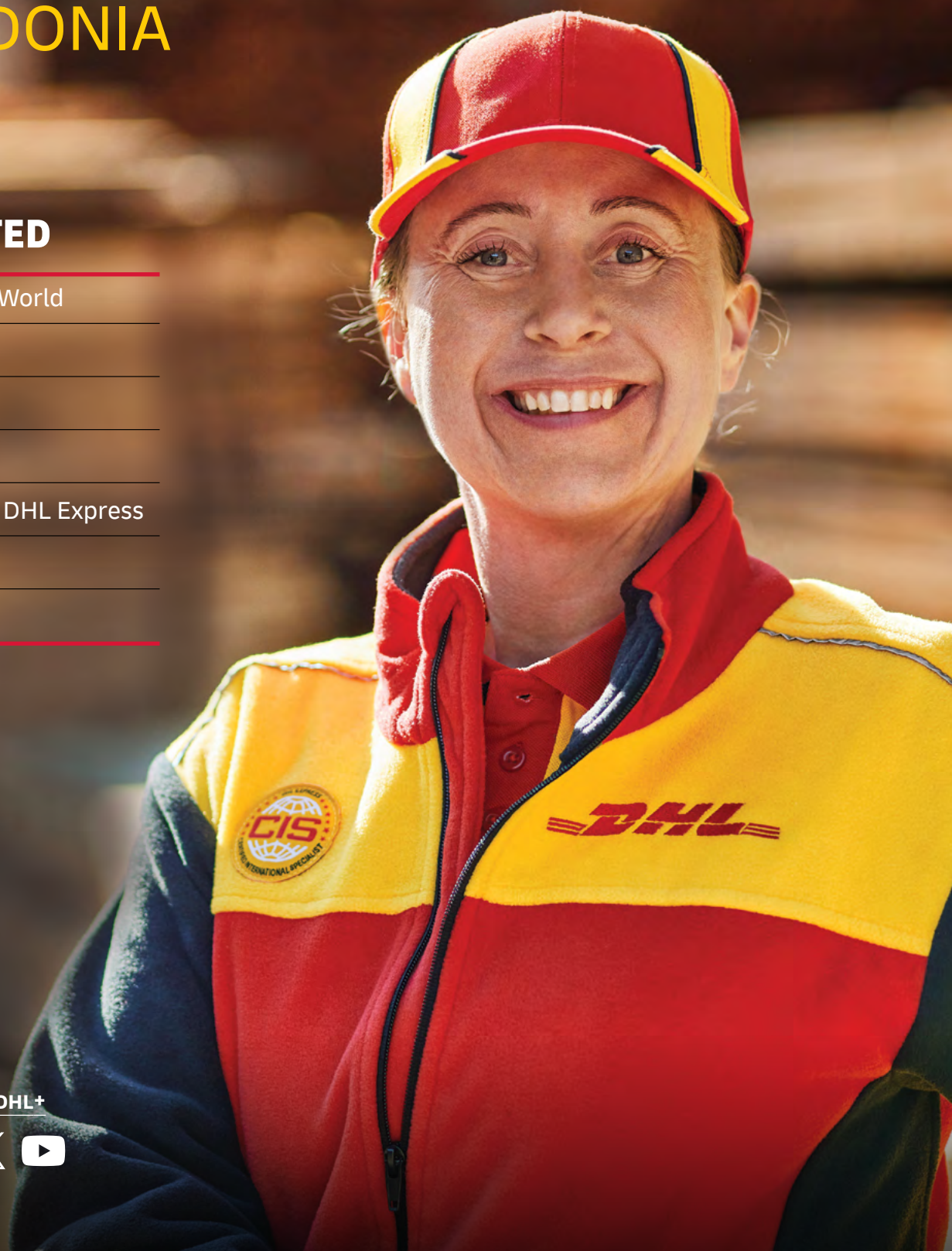
[Sustainability](#)

[Service Offering](#)

[How to Ship with DHL Express](#)

[Digitalization](#)

[Zones and Rates](#)



Ready to ship?  
Get a quote from [MyDHL+](#)



# CONNECTING YOUR WORLD

**220**  
countries and  
territories served



**500+**  
airports served  
worldwide



**3.500**  
facilities

**300+**  
aircraft

**2.400+**  
flights per day



**34.500**  
vehicles



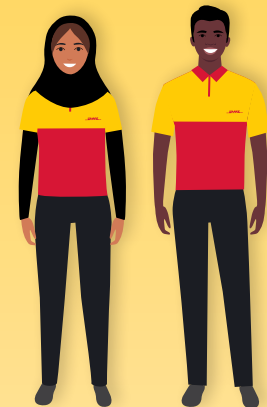
**148.000**  
Service Points

By the year 2050, DHL Group aims to achieve net zero emissions logistics



**296**  
million

Time Definite shipments per year



**120.000**  
employees



**415**  
TAPA\* certifications



Figures are global and are approximate as of the end of 2022  
\*TAPA = Transported Asset Protection Association

# DEAR CUSTOMER

Welcome to the DHL Express Service and Rate Guide for 2024. If you are reading this, it means you have a personal or business need to move something, from somewhere, to somewhere and you want it done quickly, securely and reliably. We are here to help you!

As the global market leader in Time Definite International (TDI) shipping and courier delivery, and the most international company in the world, this is what we do! We move over 1 million shipments every working day, from point A to point B in 220 countries and territories, as quickly, securely and reliably as possible and with as much transparency as possible. Over 2,5 million customers around the world put their trust in us, and our team of 120,000+ Certified International Specialists strive to exceed their expectations on every single shipment.

Global logistics appears to be finally seeing the end of COVID-driven disruptions but yet is not completely back to the 'normal' of the previous time period. Overall, the global macroeconomic situation has started to stabilize although uncertainty remains. Aviation networks remain volatile in many parts of the world and the crisis in Europe continues to add complexity to global logistics. In the face of these and other challenges, we have continued to invest in safeguarding the resilience of our global network, which enables us to provide secure and reliable supply chain solutions to support our customers.

**Sustainability** continues to grow in focus in all logistics conversations and I invite you to learn how our [GoGreen Plus](#) service, introduced in 2023, and our leveraging of Sustainable

Aviation Fuel (SAF) can directly help make your products more environmentally friendly – a growing criterion in the purchase decision process of both individual consumers and businesses.

**Digitalization** retains its laser focus at DHL and we have brought to market a slew of tools to support our customers, in particular small businesses. For example, the new [My Global Trade Services tool](#) aims to reduce customs complexity and improve getting clearance 'first time right!'. The [DHL Express Commerce tool](#) can help small businesses fast-forward taking their online sales channels international. Small business owners, let us help support your growth by enabling you to Save More as you Ship More! You could benefit from our **Dynamic Discounting** commercial options. Interested? [Let's connect!](#)

In conclusion, please use this guide to learn how DHL Express products, services and tools can meet your logistics needs. **Thank you** for trusting us to be your Logistics Partner of Choice. Tell us how we can support your growth: reach out to us on [MyDHL+](#) or by calling Customer Service on 02/15 333.

Sincerely,

DHL Express Macedonia



# SUSTAINABILITY

Connecting Your World
► Sustainability
Service Offering
How to Ship with DHL Express
Digitalization
Zones and Rates

Everything we do is to serve one purpose: **Connecting people, improving lives.** To fulfill this purpose, we need to make every dimension of our business sustainable. Our Sustainability Roadmap sets out our ambitions in three focus areas: Environment, Social and Governance (ESG). Find case studies and more details [here](#).

## OUR TARGETS FOR 2030

**<29 million**

Reduction in our greenhouse gas emissions to under 29 million tonnes

**€7 billion**

Investment of €7 billion in green technologies

**SBTi**


Commitment to SBTi (Science-Based Targets initiatives)

**30%**

SAF blending of 30% for all air transport

## CLEAN OPERATIONS FOR CLIMATE PROTECTION

### Leader in sustainable aviation

 Our GoGreen Plus service allows you to embrace green logistics by insetting, or reducing, the CO2 within your own supply chain. We do this by using Sustainable Aviation Fuel (SAF). And that is not only good for the environment, it can benefit you by helping you to report your CO2 emissions. Here is how to get on board:

- With the GoGreen Plus **basic contract**, 30% CO2 reduction (insetting) is applied to all your express shipments via air.
- In **MyDHL+**, you can opt for GoGreen Plus and choose which shipments to invest in with SAF.
- Alternatively, choose a **customized offer** for even more CO2 reduction.

Our GoGreen Plus service is made possible following DHL's landmark collaborations with bp and Neste to supply DHL Express with SAF, which is expected to save some **two million tons** of carbon dioxide emissions over the aviation fuel cycle.

### Green last-mile and line-haul

Electrify **60%** of last-mile delivery vehicles and increase share of sustainable fuels in line haul to more than **30%** by 2030.

### Carbon neutral buildings

Design **100%** of all new buildings to be carbon neutral.

### Green product portfolio

Our GoGreen Plus service allows customers shipping TDI to inset their CO2 air emissions by up to **100%**.

Through collaboration, we can make our supply chains more sustainable. Read more about the Era of Sustainable Logistics.



## GREAT COMPANY TO WORK FOR ALL

- Attract and retain the best talent
- Strong 'Safety First' culture
- Diverse and inclusive workplace

## HIGHLY TRUSTED COMPANY

- Compliance as an integral part of daily business
- Effective governance set-up across our organization
- Like-minded and compliant suppliers and partners



# SERVICE OFFERING

[Connecting Your World](#)
[Sustainability](#)
[▶ Service Offering](#)
[How to Ship with DHL Express](#)
[Digitalization](#)
[Zones and Rates](#)
[Export Services](#)
[Import Services](#)
[Domestic Services](#)
[Enabling Your Growth](#)
[Optional Services](#)
[Surcharges](#)
[Customs Services](#)

Our core services are Time Definite International (TDI) and offer you secure door-to-door delivery of goods and documents to and from virtually every country and territory. Whether you need your shipments delivered at the start, middle or end of a business day, our services offer full track-and-trace visibility so you always know where your shipments are.

## EXPORT SERVICES

### DHL Express Worldwide

Our most popular product, DHL Express Worldwide, offers an end of business day delivery service around the world for pieces up to 70kg and shipments up to 3.000kg.

We deliver reliably and quickly to more global destinations across a single integrated network than any other express delivery company.

### DHL Express 12:00

With DHL Express 12:00 you will receive your shipments before 12 noon on the next possible business day. DHL Express 12:00 offers a money-back guarantee\* and allows for pieces up to 70kg and shipments up to 300kg.

### DHL Express 9:00 (10:30 to the USA)

Our premium time-definite service offers a delivery before 9:00 (10:30 to the USA) on lanes that guarantee either a next or second business day delivery. DHL Express 9:00 is offered to the majority of business centers in Europe, the Middle East, Africa, Asia and the Americas. DHL Express 9:00 features a money-back guarantee\* and is suitable for pieces up to 30kg and shipments up to 300kg.

### Our international services at a glance

	DHL Express Worldwide	DHL Express 12:00	DHL Express 9:00 (10:30 to the USA)
<b>Service description</b>	Delivery by the end of the next possible business day	Delivery before 12 noon on the next possible business day	Delivery before 9:00 (10:30 to the USA) on the next possible business day
<b>Money-back guarantee</b>	No	Yes*	Yes*
<b>Countries and territories covered</b>	More than 220	151	86
<b>Delivery attempts</b>	2	2	2
<b>Maximum piece weight (not on pallet)</b>	70kg	70kg	30kg
<b>Maximum pieces per shipment</b>	–	10	10
<b>Maximum piece dimensions (L x W x H)**</b>	120 x 80 x 80cm	120 x 80 x 80cm	120 x 80 x 80cm
<b>Maximum pallet weight</b>	1.000kg	Pallets not accepted	Pallets not accepted
<b>Maximum shipment weight</b>	3.000kg	300kg	300kg
<b>Maximum pallet dimensions (L x W x H)</b>	300 x 200 x 160cm	Pallets not accepted	Pallets not accepted

\*Additional terms and conditions apply – see [mydhl.express.dhl](https://mydhl.express.dhl) for details.

\*\*A shipment is deemed unacceptable if its packaging is absent or inadequate, or if transporting the shipment would present risks of damaging equipment, other packages or injuring personnel. DHL reserves the right to either not accept or return the shipment to the shipper. These network restrictions are subject to change with 30 days' notice.

# SERVICE OFFERING

Export  
Services

Import  
Services

Domestic  
Services

Enabling Your  
Growth

Optional  
Services

Surcharges

Customs  
Services

## IMPORT SERVICES

With the DHL Express Worldwide Import product, you can import shipments from over 220 countries and territories in the world. This is more than any other express delivery company can offer. What's more, customers in, say, the USA can order an import from China not just to the USA, but to any other destinations as well – we call this a Third Country shipment.

There is no need for local brokers or forwarders to get involved in any part of the process. You are in full control, and able to manage all aspects of your imports in a very simple way.

You can order an import from another country, to be delivered to your country or any other destination, by using our dedicated electronic shipping solution for imports. You will have one account number, one invoice in a single currency and a fixed price that means you know exactly what you will pay.

## DOMESTIC SERVICES

If you want to ship documents or goods within your own country, we can offer our Time Definite Domestic products with delivery time guarantees of 12:00, 9:00 or the end of the next possible business day.

## DHL EXPRESS ENVELOPE

Our DHL Express Envelope service provides door-to-door international delivery of lightweight document shipments by the end of the next possible business day. It also offers you carbon neutral shipping at no extra charge.

- Up to 300g
- Global coverage
- Document shipments only
- Packaging envelope included
- GoGreen Plus carbon-reduced service



# SERVICE OFFERING

[Connecting Your World](#)
[Sustainability](#)
[▶ Service Offering](#)
[How to Ship with DHL Express](#)
[Digitalization](#)
[Zones and Rates](#)
[Export Services](#)
[Import Services](#)
[Domestic Services](#)
[Enabling Your Growth](#)
[Optional Services](#)
[Surcharges](#)
[Customs Services](#)

## GLOBAL TRADE AND YOU

A series of crises has put international trade at the center of the debate about economic growth and resilience. What are the current prospects for globalization and trade? Is there cause for concern? Is trade still an attractive source of growth? We deep dived into the data and conducted a thorough, fact-based analysis – and the results might just surprise you. In partnership with NYU Stern's Center for the Future of Management and its DHL Initiative on Globalization, the 'DHL Trade Growth Atlas' examines global trade growth trends and the trade patterns of 173 countries worldwide that combined make up more than 99% of world trade, GDP and population. Despite recent shocks and worsening macroeconomic conditions in much of the world, the study overall gives an upbeat assessment of the prospects for future trade growth.

We know the value of understanding the long-term global trade landscape for navigating short-term shifts in economic and trade growth. We help our customers make sense of what this means for their business to maximize the enormous potential of globalization and international trade.

**Trade growth expanding** across a broader range of countries

**New poles emerging:** world trade center of gravity moving south

**Shift in mix of products** traded by advanced vs. emerging economies



## POWERING UP THE POTENTIAL OF INTERNATIONAL E-COMMERCE

### Discover and grow

Visit [dhl.com/discover](https://dhl.com/discover) to learn more about how DHL helps e-commerce companies ranging from start-ups to large enterprises, advising them on how to grow internationally. Our e-commerce focussed country guides, white papers such as 'The Ultimate B2B E-Commerce Guide', customer and trend research and market intelligence tools can enable you to better understand your customers and their shipping requirements to take the next step in your e-commerce journey.

### International e-commerce

We help our customers go global with ease and speed to maximize the enormous potential of international e-commerce. DHL supports our customers' international growth with:

- Global reach
- Express delivery options
- Flexible delivery options for receivers (see 'On Demand Delivery' on page 17)
- Duty billing options and customs expertise
- Consultative advice for our customers on how to increase sales and grow cross-border

### Fast, flexible and easy

Consumers expect everything 'on demand' – anytime, anywhere. DHL shipping options give customers a distinct competitive edge: over 90% of online consumers look at the available delivery options before going to the checkout, and their decision is influenced by delivery speed, flexibility and ease.



# SERVICE OFFERING

---

 Connecting Your World
 

---

 Sustainability
 

---

 ► Service Offering
 

---

 How to Ship with DHL Express
 

---

 Digitalization
 

---

 Zones and Rates
 

---

 Export  
Services

 Import  
Services

 Domestic  
Services

 Enabling Your  
Growth

 Optional  
Services

Surcharges

 Customs  
Services

## OPTIONAL SERVICES

[View charges](#)

DHL Express offers a wide range of optional services – from non-standard deliveries and billing options to climate neutral shipping.

### GoGreen Plus

When selected, DHL will reduce (inset) CO2 emissions from air transport through the purchase of Sustainable Aviation Fuel (SAF). SAF can reduce lifecycle carbon emissions by up to 80% compared to traditional jet fuel. GoGreen Plus – Carbon Reduced service, supports Scope 3 emission reductions in alignment with the Science Based Target initiative. The process is audited annually by SGS (Société Générale de Surveillance) to ensure compliance with regulations and standards. Alternative reduction levels and CO2 emission reports are available on contractual basis only.

### Dedicated Pickup

If your business needs a dedicated vehicle to collect unusual shipments, or a pickup outside normal business hours, we can arrange this for you.

### Dedicated Delivery

On customer request, an immediate or non-routine, once-only delivery of a shipment within a normal working day or a holiday that involves a specific vehicle such as tail lift truck or more than one courier.

### Saturday Pickup

In countries where Saturday is not a normal working day, DHL can arrange an ad-hoc pickup of smaller shipments up to 30kg. The service is available at selected postal locations only.

### Saturday Delivery

We offer Saturday delivery services to key cities in more than 70 countries.

### Shipment Insurance

We recommend this comprehensive protection for your valuable or personal shipments, giving you peace of mind in the unlikely event of physical damage or loss. The service is subject to specific limitations and exclusions as described in our [Terms and Conditions](#).

### Extended Liability

If you are sending valuable documents such as passports, visa applications or regulatory certificates you can extend coverage and compensation beyond the DHL standard liability described in our [Terms and Conditions](#). In the event of full or partial loss to a document shipment, a fixed compensation will be paid regardless of the replacement cost of the document.

### Shipment Preparation

This is a convenient, fast and reliable service for seasonal or irregular shipments that require extra resources for their preparation. DHL manages the entire process of waybill preparation, content selection, labeling and packaging, then sends the shipments to the designated addresses.

### Packaging Supplies

Charges apply for all DHL standard packaging items including plastic flyers provided in bulks or stacks.

## DUTY BILLING SERVICES

### Duty Tax Paid

DHL can arrange for the shipper or a third party to be billed for any duties and taxes payable at destination, rather than the receiver of the shipment being billed. Charges apply whenever duties, taxes or other regulatory fees occur, and shipper has requested that those are to be billed outside of the destination country.

### Duty Tax Processing: Account Customers

DHL will accelerate the customs clearance process making prompt payment of duty and tax charges relating to a shipment, while the receiver defers payment until an agreed date.

### Duty Tax Processing: Non-Account Customers

This default service covers any import of a non-document shipment for which DHL has used its own credit line with Customs to advance or guarantee the payment of duties, taxes or regulatory charges on behalf of importers and consumers with whom DHL has no contract.



# SERVICE OFFERING

Export  
Services

Import  
Services

Domestic  
Services

Enabling Your  
Growth

Optional  
Services

Surcharges

Customs  
Services

## ➔ OPTIONAL SERVICES

[View charges](#)

### Verbal Notification

Customer Service will contact you by phone and provide verbal updates on agreed key transport events or incidents with a potential impact on transit time.

### Hold for Collection

On shipper request, a shipment is held at the default DHL delivery facility at destination for consignee collection, rather than attempt a delivery at the receiver's address. The service is booked through Customer Service or supporting shipping tools. The destination will notify the receiver when and at which facility the shipment is ready to collect. A consignee cell phone number is mandatory.

### Residential Address

Customers shipping to a home or private residence can activate specific delivery options by designating the delivery address as residential. For such shipments, DHL will proactively notify the receiver via email or SMS about the shipment's progress. Receivers can then select the most suitable delivery option via [On Demand Delivery](#).

### Direct Signature

If you are sending sensitive documents or high value contents you can request DHL to obtain a direct signature from the consignee or a representative at the delivery address. DHL will ensure your shipment is not re-directed, or delivered at an alternative address.

### No Signature Required

On receiver request, DHL is authorized to leave the shipment in a designated place without proof of delivery signature.

### Change of Billing

This applies when a customer requests a change of defined billing information on an already issued invoice, which will result in a reissuing of the invoice and, in case of an account change, crediting of the old account and debiting of the new.

### Neutral Delivery

This service allows for the delivery of any shipment, without its value being shared or exposed to the receiver. DHL will ensure any paperwork exposing the value of the goods is removed from the shipment prior to delivery.



For a full list of optional services, please visit [mydhl.express.dhl](https://mydhl.express.dhl).

# SERVICE OFFERING

---

 Connecting Your World
 

---

 Sustainability
 

---

 ► Service Offering
 

---

 How to Ship with DHL Express
 

---

 Digitalization
 

---

 Zones and Rates
 

---

 Export  
Services

 Import  
Services

 Domestic  
Services

 Enabling Your  
Growth

 Optional  
Services

**Surcharges**

 Customs  
Services

## SURCHARGES

[View charges](#)

In order to maintain a consistently high level of service, in specific circumstances DHL Express levies a surcharge for exceptional activities, ensuring that these surcharges are fair for all of our customers.

### Fuel Surcharge

The fuel surcharge for International Time Definite services will be based on the daily average spot prices for US Gulf Coast (USGC) kerosene-type jet fuel, as reported by the U.S. Department of Energy between 3rd week release of prior month to 3rd week release of actual month. For example, the daily average price for fuel from 18th April to 15th May is used to determine the applicable surcharge in June.

The fuel surcharge applies to transportation charges on all services and to the following surcharges (where applicable): Saturday Delivery, Saturday Pickup, Elevated Risk, Demand Surcharge, Emergency Situation, Remote Area Delivery, Remote Area Pickup, Dedicated Pickup, Dedicated Delivery, Residential Address, Overweight Piece, Oversize Piece and Non-Stackable Pallet.

DHL reserves the right to change the fuel surcharge index and table with or without notice. Both the amount and duration of the surcharge will be determined at DHL's sole discretion.

### Remote Area

This surcharge applies when a shipment is collected from or delivered to a location that is distant or difficult to serve.

### Overweight Piece

A fixed surcharge is applied to every piece, including a pallet that exceeds a scale or volumetric weight of 70kg.

### Oversize Piece

This fixed surcharge applies to every piece, including a pallet, with a single dimension in excess of 120cm. Does not apply to pieces already subject to Overweight Piece surcharge.

### Non-Stackable Pallet

This fixed surcharge is applied to every pallet within a shipment that cannot be stacked, either on request by the shipper, or because of its shape, content or packaging. This surcharge does not apply to pieces below 30kg.

### Demand Surcharge

One or more Demand Surcharges will apply to shipments during a period of high demand. A period of high demand is to be determined by DHL at its own discretion but may include a time of high demand for shipping services or a period with high operational cost. Details regarding the application of Demand Surcharges are set forth at [mydhl.express.dhl](http://mydhl.express.dhl) and will be subject to change upon prior notice. Demand Surcharges apply cumulatively if a shipment and/or individual pieces meet more than one of the specified criteria. Demand Surcharges apply in addition to the rates and any other applicable charges.

### Emergency Situation

A temporary surcharge, which allows us to cover operating cost increases due to an emergency situation out of DHL's control. Change in market dynamics and air capacity availability is reflected through regular price adjustments. The charge will be applied pro rata based on the chargeable weight (invoiced weight) of a shipment.

### Excepted Quantities

This fixed surcharge is applied when the handling and transportation of shipments involves substances and commodities that are in Excepted Quantities in compliance with IATA Dangerous Goods Regulations. Contractual agreement required.

### Dry Ice

A surcharge is applied when the transportation of shipments involves handling Dry Ice UN1845 as a freezing agent for non-dangerous goods such as diagnostic specimens. Contractual agreement required.

### Biological Substance UN3373

Shipments containing Biological Substances Category B (UN3373) or genetically modified organisms as per UN3245 are only accepted in combination with DHL Medical Express. Contractual agreement required.

# SERVICE OFFERING

[Connecting Your World](#)
[Sustainability](#)
[▶ Service Offering](#)
[How to Ship with DHL Express](#)
[Digitalization](#)
[Zones and Rates](#)
[Export Services](#)
[Import Services](#)
[Domestic Services](#)
[Enabling Your Growth](#)
[Optional Services](#)
[Surcharges](#)
[Customs Services](#)

## ➔ SURCHARGES

[View charges](#)

### Lithium Batteries Section II

#### Shipping Lithium Batteries *with* equipment

A service charge will be assessed on Lithium-Ion and Lithium-Metal batteries **with** equipment. Packaging must be compliant with the appropriate IATA Packing Instruction (PI): 966 for Lithium-Ion and 969 for Lithium-Metal, Section II respectively. Accepted from approved shippers only.

#### Shipping Lithium Batteries *in* equipment

Shipments containing Lithium-Ion or Lithium-Metal batteries **in** equipment are accepted only in compliance with the appropriate IATA Packing Instruction (PI): 967 for Lithium-Ion and 970 for Lithium-Metal, Section II respectively.

DHL **will not accept** any shipment that is known or suspected to contain defective or damaged batteries.

### Full Dangerous Goods

A surcharge is applied per shipment when the transportation of shipments involves handling substances and commodities classified as fully regulated in accordance with the IATA Dangerous Goods Regulations. Contractual agreement required.

### Consumer Goods ID8000

A surcharge is applied for shipments containing consumer goods such as perfumes, aftershaves, aerosols, nail varnish and

prescription medicines as covered by the IATA ID8000 section and packed in a form intended for retail sale and shipped to private individuals (B2C). Contractual agreement required.

### Address Correction

A fixed surcharge is applied per shipment when the destination address provided by the Shipper is incomplete, outdated or incorrect and DHL is subsequently unable to deliver the shipment. DHL searches and determines the correct address to complete the delivery.

### Data Entry

A surcharge applies if the shipping label is not correctly completed or has not been produced electronically according to DHL standards and therefore requires manual data entry by DHL.

### Security Charges

Additional surcharges may apply when shipping to or importing from a destination country where DHL is operating at elevated risk due to continuous state of war, civil unrest, or continuous threats from terrorism (**Elevated Risk**), or when shipping to or importing from a destination country that is subject to trade restrictions imposed by the UN Security Council or by national legislation such as the European Union or the US Office of Foreign Assets Control (OFAC) (**Restricted Destination**).



For a full list of surcharges, please visit [mydhl.express.dhl](https://mydhl.express.dhl).

# SERVICE OFFERING

---

[Connecting Your World](#)


---

[Sustainability](#)


---

[▶ Service Offering](#)


---

[How to Ship with DHL Express](#)


---

[Digitalization](#)


---

[Zones and Rates](#)


---

[Export Services](#)
[Import Services](#)
[Domestic Services](#)
[Enabling Your Growth](#)
[Optional Services](#)
[Surcharges](#)
[Customs Services](#)


---

## CUSTOMS SERVICES

[View charges](#)

Navigating the customs landscape is made easier by DHL's extensive knowledge and experience of both standard and non-routine customs-clearance processes. Get answers to many of your questions with our new online tool, [My Global Trade Services](#) tool, which will help you expand across borders – and concentrate on your core business.

### Non-Routine Entry

Applies when shipments are subject to non-routine clearance procedures, due to their value, weight and/or commodity as defined by destination Customs Authorities. May also apply in selected countries where DHL is legally obliged to outsource formal clearance entries to a licensed third party broker.

### Clearance Processing

Applies in selected countries where additional cost is incurred for importing shipments in alignment with government agency requirements.

### Permits and Licenses

To accelerate import of selected controlled commodities, such as medical devices, pharmaceuticals, computer monitors, laser CD players, cosmetics, eyeglasses, food and food products, DHL is required to file specific information in order to obtain the required import permits or licenses.

### Bonded Storage

Storage charges apply when the shipment cannot be released by Customs due to inaccurate or missing paperwork. Charges take effect three calendar days after the freight arrival date or broker notification, whichever is later. The charge applies to the duty and taxes payer.

### Multiline Entry

Charges apply when more than 5 lines are recorded on the customs clearance, for example with different commodities or different countries of manufacture.

### Release to Broker

On importer request, DHL will transfer the shipment and related customs documentation to the customer's nominated broker for clearance and last mile delivery.

### Broker Notification

On importer request, DHL will provide the necessary paperwork to the customer's designated broker to perform the import clearance and resume the delivery to the final destination once the clearance is completed. DHL is subsequently not responsible for the timeliness of the submission to customs or for the release of the shipment.

### Other Government Agency

At request, DHL will arrange the completion of Veterinary, Health or Phytosanitary controls at the First Point of Entry in a country or a Customs Union, typically required when importing animal products, plants, seeds, or pharmaceutical products.

### Bonded Transit

Bonded Transit applies to both export and import shipments whenever DHL is required to open, manage or report any form of transfer under bond.

### Temporary Import Export

On customer request, DHL facilitates the temporary import/export of goods by submitting required documents such as an ATA Carnet and adhering to required clearance procedures as specified by Customs.

### Preferential Origin

On shipper request, the preparation or provision of a Certificate of Origin/Proof of Preference or other similar forms by DHL to certify the goods in a particular export shipment have been produced, manufactured or processed in a particular country allowing preferential rates of duty to be claimed at destination and/or compliance with trade barriers. Common examples are EUR1 and ATR.

### Export Declaration

Applies in countries where an export declaration is required for shipments containing controlled commodities or exceeding a certain value threshold or weight. Where automated export systems are available to the public, shippers may avoid the charge by submitting the export declaration online. In case of IMP billed shipments DHL will submit the export declaration in order to accelerate the export at origin and pass the charge to the payer's account.

# HOW TO SHIP WITH DHL EXPRESS

Preparing Your Shipment

Packaging Your Shipment

Paying for Your Shipment

## PREPARING YOUR SHIPMENT: AS EASY AS 1-2-3

### 1 Shipment weight

- Please weigh and measure your shipment.
- If you are sending a large but lightweight shipment, where its volumetric (dimensional) weight exceeds its actual weight, the cost of the shipment is calculated on the space your consignment takes up on the aircraft. This is a standard IATA method. To calculate the volumetric weight of your shipment, simply multiply the length by height by width in centimeters, then divide the total sum by 5.000 for each piece in the shipment.
- Any piece in the shipment may be re-weighed and/or re-measured by DHL to confirm this calculation.

### 2 Documentation required: waybill

- All shipments sent with DHL Express need to have a fully completed DHL waybill or label securely attached to each piece. This will enable the successful movement of your shipment through the DHL network. Each waybill or label is individually numbered to allow you to track your shipment from collection through to delivery.
- Your shipment may also need to be accompanied by customs documentation, such as a commercial or proforma invoice, as well as additional paperwork depending on the contents and value of the shipment and the country you are sending to.

### 3 Documentation required: invoice

- A commercial or proforma invoice is required when sending non-document shipments to countries and territories outside your origin country or customs union. This is essentially a declaration containing all the details of a transaction and is used by customs authorities to assess if duties or taxes are payable.
- A commercial invoice is used when goods are part of a commercial transaction or intended for resale.
- A proforma invoice is used when sending goods of no commercial value (for example, when sending samples).



Connecting Your World
Sustainability
Service Offering
► How to Ship with DHL Express
Digitalization
Zones and Rates

# HOW TO SHIP WITH DHL EXPRESS

Preparing Your Shipment

Packaging Your Shipment

Paying for Your Shipment

## PREPARING YOUR SHIPMENT INVOICE

This invoice template covers the key data elements required for a successful customs clearance. To help us ensure the service we provide is efficient and high-quality, visit [mydhl.express.dhl](http://mydhl.express.dhl) for more guidance.

COMMERCIAL INVOICE								
<b>SENDER</b>				<b>GENERAL INFORMATION</b>				
Company Name: Contact Name: Building Name: Street Name & Number: Postcode: City/Country: Business/Private: Phone: Email: Tax ID/VAT Number: EORI Number:				Date: Waybill Number: Invoice Number: Shipment Reference Number: Receiver Reference Number:				
<b>RECEIVER</b>				<b>BILLED TO/IMPORTER OF RECORD (IOR) (if different from Receiver)</b>				
Company Name: Contact Name: Building Name: Street Name & Number: Postcode: City/Country: Business/Private: Phone: Email: Tax ID/VAT Number: EORI Number:				Company Name: Contact Name: Building Name: Street Name & Number: Postcode: City/Country: Business/Private: Phone: Email: Tax ID/VAT Number: EORI Number:				
<b>OTHER REMARKS</b>								
Please add any additional critical information or specific country clearance requirements that might be relevant e.g. bank details, special formalities etc.								
Line Number	Full Description of Goods	Commodity Code <small>(Full Import HS Code Preferred)</small>	Country of Origin	Qty	Unit Value & Currency	Sub-Total Value & Currency	Net Weight	Gross Weight
1								
2								
3								
						<b>Total Goods Value &amp; Currency</b>	<b>Total Net Weight</b>	<b>Total Gross Weight</b>
<b>Number of Invoice Line Items:</b>				<b>Insurance Cost:</b>				
<b>Total Units:</b>				<b>Freight Cost:</b>				
<b>Number of Pieces:</b>				<b>Other Costs:</b>				
<b>Reason for Export:</b>				<b>VALUE</b>				
<b>Type of Export:</b>				<b>(for Customs Purposes):</b>				
<b>INCOTERM:</b>				<b>Import Customs Duties – pre calculated</b>				
<b>INCOTERM Place:</b>				<b>Import Taxes (VAT/GST) – pre calculated</b>				
<b>Carrier:</b>				<b>TOTAL</b>				
<b>Ultimate Consignee:</b>				<b>(with Import Customs Duties/Taxes):</b>				
<b>Export License Number:</b>				<b>Terms of Payment:</b>				
<b>Import License Number:</b>				<b>Payer of GST/VAT:</b>				
				<b>Duty/Tax Billing Svc:</b>				
I/we certify the information on this invoice is true and correct and that the contents of this shipment are as stated above.								
Name: _____			Title: _____			Email: _____		
Date: _____			Signature: _____					



# HOW TO SHIP WITH DHL EXPRESS

## Preparing Your Shipment

## Packaging Your Shipment

## Paying for Your Shipment

## PACKAGING YOUR SHIPMENT

To ensure that your shipments travel safely and securely through the DHL Express global network, it is important that they are packaged and labeled correctly.

### Packaging guidelines

- If you are re-using envelopes or boxes, please ensure that old labels and markings are removed
- Securely fix a waybill to each piece in your shipment. The waybill can be thought of as the shipment's airline ticket and it will delay delivery if it becomes separated from your shipment
- The barcodes on the waybill are scanned at numerous points during your shipment's journey. Please ensure the barcode is flat and not covered by tape, shrinkwrap or strapping
- Place a waybill on the top or side of each piece in your shipment and please ensure it does not overlap the corners or edges of boxes
- Use adequate protective wrapping for fragile or delicate items and ensure they are packed as far away as possible from the corners of boxes
- To prevent injury to our employees, please pay special attention to the packaging of sharp items. There should not be any possibility of the contents piercing the packaging
- Any individual pieces over 70kg should be placed on a pallet. If you are sending a multi-piece shipment, it is not necessary to place the individual pieces on a pallet unless they exceed 70kg. For example, a shipment comprising four 25kg pieces does not have to be placed on a pallet

### DHL packaging

We offer a range of high-quality DHL-branded packaging items, suitable for shipping items of all shapes and sizes.

The items available include:

- Flyer bags
- Cardboard document envelopes
- Boxes in a range of sizes
- Tubes
- Bottle boxes

For more information please refer to the Packing Guide available on [mydhl.express.dhl](https://mydhl.express.dhl).

### Prohibited and Restricted Commodities

#### Prohibited Items

The following items will NOT be accepted for carriage by DHL.

This list includes items which are prohibited for carriage by any law, regulation or statute of any federal, state or local government of any country from, to or through which the items may be carried. For international carriage there may be additional prohibited items specified by the country of destination. DHL may at its sole discretion refuse to carry other items not listed below.

- Bullion (of any precious metal)
- Cannabis
- Cash (legal tender – bank notes, currency notes and coins)
- Complete firearms, ammunition, explosives/explosive devices including inert explosives and test pieces, air guns, replica and imitation firearms
- Human remains or ashes in any form
- Hunting (animal) trophies, animal parts such as ivory and shark's fin, animal remains or ashes, or animal by-products and derived products not intended for human consumption, prohibited for movement by the Convention on International Trade in Endangered Species of Wild Fauna and Flora (CITES) and/or local law
- Illegal goods, such as counterfeit goods and narcotics
- Live animals (including but not limited to mammals, reptiles, fish, invertebrates, amphibians, birds, insects, larvae and pupae)
- Loose lithium metal batteries under IATA PI968 section II
- Loose precious and semi-precious stones (cut or un-cut, polished or un-polished)



# HOW TO SHIP WITH DHL EXPRESS

## Preparing Your Shipment

### Restricted Items

The following items will NOT be accepted for carriage unless otherwise agreed to by DHL. To obtain such agreement a business case will need to be conducted by DHL and the items approved for carriage will be recorded in writing with the customer.

- Air guns, tasers, imitation or replica firearms, firearm parts and replica ammunition (includes rifle butts, trigger mechanisms, screws/bolts etc which are manufactured for the sole purpose of creating a functional firearm)
- Antiques and works of art with a shipment value in excess of €500.000
- Banderols/Tax stickers with a shipment value in excess of €500.000
- Cigarettes, cigars, tobacco products and electronic cigarettes with a shipment value in excess of €500.000
- Commemorative coins and medals with an individual value or total shipment value of €2.000 or more are restricted for carriage
- Dangerous/hazardous goods including but not limited to perfumes, aftershaves, aerosols, flammable substances, dry ice, biological substances, UN classified dangerous goods and any goods specified as such under International Air Transport Association regulations ("IATA"), the

## Packaging Your Shipment

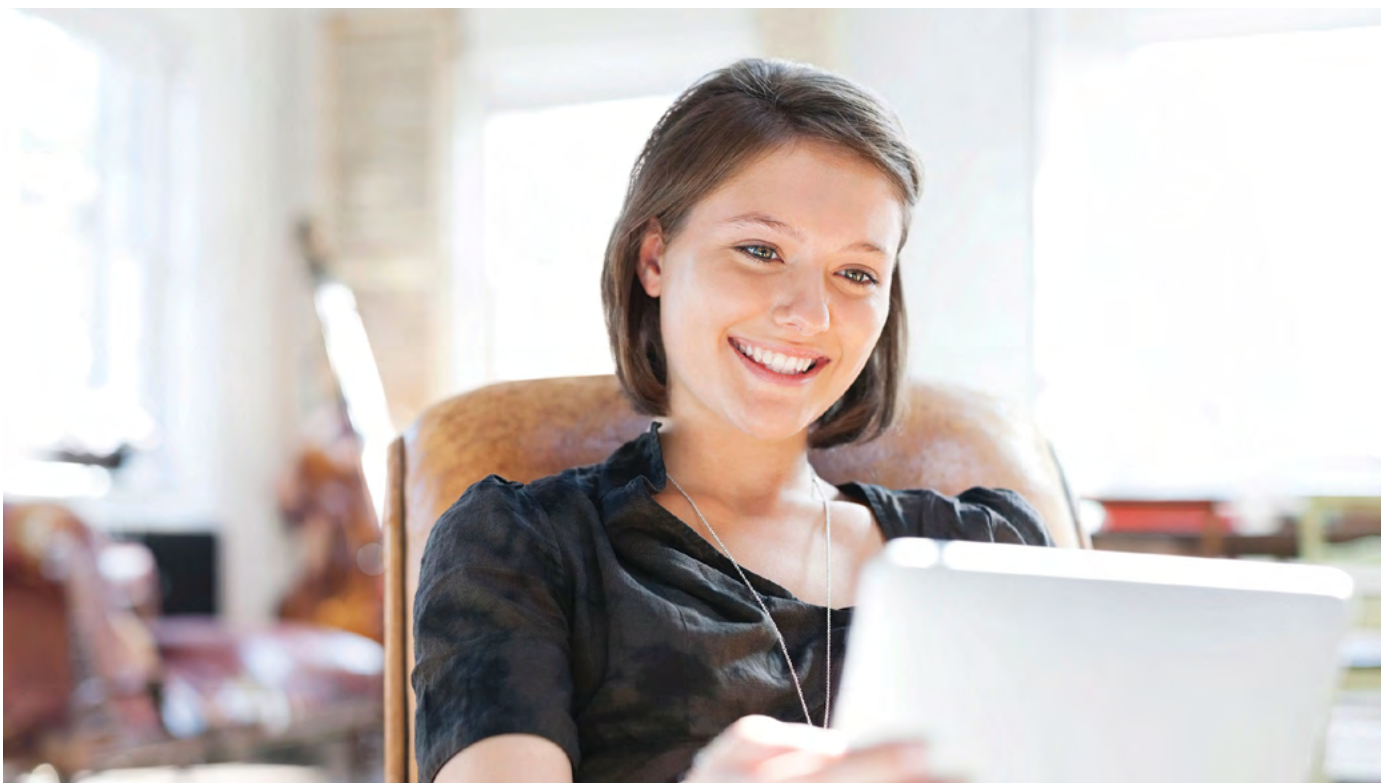
Agreement on Dangerous Goods by Road ("ADR") or International Maritime Dangerous Goods ("IMDG") regulations

- Financial and monetary commodities – examples include but are not limited to activated SIM cards for mobile phones, blank or activated credit or cash dispenser cards, blank checks, event tickets, lottery tickets, money or postal orders, pre-paid phone cards, tickets (blank stock), traveler's checks, vouchers/tokens, unused stamps etc. Applicable to all shipments valued in excess of €500.000
- Furs
- Jewelry and watches and with individual values in excess of €5.000. The shipment must not exceed €100.000

## Paying for Your Shipment

### PAYING FOR YOUR SHIPMENT

You can pay for DHL Express services either with cash, a credit card or by bank transfer. You can open an account with DHL Express to pay via bank transfer; and all account customers receive invoices on a pre-agreed basis. For more details, please get in touch with a Customer Service Advisor at your local DHL Express office or go to [mydhl.express.dhl](https://mydhl.express.dhl).





# DIGITALIZATION

- Connecting your World
- Sustainability
- Service Offering
- How to Ship with DHL Express
- Digitalization
- Zones and Rates

**Digitalization is one of the most important trends impacting logistics, and it is one of the key pillars of DHL Group’s Strategy 2025. Through digitalization we bring benefits for our customers, our operations and our own people.**

We invest continually in market-leading technologies to help our customers to manage and monitor shipments, create shipping labels, get quotes, schedule courier pickups, connect with us and more. Digitalizing our operations provides more transparency, allowing us to better anticipate and meet our customers’ needs.

## MYDHL+



MyDHL+ re-imagines the way the shipping business does business, by combining the tools and services our customers use most. With its mobile friendly and intuitive interface, customers can now import, export, schedule a pickup, track shipments and pay bills more quickly than ever – all in one visit, with one password and zero headaches. MyDHL+ makes it incredibly easy to navigate the complexities of international shipping.

[mydhl.express.dhl](https://mydhl.express.dhl)

## MY GLOBAL TRADE SERVICES



My Global Trade Services (MyGTS) is your trusted advisor for cross-border trade – taking the complexity out of customs. If you are wondering what the harmonized shipping (HS) codes are for your goods, what the estimated total cost of your shipment will be, what can help get your goods cleared, and what documentation may be required, find the answers to these questions and more on our online MyGTS portal.

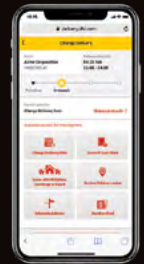
And the benefits for you? You can support clearing customs more quickly and more accurately, help avoid delays and unexpected customs or tax costs, and pre-plan your shipment journeys so that you understand potential prohibitions and restrictions.

[dhl.com/express/mygts](https://dhl.com/express/mygts)



## ON DEMAND DELIVERY

DHL’s On Demand Delivery tool keeps receivers informed of shipment progress, allowing them to reschedule, reroute, release or conveniently collect from a DHL Service Point. It is an innovative, easy-to-use, mobile-friendly service, especially for residential deliveries.



[ondemand.dhl.com](https://ondemand.dhl.com)

Designed to enhance the online shopper’s experience, the service is available globally, meaning consistent service standards and a harmonized user experience.



Scheduled delivery



Signature release/leave your signature



Alternative address



Collect from Service Point



Vacation hold



Leave with neighbor

## DHL EXPRESS COMMERCE

Take your website international with DHL Express Commerce. Offer your customers all the benefits of DHL Express at your checkout in real-time. Import, manage and ship their orders quickly and efficiently with no complicated development. Add the power of DHL Express to your e-commerce business quickly and easily, giving you the competitive edge. DHL Express Commerce integrates with the biggest e-commerce platforms, including: Magento, Shopify, WooCommerce, Amazon and eBay.

# DIGITALIZATION

---

 Connecting your World
 

---

 Sustainability
 

---

 Service Offering
 

---

 How to Ship with DHL Express
 

---

 ► Digitalization
 

---

 Zones and Rates
 

---

## DHL EXPRESS MOBILE APP



The DHL Express Mobile app lets you track your shipments and manage your deliveries all in one place. You can locate the nearest DHL Service Point for parcel drop off or collection, and quickly check shipping rates too – right on your smartphone. Advanced GPS location services and camera barcode scanning are also available. Download DHL Express Mobile today, on Android or iOS.



## DIGITAL ASSISTANT

Our Digital Assistant is a live chat helpdesk that offers a 24/7 service across multiple online channels and platforms, and in 41 languages, including Macedonian. It tracks your shipments, answers queries and directs you to FAQs.



[Chat with us now!](#)



## ROBOTICS

Driven by rapid technological advancements and increasing supply chain complexity, robotics solutions are entering the logistics environment, boosting productivity and driving zero-defect processes.

Robots are adopting more roles at DHL Express, assisting workers with the most repetitive and labor-intensive tasks and freeing them up to do higher-order, customer-facing activities. Examples include the use of articulated robotic arms for sorting inbound packages to last-mile delivery routes. We have four such robots in use globally, with this number set to double soon.

Our robots help get couriers out on the road faster – which means your parcels get delivered faster.

## DIGITAL TRUST

Logistics requires transferring data and content around the world and we embrace a responsibility to do this securely. Our standards led by our Binding Corporate Rules and by our [Data Privacy Policy](#) apply throughout the DHL Group and are approved by the Supervisory Authorities. We maintain a comprehensive [Information Security](#) and [Data Protection](#) approach based on ISO/IEC 27001:2013 and GDPR, to ensure a high standard when managing customer information assets and personal data. We aim to provide a rapid response to any security incident via our 24/7 Cyber Defence Centre (CDC) with global coverage and our global DPO community.

DHL Group acts as controller in respect of any personal data it receives from customers and holds to effectively provide transportation services and in regard to the delivery of any shipments or documents that it processes to perform its contractual obligations. DHL Group will act as a data controller when an individual is executing their rights under privacy legislations.

# ZONES AND RATES

Calculate the Price  
of Your Shipment

Optional  
Services

Surcharges

Customs  
Services

Service Capability  
and Rating Zones

Export  
Services

Import  
Services

Domestic  
Services

## CALCULATE THE PRICE OF YOUR SHIPMENT



Determine which zone your destination is in and whether yours is a document or non-document shipment.



Is your shipment international or domestic and how quickly do you want it to arrive?



Based on weight, zone and speed, confirm your base price for exports, imports and domestic services.



Add any optional services and check if any surcharges apply.

Base price + Optional services + Surcharges = Total price

## OPTIONAL SERVICES

[View explanation](#)

Optional services	Charging method	Charge
GoGreen Plus	Per shipment	Minimum 11 MKD per kg
Dedicated Pickup	Per shipment	1.830 MKD per kg with minimum of 27 MKD
Dedicated Delivery	Per shipment	2.480 MKD per kg with minimum of 28 MKD
Saturday Pickup	Per shipment	1.830 MKD
Saturday Delivery	Per shipment	2.440 MKD
Shipment Insurance	By shipment value	1.600 MKD or 1% of stated shipment value if higher
Extended Liability	Per shipment	305 MKD
Shipment Preparation	Per shipment	1.525 MKD
<b>Packaging Supplies</b>		
Plastic Flyer Stack	Per stack	1.220 MKD per stack (100 flyers)
Bulk Packaging	Per stack	Variable
<b>Duty Billing Services</b>		
Duty Tax Paid	% of fiscal charges	2% of fiscal charges with minimum of 976 MKD
Duty Tax Processing: Account Customers	% of fiscal charges	2% of fiscal charges with minimum of 732 MKD
Duty Tax Processing: Non-Account Customers	% of fiscal charges	2% of fiscal charges with minimum of 732 MKD
Verbal Notification	Per shipment	310 MKD
Hold for Collection	No charge	No charge
Residential Address	Per shipment	305 MKD
Direct Signature	Per shipment	310 MKD
No Signature Required	No charge	No charge
Change of Billing	Per invoice	732 MKD
Neutral Delivery	Per shipment	310 MKD

For a full list of optional services, please visit [mydhl.express.dhl](https://mydhl.express.dhl).

# ZONES AND RATES

[Calculate the Price of Your Shipment](#)
[Optional Services](#)
[Surcharges](#)
[Customs Services](#)
[Service Capability and Rating Zones](#)
[Export Services](#)
[Import Services](#)
[Domestic Services](#)

## SURCHARGES

[View explanation](#)

Surcharges	Charging method	Charge
Fuel Surcharge	Per shipment	Percentage of transportation and additional charges, as per index; details <a href="#">here</a>
Remote Area Delivery	Per shipment	1.281 MKD per kg 31 MKD minimum per shipment
Remote Area Pickup	Per shipment	1.281 MKD per kg 31 MKD minimum per shipment
<b>Additional Handling</b>		
Overweight Piece	Per piece	5.795 MKD
Oversize Piece	Per piece	3.100 MKD
Non-Stackable Pallet	Per piece	16.775 MKD
Demand Surcharge	Variable by lane and weight	Variable by lane and weight
Emergency Situation	Variable by lane and weight	Variable by lane and weight
<b>Dangerous Goods</b>		
Excepted Quantities	Per shipment	610 MKD
Dry Ice (UN1845)	Per shipment	732 MKD
Lithium Batteries <b>with</b> equipment		
Lithium Ion PI966, Section II	Per shipment	310 MKD
Lithium Metal PI969, Section II	Per shipment	310 MKD
Lithium Batteries <b>in</b> equipment	No charge	No charge
Full Dangerous Goods	Per shipment	6.100 MKD
Consumer Goods ID8000	Per shipment	1.525 MKD
Address Correction	Per shipment	671 MKD
Data Entry	Per shipment	610 MKD
<b>Security Charges</b>		
Elevated Risk	Per shipment	1.830 MKD
Restricted Destination	Per shipment	1.860 MKD

For a full list of surcharges, please visit [mydhl.express.dhl](https://mydhl.express.dhl).

# ZONES AND RATES

[Calculate the Price of Your Shipment](#)
[Optional Services](#)
[Surcharges](#)
[Customs Services](#)
[Service Capability and Rating Zones](#)
[Export Services](#)
[Import Services](#)
[Domestic Services](#)

## CUSTOMS SERVICES

[View explanation](#)

Customs services	Charging method	Charge
Non-Routine Entry	Per shipment	2.745 MKD
Clearance Processing	Per shipment	620 MKD
Permits and Licenses	Per shipment	2.745 MKD plus cost of certificate
Bonded Storage	Per shipment, per day after three calendar days	671 MKD per shipment and 13 MKD per kg (both per day after three calendar days)
Multiline Entry	Rate per line, after five lines	310 MKD
Release to Broker	Per shipment	2.745 MKD
Broker Notification	Per shipment	732 MKD
Other Government Agency	Per shipment	2.745 MKD plus cost of certificate
Bonded Transit	Per shipment	2.745 MKD
Temporary Import Export	Per shipment	2.745 MKD
Preferential Origin	Per shipment	610 MKD
Export Declaration	Per shipment	620 MKD for shipment values exceeding 62.000 MKD declared value

For a full list of customs services, please visit [mydhl.express.dhl](https://mydhl.express.dhl).



# ZONES AND RATES

- Connecting Your World
- Sustainability
- Service Offering
- How to Ship with DHL Express
- Digitalization
- ▶ **Zones and Rates**

Calculate the Price of Your Shipment    Optional Services    Surcharges    Customs Services    Service Capability and Rating Zones    Export Services    Import Services    Domestic Services

## SERVICE CAPABILITY AND RATING ZONES

Country/Territory	Zone	DHL Express Worldwide	DHL Express 12:00	DHL Express 9:00	Imports
Afghanistan	6	✓			✓
Albania	1	✓	✓	✓	✓
Algeria	6	✓			✓
American Samoa	6	✓	✓		✓
Andorra	3	✓	✓	✓	✓
Angola	6	✓	✓	✓	✓
Anguilla	6	✓			✓
Antigua	6	✓			✓
Argentina	6	✓	✓		✓
Armenia	6	✓	✓		✓
Aruba	6	✓			✓
Australia	6	✓	✓	✓	✓
Austria	2	✓	✓	✓	✓
Azerbaijan	6	✓	✓		✓
Bahamas	6	✓	✓	✓	✓
Bahrain	6	✓	✓	doc	✓
Bangladesh	6	✓			✓
Barbados	6	✓	✓	✓	✓
Belarus	6	✓	✓		✓
Belgium	2	✓	✓	✓	✓
Belize	6	✓	✓		✓
Benin	6	✓			✓
Bermuda	6	✓	✓		✓
Bhutan	6	✓			✓
Bolivia	6	✓	✓	✓	✓
Bonaire	6	✓	doc		✓
Bosnia and Herzegovina	1	✓			✓
Botswana	6	✓	doc	doc	✓
Brazil	6	✓	✓	✓	✓
Brunei	6	✓			✓
Bulgaria	1	✓	✓	✓	✓
Burkina Faso	6	✓	doc	doc	✓
Burundi	6	✓			✓
Cambodia	6	✓	✓		✓
Cameroon	6	✓	✓		✓
Canada	4	✓	✓	✓	✓
Canary Islands. The	6	✓			✓
Cape Verde	6	✓			✓
Cayman Islands	6	✓	doc	doc	✓
Central African Republic	6	✓			✓
Chad	6	✓			✓
Chile	6	✓	✓		✓
China. People's Republic	5	✓	doc		✓
Colombia	6	✓	✓	✓	✓
Comoros	6	✓			✓
Congo	6	✓			✓
Congo. Democratic Rep. of	6	✓	doc		✓
Cook Islands	6	✓			✓
Costa Rica	6	✓	✓		✓
Cote d'Ivoire	6	✓	doc		✓
Croatia	1	✓	✓	✓	✓
Cuba	6	✓			✓
Curacao	6	✓	✓	doc	✓
Cyprus	3	✓	doc	doc	✓
Czech Republic. The	2	✓	✓	✓	✓
Denmark	3	✓	✓	✓	✓
Djibouti	6	✓			✓
Dominica	6	✓	doc		✓
Dominican Republic	6	✓	✓	doc	✓

Country/Territory	Zone	DHL Express Worldwide	DHL Express 12:00	DHL Express 9:00	Imports
Ecuador	6	✓	doc		✓
Egypt	6	✓	✓	doc	✓
El Salvador	6	✓	✓	✓	✓
Eritrea	6	✓			✓
Estonia	3	✓	✓		✓
Eswatini	6	✓	✓	doc	✓
Ethiopia	6	✓			✓
Falkland Islands	6	✓			✓
Faroe Islands	6	✓			✓
Fiji	6	✓			✓
Finland	3	✓	✓		✓
France	2	✓	✓	✓	✓
French Guiana	6	✓	doc		✓
Gabon	6	✓	doc		✓
Gambia	6	✓			✓
Georgia	6	✓	✓		✓
Germany	2	✓	✓	✓	✓
Ghana	6	✓	✓	doc	✓
Gibraltar	3	✓	✓	✓	✓
Greece	1	✓	✓		✓
Greenland	6	✓			✓
Grenada	6	✓			✓
Guadeloupe	6	✓	doc		✓
Guam	6	✓	✓		✓
Guatemala	6	✓	✓		✓
Guernsey	3	✓	✓	✓	✓
Guinea Republic	6	✓	doc		✓
Guinea-Bissau	6	✓			✓
Guinea-Equatorial	6	✓			✓
Guyana (British)	6	✓	doc		✓
Haiti	6	✓	✓		✓
Honduras	6	✓	✓	doc	✓
Hong Kong SAR China	5	✓	✓	✓	✓
Hungary	2	✓	✓		✓
Iceland	6	✓	✓		✓
India	5	✓	doc		✓
Indonesia	6	✓			✓
Iran. Islamic Rep. of	6	✓			✓
Iraq	6	✓			✓
Ireland. Rep. of	3	✓	✓	✓	✓
Israel	3	✓			✓
Italy	2	✓	✓	✓	✓
Jamaica	6	✓	✓		✓
Japan	5	✓	✓		✓
Jersey	3	✓	✓	✓	✓
Jordan	6	✓	✓	✓	✓
Kazakhstan	6	✓	✓		✓
Kenya	6	✓	✓	doc	✓
Kiribati	6	✓			✓
Korea. D.P.R. of (North)	6	✓			✓
Korea. Rep. of (South)	5	✓	✓		✓
Kosovo	1	✓			✓
Kuwait	6	✓	✓	✓	✓
Kyrgyzstan	6	✓	✓		✓
Lao P.D.R.	6	✓	✓	doc	✓
Latvia	3	✓	✓	doc	✓
Lebanon	6	✓	✓	doc	✓
Lesotho	6	✓	✓	doc	✓
Liberia	6	✓			✓

doc = document contents only    ✓ = document and non-document contents

*Continues overleaf*

For transit times and the availability of DHL Express 12:00 and DHL Express 9:00 for your origin and destination address, please refer to the DHL Capability Tool at [dct.dhl.com](http://dct.dhl.com). Pieces with a single base length up to 300cm are accepted. Additional surcharges may apply.

# ZONES AND RATES

- Connecting Your World
- Sustainability
- Service Offering
- How to Ship with DHL Express
- Digitalization
- ▶ Zones and Rates

- Calculate the Price of Your Shipment
- Optional Services
- Surcharges
- Customs Services
- Service Capability and Rating Zones
- Export Services
- Import Services
- Domestic Services

## ➔ SERVICE CAPABILITY AND RATING ZONES

Country/Territory	Zone	DHL Express Worldwide	DHL Express 12:00	DHL Express 9:00	Imports
Libya	6	✓			✓
Liechtenstein	2	✓	✓	✓	✓
Lithuania	3	✓	✓		✓
Luxembourg	2	✓	✓	✓	✓
Macau SAR China	6	✓			✓
Madagascar	6	✓	✓		✓
Malawi	6	✓			✓
Malaysia	5	✓	✓	✓	✓
Maldives	6	✓			✓
Mali	6	✓			✓
Malta	3	✓	doc	doc	✓
Marshall Islands	6	✓	✓		✓
Martinique	6	✓	✓		✓
Mauritania	6	✓			✓
Mauritius	6	✓	✓	doc	✓
Mayotte	6	✓			✓
Mexico	4	✓	✓		✓
Micronesia. Fed. States of	6	✓			✓
Moldova. Rep. of	6	✓	✓		✓
Monaco	2	✓	✓	✓	✓
Mongolia	6	✓			✓
Montenegro. Rep. of	1	✓	doc		✓
Montserrat	6	✓			✓
Morocco	6	✓	✓	✓	✓
Mozambique	6	✓	doc	doc	✓
Myanmar	6	✓	doc		✓
Namibia	6	✓	doc	doc	✓
Nauru. Rep. of	6	✓			✓
Nepal	6	✓			✓
Netherlands. The	2	✓	✓	✓	✓
Nevis	6	✓	doc		✓
New Caledonia	6	✓			✓
New Zealand	6	✓	✓	✓	✓
Nicaragua	6	✓	✓	✓	✓
Niger	6	✓			✓
Nigeria	6	✓	✓		✓
Niue	6	✓			✓
Northern Mariana Islands	6	✓			✓
Norway	3	✓	✓		✓
Oman	6	✓	✓		✓
Pakistan	6	✓	✓	doc	✓
Palau	6	✓			✓
Panama	6	✓	✓		✓
Papua New Guinea	6	✓			✓
Paraguay	6	✓	✓	✓	✓
Peru	6	✓	✓		✓
Philippines. The	6	✓	✓	✓	✓
Poland	2	✓	✓	✓	✓
Portugal	3	✓	✓	✓	✓
Puerto Rico	6	✓	✓	✓	✓
Qatar	6	✓	✓	✓	✓
Reunion. Island of	6	✓	✓		✓
Romania	2	✓	✓		✓
Russian Federation. The	6	✓	✓	doc	✓
Rwanda	6	✓			✓
Samoa	6	✓			✓
San Marino	2	✓			✓
Sao Tome & Principe	6	✓			✓

Country/Territory	Zone	DHL Express Worldwide	DHL Express 12:00	DHL Express 9:00	Imports
Saudi Arabia	5	✓		✓	✓
Senegal	6	✓	✓	doc	✓
Serbia. Rep. of	1	✓			✓
Seychelles	6	✓			✓
Sierra Leone	6	✓	doc		✓
Singapore	5	✓	✓	✓	✓
Slovakia	2	✓	✓	✓	✓
Slovenia	1	✓	✓	doc	✓
Solomon Islands	6	✓			✓
Somalia	6	✓			✓
Somaliland. Rep. (N. Somalia)	6	✓			✓
South Africa	6	✓	✓	doc	✓
South Sudan	6	✓			✓
Spain	3	✓	✓	✓	✓
Sri Lanka	6	✓	✓	✓	✓
St. Barthelemy	6	✓	doc		✓
St. Eustatius	6	✓	✓		✓
St. Helena	6	✓			✓
St. Kitts	6	✓	doc		✓
St. Lucia	6	✓	doc		✓
St. Maarten	6	✓	✓	✓	✓
St. Vincent	6	✓			✓
Sudan	6	✓			✓
Suriname	6	✓			✓
Sweden	3	✓	✓	✓	✓
Switzerland	2	✓	✓	✓	✓
Syria	6	✓			✓
Tahiti	6	✓			✓
Taiwan, China	5	✓	✓	✓	✓
Tajikistan	6	✓			✓
Tanzania	6	✓	doc	doc	✓
Thailand	6	✓	✓	✓	✓
Timor-Leste	6	✓			✓
Togo	6	✓			✓
Tonga	6	✓			✓
Trinidad and Tobago	6	✓	✓	✓	✓
Tunisia	6	✓			✓
Türkiye	3	✓	✓		✓
Turkmenistan	6	✓	✓		✓
Turks and Caicos Islands	6	✓	doc		✓
Tuvalu	6	✓			✓
Uganda	6	✓	doc	doc	✓
Ukraine	3	✓	✓	✓	✓
United Arab Emirates	5	✓	✓	✓	✓
United Kingdom	2	✓	✓	✓	✓
United States of America	4	✓	✓	10:30	✓
Uruguay	6	✓	✓	✓	✓
Uzbekistan	6	✓	✓		✓
Vanuatu	6	✓			✓
Vatican City	2	✓	✓		✓
Venezuela	6	✓			✓
Vietnam	6	✓	doc	doc	✓
Virgin Islands (British)	6	✓	✓	✓	✓
Virgin Islands (US)	6	✓			✓
Yemen. Rep. of	6	✓			✓
Zambia	6	✓	✓	doc	✓
Zimbabwe	6	✓	doc		✓

doc = document contents only ✓ = document and non-document contents

For transit times and the availability of DHL Express 12:00 and DHL Express 9:00 for your origin and destination address, please refer to the DHL Capability Tool at [dct.dhl.com](https://dct.dhl.com). Pieces with a single base length up to 300cm are accepted. Additional surcharges may apply.

# ZONES AND RATES

Calculate the Price  
of Your Shipment

Optional  
Services

Surcharges

Customs  
Services

Service Capability  
and Rating Zones

Export  
Services

Import  
Services

Domestic  
Services

## Export rates by zone and product

### DHL EXPRESS WORLDWIDE

Weight in kg	Zone 1	Zone 2	Zone 3	Zone 4	Zone 5	Zone 6
Envelopes up to 0,3kg						
0,3	2.700	3.020	3.272	3.445	3.959	4.514
Documents only up to 2kg						
0,5	3.035	3.327	3.675	4.041	4.466	4.993
1	3.602	3.914	4.396	4.891	5.348	6.175
1,5	4.169	4.481	5.104	5.743	6.230	7.357
2	4.736	5.048	5.812	6.595	7.112	8.539
Documents from 2,5kg and non-documents from 0,5kg						
0,5	4.219	4.431	4.623	4.809	5.384	6.123
1	4.660	5.014	5.350	5.688	6.301	7.172
1,5	5.101	5.596	6.076	6.559	7.210	8.213
2	5.542	6.178	6.802	7.430	8.119	9.254
2,5	5.983	6.760	7.528	8.301	9.028	10.295
3	6.344	7.128	8.026	8.944	9.761	11.173
3,5	6.705	7.496	8.524	9.587	10.494	12.051
4	7.066	7.864	9.022	10.230	11.227	12.929
4,5	7.427	8.232	9.520	10.873	11.960	13.807
5	7.788	8.600	10.018	11.516	12.693	14.685
5,5	8.076	8.891	10.371	12.010	13.205	15.401
6	8.364	9.182	10.724	12.504	13.717	16.117
6,5	8.652	9.473	11.077	12.998	14.229	16.833
7	8.940	9.764	11.430	13.492	14.741	17.549
7,5	9.228	10.055	11.783	13.986	15.253	18.265
8	9.516	10.346	12.136	14.480	15.765	18.981
8,5	9.804	10.637	12.489	14.974	16.277	19.697
9	10.092	10.928	12.842	15.468	16.789	20.413
9,5	10.380	11.219	13.195	15.962	17.301	21.129
10	10.668	11.510	13.548	16.456	17.813	21.845
11	11.160	12.024	14.192	17.100	18.653	22.847
12	11.652	12.538	14.836	17.744	19.493	23.849
13	12.144	13.052	15.480	18.388	20.333	24.851
14	12.636	13.566	16.124	19.032	21.173	25.853
15	13.128	14.080	16.768	19.676	22.013	26.855
16	13.620	14.594	17.412	20.320	22.853	27.857
17	14.112	15.108	18.056	20.964	23.693	28.859
18	14.604	15.622	18.700	21.608	24.533	29.861

Continues overleaf



# ZONES AND RATES

Calculate the Price  
of Your Shipment

Optional  
Services

Surcharges

Customs  
Services

Service Capability  
and Rating Zones

Export  
Services

Import  
Services

Domestic  
Services

## Export rates by zone and product

### ➔ DHL EXPRESS WORLDWIDE

Weight in kg	Zone 1	Zone 2	Zone 3	Zone 4	Zone 5	Zone 6
19	15.096	16.136	19.344	22.252	25.373	30.863
20	15.588	16.650	19.988	22.896	26.213	31.865
21	16.168	17.268	20.724	23.926	27.297	33.411
22	16.748	17.886	21.460	24.956	28.381	34.957
23	17.328	18.504	22.196	25.986	29.465	36.503
24	17.908	19.122	22.932	27.016	30.549	38.049
25	18.488	19.740	23.668	28.046	31.633	39.595
26	19.068	20.358	24.404	29.076	32.717	41.141
27	19.648	20.976	25.140	30.106	33.801	42.687
28	20.228	21.594	25.876	31.136	34.885	44.233
29	20.808	22.212	26.612	32.166	35.969	45.779
30	21.388	22.830	27.348	33.196	37.053	47.325
40	27.288	29.100	34.868	43.596	48.113	61.825
50	33.188	35.370	42.388	53.996	59.173	76.325
60	39.088	41.640	49.908	64.396	70.233	90.825
70	44.988	47.910	57.428	74.796	81.293	105.325
For each additional 0,5kg						
Above 10	246	257	322	322	420	501
Above 20	290	309	368	515	542	773
For each additional 1kg						
30,1 - 70,0	590	627	752	1.040	1.106	1.450
70,1 - 300,0	611	648	774	1.080	1.154	1.658
300,1 - 3.000*	682	714	852	1.213	1.270	1.838

**DHL Express 12:00** – Guaranteed delivery before 12:00 on the next possible working day to over 151 countries worldwide.

Add 310 MKD to the DHL Express Worldwide prices.

**DHL Express 9:00 (10:30 to the USA)** – Guaranteed delivery before 9:00 on the next possible working day to over 86 countries worldwide. Add 2.135 MKD (620 MKD to the DHL Express 10:30 for USA) to the DHL Express Worldwide prices.

Rates are rounded up to the nearest 0,5kg for shipments up to 30kg, and to the nearest 1kg thereafter. Each piece weight is rounded up to the nearest 0,5kg.

Rates are in MKD and exclude customs duties, taxes, clearance-related charges, VAT and all surcharges. Terms and conditions apply – see [mydhl.express.dhl](https://mydhl.express.dhl) for details.

\*DHL Express does not accept shipments exceeding 3.000kg, or containing pieces exceeding 1.000kg or 300cm in length, and/or not meeting DHL standards for packing. Refer to our Packing Guide on [mydhl.express.dhl](https://mydhl.express.dhl). These network restrictions are subject to change with 30 days' notice.

# ZONES AND RATES

Calculate the Price  
of Your Shipment

Optional  
Services

Surcharges

Customs  
Services

Service Capability  
and Rating Zones

Export  
Services

Import  
Services

Domestic  
Services

## Import rates by zone and product

### DHL EXPRESS WORLDWIDE IMPORT

Weight in kg	Zone 1	Zone 2	Zone 3	Zone 4	Zone 5	Zone 6
Documents only up to 2kg						
0,5	3.502	3.806	4.194	4.536	5.068	5.671
1	4.333	4.436	5.025	5.505	6.055	6.711
1,5	4.821	5.060	5.856	6.474	7.042	7.751
2	5.309	5.684	6.687	7.443	8.029	8.791
Documents from 2,5kg and non-documents from 0,5kg						
0,5	4.707	4.912	5.066	5.189	5.870	6.671
1	5.212	5.559	5.926	6.205	6.836	7.752
1,5	5.717	6.206	6.786	7.212	7.802	8.833
2	6.222	6.853	7.646	8.219	8.768	9.914
2,5	6.727	7.500	8.502	9.221	9.732	10.995
3	7.157	7.930	9.075	9.939	10.473	12.005
3,5	7.587	8.360	9.648	10.657	11.214	13.015
4	8.017	8.790	10.221	11.375	11.955	14.025
4,5	8.447	9.220	10.794	12.093	12.696	15.035
5	8.877	9.650	11.367	12.811	13.437	16.045
5,5	9.180	9.953	11.740	13.335	14.052	16.796
6	9.483	10.256	12.113	13.859	14.667	17.547
6,5	9.786	10.559	12.486	14.383	15.282	18.298
7	10.089	10.862	12.859	14.907	15.897	19.049
7,5	10.392	11.165	13.232	15.431	16.512	19.800
8	10.695	11.468	13.605	15.955	17.127	20.551
8,5	10.998	11.771	13.978	16.479	17.742	21.302
9	11.301	12.074	14.351	17.003	18.357	22.053
9,5	11.604	12.377	14.724	17.527	18.972	22.804
10	11.907	12.680	15.097	18.051	19.587	23.555
11	12.413	13.204	15.789	18.767	20.495	24.731
12	12.919	13.728	16.481	19.483	21.403	25.907
13	13.425	14.252	17.173	20.199	22.311	27.083
14	13.931	14.776	17.865	20.915	23.219	28.259
15	14.437	15.300	18.557	21.631	24.127	29.435
16	14.943	15.824	19.249	22.347	25.035	30.611
17	15.449	16.348	19.941	23.063	25.943	31.787
18	15.955	16.872	20.633	23.779	26.851	32.963

Continues overleaf

# ZONES AND RATES

Calculate the Price  
of Your Shipment

Optional  
Services

Surcharges

Customs  
Services

Service Capability  
and Rating Zones

Export  
Services

Import  
Services

Domestic  
Services

## Import rates by zone and product

### ➔ DHL EXPRESS WORLDWIDE IMPORT

Weight in kg	Zone 1	Zone 2	Zone 3	Zone 4	Zone 5	Zone 6
19	16.461	17.396	21.325	24.495	27.759	34.139
20	16.967	17.920	22.017	25.211	28.667	35.315
21	17.549	18.516	22.747	26.255	29.809	37.001
22	18.131	19.112	23.477	27.299	30.951	38.687
23	18.713	19.708	24.207	28.343	32.093	40.373
24	19.295	20.304	24.937	29.387	33.235	42.059
25	19.877	20.900	25.667	30.431	34.377	43.745
26	20.459	21.496	26.397	31.475	35.519	45.431
27	21.041	22.092	27.127	32.519	36.661	47.117
28	21.623	22.688	27.857	33.563	37.803	48.803
29	22.205	23.284	28.587	34.607	38.945	50.489
30	22.787	23.880	29.317	35.651	40.087	52.175
40	29.537	30.930	37.667	47.641	52.537	69.985
50	36.287	37.980	46.017	59.631	64.987	87.795
60	43.037	45.030	54.367	71.621	77.437	105.605
70	49.787	52.080	62.717	83.611	89.887	123.415
For each additional 0,5kg						
Above 10	253	262	346	358	454	588
Above 20	291	298	365	522	571	843
For each additional 1kg						
30,1 - 70,0	675	705	835	1.199	1.245	1.781
70,1 - 300,0	696	739	859	1.256	1.319	1.831
300,1 - 3.000*	773	813	944	1.381	1.450	2.033

Rates are rounded up to the nearest 0,5kg for shipments up to 30kg, and to the nearest 1kg thereafter. Each piece weight is rounded up to the nearest 0,5kg.

Rates are in MKD and exclude customs duties, taxes, clearance-related charges, VAT and all surcharges. Terms and conditions apply – see [mydhl.express.dhl](https://mydhl.express.dhl) for details.

\*DHL Express does not accept shipments exceeding 3.000kg, or containing pieces exceeding 1.000kg or 300cm in length, and/or not meeting DHL standards for packing. Refer to our Packing Guide on [mydhl.express.dhl](https://mydhl.express.dhl). These network restrictions are subject to change with 30 days' notice.

# ZONES AND RATES

[Calculate the Price of Your Shipment](#)
[Optional Services](#)
[Surcharges](#)
[Customs Services](#)
[Service Capability and Rating Zones](#)
[Export Services](#)
[Import Services](#)
[Domestic Services](#)

## DOMESTIC SERVICES

DHL offers door-to-door delivery of parcels and documents to all major Macedonian cities. We have offices in Bitola, Veles, Gevgelija, Gostivar, Kavadarci, Kicevo, Kumanovo, Ohrid, Prilep, Skopje, Strumica, Tetovo and Stip, which also cover cities in a 30km radius from city centers (for instance Kocani, Negotino and Struga).

### DHL SameDay Domestic

Weight in kg	Price (MKD)
1,00	732
2,00	860
3,00	967
4,00	1.074
5,00	1.181
+1kg	161

### DHL SameDay Domestic

With DHL Same Day Delivery, the shipment may be collected before 12:00 and delivered before 18:00 on the same day. If you are part of the hi-tech or health industry, technical testing industry, financial or some other fast-paced industry, it is likely that you need to send documents that require fast delivery. DHL Same Day Delivery lets you improve your customer care and post-sales services. It gives you more time when the business world you are part of imposes ever-tightening deadlines. This service is currently offered only within the same city.

### DHL Express 18:00 Domestic

Our popular delivery before 18:00 offers a secure and efficient solution for door to door shipment delivery of your urgent parcels or documents to all major Macedonian cities, overnight or before the end of the next business day.

### DHL Express 9:00 Domestic

When your documents or parcels need to be delivered to major Macedonian cities before 9:00, our Domestic Delivery before 9:00 is the solution you need.

**Add 305.00 MKD + VAT to the price for Domestic Express 18:00.**

### Domestic Express 18:00

Weight in kg	Price (MKD)
0,1 - 5,0	289
5,1 - 6,0	347
6,1 - 7,0	405
7,1 - 8,0	463
8,1 - 9,0	521
9,1 - 10,0	579
10,1 - 11,0	596
11,1 - 12,0	613
12,1 - 13,0	630
13,1 - 14,0	647
14,1 - 15,0	664
15,1 - 16,0	681
16,1 - 17,0	698
17,1 - 18,0	715
18,1 - 19,0	732
19,1 - 20,0	749
20,1 - 21,0	761
21,1 - 22,0	773
22,1 - 23,0	785
23,1 - 24,0	797
24,1 - 25,0	809
25,1 - 26,0	821
26,1 - 27,0	833
27,1 - 28,0	845
28,1 - 29,0	857
29,1 - 30,0	869

### DHL Express 12:00 Domestic

When your documents or parcels need to be delivered to major Macedonian cities before 12:00, our Domestic Delivery before 12:00 is the solution you need.

**Add 75.00 MKD + VAT to the price for Domestic Express 18:00.**

Rates are rounded up to the nearest 1kg. Each piece weight is rounded up to the nearest 0,5kg.

All prices are in Macedonian denars and exclude VAT calculated (18% VAT rate is applied). The maximum shipment weight is 30kg. In accordance with DHL Terms and Conditions. For more information on service availability, please contact our Customer Service on tel. 02/15 333 (Option 1).

# SERVICE POINTS

<b>Skopje</b> Ul. 32 br. 5 Nas. Ilinden 1041 Skopje Phone: +389-2-2581581 Working hours: Monday – Friday: 08:00 – 17:00 Saturday – Sunday: Closed	<b>Gostivar</b> Brakja Blazevski. 114 1230 Gostivar Phone: +389-42-211646 Mobile: +389-78-392327 Working hours: Monday – Saturday: 09:00 – 17:00 Sunday: Closed	<b>Ohrid</b> Bul. Turisticka br.47V Ohrid 6000 Phone: +389-46-254455 Mobile: +389-72-204716 Working hours: Monday – Friday: 08:00 – 16:00 Saturday – Sunday: Closed	<b>Tetovo</b> Ul. Marshal Tito 138 1200 Tetovo Phone: +389 44 458 811 Mobile: +389 71 223 003 Working hours: Monday – Friday: 08:00 – 16:00 Saturday – Sunday: Closed
<b>Service Point Skopje</b> Bul. Ilinden bb opposite the Government of RM Phone: +389-2-3112753 Working hours: Monday – Friday: 8:00 – 12:00 12:30 – 16:00 Saturday – Sunday: Closed	<b>Kavadarci</b> Industrijska 15 (carinski terminal) 1430 Kavadarci Phone: +389-43-415742 Mobile: +389-71-304500 Working hours: Monday – Friday: 08:00 – 16:00 Saturday – Sunday: Closed	<b>Veles</b> Rashatnski pat b.b. Phone: +389-43-234571 Mobile: +389-71-274414 Working hours: Monday – Friday: 08:00 – 15:00 Saturday – Sunday: Closed	<b>Bitola</b> Shirok sokak 67/3 7000 Bitola Phone: +389-47-612046 Mobile: +389-78-413766 Working hours: Monday – Friday: 09:00 – 17:00 Saturday – Sunday: Closed
<b>Kichevo</b> Ul. Boris Kidrich br. 42A 6250 Kichevo Phone: +389-45-222 699 Mobile: +389-75-347307 Working hours: Monday – Friday: 08:30 – 16:00 Saturday – Sunday: Closed	<b>Shtip</b> Marshal Tito 37 Lokal 42 2000 Shtip Phone: +389-32-390860 Mobile: +389-70-264463 Working hours: Monday – Friday: 08:00 – 16:00 Saturday – Sunday: Closed	<b>Gevgelija</b> Ul. Mile Pecanov br. 11 1480 Gevgelija Mobile: +389-70-218345 Working hours: Monday – Friday: 08:00 – 16:00 Saturday – Sunday: Closed	<b>Kumanovo</b> Oktomvriska Revolucija 19a 1300 Kumanovo Phone: +389-76-428840 Working hours: Monday – Friday: 08:00 – 16:00 Saturday – Sunday: Closed
<b>Strumica</b> Ul. Mladinska 119 2400 Strumica Phone: +389-78-504234 Working hours: Monday – Friday: 09:30 – 15:00 Saturday – Sunday: Closed	<b>Prilep</b> Bul. Goce Delchev 49A 7500 Prilep Phone: +389-48-404401 Mobile: +389-78-307070 Working hours: Monday – Friday: 08:00 – 16:00 Saturday – Sunday: Closed		

## READY TO SHIP?



Get a quote



02/15 333



Chat



mkgeneral@dhl.com



Find your nearest DHL Service Point

DHL Express Macedonia  
Ul. 32 br. 5 Nas. Ilinden  
1041, Skopje



Valid: 1st January 2024. For public use. The information in this guide is correct as of 1st January 2024. DHL reserves the right to amend or modify any of the information at any time.