



DHL EXPRESS

# SERVICE & RATE GUIDE 2023

## SAUDI ARABIA

### GET STARTED

[Connecting Your World](#)

[Dear Customer](#)

[Sustainability](#)

[Service Offering](#)

[How to Ship with DHL Express](#)

[Digitalization](#)

[Zones and Rates](#)

Ready to ship?  
Get a quote from [MyDHL+](#)



# CONNECTING YOUR WORLD

Operating in  
**220+**  
countries and  
territories worldwide



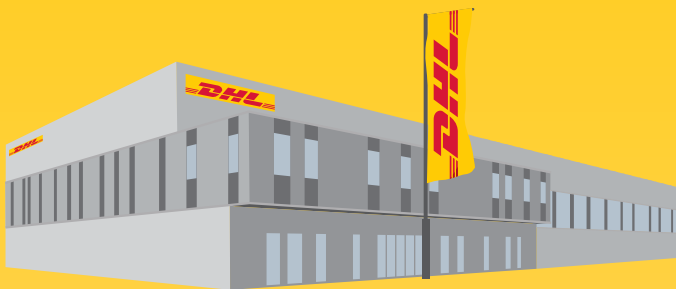
**320+**  
aircraft



**2,300+**  
flights per day



**34,600+**  
vehicles



**3,400+**  
facilities



**111,800+**  
Service Points

**523**  
million+  
shipments per year



**120,000+**  
employees

By the year 2050,  
Deutsche Post DHL Group  
aims to achieve net zero  
emissions logistics

MISSION 2050  
**ZERO EMISSIONS**  
**GOGREEN**



**370+**  
TAPA\* certifications



Figures are global and are approximate as of the end of 2021  
\*TAPA = Transported Asset Protection Association

# DEAR CUSTOMER

Welcome to the DHL Express Service and Rate Guide 2023. Use this guide to learn how DHL Express products, services and tools can meet your logistics needs. DHL Express is the global market leader and a specialist in Time Definite International (TDI) shipping and courier delivery. We have been building and continuously improving for over 50 years through our team of 120,000 Certified International Specialists, helping more than 2.7 million customers globally.

The world has been buffeted by COVID-19 since 2020. We are proud that DPDHL, having enabled supply chains to move more than 2.5 billion vaccine doses so far, continues to contribute to the solution – and we are adapting every day to a still-evolving situation. Apart from the pandemic, the Ukraine crisis has also added material complexity to global logistics.

In response to these and other uncontrollable events, we continue to make significant **investments** to reinforce the resilience of our global network and secure critical supply chains – thereby continuing to prove our ability to offer reliable services to our customers globally. As an example, we invested in the expansion of our air network, with new airline collaborations with Cargojet and Singapore Airlines in addition to the acquisition of six Boeing 777F aircraft. In the Kingdom of Saudi Arabia, we increased the capacity of our operations all around the Kingdom. We also increased the number of flights in the Kingdom to reach 48 flights per week. Investments like these allow us to grow the DHL network and improve service quality for our customers in the Kingdom and throughout the world, supporting them in reaching their business goals.

**Environmental responsibility** continues to be a pillar of our long-term strategy through the DPDHL Sustainability Roadmap. In 2022 we signed ground-breaking agreements with bp and Neste to increase our use of Sustainable Aviation Fuel (SAF). We continue to accelerate the electrification of our last-mile fleet while investing in next-generation technology such as the all-electric Alice airplane, designing and constructing carbon neutral buildings and offering a portfolio of green products. Read more about this on page 4 and on the DPDHL Sustainability portal.

As part of Strategy 2025, we continue to earmark **Digitalization** – which we define as the conscious application of technology and enablement of people, as a means to improve – as a key enabler to reach the next level of excellence for our customers, for our employees and to drive operational efficiency. Read about some of the key developments on pages 15 and 16 and how they benefit you. Try some of them out at MyDHL+ if you haven't already!

We strive to successfully continue our partnership and remain committed to supporting your business anytime and anywhere. **Globalization** remains a powerful force and we invite you to read the first edition of the global DHL Trade Growth Atlas report, which we hope will become a go-to resource for understanding and navigating shifts in the global trade landscape – see page 7 for more. Thank you for trusting us to be your Logistics Partner of Choice! Tell us how we can support you further – please reach out to us on MyDHL+ or by calling Customer Service on 920003450.

Sincerely,

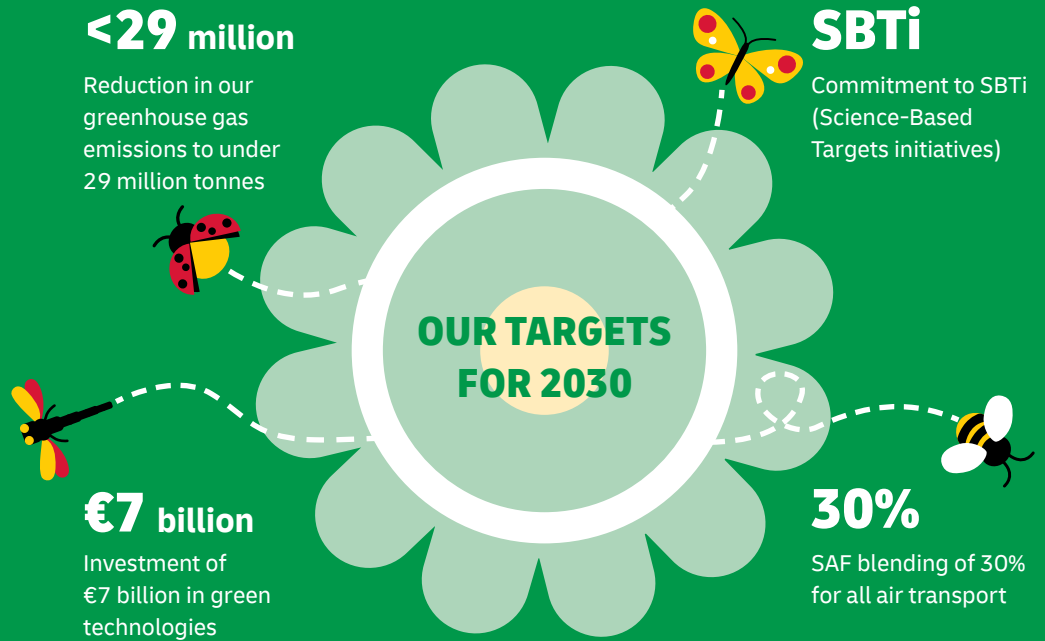
AbdulAziz Busbata  
Country Manager  
DHL Express Saudi Arabia



- Connecting Your World
- ▶ Sustainability
- Service Offering
- How to Ship with DHL Express
- Digitalization
- Zones and Rates

# SUSTAINABILITY

Everything we do is to serve one purpose: **Connecting people, improving lives.** To fulfill this purpose, we need to make every dimension of our business sustainable. Our Sustainability Roadmap sets out our ambitions in three focus areas: Environment, Social and Governance (ESG). Find case studies and more details [here](#).



## CLEAN OPERATIONS FOR CLIMATE PROTECTION



**Leader in sustainable aviation**  
Sustainable Airline Fuel (SAF), one of the key ways to reduce CO<sub>2</sub> in aviation, is already in use in our network. Two landmark collaborations signed by DHL Express with bp and Neste in 2022 are expected to save some **two million tons** of carbon dioxide emissions over the aviation fuel cycle – equivalent to the annual greenhouse gas emissions of approx. 400,000 passenger cars. In this way, we are making significant steps towards our commitment to use **30%** of SAF blending for all air transport by 2030.

Looking even further ahead, DHL is already pioneering next-generation innovations: [read more about Alice](#), the all-electric plane.



**Green last-mile and line-haul**  
Electrify **60%** of last-mile delivery vehicles and increase share of sustainable fuels in line haul to more than **30%** by 2030.



**Carbon neutral buildings**  
Design **100%** of all new buildings to be carbon neutral.



**Green product portfolio**  
Offer green alternatives for **100%** of all core products and solutions.

### GREAT COMPANY TO WORK FOR ALL

- Attract and retain the best talent
- Strong 'Safety First' culture
- Diverse and inclusive workplace

### HIGHLY TRUSTED COMPANY

- Compliance as an integral part of daily business
- Effective governance set-up across our organization
- Like-minded and compliant suppliers and partners



# SERVICE OFFERING

**Export  
Services**

**Import  
Services**

**Domestic  
Services**

**Enabling Your  
Growth**

**Optional  
Services**

**Surcharges**

**Customs  
Services**

Our core services are Time Definite International (TDI) and offer you secure door-to-door delivery of goods and documents to and from virtually every country and territory. Whether you need your shipments delivered at the start, middle or end of a business day, our services offer full track-and-trace visibility so you always know where your shipments are.

## EXPORT SERVICES

### DHL Express Worldwide

Our most popular product, DHL Express Worldwide, offers an end of business day delivery service around the world for pieces up to 70kg and shipments up to 3,000kg.

We deliver reliably and quickly to more global destinations across a single integrated network than any other express delivery company.

### DHL Express 12:00

With DHL Express 12:00 you will receive your shipments before 12 noon on the next possible business day. DHL Express 12:00 offers a money-back guarantee\* and allows for pieces up to 70kg and shipments up to 300kg.

### DHL Express 9:00 (10:30 to the USA)

Our premium time-definite service offers a delivery before 9:00 (10:30 to the USA) on lanes that guarantee either a next or second business day delivery. DHL Express 9:00 is offered to the majority of business centers in Europe, the Middle East, Africa, Asia and the Americas. DHL Express 9:00 features a money-back guarantee\* and is suitable for pieces up to 30kg and shipments up to 300kg.

### Our international services at a glance

	DHL Express Worldwide	DHL Express 12:00	DHL Express 9:00 (10:30 to the USA)
<b>Service description</b>	Delivery by the end of the next possible business day	Delivery before 12 noon on the next possible business day	Delivery before 9:00 (10:30 to the USA) on the next possible business day
<b>Money-back guarantee</b>	No	Yes*	Yes*
<b>Countries and territories covered</b>	More than 220	144	90
<b>Delivery attempts</b>	2	2	2
<b>Maximum piece weight (not on pallet)</b>	70kg	70kg	30kg
<b>Maximum pieces per shipment</b>	–	10	10
<b>Maximum piece dimensions (L x W x H)**</b>	120 x 80 x 80cm	120 x 80 x 80cm	120 x 80 x 80cm
<b>Maximum pallet weight</b>	300kg	Pallets not accepted	Pallets not accepted
<b>Maximum shipment weight</b>	3,000kg	300kg	300kg
<b>Maximum pallet dimensions (L x W x H)</b>	300 x 200 x 160cm	Pallets not accepted	Pallets not accepted

\*Additional terms and conditions apply – see mydhl.express.dhl for details.

\*\*A shipment is deemed unacceptable if its packaging is absent or inadequate, or if transporting the shipment would present risks of damaging equipment, other packages or injuring personnel. DHL reserves the right to either not accept or return the shipment to the shipper. These network restrictions are subject to change with 30 days' notice.

# SERVICE OFFERING

Export  
Services

Import  
Services

Domestic  
Services

Enabling Your  
Growth

Optional  
Services

Surcharges

Customs  
Services

## IMPORT SERVICES

With the DHL Express Worldwide Import product, you can import shipments from over 220 countries and territories in the world. This is more than any other express delivery company can offer. What's more, customers in, say, the USA can order an import from China not just to the USA, but to any other destinations as well – we call this a Third Country shipment.

There is no need for local brokers or forwarders to get involved in any part of the process. You are in full control, and able to manage all aspects of your imports in a very simple way.

If you need a faster delivery, our DHL Express 12:00 and DHL Express 9:00 services are available for import as well. You can order an import from another country, to be delivered to your country or any other destination, by using our dedicated electronic shipping solution for imports. You will have one account number, one invoice in a single currency and a fixed price that means you know exactly what you will pay.

## DOMESTIC SERVICES

If you want to ship documents or goods within your own country, we can offer our Time Definite Domestic products with delivery time guarantees of 12:00, 9:00 or the end of the next possible business day.

## DHL EXPRESS ENVELOPE

Our DHL Express Envelope service provides door-to-door international delivery of lightweight document shipments by the end of the next possible business day. It also offers you carbon neutral shipping at no extra charge.

- Up to 300g
- Global coverage
- Document shipments only
- Packaging envelope included
- GoGreen Climate Neutral service



# SERVICE OFFERING

Export  
Services

Import  
Services

Domestic  
Services

Enabling Your  
Growth

Optional  
Services

Surcharges

Customs  
Services

## GLOBAL TRADE AND YOU

A series of crises has put international trade at the center of the debate about economic growth and resilience. What are the current prospects for globalization and trade? Is there cause for concern? Is trade still an attractive source of growth? We deep dived into the data and conducted a thorough, fact-based analysis – and the results might just surprise you. In partnership with NYU Stern's Center for the Future of Management and its DHL Initiative on Globalization, the 'DHL Trade Growth Atlas' examines global trade growth trends and the trade patterns of 173 countries worldwide that combined make up more than 99% of world trade, GDP and population. Despite recent shocks and worsening macroeconomic conditions in much of the world, the study overall gives an upbeat assessment of the prospects for future trade growth.

We know the value of understanding the long-term global trade landscape for navigating short-term shifts in economic and trade growth. We help our customers make sense of what this means for their business to maximize the enormous potential of globalization and international trade.

**Global trade surprisingly resilient** through COVID-19 pandemic

**Trade likely to grow faster** in 2022 and 2023 than in previous decade

**Shift in mix of products** traded by advanced vs. emerging economies



## POWERING UP THE POTENTIAL OF INTERNATIONAL E-COMMERCE

### Discover and grow

Visit [dhl.com/discover](https://dhl.com/discover) to learn more about how DHL helps e-commerce companies ranging from start-ups to large enterprises, advising them on how to grow internationally. Our e-commerce focussed country guides, white papers such as 'The Ultimate B2B E-Commerce Guide', customer and trend research and market intelligence tools can enable you to better understand your customers and their shipping requirements to take the next step in your e-commerce journey.

### International e-commerce

We help our customers go global with ease and speed to maximize the enormous potential of international e-commerce. DHL supports our customers' international growth with:

- Global reach
- Express delivery options
- Flexible delivery options for receivers (see 'On Demand Delivery' on page 15)
- Duty billing options and customs expertise
- Consultative advice for our customers on how to increase sales and grow cross-border

### Fast, flexible and easy

Consumers expect everything 'on demand' – anytime, anywhere. DHL shipping options give customers a distinct competitive edge: over 90% of online consumers look at the available delivery options before going to the checkout, and their decision is influenced by delivery speed, flexibility and ease.



# SERVICE OFFERING

[Connecting Your World](#)
[Sustainability](#)
[▶ Service Offering](#)
[How to Ship with DHL Express](#)
[Digitalization](#)
[Zones and Rates](#)
[Export Services](#)
[Import Services](#)
[Domestic Services](#)
[Enabling Your Growth](#)
[Optional Services](#)
[Surcharges](#)
[Customs Services](#)

## OPTIONAL SERVICES

[View charges](#)

DHL Express offers a wide range of optional services – from non-standard deliveries and billing options to climate neutral shipping.

### Dedicated Pickup and Delivery

If your business needs a dedicated vehicle to collect or deliver unusual shipments, or a pickup or delivery outside normal business hours, we can arrange this.

### Shipment Preparation

This is a convenient, fast and reliable service for seasonal or irregular shipments that require extra resources for their preparation. DHL manages the entire process of waybill preparation, content selection, labeling and packaging, then sends the shipments to the designated addresses.

### Saturday Delivery

We offer Saturday delivery services to key cities in more than 70 countries.

### Shipment Insurance

We recommend this comprehensive protection for your valuable or personal shipments, giving you peace of mind in the unlikely event of physical damage or loss.

### Extended Liability

If you are sending valuable documents such as passports, visa applications or regulatory certificates you can extend the DHL standard liability with this service. It provides coverage and compensation in the case of loss or damage.

### Direct Signature

If you are sending sensitive documents or high value contents you can request DHL to obtain a direct signature from the consignee or a representative at the delivery address. DHL will

ensure your shipment is not re-directed, or delivered at an alternative address.

### Residential Address

Customers shipping to a home or private residence can activate specific delivery options by designating the delivery address as residential. For such shipments, DHL Express will proactively notify the receiver via email or SMS about the shipment's progress. Receivers can then select the most suitable delivery option via [On Demand Delivery](#).

### Change of Billing

This applies when a customer requests a change of defined billing information on an already issued invoice, which will result in a reissuing of the invoice and, in case of an account change, crediting of the old account and debiting of the new.

### Neutral Delivery

This service allows for the delivery of non-document shipments, without any value of the product being shared or exposed to the receiver, since the commercial invoice is removed prior to delivery.



## DUTY BILLING SERVICES

### Duty Tax Paid

At the customer's request, DHL clears the shipment at destination and arranges for the applicable import duties, taxes and regulatory charges to be invoiced to a specified DHL account at origin or third country, rather than the receiver of the shipment being billed at destination. The duty tax payer will be invoiced an extra charge based on a flat rate or a percentage of the fiscal charges that were paid.

### Duty Tax Importer

At the customer's request, DHL clears the shipment at destination and arranges for any applicable import duties, taxes and regulatory charges to be invoiced to the importer's specified DHL account at destination. The duty tax payer will be invoiced an extra charge based on a flat rate or a percentage of the fiscal charges that were advanced. The shipper must provide the importer's address details, tax ID and the account number to be billed.

### Duty Tax Receiver

This service covers any import of a non-document shipment for which DHL has used its own credit line with Customs to advance or guarantee the payment of duties, taxes or regulatory charges on behalf of importers and consumers with whom DHL has no contract. An extra charge based on a minimum rate or a percentage of the fiscal charges that were advanced or guaranteed is billed to the duty tax payer.

For a full list of optional services, please visit [mydhl.express.dhl](https://mydhl.express.dhl).



# SERVICE OFFERING

Export  
Services

Import  
Services

Domestic  
Services

Enabling Your  
Growth

Optional  
Services

Surcharges

Customs  
Services

## SURCHARGES

[View charges](#)

In order to maintain a consistently high level of service, in specific circumstances DHL Express levies a surcharge for exceptional activities, ensuring that these surcharges are fair for all of our customers.

### Fuel Surcharge

This variable surcharge is applied to the weight charge of each shipment and any transportation related surcharges. It is derived from publicly available fuel oil indices that are also shown on the DHL Express website at [mydhl.express.dhl](http://mydhl.express.dhl). The charge is calibrated every month to the oil price that was current two months prior to the billing month.

### Remote Area

This surcharge applies when a shipment is collected from or delivered to a location that is distant or difficult to serve.

### Overweight Piece

A fixed surcharge is applied to every piece, including a pallet that exceeds a scale or volumetric weight of 70kg.

### Oversize Piece

This fixed surcharge applies to every piece, including a pallet, with a single dimension in excess of 120cm.

### Non-Stackable Pallet

This fixed surcharge is applied to every pallet within a shipment that cannot be stacked, either on request by the shipper, or because of its shape, content or packaging. This surcharge does not apply to pieces below 30kg.

### Dangerous Goods

DHL can carry acceptable quantities of dangerous goods or hazardous materials. Packages containing dangerous goods materials will be assessed and a service charge will be applied accordingly. Additional charges may also apply.

### Address Correction

This fixed surcharge is applied to any shipment that has an incorrect delivery address at the time of pickup and the delivery cannot be fulfilled after making efforts at the destination to determine the correct address.

### Data Entry

This fixed surcharge applies for each shipment consigned with non-electronic, paper based manual waybills. Electronic shipping documentation incurs no additional charges.

### Security Charges

Additional surcharges may apply when shipping from or to a destination country where DHL is operating at elevated risk due to continuous state of war, civil unrest, or continuous threats from terrorism (**Elevated Risk**), or when shipping from or to a destination country that is subject to trade restrictions imposed by the UN Security Council (**Restricted Destination**).

### Peak Season

A temporary surcharge, which allows us to cover part of the operating cost increases resulting from necessary network adjustments during Peak Season.

### Bulk Packaging and Plastic Flyer Stack

Charges apply for all DHL standard packaging items including plastic flyers provided in bulk or stacks.



For a full list of surcharges, please visit [mydhl.express.dhl](http://mydhl.express.dhl).

# SERVICE OFFERING

---

[Connecting Your World](#)


---

[Sustainability](#)


---

[▶ Service Offering](#)


---

[How to Ship with DHL Express](#)


---

[Digitalization](#)


---

[Zones and Rates](#)


---

[Export Services](#)
[Import Services](#)
[Domestic Services](#)
[Enabling Your Growth](#)
[Optional Services](#)
[Surcharges](#)
[Customs Services](#)


---

## CUSTOMS SERVICES

[View charges](#)

DHL Express is the international specialist in shipping, with extensive knowledge and experience of dealing with customs topics worldwide. For your peace of mind, we provide a wide range of customs support for standard as well as non-routine customs-clearance processes. By making sure that clearance is a smooth and efficient process, we ensure your shipments arrive as quickly as possible, and leave you free to focus on your core business. With our online tool ([tas.dhl.com](https://tas.dhl.com)) we provide essential customs information to help you prepare your shipments.

### Broker Notification

At the importer's request, DHL will provide the necessary paperwork to the customer's designated broker to perform the import clearance and resume the delivery to the final destination once the clearance is completed. DHL is subsequently not responsible for the timeliness of the submission to customs or for the release of the shipment.

### Release to Broker

At the importer's request, the release of a DHL Express shipment to the customer's designated customs broker of choice. DHL will transfer the responsibility for a shipment and related customs documentation to the customer's nominated broker for clearance and last mile delivery.

### Non-Routine Entry

Applies when shipments are subject to non-routine clearance procedures, due to their value, weight and/or commodity as defined by destination Customs Authorities. May also apply in selected countries where DHL is legally obliged to outsource formal clearance entries to a licensed third party broker.

### Bonded Storage

Storage charges apply when the shipment cannot be released by customs due to inaccurate or missing paperwork. Charges take effect three calendar days after the freight arrival date or broker notification, whichever is later. The charge applies to the duty and taxes payer.

### Bonded Transit

Usually operated within a country or customs union when DHL is requested to move non-document foreign-origin goods under bond to a location other than the regular DHL gateway at destination, prior to final clearance by the importer or his designed broker. Bonded Transit may apply to both export and import shipments.

### Export Declaration

Applies in countries where an export declaration is required for shipments containing controlled commodities or a certain weight. Depending on origin country, shippers that submit a declaration online may avoid the local charge.

### Multiline Entry

A service charge will be assessed for multiline item entries with more than five lines. An example would be – one shipment with multiple products or multiple invoices. All products require identification and must be classified under separate harmonized tariff numbers.

### Permits and Licenses

To accelerate import of selected controlled commodities, such as medical devices, pharmaceuticals, computer monitors, laser CD players, cosmetics, eyeglasses, food and food products, DHL is required to file specific information in order to obtain the required import permits or licenses.

### Temporary Import Export

At Customer's request DHL facilitates the temporary import/export of goods by submitting required documents such as an ATA Carnet and adhering to required clearance procedures as specified by Customs.

# HOW TO SHIP WITH DHL EXPRESS

Preparing Your Shipment

Packaging Your Shipment

Paying for Your Shipment

## PREPARING YOUR SHIPMENT: AS EASY AS 1-2-3

### 1 Shipment weight

- Please weigh and measure your shipment.
- If you are sending a large but lightweight shipment, where its volumetric (dimensional) weight exceeds its actual weight, the cost of the shipment is calculated on the space your consignment takes up on the aircraft. This is a standard IATA method. To calculate the volumetric weight of your shipment, simply multiply the length by height by width in centimeters, then divide the total sum by 5,000 for each piece in the shipment.
- Any piece in the shipment may be re-weighed and/or re-measured by DHL to confirm this calculation.

### 2 Documentation required: waybill

- All shipments sent with DHL Express need to have a fully completed DHL waybill or label securely attached to each piece. This will enable the successful movement of your shipment through the DHL network. Each waybill or label is individually numbered to allow you to track your shipment from collection through to delivery.
- Your shipment may also need to be accompanied by customs documentation, such as a commercial or proforma invoice, as well as additional paperwork depending on the contents and value of the shipment and the country you are sending to.

### 3 Documentation required: invoice

- A commercial or proforma invoice is required when sending non-document shipments to countries and territories outside your origin country or customs union. This is essentially a declaration containing all the details of a transaction and is used by customs authorities to assess if duties or taxes are payable.
- A commercial invoice is used when goods are part of a commercial transaction or intended for resale.
- A proforma invoice is used when sending goods of no commercial value (for example, when sending samples).



# HOW TO SHIP WITH DHL EXPRESS

Connecting Your World
Sustainability
Service Offering
▶ How to Ship with DHL Express
Digitalization
Zones and Rates

Preparing Your Shipment

Packaging Your Shipment

Paying for Your Shipment

## PREPARING YOUR SHIPMENT INVOICE

Your invoice will require the following details:

### 1. BANK DETAILS

These are the bank details that will be used for the transaction between the seller and buyer. These details are not required for non-commercial/proforma invoices.

### 2. DESCRIPTION

Generic or broad descriptions are no longer permitted and are likely to cause delays. Descriptions should include the items, how many there are, what they are made of, and what they will be used for. Describing items as ‘samples’, ‘parts’ or ‘electronics’ is not acceptable for customs classification, safety and security reasons. Instead of ‘electronics’, for example, use a description such as ‘television’.

### 3. COMMODITY CODE

This is the product identification code used by the exporting country to classify the goods to be exported. It assists clearance and avoids delays.

### 4. COUNTRY OF MANUFACTURE/ORIGIN

This relates to the place of manufacture, not the country of export. If items are manufactured in more than one country, please list the origins.

### 5. TOTAL DECLARED VALUE

This is the total value of the transaction for customs purposes based on the Incoterm selected. The total declared value should include freight and insurance charges if the seller is responsible for these two elements.

### 6. TYPE OF EXPORT

The options are: (1) Permanent; (2) Temporary; and (3) Repair & Return.

### 7. INCOTERM

Insert the Incoterm that best describes the terms of the transaction. For example, DAP (Delivered At Place).

### 8. REASON FOR EXPORT

This could be: For Sale; For Repair; After Repair; Gift; Sample; Personal Use Not For Resale; Replacement; Intercompany Transfer; or Personal Effects.

### Commercial invoice

Bank details

1.

Importer (bill to)

Full description of goods	Commodity code	Item quantity	Unit value [Currency]	Subtotal value [Currency]	Net weight	Country of manufacture/origin
2.	3.					4.
Freight						
Insurance						
Total declared value/currency				Total net weight/kg(s)		
Total pieces				Total gross weight/kg(s)		

Exporter

Tax ID/VAT number

---

Date

Waybill number

Invoice number

Exporter code

---

Receiver if different from Importer

Tax ID/VAT number

---

Shipment reference

**6.** Type of export

**7.** Incoterms

**8.** Reason for export

I/We hereby certify that the information contained in this invoice is true and correct and that the contents of the shipments are as stated above.

Position in company

Signature

Company stamp



# HOW TO SHIP WITH DHL EXPRESS

## Preparing Your Shipment

## Packaging Your Shipment

## Paying for Your Shipment

## PACKAGING YOUR SHIPMENT

To ensure that your shipments travel safely and securely through the DHL Express global network, it is important that they are packaged and labeled correctly.

### Packaging guidelines

- If you are re-using envelopes or boxes, please ensure that old labels and markings are removed
- Securely fix a waybill to each piece in your shipment. The waybill can be thought of as the shipment's airline ticket and it will delay delivery if it becomes separated from your shipment
- The barcodes on the waybill are scanned at numerous points during your shipment's journey. Please ensure the barcode is flat and not covered by tape, shrinkwrap or strapping
- Place a waybill on the top or side of each piece in your shipment and please ensure it does not overlap the corners or edges of boxes
- Use adequate protective wrapping for fragile or delicate items and ensure they are packed as far away as possible from the corners of boxes
- To prevent injury to our employees, please pay special attention to the packaging of sharp items. There should not be any possibility of the contents piercing the packaging
- Any individual pieces over 70kg should be placed on a pallet. If you are sending a multi-piece shipment, it is not necessary to place the individual pieces on a pallet unless they exceed 70kg. For example, a shipment comprising four 25kg pieces does not have to be placed on a pallet

### DHL packaging

We offer a range of high-quality DHL-branded packaging items, suitable for shipping items of all shapes and sizes.

The items available include:

- Flyer bags
- Cardboard document envelopes
- Boxes in a range of sizes

For more information please refer to the Packing Guide available on [mydhl.express.dhl](https://mydhl.express.dhl).

### Prohibited and Restricted Commodities

#### Prohibited Items

The following items will NOT be accepted for carriage by DHL. This list includes items which are prohibited for carriage by any law, regulation or statute of any federal, state or local government of any country from, to or through which the items may be carried. For international carriage there may be additional prohibited items specified by the country of destination. DHL may at its sole discretion refuse to carry other items not listed below.

- Bullion (of any precious metal)
- Cannabis
- Cash (legal tender – bank notes, currency notes and coins)
- Complete firearms, ammunition, explosives/explosive devices including inert explosives and test pieces, air guns, replica and imitation firearms
- Human remains or ashes in any form
- Hunting (animal) trophies, animal parts such as ivory and shark's fin, animal remains or ashes, or animal by-products and derived products not intended for human consumption, prohibited for movement by the Convention on International Trade in Endangered Species of Wild Fauna and Flora (CITES) and/or local law
- Illegal goods, such as counterfeit goods and narcotics
- Live animals (including but not limited to mammals, reptiles, fish, invertebrates, amphibians, birds, insects, larvae and pupae)
- Loose lithium metal batteries under IATA PI968 section II
- Loose precious and semi-precious stones (cut or un-cut, polished or un-polished)



# HOW TO SHIP WITH DHL EXPRESS

## Preparing Your Shipment

## Packaging Your Shipment

## Paying for Your Shipment

### Restricted Items

The following items will NOT be accepted for carriage unless otherwise agreed to by DHL. To obtain such agreement a business case will need to be conducted by DHL and the items approved for carriage will be recorded in writing with the customer.

- Air guns, tasers, imitation or replica firearms, firearm parts and replica ammunition (includes rifle butts, trigger mechanisms, screws/bolts etc which are manufactured for the sole purpose of creating a functional firearm)
- Antiques and works of art with a shipment value in excess of €500,000
- Banderols/Tax stickers with a shipment value in excess of €500,000
- Cigarettes, cigars, tobacco products and electronic cigarettes with a shipment value in excess of €500,000
- Commemorative coins and medals with an individual value or total shipment value of €2,000 or more are restricted for carriage
- Dangerous/hazardous goods including but not limited to perfumes, aftershaves, aerosols, flammable substances, dry ice, biological substances, UN classified dangerous goods and any goods specified as such under International Air Transport Association regulations (“IATA”), the

Agreement on Dangerous Goods by Road (“ADR”) or International Maritime Dangerous Goods (“IMDG”) regulations

- Financial and monetary commodities – examples include but are not limited to activated SIM cards for mobile phones, blank or activated credit or cash dispenser cards, blank checks, event tickets, lottery tickets, money or postal orders, pre-paid phone cards, tickets (blank stock), traveler’s checks, vouchers/tokens, unused stamps etc. Applicable to all shipments valued in excess of €500,000
- Furs
- Jewelry and watches and with individual values in excess of €5,000. The shipment must not exceed €100,000

## PAYING FOR YOUR SHIPMENT

You can pay for DHL Express services either with cash, a credit card or by bank transfer. You can open an account with DHL Express to pay via bank transfer; and all account customers receive invoices on a pre-agreed basis. For more details, please get in touch with a Customer Service Advisor at your local DHL Express office or go to [mydhl.express.dhl](http://mydhl.express.dhl).



# DIGITALIZATION

- Connecting your World
- Sustainability
- Service Offering
- How to Ship with DHL Express
- Digitalization
- Zones and Rates

Digitalization is one of the most important trends impacting logistics, and it is one of the key pillars of DPDHL's Strategy 2025. Through digitalization we bring benefits for our customers, our operations and our own people.

We invest continually in market-leading technologies to help our customers to manage and monitor shipments, create shipping labels, get quotes, schedule courier pickups, connect with us and more. Digitalizing our operations provides more transparency, allowing us to better anticipate and meet our customers' needs.

## ON DEMAND DELIVERY

DHL's On Demand Delivery tool keeps receivers informed of shipment progress, allowing them to reschedule, reroute, release or conveniently collect from a DHL Service Point. It is an innovative, easy-to-use, mobile-friendly service, especially for residential deliveries.

Designed to enhance the online shopper's experience, the service is available globally, meaning consistent service standards and a harmonized user experience.



[ondemand.dhl.com](http://ondemand.dhl.com)



Scheduled delivery



Signature release/leave your signature



Alternative address



Collect from Service Point



Vacation hold



Leave with neighbor or concierge

## DHL EXPRESS COMMERCE

Take your website international with DHL Express Commerce. Offer your customers all the benefits of DHL Express at your checkout in real-time. Import, manage and ship their orders quickly and efficiently with no complicated development. Add the power of DHL Express to your e-commerce business quickly and easily, giving you the competitive edge. DHL Express Commerce integrates with the biggest e-commerce platforms, including: Magento, Shopify, WooCommerce, Amazon and eBay.

## MYDHL+

[mydhl.express.dhl](http://mydhl.express.dhl)

MyDHL+ re-imagines the way the shipping business does business, by combining the tools and services our customers use most. With its mobile friendly and intuitive interface, customers can now import, export, schedule a pickup, track shipments and pay bills more quickly than ever – all in one visit, with one password and zero headaches. MyDHL+ makes it incredibly easy to navigate the complexities of international shipping.



## DHL EXPRESS MOBILE APP



The DHL Express Mobile app lets you track your shipments and manage your deliveries all in one place. You can locate the nearest DHL Service Point for parcel drop off or collection, and quickly check shipping rates too – right on your smartphone. Advanced GPS location services and camera barcode scanning are also available. Download DHL Express Mobile today, on Android or iOS.



# DIGITALIZATION

---

 Connecting your World
 

---

 Sustainability
 

---

 Service Offering
 

---

 How to Ship with DHL Express
 

---

 ► Digitalization
 

---

 Zones and Rates
 

---

## DIGITAL ASSISTANT

Our Digital Assistant is a live chat helpdesk that offers a 24/7 service across multiple online channels and platforms, and in 41 languages, including Arabic. A live chat helpdesk, it tracks your shipments, answers queries and directs you to FAQs, and has had almost 190,000 distinct sessions in Saudi Arabia over the course of a year.



[Chat with us now!](#)



## DIGITAL TRUST

Logistics requires transferring data and content around the world and we embrace a responsibility to do this securely. Our standards led by our binding Corporate Rules and by our [Data Privacy Policy](#) apply throughout the DPDHL Group and are approved by the Supervisory Authorities. We maintain a comprehensive [Information Security](#) and [Data Protection](#) approach based on ISO/IEC 27001:2013 and GDPR, to ensure a high standard when managing customer information assets and personal data. We aim to provide a rapid response to any security incident via our 24x7 Cyber Defence Centre (CDC) with global coverage and our global DPO community.

DPDHL acts as controller in respect of any personal data it receives from customers and holds to effectively provide transportation services and in regard to the delivery of any shipments or documents that it processes to perform its contractual obligations. DPDHL will act as a data controller when an individual is executing their rights under privacy legislations.

## CUSTOMER SHIPPING INTEGRATION

Using EDI and XML Services enables you to incorporate DHL's online shipping capabilities into your own website, warehouse or customer service application. This provides global shipment tracking while making it faster and easier to access information about transit times, rates and courier bookings.

## SPECIFIC SOLUTIONS

DHL offers additional capabilities for businesses requiring more specialized solutions – for example, its Medical Express and Collect & Return services.

## ROBOTICS

Driven by rapid technological advancements and increasing supply chain complexity, robotics solutions are entering the logistics environment, boosting productivity and driving zero-defect processes.

Robots are adopting more roles at DHL Express, assisting workers with the most repetitive and labor-intensive tasks and freeing them up to do higher-order, customer-facing activities. Examples include the use of articulated robotic arms for sorting inbound packages to last-mile delivery routes. We have four such robots in use globally, with this number set to double soon.

Our robots help get couriers out on the road faster – which means your parcels get delivered faster.





# ZONES AND RATES

Calculate the Price  
of Your Shipment

Optional  
Services

Surcharges

Customs  
Services

Service Capability  
and Rating Zones

Export  
Services

Import  
Services

## CALCULATE THE PRICE OF YOUR SHIPMENT



Determine which zone your destination is in (pages [19](#) & [20](#)) and whether yours is a document or non-document shipment.



Is your shipment international (page [5](#)) or domestic (page [6](#)) and how quickly do you want it to arrive?



Based on weight (page [11](#)), zone and speed, confirm your base price (pages [21](#) & [22](#) for exports and pages [23](#) & [24](#) for imports).



Add any optional services (page [8](#)) and check if any surcharges apply (page [9](#)).

Base price + Optional services + Surcharges = **Total price**

## OPTIONAL SERVICES

[View explanation](#)

Optional services	Charging method	Charge
Dedicated Pickup	Per shipment	2.00 SAR with minimum of 90.00 SAR
Dedicated Delivery	Per shipment	2.00 SAR with minimum of 180.00 SAR
Shipment Preparation	Per shipment	85.00 SAR
Saturday Delivery	Per shipment	128.00 SAR
Shipment Insurance	By shipment value	75.00 SAR or 2% of shipment value if higher
Extended Liability	Per shipment	40.00 SAR
Direct Signature	Per shipment	25.00 SAR
Residential Address	Per shipment	15.00 SAR
Change of Billing	Per invoice	45.00 SAR
Neutral Delivery	Per shipment	21.00 SAR
<b>Duty Billing Services</b>		
Duty Tax Paid	% of fiscal charges	2 % with minimum of 100.00 SAR
Duty Tax Importer	% of fiscal charges	2 % with minimum of 80.00 SAR
Duty Tax Receiver	% of fiscal charges	110.00 SAR or 2% whichever is higher

For a full list of optional services, please visit our website at [mydhl.express.dhl](https://mydhl.express.dhl).

# ZONES AND RATES

[Calculate the Price of Your Shipment](#)
[Optional Services](#)
[Surcharges](#)
[Customs Services](#)
[Service Capability and Rating Zones](#)
[Export Services](#)
[Import Services](#)

## SURCHARGES

[View explanation](#)

Surcharges	Charging method	Charge
Fuel Surcharge	Per shipment	Percentage of transportation and additional charges, as per index; details <a href="#">here</a>
Remote Area	Per shipment	5.00 SAR per kg with minimum of 85.00 SAR
<b>Additional Handling</b>		
Overweight Piece	Per piece	351.00 SAR
Oversize Piece	Per piece	195.00 SAR
Non-Stackable Pallet	Per piece	975.00 SAR
<b>Dangerous Goods</b>		
Full Dangerous Goods	Per piece	340.00 SAR
Lithium Batteries Section II (966, 969)	Per piece	20.00 SAR
Excepted Quantities	Per piece	21.00 SAR
Limited Quantities	Per shipment	86.00 SAR
Dry Ice (UN1845)	Per piece	43.00 SAR
Address Correction	Per shipment	49.00 SAR
Data Entry	Per shipment	21.00 SAR
<b>Security Charges</b>		
Elevated Risk	Per shipment	84.00 SAR
Restricted Destination	Per shipment	126.00 SAR
<b>Packaging Items</b>		
Plastic Flyers	Per stack	73 SAR per stack (100 flyers)
Bulk packaging	Per stack	Variable by packaging type and quantity

## CUSTOMS SERVICES

[View explanation](#)

Customs services	Charging method	Charge
Broker Notification	Per shipment	43.00 SAR
Release to Broker	Per shipment	200.00 SAR
Non-Routine Entry	Per shipment	44.60 SAR
Bonded Storage	Per shipment, per day after three calendar days	1.00 SAR /kg/day(both per day after three calendar days)
Bonded Transit	Per shipment	200.00 SAR
Export Declaration	Per shipment	43.00 SAR
Multiline Entry	Rate per line, after five lines	15.00 SAR
Permits and Licenses	Per shipment	100.00 SAR
Temporary Import Export	Per shipment	200.00 SAR

Please visit our website for a full list of [surcharges](#) and [customs services](#).

- Connecting Your World
- Sustainability
- Service Offering
- How to Ship with DHL Express
- Digitalization
- ▶ Zones and Rates

# ZONES AND RATES

- Calculate the Price of Your Shipment
- Optional Services
- Surcharges
- Customs Services
- Service Capability and Rating Zones
- Export Services
- Import Services

## SERVICE CAPABILITY AND RATING ZONES

Country/Territory	Zone	DHL Epress Worldwide	DHL Epress 12:00	DHL Epress 9:00	Imports
Afghanistan	7	✓			✓
Albania	3	✓	✓	✓	✓
Algeria	3	✓			✓
American Samoa	7	✓			✓
Andorra	3	✓			✓
Angola	7	✓			✓
Anguilla	7	✓			✓
Antigua	7	✓			✓
Argentina	7	✓			✓
Armenia	6	✓			✓
Aruba	7	✓			✓
Australia	5	✓	✓	✓	✓
Austria	3	✓	✓	✓	✓
Azerbaijan	3	✓			✓
Bahamas	7	✓	✓	✓	✓
Bahrain	1	✓	✓	✓	✓
Bangladesh	5	✓			✓
Barbados	7	✓	✓	✓	✓
Belarus	7	✓			✓
Belgium	3	✓	✓	✓	✓
Belize	7	✓			✓
Benin	7	✓			✓
Bermuda	7	✓			✓
Bhutan	5	✓			✓
Bolivia	7	✓	✓	✓	✓
Bonaire	7	✓			✓
Bosnia and Herzegovina	3	✓			✓
Botswana	7	✓	✓	✓	✓
Brazil	7	✓	✓	✓	✓
Brunei	7	✓			✓
Bulgaria	3	✓			✓
Burkina Faso	7	✓	✓	✓	✓
Burundi	7	✓			✓
Cambodia	5	✓			✓
Cameroon	7	✓			✓
Canada	4	✓	✓	✓	✓
Canary Islands, The	3	✓			✓
Cape Verde	7	✓			✓
Cayman Islands	7	✓	✓	✓	✓
Central African Republic	7	✓			✓
Chad	7	✓			✓
Chile	7	✓			✓
China, People's Republic	5	✓			✓
Colombia	7	✓	✓	✓	✓
Comoros	7	✓			✓
Congo	7	✓			✓
Congo, Democratic Rep. of	7	✓			✓
Cook Islands	7	✓			✓
Costa Rica	7	✓			✓
Cote d'Ivoire	7	✓	✓	✓	✓
Croatia	3	✓	✓	✓	✓
Cuba	7	✓			✓
Curacao	7	✓	✓	✓	✓
Cyprus	3	✓	✓	✓	✓
Czech Republic, The	3	✓	✓	✓	✓
Denmark	3	✓	✓	✓	✓
Djibouti	7	✓			✓
Dominica	7	✓			✓
Dominican Republic	7	✓	✓	✓	✓

Country/Territory	Zone	DHL Epress Worldwide	DHL Epress 12:00	DHL Epress 9:00	Imports
Ecuador	7	✓	✓	✓	✓
Egypt	2	✓	✓	✓	✓
El Salvador	7	✓	✓	✓	✓
Eritrea	7	✓			✓
Estonia	3	✓	✓		✓
Eswatini	7	✓			✓
Ethiopia	7	✓			✓
Falkland Islands	3	✓			✓
Faroe Islands	3	✓			✓
Fiji	7	✓			✓
Finland	3	✓			✓
France	3	✓	✓	✓	✓
French Guiana	7	✓			✓
Gabon	7	✓			✓
Gambia	7	✓			✓
Georgia	3	✓			✓
Germany	3	✓	✓	✓	✓
Ghana	7	✓	✓	✓	✓
Gibraltar	3	✓			✓
Greece	3	✓			✓
Greenland	3	✓			✓
Grenada	7	✓			✓
Guadeloupe	7	✓			✓
Guam	7	✓			✓
Guatemala	7	✓	✓	✓	✓
Guernsey	3	✓	✓	✓	✓
Guinea Republic	7	✓			✓
Guinea-Bissau	7	✓			✓
Guinea-Equatorial	7	✓			✓
Guyana (British)	7	✓			✓
Haiti	7	✓			✓
Honduras	7	✓	✓	✓	✓
Hong Kong SAR China	5	✓	✓	✓	✓
Hungary	3	✓			✓
Iceland	3	✓			✓
India	2	✓			✓
Indonesia	5	✓			✓
Iran, Islamic Rep. of	7	✓	✓	✓	✓
Iraq	7	✓			✓
Ireland, Rep. of	3	✓	✓	✓	✓
Israel	-	✓			✓
Italy	3	✓	✓	✓	✓
Jamaica	7	✓			✓
Japan	5	✓			✓
Jersey	3	✓	✓	✓	✓
Jordan	2	✓	✓	✓	✓
Kazakhstan	7	✓			✓
Kenya	7	✓	✓	✓	✓
Kiribati	7	✓			✓
Korea, D.P.R. of (North)	7	✓			✓
Korea, Rep. of (South)	5	✓			✓
Kosovo	3	✓			✓
Kuwait	1	✓	✓		✓
Kyrgyzstan	7	✓			✓
Lao P.D.R.	5	✓	✓	✓	✓
Latvia	3	✓	✓	✓	✓
Lebanon	2	✓	✓	✓	✓
Lesotho	7	✓	✓	✓	✓
Liberia	7	✓			✓

doc = document contents only ✓ = document and non-document contents

Table continues overleaf

For transit times and the availability of DHL Express 12:00 and DHL Express 9:00 for your origin and destination address, please refer to the DHL Capability Tool at [dct.dhl.com](https://dct.dhl.com). Pieces with a single base length up to 300cm are accepted. Additional surcharges may apply.

- Connecting Your World
- Sustainability
- Service Offering
- How to Ship with DHL Express
- Digitalization
- ▶ Zones and Rates**

# ZONES AND RATES

- Calculate the Price of Your Shipment
- Optional Services
- Surcharges
- Customs Services
- Service Capability and Rating Zones
- Export Services
- Import Services

## SERVICE CAPABILITY AND RATING ZONES

Country/Territory	Zone	DHL Epress Worldwide	DHL Epress 12:00	DHL Epress 9:00	Imports
Libya	7	✓			✓
Liechtenstein	3	✓	✓	✓	✓
Lithuania	3	✓			✓
Luembourg	3	✓	✓	✓	✓
Macau SAR China	7	✓			✓
Madagascar	7	✓			✓
Malawi	7	✓			✓
Malaysia	5	✓	✓	✓	✓
Maldives	7	✓			✓
Mali	7	✓			✓
Malta	3	✓	✓	✓	✓
Marshall Islands	7	✓			✓
Martinique	7	✓			✓
Mauritania	7	✓			✓
Mauritius	7	✓	✓	✓	✓
Mayotte	7	✓			✓
Meico	4	✓			✓
Micronesia, Fed. States of	7	✓			✓
Moldova, Rep. of	3	✓			✓
Monaco	3	✓	✓	✓	✓
Mongolia	6	✓			✓
Montenegro, Rep. of	3	✓			✓
Montserrat	7	✓			✓
Morocco	3	✓	✓	✓	✓
Mozambique	7	✓	✓	✓	✓
Myanmar	5	✓			✓
Namibia	7	✓			✓
Nauru, Rep. of	7	✓			✓
Nepal	5	✓			✓
Netherlands, The	3	✓	✓	✓	✓
Nevis	7	✓			✓
New Caledonia	7	✓			✓
New Zealand	5	✓	✓	✓	✓
Nicaragua	7	✓	✓	✓	✓
Niger	7	✓			✓
Nigeria	7	✓			✓
Niue	7	✓			✓
North Macedonia	3	✓			✓
Northern Mariana Islands	7	✓			✓
Norway	3	✓			✓
Oman	1	✓	✓	✓	✓
Pakistan	2	✓	✓	✓	✓
Palau	7	✓			✓
Panama	7	✓	✓	✓	✓
Papua New Guinea	5	✓			✓
Paraguay	7	✓	✓	✓	✓
Peru	7	✓	✓	✓	✓
Philippines, The	5	✓	✓	✓	✓
Poland	3	✓	✓	✓	✓
Portugal	3	✓	✓	✓	✓
Puerto Rico	7	✓	✓	✓	✓
Qatar	1	✓	✓	✓	✓
Reunion, Island of	7	✓			✓
Romania	3	✓			✓
Russian Federation, The	7	✓	✓	✓	✓
Rwanda	7	✓			✓
Samoa	7	✓			✓
San Marino	3	✓	✓	✓	✓

Country/Territory	Zone	DHL Epress Worldwide	DHL Epress 12:00	DHL Epress 9:00	Imports
Sao Tome & Principe	7	✓			✓
Saudi Arabia	-	✓			✓
Senegal	7	✓	✓	✓	✓
Serbia, Rep. of	3	✓		✓	✓
Seychelles	7	✓			✓
Sierra Leone	7	✓	✓	✓	✓
Singapore	5	✓	✓	✓	✓
Slovakia	3	✓	✓	✓	✓
Slovenia	3	✓	✓	✓	✓
Solomon Islands	7	✓			✓
Somalia	7	✓			✓
Somaliland, Rep. (N. Somalia)	7	✓			✓
South Africa	7	✓	✓	✓	✓
South Sudan	7	✓			✓
Spain	3	✓	✓	✓	✓
Sri Lanka	5	✓	✓	✓	✓
St. Barthelemy	7	✓			✓
St. Eustatius	7	✓			✓
St. Helena	7	✓			✓
St. Kitts	7	✓			✓
St. Lucia	7	✓			✓
St. Maarten	7	✓	✓	✓	✓
St. Vincent	7	✓			✓
Sudan	2	✓			✓
Suriname	7	✓			✓
Sweden	3	✓	✓	✓	✓
Switzerland	3	✓	✓	✓	✓
Syria	7	✓			✓
Tahiti	7	✓			✓
Taiwan	5	✓	✓	✓	✓
Tajikistan	7	✓			✓
Tanzania	7	✓	✓	✓	✓
Thailand	5	✓	✓	✓	✓
Timor-Leste	7	✓			✓
Togo	7	✓			✓
Tonga	7	✓			✓
Trinidad and Tobago	7	✓	✓	✓	✓
Tunisia	7	✓			✓
Turkey	3	✓			✓
Turkmenistan	7	✓			✓
Turks and Caicos Islands	7	✓			✓
Tuvalu	7	✓			✓
Uganda	7	✓	✓	✓	✓
Ukraine	3	✓	✓	✓	✓
United Arab Emirates	1	✓	✓	✓	✓
United Kingdom	3	✓	✓	✓	✓
United States of America	4	✓			✓
Uruguay	7	✓	✓	✓	✓
Uzbekistan	7	✓			✓
Vanuatu	7	✓			✓
Vatican City	3	✓			✓
Venezuela	7	✓			✓
Vietnam	5	✓	✓	✓	✓
Virgin Islands (British)	7	✓	✓	✓	✓
Virgin Islands (US)	7	✓			✓
Yemen, Rep. of	7	✓			✓
Zambia	7	✓	✓	✓	✓
Zimbabwe	7	✓	✓	✓	✓

doc = document contents only ✓ = document and non-document contents

For transit times and the availability of DHL Express 12:00 and DHL Express 9:00 for your origin and destination address, please refer to the DHL Capability Tool at [dct.dhl.com](http://dct.dhl.com). Pieces with a single base length up to 300cm are accepted. Additional surcharges may apply.

# ZONES AND RATES

Calculate the Price  
of Your Shipment

Optional  
Services

Surcharges

Customs  
Services

Service Capability  
and Rating Zones

Export  
Services

Import  
Services

## Export rates by zone and product

### DHL EXPRESS WORLDWIDE

Weight in kg	Zone 1	Zone 2	Zone 3	Zone 4	Zone 5	Zone 6	Zone 7
Envelopes up to 0.3kg							
0.3	285.24	304.90	338.37	358.03	383.42	394.92	403.00
Documents only up to 2kg							
0.5	285.24	304.90	338.37	358.03	383.42	394.92	403.00
1	324.48	349.96	390.35	416.94	453.86	479.21	532.35
1.5	363.72	395.02	442.33	475.85	524.30	563.50	661.70
2	402.96	440.08	494.31	534.76	594.74	647.79	791.05
Documents from 2.5kg and non-documents from 0.5kg							
0.5	308.34	351.05	389.20	436.49	457.31	473.44	527.76
1	341.85	384.56	428.44	475.73	509.29	538.07	625.94
1.5	375.36	418.07	467.68	514.97	561.27	602.70	724.12
2	408.87	451.58	506.92	554.21	613.25	667.33	822.30
2.5	442.38	485.09	546.16	593.45	665.23	731.96	920.48
3	475.89	518.60	585.40	632.69	717.21	796.59	1,018.66
3.5	509.40	552.11	624.64	671.93	769.19	861.22	1,116.84
4	542.91	585.62	663.88	711.17	821.17	925.85	1,215.02
4.5	576.42	619.13	703.12	750.41	873.15	990.48	1,313.20
5	609.93	652.64	742.36	789.65	925.13	1,055.11	1,411.38
5.5	635.32	686.15	781.60	828.89	977.11	1,114.02	1,501.49
6	660.71	719.66	820.84	868.13	1,029.09	1,172.93	1,591.60
6.5	686.10	753.17	860.08	907.37	1,081.07	1,231.84	1,681.71
7	711.49	786.68	899.32	946.61	1,133.05	1,290.75	1,771.82
7.5	736.88	820.19	938.56	985.85	1,185.03	1,349.66	1,861.93
8	762.27	853.70	977.80	1,025.09	1,237.01	1,408.57	1,952.04
8.5	787.66	887.21	1,017.04	1,064.33	1,288.99	1,467.48	2,042.15
9	813.05	920.72	1,056.28	1,103.57	1,340.97	1,526.39	2,132.26
9.5	838.44	954.23	1,095.52	1,142.81	1,392.95	1,585.30	2,222.37
10	863.83	987.74	1,134.76	1,182.05	1,444.93	1,644.21	2,312.48
11	914.61	1,054.76	1,213.24	1,260.53	1,548.89	1,762.03	2,492.70
12	965.39	1,121.78	1,291.72	1,339.01	1,652.85	1,879.85	2,672.92
13	1,016.17	1,188.80	1,370.20	1,417.49	1,756.81	1,997.67	2,853.14
14	1,066.95	1,255.82	1,448.68	1,495.97	1,860.77	2,115.49	3,033.36
15	1,117.73	1,322.84	1,527.16	1,574.45	1,964.73	2,233.31	3,213.58
16	1,168.51	1,389.86	1,605.64	1,652.93	2,068.69	2,351.13	3,393.80
17	1,219.29	1,456.88	1,684.12	1,731.41	2,172.65	2,468.95	3,574.02
18	1,270.07	1,523.90	1,762.60	1,809.89	2,276.61	2,586.77	3,754.24

Table continues overleaf

# ZONES AND RATES

Calculate the Price  
of Your Shipment

Optional  
Services

Surcharges

Customs  
Services

Service Capability  
and Rating Zones

Export  
Services

Import  
Services

## Export rates by zone and product

### DHL EXPRESS WORLDWIDE

Weight in kg	Zone 1	Zone 2	Zone 3	Zone 4	Zone 5	Zone 6	Zone 7
19	1,320.85	1,590.92	1,841.08	1,888.37	2,380.57	2,704.59	3,934.46
20	1,371.63	1,657.94	1,919.56	1,966.85	2,484.53	2,822.41	4,114.68
21	1,422.41	1,708.72	1,986.58	2,033.87	2,574.65	2,926.37	4,283.26
22	1,473.19	1,759.50	2,053.60	2,100.89	2,664.77	3,030.33	4,451.84
23	1,523.97	1,810.28	2,120.62	2,167.91	2,754.89	3,134.29	4,620.42
24	1,574.75	1,861.06	2,187.64	2,234.93	2,845.01	3,238.25	4,789.00
25	1,625.53	1,911.84	2,254.66	2,301.95	2,935.13	3,342.21	4,957.58
26	1,676.31	1,962.62	2,321.68	2,368.97	3,025.25	3,446.17	5,126.16
27	1,727.09	2,013.40	2,388.70	2,435.99	3,115.37	3,550.13	5,294.74
28	1,777.87	2,064.18	2,455.72	2,503.01	3,205.49	3,654.09	5,463.32
29	1,828.65	2,114.96	2,522.74	2,570.03	3,295.61	3,758.05	5,631.90
30	1,879.43	2,165.74	2,589.76	2,637.05	3,385.73	3,862.01	5,800.48
40	2,387.33	2,673.64	3,259.46	3,306.75	4,286.83	4,901.61	7,486.38
50	2,895.23	3,181.54	3,929.16	3,976.45	5,187.93	5,941.21	9,172.28
60	3,403.13	3,689.44	4,598.86	4,646.15	6,089.03	6,980.81	10,858.18
70	3,911.03	4,197.34	5,268.56	5,315.85	6,990.13	8,020.41	12,544.08
For each additional 0.5kg							
Above 10	25.39	33.51	39.24	39.24	51.98	58.91	90.11
Above 20	25.39	25.39	33.51	33.51	45.06	51.98	84.29
For each additional 1kg							
30.1 - 70.0	50.79	50.79	66.97	66.97	90.11	103.96	168.59
70.1 - 300.0	55.84	59.75	75.14	75.86	99.58	114.04	177.61
300.1 - 3,000*	55.84	59.75	75.14	75.86	99.58	114.04	177.61

**DHL Express 12:00** – Guaranteed delivery before 12:00 on the next possible working day to over 144 countries worldwide.

Add SAR 25 to the DHL Express Worldwide prices.

**DHL Express 9:00 (10:30 to the USA)** – Guaranteed delivery before 9:00 on the next possible working day to over 90 countries worldwide. Add SAR 125 to the DHL Express Worldwide prices.

Weights are rounded up to the nearest 0.5kg for shipments up to 30kg, and to the nearest 1kg thereafter.

Rates are in SAR and exclude customs duties, taxes, clearance-related charges, VAT and all surcharges.

Terms and conditions apply – see [mydhl.express.dhl](https://mydhl.express.dhl) for details.

\*DHL Express does not accept shipments exceeding 3,000kg, or containing pieces exceeding 1,000kg or 300cm in length, and/or not meeting DHL standards for packing. Refer to our Packing Guide on [mydhl.express.dhl](https://mydhl.express.dhl). These network restrictions are subject to change with 30 days' notice.

# ZONES AND RATES

Calculate the Price  
of Your Shipment

Optional  
Services

Surcharges

Customs  
Services

Service Capability  
and Rating Zones

Export  
Services

Import  
Services

## Import rates by zone and product

### DHL EXPRESS WORLDWIDE IMPORT

Weight in kg	Zone 1	Zone 2	Zone 3	Zone 4	Zone 5	Zone 6	Zone 7
Documents only up to 2kg							
0.5	285.24	304.90	338.37	358.03	383.42	394.92	403.00
1	324.48	349.96	390.35	416.94	453.86	479.21	532.35
1.5	363.72	395.02	442.33	475.85	524.30	563.50	661.70
2	402.96	440.08	494.31	534.76	594.74	647.79	791.05
Documents from 2.5kg and non-documents from 0.5kg							
0.5	308.34	351.05	389.20	436.49	457.31	473.44	527.76
1	341.85	384.56	428.44	475.73	509.29	538.07	625.94
1.5	375.36	418.07	467.68	514.97	561.27	602.70	724.12
2	408.87	451.58	506.92	554.21	613.25	667.33	822.30
2.5	442.38	485.09	546.16	593.45	665.23	731.96	920.48
3	475.89	518.60	585.40	632.69	717.21	796.59	1,018.66
3.5	509.40	552.11	624.64	671.93	769.19	861.22	1,116.84
4	542.91	585.62	663.88	711.17	821.17	925.85	1,215.02
4.5	576.42	619.13	703.12	750.41	873.15	990.48	1,313.20
5	609.93	652.64	742.36	789.65	925.13	1,055.11	1,411.38
5.5	635.32	686.15	781.60	828.89	977.11	1,114.02	1,501.49
6	660.71	719.66	820.84	868.13	1,029.09	1,172.93	1,591.60
6.5	686.10	753.17	860.08	907.37	1,081.07	1,231.84	1,681.71
7	711.49	786.68	899.32	946.61	1,133.05	1,290.75	1,771.82
7.5	736.88	820.19	938.56	985.85	1,185.03	1,349.66	1,861.93
8	762.27	853.70	977.80	1,025.09	1,237.01	1,408.57	1,952.04
8.5	787.66	887.21	1,017.04	1,064.33	1,288.99	1,467.48	2,042.15
9	813.05	920.72	1,056.28	1,103.57	1,340.97	1,526.39	2,132.26
9.5	838.44	954.23	1,095.52	1,142.81	1,392.95	1,585.30	2,222.37
10	863.83	987.74	1,134.76	1,182.05	1,444.93	1,644.21	2,312.48
11	914.61	1,054.76	1,213.24	1,260.53	1,548.89	1,762.03	2,492.70
12	965.39	1,121.78	1,291.72	1,339.01	1,652.85	1,879.85	2,672.92
13	1,016.17	1,188.80	1,370.20	1,417.49	1,756.81	1,997.67	2,853.14
14	1,066.95	1,255.82	1,448.68	1,495.97	1,860.77	2,115.49	3,033.36
15	1,117.73	1,322.84	1,527.16	1,574.45	1,964.73	2,233.31	3,213.58
16	1,168.51	1,389.86	1,605.64	1,652.93	2,068.69	2,351.13	3,393.80
17	1,219.29	1,456.88	1,684.12	1,731.41	2,172.65	2,468.95	3,574.02
18	1,270.07	1,523.90	1,762.60	1,809.89	2,276.61	2,586.77	3,754.24

Table continues overleaf

# ZONES AND RATES

Calculate the Price  
of Your Shipment

Optional  
Services

Surcharges

Customs  
Services

Service Capability  
and Rating Zones

Export  
Services

Import  
Services

## Import rates by zone and product

### DHL EXPRESS WORLDWIDE IMPORT

Weight in kg	Zone 1	Zone 2	Zone 3	Zone 4	Zone 5	Zone 6	Zone 7
19	1,320.85	1,590.92	1,841.08	1,888.37	2,380.57	2,704.59	3,934.46
20	1,371.63	1,657.94	1,919.56	1,966.85	2,484.53	2,822.41	4,114.68
21	1,422.41	1,708.72	1,986.58	2,033.87	2,574.65	2,926.37	4,283.26
22	1,473.19	1,759.50	2,053.60	2,100.89	2,664.77	3,030.33	4,451.84
23	1,523.97	1,810.28	2,120.62	2,167.91	2,754.89	3,134.29	4,620.42
24	1,574.75	1,861.06	2,187.64	2,234.93	2,845.01	3,238.25	4,789.00
25	1,625.53	1,911.84	2,254.66	2,301.95	2,935.13	3,342.21	4,957.58
26	1,676.31	1,962.62	2,321.68	2,368.97	3,025.25	3,446.17	5,126.16
27	1,727.09	2,013.40	2,388.70	2,435.99	3,115.37	3,550.13	5,294.74
28	1,777.87	2,064.18	2,455.72	2,503.01	3,205.49	3,654.09	5,463.32
29	1,828.65	2,114.96	2,522.74	2,570.03	3,295.61	3,758.05	5,631.90
30	1,879.43	2,165.74	2,589.76	2,637.05	3,385.73	3,862.01	5,800.48
40	2,387.33	2,673.64	3,259.46	3,306.75	4,286.83	4,901.61	7,486.38
50	2,895.23	3,181.54	3,929.16	3,976.45	5,187.93	5,941.21	9,172.28
60	3,403.13	3,689.44	4,598.86	4,646.15	6,089.03	6,980.81	10,858.18
70	3,911.03	4,197.34	5,268.56	5,315.85	6,990.13	8,020.41	12,544.08
For each additional 0.5kg							
Above 10	25.39	33.51	39.24	39.24	51.98	58.91	90.11
Above 20	25.39	25.39	33.51	33.51	45.06	51.98	84.29
For each additional 1kg							
30.1 - 70.0	50.79	50.79	66.97	66.97	90.11	103.96	168.59
70.1 - 300.0	55.84	59.75	75.14	75.86	99.58	114.04	177.61
300.1 - 3,000*	55.84	59.75	75.14	75.86	99.58	114.04	177.61

**DHL Express 12:00** – Guaranteed delivery before 12:00 on the next possible working day from over 144 countries worldwide.

Add SAR 25 to the DHL Express Worldwide Import prices.

**DHL Express 9:00 (10:30 from the USA)** – Guaranteed delivery before 9:00 on the next possible working day from over 90 countries worldwide. Add SAR 125 to the DHL Express Worldwide Import prices.

Weights are rounded up to the nearest 0.5kg for shipments up to 30kg, and to the nearest 1kg thereafter.

Rates are in SAR and exclude customs duties, taxes, clearance-related charges, VAT and all surcharges.

Terms and conditions apply – see [mydhl.express.dhl](https://mydhl.express.dhl) for details.

\*DHL Express does not accept shipments exceeding 3,000kg, or containing pieces exceeding 1,000kg or 300cm in length, and/or not meeting DHL standards for packing. Refer to our Packing Guide on [mydhl.express.dhl](https://mydhl.express.dhl). These network restrictions are subject to change with 30 days' notice.



## READY TO SHIP?



Get a quote



920003450



Chat



Feedback.SA@dhl.com



Find your nearest DHL Service Point

DHL Express  
Al Hugayet Modern Center  
King Khalid Branch Road  
Ibn Sina  
Aziziah Area  
Al-Khobar

Valid: 1st January 2023  
For public use

The information in this guide is correct as of 1st January 2023. DHL reserves the right to amend or modify any of the information at any time.

