



DHL EXPRESS

SERVICE & RATE GUIDE 2024

THAILAND

GET STARTED

[Connecting Your World](#)

[Dear Customer](#)

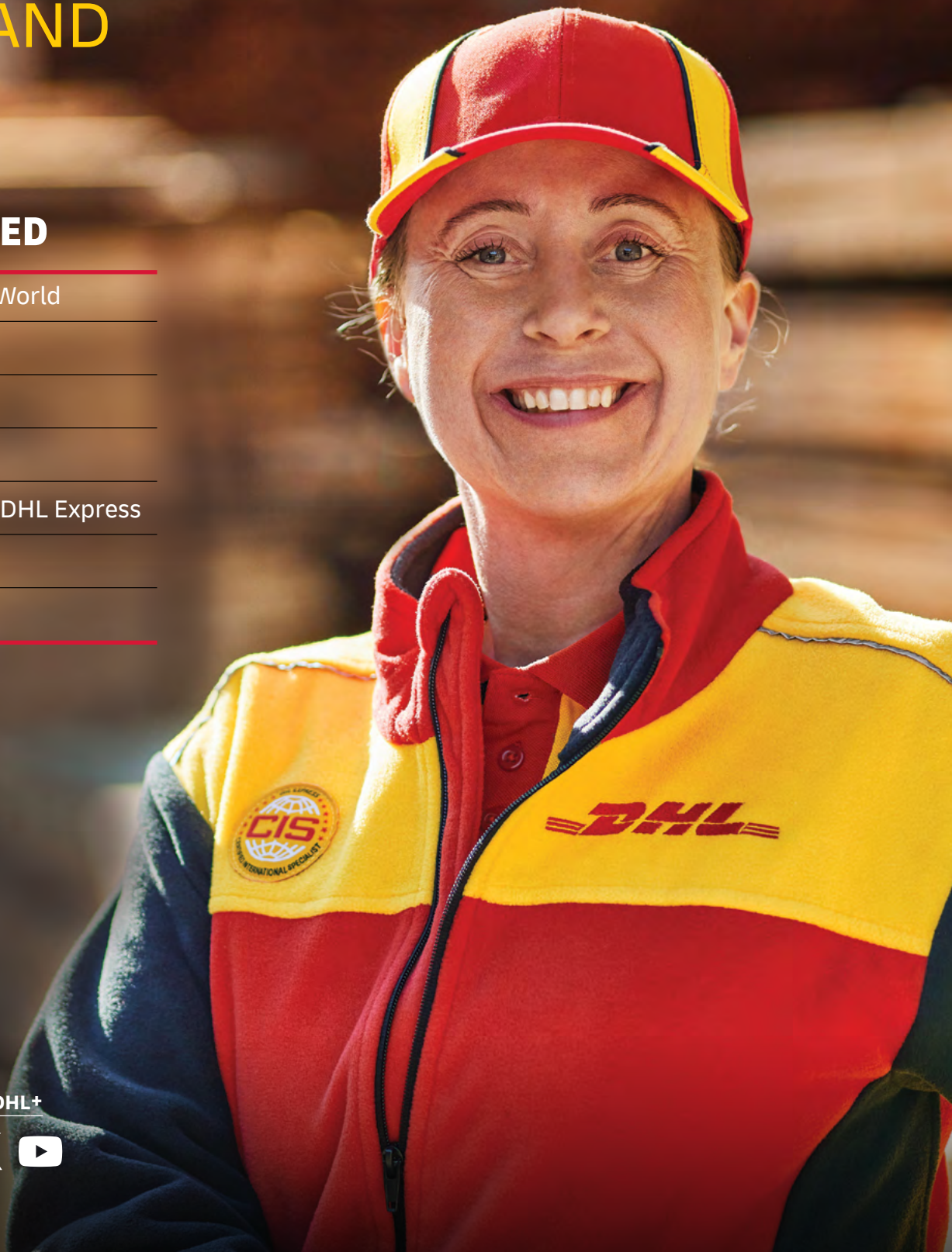
[Sustainability](#)

[Service Offering](#)

[How to Ship with DHL Express](#)

[Digitalization](#)

[Zones and Rates](#)



Ready to ship?
Get a quote from [MyDHL+](#)



CONNECTING YOUR WORLD

220
countries and
territories served



500+
airports served
worldwide



3,500
facilities

300+
aircraft

2,400+
flights per day



34,500
vehicles



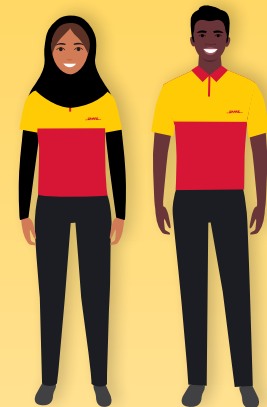
148,000
Service Points

By the year 2050, DHL Group aims to achieve net zero emissions logistics

MISSION 2050
ZERO EMISSIONS
GOGREEN

296
million

Time Definite shipments
per year



120,000
employees



415
TAPA* certifications



Figures are global and are approximate as of the end of 2022
*TAPA = Transported Asset Protection Association

DEAR CUSTOMER

Welcome to the DHL Express Service and Rate Guide for 2024. If you are reading this, it means you have a personal or business need to move something, from somewhere, to somewhere and you want it done quickly, securely and reliably. We are here to help you!

As the global market leader in Time Definite International (TDI) shipping and courier delivery, and the most international company in the world, this is what we do! We move over 1 million shipments every working day, from point A to point B in 220 countries and territories, as quickly, securely and reliably as possible and with as much transparency as possible. Over 2.5 million customers around the world put their trust in us, and our team of 120,000+ Certified International Specialists strive to exceed their expectations on every single shipment.

Global logistics appears to be finally seeing the end of COVID-driven disruptions but yet is not completely back to the 'normal' of the previous time period. Overall, the global macroeconomic situation has started to stabilize although uncertainty remains. Aviation networks remain volatile in many parts of the world and the crisis in Europe continues to add complexity to global logistics. In the face of these and other challenges, we have continued to invest in safeguarding the resilience of our global network, which enables us to provide secure and reliable supply chain solutions to support our customers.

Sustainability continues to grow in focus in all logistics conversations and I invite you to learn how our [GoGreen Plus](#) service, introduced in 2023, and our leveraging of Sustainable Aviation Fuel (SAF) can directly help make your products more environmentally friendly – a growing criterion in the purchase decision process of both individual consumers and businesses.

Digitalization retains its laser focus at DHL and we have brought to market a slew of tools to support our customers, in particular small businesses. For example, the new [My Global Trade Services](#)

[tool](#) aims to reduce customs complexity and improve getting clearance 'first time right!'. The [DHL Express Commerce tool](#) can help small businesses fast-forward taking their online sales channels international. Small business owners, let us help support your growth by enabling you to Save More as you Ship More! You could benefit from our **Dynamic Discounting** commercial options. Interested? [Let's connect!](#)

In conclusion, please use this guide to learn how DHL Express products, services and tools can meet your logistics needs. **Thank you** for trusting us to be your Logistics Partner of Choice. Tell us how we can support your growth: reach out to us on [MyDHL+](#) or by calling Customer Service on +66 2 345 5000.

Sincerely,

Herbert Vongpusanachai
Country Manager
DHL Express Thailand



Connecting Your World
► Sustainability
Service Offering
How to Ship with DHL Express
Digitalization
Zones and Rates

SUSTAINABILITY

Everything we do is to serve one purpose: **Connecting people, improving lives.** To fulfill this purpose, we need to make every dimension of our business sustainable. Our Sustainability Roadmap sets out our ambitions in three focus areas: Environment, Social and Governance (ESG). Find case studies and more details [here](#).

OUR TARGETS FOR 2030

<29 million

Reduction in our greenhouse gas emissions to under 29 million tonnes

€7 billion

Investment of €7 billion in green technologies

SBTi


Commitment to SBTi (Science-Based Targets initiatives)

30%

SAF blending of 30% for all air transport


CLEAN OPERATIONS FOR CLIMATE PROTECTION


Leader in sustainable aviation


 Our GoGreen Plus service allows you to embrace green logistics by insetting, or reducing, the CO2 within your own supply chain. We do this by using Sustainable Aviation Fuel (SAF). And that is not only good for the environment, it can benefit you by helping you to report your CO2 emissions. Here is how to get on board:

- With the GoGreen Plus **basic contract**, 30% CO2 reduction (insetting) is applied to all your express shipments via air.
- In **MyDHL+**, you can opt for GoGreen Plus and choose which shipments to invest in with SAF.
- Alternatively, choose a **customized offer** for even more CO2 reduction.

Our GoGreen Plus service is made possible following DHL's landmark collaborations with bp and Neste to supply DHL Express with SAF, which is expected to save some **two million tons** of carbon dioxide emissions over the aviation fuel cycle.

 **Green last-mile and line-haul**
Electrify **60%** of last-mile delivery vehicles and increase share of sustainable fuels in line haul to more than **30%** by 2030.

 **Carbon neutral buildings**
Design **100%** of all new buildings to be carbon neutral.

 **Green product portfolio**
Our GoGreen Plus service allows customers shipping TDI to inset their CO2 air emissions by up to **100%**.

Through collaboration, we can make our supply chains more sustainable. Read more about the Era of Sustainable Logistics.



GREAT COMPANY TO WORK FOR ALL

- Attract and retain the best talent
- Strong 'Safety First' culture
- Diverse and inclusive workplace

HIGHLY TRUSTED COMPANY

- Compliance as an integral part of daily business
- Effective governance set-up across our organization
- Like-minded and compliant suppliers and partners



SERVICE OFFERING

[Connecting Your World](#)
[Sustainability](#)
[▶ Service Offering](#)
[How to Ship with DHL Express](#)
[Digitalization](#)
[Zones and Rates](#)
[Export Services](#)
[Import Services](#)
[Domestic Services](#)
[Enabling Your Growth](#)
[Optional Services](#)
[Surcharges](#)
[Customs Services](#)

Our core services are Time Definite International (TDI) and offer you secure door-to-door delivery of goods and documents to and from virtually every country and territory. Whether you need your shipments delivered at the start, middle or end of a business day, our services offer full track-and-trace visibility so you always know where your shipments are.

EXPORT SERVICES

DHL Express Worldwide

Our most popular product, DHL Express Worldwide, offers an end of business day delivery service around the world for pieces up to 70kg and shipments up to 3,000kg.

We deliver reliably and quickly to more global destinations across a single integrated network than any other express delivery company.

DHL Express 12:00

With DHL Express 12:00 you will receive your shipments before 12 noon on the next possible business day. DHL Express 12:00 offers a money-back guarantee* and allows for pieces up to 70kg and shipments up to 300kg.

DHL Express 9:00 (10:30 to the USA)

Our premium time-definite service offers a delivery before 9:00 (10:30 to the USA) on lanes that guarantee either a next or second business day delivery. DHL Express 9:00 is offered to the majority of business centers in Europe, the Middle East, Africa, Asia and the Americas. DHL Express 9:00 features a money-back guarantee* and is suitable for pieces up to 30kg and shipments up to 300kg.

Our international services at a glance

	DHL Express Worldwide	DHL Express 12:00	DHL Express 9:00 (10:30 to the USA)
Service description	Delivery by the end of the next possible business day	Delivery before 12 noon on the next possible business day	Delivery before 9:00 (10:30 to the USA) on the next possible business day
Money-back guarantee	No	Yes*	Yes*
Countries and territories covered	More than 220	82	27
Delivery attempts	2	2	2
Maximum piece weight (not on pallet)	70kg	70kg	30kg
Maximum pieces per shipment	–	10	10
Maximum piece dimensions (L x W x H)**	120 x 80 x 80cm	120 x 80 x 80cm	120 x 80 x 80cm
Maximum pallet weight	1,000kg	Pallets not accepted	Pallets not accepted
Maximum shipment weight	3,000kg	300kg	300kg
Maximum pallet dimensions (L x W x H)	300 x 200 x 160cm	Pallets not accepted	Pallets not accepted

*Additional terms and conditions apply – see mydhl.express.dhl for details.

**A shipment is deemed unacceptable if its packaging is absent or inadequate, or if transporting the shipment would present risks of damaging equipment, other packages or injuring personnel. DHL reserves the right to either not accept or return the shipment to the shipper. These network restrictions are subject to change with 30 days' notice.

SERVICE OFFERING

Connecting Your World
Sustainability
▶ Service Offering
How to Ship with DHL Express
Digitalization
Zones and Rates

Export Services

Import Services

Domestic Services

Enabling Your Growth

Optional Services

Surcharges

Customs Services

IMPORT SERVICES

With the DHL Express Worldwide Import product, you can import shipments from over 220 countries and territories in the world. This is more than any other express delivery company can offer. What's more, customers in, say, the USA can order an import from China not just to the USA, but to any other destinations as well – we call this a Third Country shipment.

There is no need for local brokers or forwarders to get involved in any part of the process. You are in full control, and able to manage all aspects of your imports in a very simple way.

If you need a faster delivery, our DHL Express 12:00 and DHL Express 9:00 services are available for import as well. You can order an import from another country, to be delivered to your country or any other destination, by using our dedicated electronic shipping solution for imports. You will have one account number, one invoice in a single currency and a fixed price that means you know exactly what you will pay.

DOMESTIC SERVICES

If you want to ship documents or goods within your own country, we can offer our Time Definite Domestic products with delivery time guarantees of 12:00, 10:30, 9:00 or the end of the next possible business day.



SERVICE OFFERING

[Connecting Your World](#)
[Sustainability](#)
[▶ Service Offering](#)
[How to Ship with DHL Express](#)
[Digitalization](#)
[Zones and Rates](#)
[Export Services](#)
[Import Services](#)
[Domestic Services](#)
[Enabling Your Growth](#)
[Optional Services](#)
[Surcharges](#)
[Customs Services](#)

GLOBAL TRADE AND YOU

A series of crises has put international trade at the center of the debate about economic growth and resilience. What are the current prospects for globalization and trade? Is there cause for concern? Is trade still an attractive source of growth? We deep dived into the data and conducted a thorough, fact-based analysis – and the results might just surprise you. In partnership with NYU Stern's Center for the Future of Management and its DHL Initiative on Globalization, the 'DHL Trade Growth Atlas' examines global trade growth trends and the trade patterns of 173 countries worldwide that combined make up more than 99% of world trade, GDP and population. Despite recent shocks and worsening macroeconomic conditions in much of the world, the study overall gives an upbeat assessment of the prospects for future trade growth.

We know the value of understanding the long-term global trade landscape for navigating short-term shifts in economic and trade growth. We help our customers make sense of what this means for their business to maximize the enormous potential of globalization and international trade.

Trade growth expanding across a broader range of countries

New poles emerging: world trade center of gravity moving south

Shift in mix of products traded by advanced vs. emerging economies



POWERING UP THE POTENTIAL OF INTERNATIONAL E-COMMERCE

Discover and grow

Visit dhl.com/discover to learn more about how DHL helps e-commerce companies ranging from start-ups to large enterprises, advising them on how to grow internationally. Our e-commerce focussed country guides, white papers such as 'The Ultimate B2B E-Commerce Guide', customer and trend research and market intelligence tools can enable you to better understand your customers and their shipping requirements to take the next step in your e-commerce journey.

International e-commerce

We help our customers go global with ease and speed to maximize the enormous potential of international e-commerce. DHL supports our customers' international growth with:

- Global reach
- Express delivery options
- Flexible delivery options for receivers (see 'On Demand Delivery')
- Duty billing options and customs expertise
- Consultative advice for our customers on how to increase sales and grow cross-border

Fast, flexible and easy

Consumers expect everything 'on demand' – anytime, anywhere. DHL shipping options give customers a distinct competitive edge: over 90% of online consumers look at the available delivery options before going to the checkout, and their decision is influenced by delivery speed, flexibility and ease.



SERVICE OFFERING

 Connecting Your World

 Sustainability

 ► Service Offering

 How to Ship with DHL Express

 Digitalization

 Zones and Rates

 Export
Services

 Import
Services

 Domestic
Services

 Enabling Your
Growth

 Optional
Services

Surcharges

 Customs
Services

OPTIONAL SERVICES

[View charges](#)

DHL Express offers a wide range of optional services – from non-standard deliveries and billing options to climate neutral shipping.

GoGreen Plus

When selected, DHL will reduce (inset) CO2 emissions from air transport through the purchase of Sustainable Aviation Fuel (SAF). SAF can reduce lifecycle carbon emissions by up to 80% compared to traditional jet fuel. GoGreen Plus – Carbon Reduced service, supports Scope 3 emission reductions in alignment with the Science Based Target initiative. The process is audited annually by SGS (Société Générale de Surveillance) to ensure compliance with regulations and standards. Alternative reduction levels and CO2 emission reports are available on contractual basis only.

Dedicated Pickup

If your business needs a dedicated vehicle to collect unusual shipments, or a pickup outside normal business hours, we can arrange this for you.

Dedicated Delivery

On customer request, an immediate or non-routine, once-only delivery of a shipment within a normal working day or a holiday that involves a specific vehicle such as tail lift truck or more than one courier.

Saturday Pickup

In countries where Saturday is not a normal working day, DHL can arrange an ad-hoc pickup of smaller shipments up to 30kg. The service is available at selected postal locations only.

Saturday Delivery

We offer Saturday delivery services to key cities in more than 70 countries.

Receiver Paid

This service allows non-account Customers to arrange and pre-pay an import shipment door-to-door. MyDHL+ will guide the importer through the entire shipping process from the pickup at origin till delivery at destination. The service is Door-to-Door and thus equal to IMP with all its available shipping options. Import duty and tax is collected as per DTU standard process whilst the transport service is pre-paid usually via Credit Card.

Shipment Value Protection

We recommend this comprehensive protection for your valuable or personal shipments, giving you peace of mind in the unlikely event of physical damage or loss. The service is subject to specific limitations and exclusions as described in our [Terms and Conditions](#).

Extended Liability

If you are sending valuable documents such as passports, visa applications or regulatory certificates you can extend coverage and compensation beyond the DHL standard liability described in our [Terms and Conditions](#). In the event of full or partial loss to a document shipment, a fixed compensation will be paid regardless of the replacement cost of the document.

Shipment Preparation

This is a convenient, fast and reliable service for seasonal or irregular shipments that require extra resources for their preparation. DHL manages the entire process of waybill preparation, content selection, labeling and packaging, then sends the shipments to the designated addresses.

Packaging Supplies

Charges apply for all DHL standard packaging items including plastic flyers provided in bulks or stacks.

DUTY BILLING SERVICES

Duty Tax Paid

DHL can arrange for the shipper or a third party to be billed for any duties and taxes payable at destination, rather than the receiver of the shipment being billed. Charges apply whenever duties, taxes or other regulatory fees occur, and shipper has requested that those are to be billed outside of the destination country.

Duty Tax Processing: Account Customers

DHL will accelerate the customs clearance process making prompt payment of duty and tax charges relating to a shipment, while the receiver defers payment until an agreed date.

Duty Tax Processing: Non-Account Customers

This default service covers any import of a non-document shipment for which DHL has used its own credit line with Customs to advance or guarantee the payment of duties, taxes or regulatory charges on behalf of importers and consumers with whom DHL has no contract.

SERVICE OFFERING

Export
Services

Import
Services

Domestic
Services

Enabling Your
Growth

Optional
Services

Surcharges

Customs
Services

➔ OPTIONAL SERVICES

[View charges](#)

Verbal Notification

Customer Service will contact you by phone and provide verbal updates on agreed key transport events or incidents with a potential impact on transit time.

Hold for Collection

On shipper request, a shipment is held at the default DHL delivery facility at destination for consignee collection, rather than attempt a delivery at the receiver's address. The service is booked through Customer Service or supporting shipping tools. The destination will notify the receiver when and at which facility the shipment is ready to collect. A consignee cell phone number is mandatory.

Residential Address

Customers shipping to a home or private residence can activate specific delivery options by designating the delivery address as residential. For such shipments, DHL will proactively notify the receiver via email or SMS about the shipment's progress. Receivers can then select the most suitable delivery option via [On Demand Delivery](#).

Direct Signature

If you are sending sensitive documents or high value contents you can request DHL to obtain a direct signature from the consignee or a representative at the delivery address. DHL will ensure your shipment is not re-directed, or delivered at an alternative address.

Adult Signature

Delivery of a shipment to an adult. DHL will obtain a delivery signature from an adult at the stipulated delivery address.

No Signature Required

On receiver request, DHL is authorized to leave the shipment in a designated place without proof of delivery signature.

Change of Billing

This applies when a customer requests a change of defined billing information on an already issued invoice, which will result in a reissuing of the invoice and, in case of an account change, crediting of the old account and debiting of the new.

Neutral Delivery

This service allows for the delivery of any shipment, without its value being shared or exposed to the receiver. DHL will ensure any paperwork exposing the value of the goods is removed from the shipment prior to delivery.



For a full list of optional services, please visit mydhl.express.dhl.

SERVICE OFFERING

[Connecting Your World](#)

[Sustainability](#)

[▶ Service Offering](#)

[How to Ship with DHL Express](#)

[Digitalization](#)

[Zones and Rates](#)

[Export Services](#)
[Import Services](#)
[Domestic Services](#)
[Enabling Your Growth](#)
[Optional Services](#)
[Surcharges](#)
[Customs Services](#)

SURCHARGES

[View charges](#)

In order to maintain a consistently high level of service, in specific circumstances DHL Express levies a surcharge for exceptional activities, ensuring that these surcharges are fair for all of our customers.

Fuel Surcharge

The fuel surcharge for International Time Definite services will be based on the daily average spot prices for US Gulf Coast (USGC) kerosene-type jet fuel, as reported by the U.S. Department of Energy between 3rd week release of prior month to 3rd week release of actual month. For example, the daily average price for fuel from 18th April to 15th May is used to determine the applicable surcharge in June.

The fuel surcharge for Domestic services will be based on the most suitable national measure of diesel fuel prices. The surcharge is linked to the consumer price in local currency of diesel fuel inclusive of duties and taxes and published [here](#). The fuel surcharge applies to transportation charges on all services and to the following surcharges (where applicable): Saturday Delivery, Saturday Pickup, Elevated Risk, Demand Surcharge, Emergency Situation, Remote Area Delivery, Remote Area Pickup, Dedicated Pickup, Dedicated Delivery, Residential Address, Overweight Piece, Oversize Piece and Non-Stackable Pallet.

DHL reserves the right to change the fuel surcharge index and table with or without notice. Both the amount and duration of the surcharge will be determined at DHL's sole discretion.

Remote Area

This surcharge applies when a shipment is collected from or delivered to a location that is distant or difficult to serve.

Overweight Piece

A fixed surcharge is applied to every piece, including a pallet that exceeds a scale or volumetric weight of 70kg.

Oversize Piece

This fixed surcharge applies to every piece, including a pallet, with a single dimension in excess of 120cm. Does not apply to pieces already subject to Overweight Piece surcharge.

Non-Stackable Pallet

This fixed surcharge is applied to every pallet within a shipment that cannot be stacked, either on request by the shipper, or because of its shape, content or packaging. This surcharge does not apply to pieces below 30kg.

Demand Surcharge

One or more Demand Surcharges will apply to shipments during a period of high demand. A period of high demand is to be determined by DHL at its own discretion but may include a time of high demand for shipping services or a period with high operational cost. Details regarding the application of Demand Surcharges are set forth at mydhl.express.dhl and will be subject to change upon prior notice. Demand Surcharges apply cumulatively if a shipment and/or individual pieces meet more than one of the specified criteria. Demand Surcharges apply in addition to the rates and any other applicable charges.

Emergency Situation

A temporary surcharge, which allows us to cover operating cost increases due to an emergency situation out of DHL's control. Change in market dynamics and air capacity availability is reflected through regular price adjustments. The charge will be applied pro rata based on the chargeable weight (invoiced weight) of a shipment.

Excepted Quantities

This fixed surcharge is applied when the handling and transportation of shipments involves substances and commodities that are in Excepted Quantities in compliance with IATA Dangerous Goods Regulations. Contractual agreement required.

Dry Ice

A surcharge is applied when the transportation of shipments involves handling Dry Ice UN1845 as a freezing agent for non-dangerous goods such as diagnostic specimens. Contractual agreement required.

Biological Substance UN3373

Shipments containing Biological Substances Category B (UN3373) or genetically modified organisms as per UN3245 are only accepted in combination with DHL Medical Express. Contractual agreement required.

SERVICE OFFERING

[Connecting Your World](#)
[Sustainability](#)
[▶ Service Offering](#)
[How to Ship with DHL Express](#)
[Digitalization](#)
[Zones and Rates](#)
[Export Services](#)
[Import Services](#)
[Domestic Services](#)
[Enabling Your Growth](#)
[Optional Services](#)
[Surcharges](#)
[Customs Services](#)

➔ SURCHARGES

[View charges](#)

Lithium Batteries Section II

Shipping Lithium Batteries *with* equipment

A service charge will be assessed on Lithium-Ion and Lithium-Metal batteries **with** equipment. Packaging must be compliant with the appropriate IATA Packing Instruction (PI): 966 for Lithium-Ion and 969 for Lithium-Metal, Section II respectively. Accepted from approved shippers only.

Shipping Lithium Batteries *in* equipment

Shipments containing Lithium-Ion or Lithium-Metal batteries **in** equipment are accepted only in compliance with the appropriate IATA Packing Instruction (PI): 967 for Lithium-Ion and 970 for Lithium-Metal, Section II respectively.

DHL **will not accept** any shipment that is known or suspected to contain defective or damaged batteries.

Full Dangerous Goods

A surcharge is applied per shipment when the transportation of shipments involves handling substances and commodities classified as fully regulated in accordance with the IATA Dangerous Goods Regulations. Contractual agreement required.

Consumer Goods ID8000

A surcharge is applied for shipments containing consumer goods such as perfumes, aftershaves, aerosols, nail varnish and

prescription medicines as covered by the IATA ID8000 section and packed in a form intended for retail sale and shipped to private individuals (B2C). Contractual agreement required.

Address Correction

A fixed surcharge is applied per shipment when the destination address provided by the Shipper is incomplete, outdated or incorrect and DHL is subsequently unable to deliver the shipment. DHL searches and determines the correct address to complete the delivery.

Data Entry

A surcharge applies if the shipping label is not correctly completed or has not been produced electronically according to DHL standards and therefore requires manual data entry by DHL.

Security Charges

Additional surcharges may apply when shipping to or importing from a destination country where DHL is operating at elevated risk due to continuous state of war, civil unrest, or continuous threats from terrorism (**Elevated Risk**), or when shipping to or importing from a destination country that is subject to trade restrictions imposed by the UN Security Council or by national legislation such as the European Union or the US Office of Foreign Assets Control (OFAC) (**Restricted Destination**).



For a full list of surcharges, please visit mydhl.express.dhl.

SERVICE OFFERING

[Connecting Your World](#)
[Sustainability](#)
[▶ Service Offering](#)
[How to Ship with DHL Express](#)
[Digitalization](#)
[Zones and Rates](#)
[Export Services](#)
[Import Services](#)
[Domestic Services](#)
[Enabling Your Growth](#)
[Optional Services](#)
[Surcharges](#)
[Customs Services](#)

CUSTOMS SERVICES

[View charges](#)

Navigating the customs landscape is made easier by DHL's extensive knowledge and experience of both standard and non-routine customs-clearance processes. Get answers to many of your questions with our new online tool, [My Global Trade Services](#) tool, which will help you expand across borders – and concentrate on your core business.

Non-Routine Entry

Applies when shipments are subject to non-routine clearance procedures, due to their value, weight and/or commodity as defined by destination Customs Authorities. May also apply in selected countries where DHL is legally obliged to outsource formal clearance entries to a licensed third party broker.

Clearance Processing

Applies in selected countries where additional cost is incurred for importing shipments in alignment with government agency requirements.

Permits and Licenses

To accelerate import of selected controlled commodities, such as medical devices, pharmaceuticals, computer monitors, laser CD players, cosmetics, eyeglasses, food and food products, DHL is required to file specific information in order to obtain the required import permits or licenses.

Bonded Storage

Storage charges apply when the shipment cannot be released by Customs due to inaccurate or missing paperwork. Charges take effect three calendar days after the freight arrival date or broker notification, whichever is later. The charge applies to the duty and taxes payer.

Multiline Entry

Charges apply when more than nine lines are recorded on the customs clearance, for example with different commodities or different countries of manufacture.

Release to Broker

On importer request, DHL will transfer the shipment and related customs documentation to the customer's nominated broker for clearance and last mile delivery

Bonded Transit

Bonded Transit applies to both export and import shipments

whenever DHL is required to open, manage or report any form of transfer under bond.

Temporary Import Export

On customer request, DHL facilitates the temporary import/export of goods by submitting required documents such as an ATA Carnet and adhering to required clearance procedures as specified by Customs.

Preferential Origin

On shipper request, the preparation or provision of a Certificate of Origin/Proof of Preference or other similar forms by DHL to certify the goods in a particular export shipment have been produced, manufactured or processed in a particular country allowing preferential rates of duty to be claimed at destination and/or compliance with trade barriers. Common examples are EUR1 and ATR.

Export Declaration

Applies in countries where an export declaration is required for shipments containing controlled commodities or exceeding a certain value threshold or weight. Where automated export systems are available to the public, shippers may avoid the charge by submitting the export declaration online. In case of IMP billed shipments DHL will submit the export declaration in order to accelerate the export at origin and pass the charge to the payer's account.



HOW TO SHIP WITH DHL EXPRESS

Preparing Your Shipment

Packaging Your Shipment

Paying for Your Shipment

PREPARING YOUR SHIPMENT: AS EASY AS 1-2-3

1 Shipment weight

- Please weigh and measure your shipment.
- If you are sending a large but lightweight shipment, where its volumetric (dimensional) weight exceeds its actual weight, the cost of the shipment is calculated on the space your consignment takes up on the aircraft. This is a standard IATA method. To calculate the volumetric weight of your shipment, simply multiply the length by height by width in centimeters, then divide the total sum by 5,000 for each piece in the shipment.
- Any piece in the shipment may be re-weighed and/or re-measured by DHL to confirm this calculation.

2 Documentation required: waybill

- All shipments sent with DHL Express need to have a fully completed DHL waybill or label securely attached to each piece. This will enable the successful movement of your shipment through the DHL network. Each waybill or label is individually numbered to allow you to track your shipment from collection through to delivery.
- Your shipment may also need to be accompanied by customs documentation, such as a commercial or proforma invoice, as well as additional paperwork depending on the contents and value of the shipment and the country you are sending to.

3 Documentation required: invoice

- A commercial or proforma invoice is required when sending non-document shipments to countries and territories outside your origin country or customs union. This is essentially a declaration containing all the details of a transaction and is used by customs authorities to assess if duties or taxes are payable.
- A commercial invoice is used when goods are part of a commercial transaction or intended for resale.
- A proforma invoice is used when sending goods of no commercial value (for example, when sending samples).



Connecting Your World
Sustainability
Service Offering
▶ How to Ship with DHL Express
Digitalization
Zones and Rates

HOW TO SHIP WITH DHL EXPRESS

Preparing Your Shipment

Packaging Your Shipment

Paying for Your Shipment

PREPARING YOUR SHIPMENT INVOICE

This invoice template covers the key data elements required for a successful customs clearance. To help us ensure the service we provide is efficient and high-quality, visit mydhl.express.dhl for more guidance.

COMMERCIAL INVOICE								
SENDER				GENERAL INFORMATION				
Company Name: Contact Name: Building Name: Street Name & Number: Postcode: City/Country: Business/Private: Phone: Email: Tax ID/VAT Number: EORI Number:				Date: Waybill Number: Invoice Number: Shipment Reference Number: Receiver Reference Number:				
RECEIVER				BILLED TO/IMPORTER OF RECORD (IOR) (if different from Receiver)				
Company Name: Contact Name: Building Name: Street Name & Number: Postcode: City/Country: Business/Private: Phone: Email: Tax ID/VAT Number: EORI Number:				Company Name: Contact Name: Building Name: Street Name & Number: Postcode: City/Country: Business/Private: Phone: Email: Tax ID/VAT Number: EORI Number:				
OTHER REMARKS								
Please add any additional critical information or specific country clearance requirements that might be relevant e.g. bank details, special formalities etc.								
Line Number	Full Description of Goods	Commodity Code <small>(Full Import HS Code Preferred)</small>	Country of Origin	Qty	Unit Value & Currency	Sub-Total Value & Currency	Net Weight	Gross Weight
1								
2								
3								
						Total Goods Value & Currency	Total Net Weight	Total Gross Weight
Number of Invoice Line Items: Total Units: Number of Pieces:			Insurance Cost: Freight Cost: Other Costs: VALUE (for Customs Purposes): Import Customs Duties - <i>pre calculated</i> Import Taxes (VAT/GST) - <i>pre calculated</i> TOTAL (with Import Customs Duties/Taxes):					
Reason for Export: Type of Export: INCOTERM: INCOTERM Place:			Terms of Payment: Payer of GST/VAT: Duty/Tax Billing Svc:					
Carrier: Ultimate Consignee:								
Export License Number: Import License Number:								
I/we certify the information on this invoice is true and correct and that the contents of this shipment are as stated above.								
Name: _____			Title: _____			Email: _____		
Date: _____			Signature: _____					



HOW TO SHIP WITH DHL EXPRESS

 Connecting Your World

 Sustainability

 Service Offering

 ► How to Ship with DHL Express

 Digitalization

 Zones and Rates

Preparing Your Shipment

Packaging Your Shipment

Paying for Your Shipment

PACKAGING YOUR SHIPMENT

To ensure that your shipments travel safely and securely through the DHL Express global network, it is important that they are packaged and labeled correctly.

Packaging guidelines

- If you are re-using envelopes or boxes, please ensure that old labels and markings are removed
- Securely fix a waybill to each piece in your shipment. The waybill can be thought of as the shipment's airline ticket and it will delay delivery if it becomes separated from your shipment
- The barcodes on the waybill are scanned at numerous points during your shipment's journey. Please ensure the barcode is flat and not covered by tape, shrinkwrap or strapping
- Place a waybill on the top or side of each piece in your shipment and please ensure it does not overlap the corners or edges of boxes
- Use adequate protective wrapping for fragile or delicate items and ensure they are packed as far away as possible from the corners of boxes
- To prevent injury to our employees, please pay special attention to the packaging of sharp items. There should not be any possibility of the contents piercing the packaging
- Any individual pieces over 70kg should be placed on a pallet. If you are sending a multi-piece shipment, it is not necessary to place the individual pieces on a pallet unless they exceed 70kg. For example, a shipment comprising four 25kg pieces does not have to be placed on a pallet

DHL packaging

We offer a range of high-quality DHL-branded packaging items, suitable for shipping items of all shapes and sizes.

The items available include:

- Flyer bags
- Cardboard document envelopes
- Boxes in a range of sizes

For more information please refer to the Packing Guide available on mydhl.express.dhl.

Prohibited and Restricted Commodities

Prohibited Items

The following items will NOT be accepted for carriage by DHL.

This list includes items which are prohibited for carriage by any law, regulation or statute of any federal, state or local government of any country from, to or through which the items may be carried. For international carriage there may be additional prohibited items specified by the country of destination. DHL may at its sole discretion refuse to carry other items not listed below.

- Bullion (of any precious metal, mostly, but not limited to, gold or silver in mass e.g., gold bars or ingots)
- Cannabis or its derivatives including electronic cigarettes
- Cash (legal tender – bank notes, currency notes and coins)
- Complete firearms, ammunition, explosives/explosive devices including inert explosives and test pieces, air guns, replica and imitation firearms
- Human remains or ashes in any form
- Hunting (animal) trophies, animal parts such as ivory and shark's fin, animal remains or ashes, or animal by-products and derived products not intended for human consumption, prohibited for movement by the Convention on International Trade in Endangered Species of Wild Fauna and Flora (CITES) and/or local law
- Illegal goods, such as counterfeit goods and narcotics
- Live animals (including but not limited to mammals, reptiles, fish, invertebrates, amphibians, birds, insects, larvae and pupae)
- Loose lithium metal batteries under IATA PI968 section II
- Loose precious and semi-precious stones (cut or un-cut, polished or un-polished)



HOW TO SHIP WITH DHL EXPRESS

 Connecting Your World

 Sustainability

 Service Offering

 ► How to Ship with DHL Express

 Digitalization

 Zones and Rates

Preparing Your Shipment

Packaging Your Shipment

Paying for Your Shipment

Restricted Items

The following items will NOT be accepted for carriage unless otherwise agreed to by DHL. To obtain such agreement a business case will need to be conducted by DHL and the items approved for carriage will be recorded in writing with the customer.

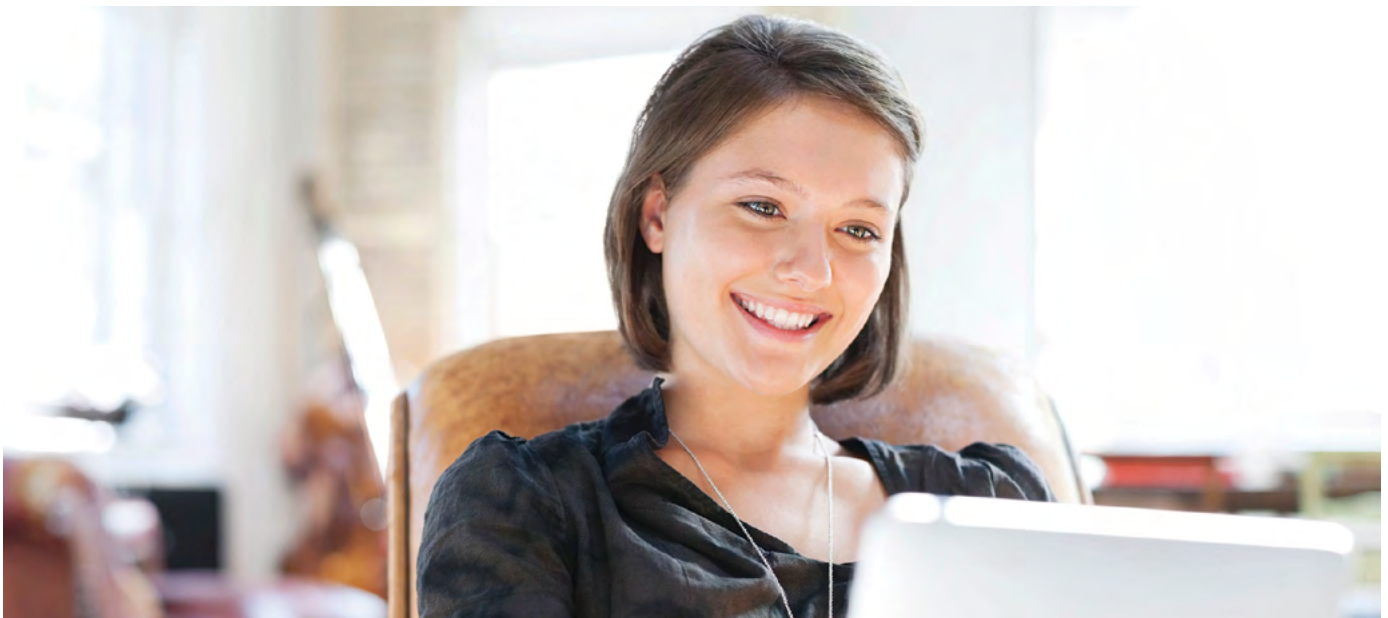
- Air guns, tasers, imitation or replica firearms, firearm parts and replica ammunition (includes rifle butts, trigger mechanisms, screws/bolts etc which are manufactured for the sole purpose of creating a functional firearm)
- Antiques and works of art with a shipment value in excess of €500,000
- Banderols/Tax stickers with a shipment value in excess of €500,000
- Cigarettes, cigars and tobacco products with a shipment value in excess of €500,000
- Commemorative coins and medals with an individual value or total shipment value of €2,000 or more are restricted for carriage
- Dangerous/hazardous goods including but not limited to perfumes, aftershaves, aerosols, flammable substances, dry ice, biological substances, UN classified dangerous goods and any goods specified as such under International Air Transport Association regulations ("IATA"), the Agreement on Dangerous Goods by Road ("ADR") or International Maritime Dangerous Goods ("IMDG") regulations
- FDA products
- Financial and monetary commodities – examples include

but are not limited to activated SIM cards for mobile phones, blank or activated credit or cash dispenser cards, blank checks, event tickets, lottery tickets, money or postal orders, pre-paid phone cards, tickets (blank stock), traveler's checks, vouchers/tokens, unused stamps etc. Applicable to all shipments valued in excess of €500,000

- Furs
- Images of Buddha
- Jewelry and watches and with individual values in excess of €5,000. **B2B:** Shipments with a total or individual maximum value of €100,000 are allowed for carriage. **B2C, C2B and C2C:** Shipments with a total or individual maximum value of €25,000 are allowed for carriage. **Non-account holders:** Shipments with a total or individual maximum value of €10,000 are allowed for carriage. (DHL Shipment Value Protection is only available for shipments with an individual maximum value of €10,000 (ten thousand EURO).
- Plants

PAYING FOR YOUR SHIPMENT

You can pay for DHL Express services either with cash, a credit card or by bank transfer. You can open an account with DHL Express to pay via bank transfer; and all account customers receive invoices on a pre-agreed basis. For more details, please get in touch with a Customer Service Advisor at your local DHL Express office or go to mydhl.express.dhl.



DIGITALIZATION

- Connecting Your World
- Sustainability
- Service Offering
- How to Ship with DHL Express
- Digitalization
- Zones and Rates

Digitalization is one of the most important trends impacting logistics, and it is one of the key pillars of DHL Group’s Strategy 2025. Through digitalization we bring benefits for our customers, our operations and our own people.

We invest continually in market-leading technologies to help our customers to manage and monitor shipments, create shipping labels, get quotes, schedule courier pickups, connect with us and more. Digitalizing our operations provides more transparency, allowing us to better anticipate and meet our customers’ needs.

MYDHL+



MyDHL+ re-imagines the way the shipping business does business, by combining the tools and services our customers use most. With its mobile friendly and intuitive interface, customers can now import, export, schedule a pickup, track shipments and pay bills more quickly than ever – all in one visit, with one password and zero headaches. MyDHL+ makes it incredibly easy to navigate the complexities of international shipping.

mydhl.express.dhl

MY GLOBAL TRADE SERVICES



My Global Trade Services (MyGTS) is your trusted advisor for cross-border trade – taking the complexity out of customs. If you are wondering what the harmonized shipping (HS) codes are for your goods, what the estimated total cost of your shipment will be, what can help get your goods cleared, and what documentation may be required, find the answers to these questions and more on our online MyGTS portal.

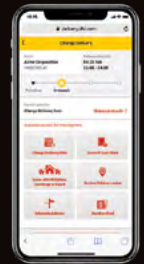
And the benefits for you? You can support clearing customs more quickly and more accurately, help avoid delays and unexpected customs or tax costs, and pre-plan your shipment journeys so that you understand potential prohibitions and restrictions.

dhl.com/express/mygts



ON DEMAND DELIVERY

DHL’s On Demand Delivery tool keeps receivers informed of shipment progress, allowing them to reschedule, reroute, release or conveniently collect from a DHL Service Point. It is an innovative, easy-to-use, mobile-friendly service, especially for residential deliveries.



ondemand.dhl.com

Designed to enhance the online shopper’s experience, the service is available globally, meaning consistent service standards and a harmonized user experience.



Scheduled delivery



Signature release/leave your signature



Alternative address



Collect from Service Point



Vacation hold



Leave with neighbor

DHL EXPRESS COMMERCE

Take your website international with DHL Express Commerce. Offer your customers all the benefits of DHL Express at your checkout in real-time. Import, manage and ship their orders quickly and efficiently with no complicated development. Add the power of DHL Express to your e-commerce business quickly and easily, giving you the competitive edge. DHL Express Commerce integrates with the biggest e-commerce platforms, including: Magento, Shopify, WooCommerce, Amazon and eBay.

DIGITALIZATION

[Connecting Your World](#)
[Sustainability](#)
[Service Offering](#)
[How to Ship with DHL Express](#)
[▶ Digitalization](#)
[Zones and Rates](#)

DHL EXPRESS MOBILE APP

The DHL Express Mobile app lets you track your shipments and manage your deliveries all in one place. You can locate the nearest DHL Service Point for parcel drop off or collection, and quickly check shipping rates too – right on your smartphone. Advanced GPS location services and camera barcode scanning are also available. Download DHL Express Mobile today, on Android or iOS.



DIGITAL ASSISTANT

Our Digital Assistant is a live chat helpdesk that offers a 24/7 service across multiple online channels and platforms, and in 41 languages, including Thai. It tracks your shipments, answers queries and directs you to FAQs.


[Chat with us now!](#)


ROBOTICS

Driven by rapid technological advancements and increasing supply chain complexity, robotics solutions are entering the logistics environment, boosting productivity and driving zero-defect processes.

Robots are adopting more roles at DHL Express, assisting workers with the most repetitive and labor-intensive tasks and freeing them up to do higher-order, customer-facing activities. Examples include the use of articulated robotic arms for sorting inbound packages to last-mile delivery routes. We have four such robots in use globally, with this number set to double soon.

Our robots help get couriers out on the road faster – which means your parcels get delivered faster.

DIGITAL TRUST

Logistics requires transferring data and content around the world and we embrace a responsibility to do this securely. Our standards led by our Binding Corporate Rules and by our [Data Privacy Policy](#) apply throughout the DHL Group and are approved by the Supervisory Authorities. We maintain a comprehensive [Information Security](#) and [Data Protection](#) approach based on ISO/IEC 27001:2013 and GDPR, to ensure a high standard when managing customer information assets and personal data. We aim to provide a rapid response to any security incident via our 24x7 Cyber Defence Centre (CDC) with global coverage and our global DPO community.

DHL Group acts as controller in respect of any personal data it receives from customers and holds to effectively provide transportation services and in regard to the delivery of any shipments or documents that it processes to perform its contractual obligations. DHL Group will act as a data controller when an individual is executing their rights under privacy legislations.

ZONES AND RATES

Calculate the Price
of Your Shipment

Optional
Services

Surcharges

Customs
Services

Service Capability
and Rating Zones

Export
Services

Import
Services

CALCULATE THE PRICE OF YOUR SHIPMENT



Determine which zone your destination is in and whether yours is a document or non-document shipment.



Is your shipment international or domestic and how quickly do you want it to arrive?



Based on weight, zone and speed, confirm your base price for exports and imports.



Add any optional services and check if any surcharges apply.

Base price + Optional services + Surcharges = Total price

OPTIONAL SERVICES

[View explanation](#)

Optional services	Charging method	Charge
GoGreen Plus	Per shipment	Minimum THB 8.5 per kg
Dedicated Pickup	Per shipment	THB 18 per kg with minimum of THB 1,700
Dedicated Delivery	Per shipment	THB 18 per kg with minimum of THB 1,700
Saturday Pickup	Per shipment	THB 740
Saturday Delivery	Per shipment	THB 740
Receiver Paid	No charge	No charge, IMP standard rates apply
Shipment Value Protection	By shipment value	Export: THB 450 or 2% of shipment value if higher Import: THB 450 or 1% of shipment value if higher
Extended Liability	Per shipment	THB 170
Shipment Preparation	Per shipment	THB 960
Packaging Supplies		
Plastic Flyer Stack	Per stack	THB 350 per stack (100 flyers)
Bulk Packaging	Per stack	Variable
Duty Billing Services		
Duty Tax Paid	% of fiscal charges	2% of fiscal charges with minimum of THB 690
Duty Tax Processing: Account Customers	% of fiscal charges	2% of fiscal charges with minimum of THB 200, capped at THB 2,000
Duty Tax Processing: Non-Account Customers	% of fiscal charges	2% of fiscal charges with minimum of THB 200, capped at THB 2,000
Verbal Notification	Per shipment	THB 100
Hold for Collection	No charge	No charge
Residential Address	Per shipment	THB 110
Direct Signature	Per shipment	THB 200
Adult Signature	Per shipment	THB 200
No Signature Required	No charge	No charge
Change of Billing	Per invoice	THB 460
Neutral Delivery	Per shipment	THB 300

For a full list of optional services, please visit our website at mydhl.express.dhl.

ZONES AND RATES

[Calculate the Price of Your Shipment](#)
[Optional Services](#)
[Surcharges](#)
[Customs Services](#)
[Service Capability and Rating Zones](#)
[Export Services](#)
[Import Services](#)

SURCHARGES

[View explanation](#)

Surcharges	Charging method	Charge
Fuel Surcharge	Per shipment	Percentage of transportation and additional charges, as per index; details here
Remote Area Delivery	Per shipment	THB 19 per kg THB 800 minimum per shipment
Remote Area Pickup	Per shipment	THB 19 per kg THB 800 minimum per shipment
Additional Handling		
Overweight Piece	Per piece	THB 3,300
Oversize Piece	Per piece	THB 1,900
Non-Stackable Pallet	Per piece	THB 10,000
Demand Surcharge	Variable by lane and weight	Variable by lane and weight
Excepted Quantities		
Dangerous Goods		
Excepted Quantities	Per shipment	THB 400
Dry Ice (UN1845)	Per shipment	THB 460
Lithium Batteries with equipment		
Lithium Ion PI966, Section II	Per shipment	THB 250
Lithium Metal PI969, Section II	Per shipment	THB 200
Lithium Batteries in equipment	No charge	No charge
Full Dangerous Goods	Per shipment	THB 3,500
Consumer Goods ID8000	Per shipment	THB 1,000
Address Correction	Per shipment	THB 420
Data Entry	Per shipment	THB 380
Security Charges		
Elevated Risk	Per shipment	THB 1,200
Restricted Destination	Per shipment	THB 1,200

For a full list of surcharges, please visit mydhl.express.dhl.

ZONES AND RATES

Calculate the Price
of Your Shipment

Optional
Services

Surcharges

Customs
Services

Service Capability
and Rating Zones

Export
Services

Import
Services

CUSTOMS SERVICES

[View explanation](#)

Customs services	Charging method	Charge
Non-Routine Entry	Per shipment	THB 350
Clearance Processing	Per shipment	THB 385
Permits and Licenses	Per shipment	THB 1,600 plus cost of certificate
Bonded Storage	Per shipment, per day after three calendar days	THB 230 per shipment and THB 3.3 per kg (both per day after three calendar days)
Multiline Entry	Rate per line, after nine lines	THB 20, capped at THB 2,000
Release to Broker	Per shipment	THB 400
Bonded Transit	Per shipment	THB 600
Temporary Import Export	Per shipment	THB 600
Preferential Origin	Per shipment	THB 400
Export Declaration	Per shipment	THB 300 for shipment values exceeding THB 500,000 declared value

For a full list of customs services, please visit mydhl.express.dhl.



ZONES AND RATES

- Connecting Your World
- Sustainability
- Service Offering
- How to Ship with DHL Express
- Digitalization
- ▶ Zones and Rates

- Calculate the Price of Your Shipment
- Optional Services
- Surcharges
- Customs Services
- Service Capability and Rating Zones
- Export Services
- Import Services

SERVICE CAPABILITY AND RATING ZONES

Country/Territory	Zone	DHL Express Worldwide	DHL Express 12:00	DHL Express 9:00	Imports
Afghanistan	9	✓			✓
Albania	8	✓			✓
Algeria	9	✓			✓
American Samoa	9	✓			✓
Andorra	7	✓			✓
Angola	9	✓	✓		✓
Anguilla	9	✓			✓
Antigua	9	✓			✓
Argentina	9	✓	✓		✓
Armenia	8	✓			✓
Aruba	9	✓			✓
Australia	3	✓	✓	✓	✓
Austria	7	✓	✓		✓
Azerbaijan	8	✓			✓
Bahamas	9	✓			✓
Bahrain	5	✓	✓		✓
Bangladesh	4	✓			✓
Barbados	9	✓			✓
Belarus	9	✓			✓
Belgium	7	✓	✓	✓	✓
Belize	9	✓			✓
Benin	9	✓			✓
Bermuda	9	✓			✓
Bhutan	8	✓			✓
Bolivia	9	✓			✓
Bonaire	9	✓			✓
Bosnia and Herzegovina	8	✓			✓
Botswana	9	✓			✓
Brazil	9	✓	✓		✓
Brunei	3	✓			✓
Bulgaria	7	✓	✓		✓
Burkina Faso	9	✓			✓
Burundi	9	✓			✓
Cambodia	3	✓	doc		✓
Cameroon	9	✓			✓
Canada	6	✓	✓		✓
Canary Islands, The	8	✓			✓
Cape Verde	9	✓			✓
Cayman Islands	9	✓			✓
Central African Republic	9	✓			✓
Chad	9	✓			✓
Chile	9	✓	✓		✓
China, People's Republic 1	2	✓	doc		✓
China, People's Republic 2	3	✓	doc		✓
Colombia	9	✓	doc	✓	✓
Comoros	9	✓			✓
Congo	9	✓			✓
Congo, Democratic Rep. of	9	✓	doc		✓
Cook Islands	9	✓			✓
Costa Rica	9	✓			✓
Cote d'Ivoire	9	✓	doc		✓
Croatia	7	✓			✓
Cuba	9	✓			✓
Curacao	9	✓			✓
Cyprus	7	✓	doc		✓
Czech Republic, The	7	✓	✓		✓
Denmark	7	✓	✓	✓	✓
Djibouti	9	✓			✓
Dominica	9	✓			✓
Dominican Republic	9	✓			✓

Country/Territory	Zone	DHL Express Worldwide	DHL Express 12:00	DHL Express 9:00	Imports
Ecuador	9	✓			✓
Egypt	9	✓			✓
El Salvador	9	✓			✓
Eritrea	9	✓			✓
Estonia	7	✓			✓
Eswatini	9	✓			✓
Ethiopia	9	✓			✓
Falkland Islands	9	✓			✓
Faroe Islands	9	✓			✓
Fiji	9	✓			✓
Finland	7	✓	✓		✓
France	7	✓	✓	✓	✓
French Guiana	9	✓			✓
Gabon	9	✓	doc		✓
Gambia	9	✓			✓
Georgia	9	✓			✓
Germany	7	✓	✓	✓	✓
Ghana	9	✓			✓
Gibraltar	8	✓			✓
Greece	7	✓	doc		✓
Greenland	9	✓			✓
Grenada	9	✓			✓
Guadeloupe	9	✓			✓
Guam	9	✓			✓
Guatemala	9	✓	doc		✓
Guernsey	8	✓	doc	doc	✓
Guinea Republic	9	✓			✓
Guinea-Bissau	9	✓			✓
Guinea-Equatorial	9	✓			✓
Guyana (British)	9	✓			✓
Haiti	9	✓			✓
Honduras	9	✓			✓
Hong Kong SAR China	1	✓	✓	✓	✓
Hungary	7	✓	✓		✓
Iceland	9	✓			✓
India	4	✓	doc		✓
Indonesia	3	✓			✓
Iran, Islamic Rep. of	9	✓			✓
Iraq	9	✓			✓
Ireland, Rep. of	7	✓	✓		✓
Israel	8	✓			✓
Italy	7	✓	✓	✓	✓
Jamaica	9	✓			✓
Japan	4	✓	✓		✓
Jersey	8	✓			✓
Jordan	8	✓	doc		✓
Kazakhstan	9	✓			✓
Kenya	9	✓	✓		✓
Kiribati	9	✓			✓
Korea, D.P.R. of (North)	9	✓			✓
Korea, Rep. of (South)	4	✓	✓		✓
Kosovo	8	✓			✓
Kuwait	5	✓	✓		✓
Kyrgyzstan	9	✓			✓
Lao P.D.R.	3	✓			✓
Latvia	7	✓			✓
Lebanon	9	✓	doc		✓
Lesotho	9	✓			✓
Liberia	9	✓			✓

doc = document contents only ✓ = document and non-document contents

Continues overleaf

For transit times and the availability of DHL Express 12:00 and DHL Express 9:00 for your origin and destination address, please refer to the DHL Capability Tool at dct.dhl.com. Pieces with a single base length up to 300cm are accepted. Additional surcharges may apply.

- Connecting Your World
- Sustainability
- Service Offering
- How to Ship with DHL Express
- Digitalization
- ▶ Zones and Rates**

ZONES AND RATES

- Calculate the Price of Your Shipment
- Optional Services
- Surcharges
- Customs Services
- Service Capability and Rating Zones
- Export Services
- Import Services

➔ SERVICE CAPABILITY AND RATING ZONES

Country/Territory	Zone	DHL Express Worldwide	DHL Express 12:00	DHL Express 9:00	Imports
Libya	9	✓			✓
Liechtenstein	7	✓			✓
Lithuania	7	✓	doc		✓
Luxembourg	7	✓	✓	doc	✓
Macau SAR China	1	✓			✓
Madagascar	9	✓	doc		✓
Malawi	9	✓			✓
Malaysia	1	✓	✓		✓
Maldives	9	✓			✓
Mali	9	✓			✓
Malta	7	✓			✓
Marshall Islands	9	✓			✓
Martinique	9	✓			✓
Mauritania	9	✓			✓
Mauritius	9	✓			✓
Mayotte	9	✓			✓
Mexico	6	✓			✓
Micronesia, Fed. States of	9	✓			✓
Moldova, Rep. of	9	✓			✓
Monaco	7	✓			✓
Mongolia	9	✓			✓
Montenegro, Rep. of	8	✓			✓
Montserrat	9	✓			✓
Morocco	9	✓			✓
Mozambique	9	✓			✓
Myanmar	3	✓			✓
Namibia	9	✓			✓
Nauru, Rep. of	9	✓			✓
Nepal	8	✓			✓
Netherlands, The	7	✓	✓	✓	✓
Nevis	9	✓			✓
New Caledonia	9	✓			✓
New Zealand	3	✓			✓
Nicaragua	9	✓			✓
Niger	9	✓			✓
Nigeria	9	✓			✓
Niue	9	✓			✓
North Macedonia	8	✓			✓
Northern Mariana Islands	9	✓			✓
Norway	8	✓	✓		✓
Oman	5	✓			✓
Pakistan	8	✓	doc		✓
Palau	9	✓			✓
Panama	9	✓			✓
Papua New Guinea	8	✓			✓
Paraguay	9	✓	✓		✓
Peru	9	✓	doc		✓
Philippines, The	3	✓	✓	✓	✓
Poland	7	✓	✓		✓
Portugal	7	✓	✓		✓
Puerto Rico	9	✓			✓
Qatar	5	✓	doc		✓
Reunion, Island of	9	✓			✓
Romania	7	✓			✓
Russian Federation, The	9	✓			✓
Rwanda	9	✓			✓
Samoa	9	✓			✓
San Marino	7	✓			✓

Country/Territory	Zone	DHL Express Worldwide	DHL Express 12:00	DHL Express 9:00	Imports
Sao Tome & Principe	9	✓			✓
Saudi Arabia	5	✓	✓		✓
Senegal	9	✓			✓
Serbia, Rep. of	8	✓			✓
Seychelles	9	✓			✓
Sierra Leone	9	✓			✓
Singapore	1	✓	✓	✓	✓
Slovakia	7	✓	✓		✓
Slovenia	7	✓	✓		✓
Solomon Islands	9	✓			✓
Somalia	9	✓			✓
Somaliland, Rep. (N. Somalia)	9	✓			✓
South Africa	8	✓	✓	✓	✓
South Sudan	9	✓			✓
Spain	7	✓	✓	doc	✓
Sri Lanka	4	✓			✓
St. Barthelemy	9	✓			✓
St. Eustatius	9	✓			✓
St. Helena	9	✓			✓
St. Kitts	9	✓			✓
St. Lucia	9	✓			✓
St. Maarten	9	✓			✓
St. Vincent	9	✓			✓
Sudan	9	✓			✓
Suriname	9	✓			✓
Sweden	7	✓	✓	✓	✓
Switzerland	7	✓	✓	doc	✓
Syria	9	✓			✓
Tahiti	9	✓			✓
Taiwan, China	3	✓	✓	✓	✓
Tajikistan	9	✓			✓
Tanzania	9	✓			✓
Thailand	0	✓			✓
Timor-Leste	9	✓			✓
Togo	9	✓			✓
Tonga	9	✓			✓
Trinidad and Tobago	9	✓			✓
Tunisia	9	✓			✓
Türkiye	8	✓			✓
Turkmenistan	9	✓			✓
Turks and Caicos Islands	9	✓			✓
Tuvalu	9	✓			✓
Uganda	9	✓			✓
Ukraine	9	✓			✓
United Arab Emirates	5	✓	✓		✓
United Kingdom	7	✓	✓	✓	✓
United States of America	6	✓	✓	10:30	✓
Uruguay	9	✓			✓
Uzbekistan	9	✓			✓
Vanuatu	9	✓			✓
Vatican City	7	✓			✓
Venezuela	9	✓			✓
Vietnam	3	✓	doc		✓
Virgin Islands (British)	9	✓			✓
Virgin Islands (US)	9	✓			✓
Yemen, Rep. of	9	✓			✓
Zambia	9	✓			✓
Zimbabwe	9	✓			✓

doc = document contents only ✓ = document and non-document contents

For transit times and the availability of DHL Express 12:00 and DHL Express 9:00 for your origin and destination address, please refer to the DHL Capability Tool at dct.dhl.com. Pieces with a single base length up to 300cm are accepted. Additional surcharges may apply.

- Connecting Your World
- Sustainability
- Service Offering
- How to Ship with DHL Express
- Digitalization
- ▶ Zones and Rates

ZONES AND RATES

Calculate the Price of Your Shipment Optional Services Surcharges Customs Services Service Capability and Rating Zones Export Services Import Services

Export rates by zone and product

DHL EXPRESS WORLDWIDE

Weight in kg	Zone 1	Zone 2	Zone 3	Zone 4	Zone 5	Zone 6	Zone 7	Zone 8	Zone 9
Documents only up to 2kg									
0.5	934	935	1,158	1,267	2,288	1,499	1,625	2,312	3,269
1	1,436	1,438	1,805	1,935	3,571	2,326	2,509	3,609	4,952
1.5	2,020	2,023	2,567	2,681	4,789	3,152	3,476	4,840	6,633
2	2,604	2,608	3,329	3,427	6,007	3,978	4,443	6,071	8,314
Documents from 2.5kg and non-documents from 0.5kg									
0.5	2,334	2,335	2,493	2,532	3,806	2,658	3,043	4,000	5,241
1	2,620	2,621	2,917	2,962	4,740	3,120	3,641	4,982	6,379
1.5	2,904	2,905	3,341	3,391	5,663	3,610	4,234	5,952	7,547
2	3,188	3,189	3,765	3,820	6,586	4,100	4,827	6,922	8,715
2.5	3,543	3,544	4,189	4,249	7,509	4,600	5,421	7,892	9,883
3	3,818	3,819	4,477	4,545	8,319	4,973	6,013	8,743	10,839
3.5	4,093	4,094	4,765	4,841	9,129	5,346	6,605	9,594	11,795
4	4,368	4,369	5,053	5,137	9,939	5,719	7,197	10,445	12,751
4.5	4,643	4,644	5,341	5,433	10,749	6,092	7,789	11,296	13,707
5	4,918	4,919	5,629	5,729	11,559	6,465	8,381	12,147	14,663
5.5	5,053	5,055	5,921	6,047	12,213	6,836	8,851	12,834	15,384
6	5,188	5,191	6,213	6,365	12,867	7,207	9,321	13,521	16,105
6.5	5,323	5,327	6,505	6,683	13,521	7,578	9,791	14,208	16,826
7	5,458	5,463	6,797	7,001	14,175	7,949	10,261	14,895	17,547
7.5	5,593	5,599	7,089	7,319	14,829	8,320	10,731	15,582	18,268
8	5,728	5,735	7,381	7,637	15,483	8,691	11,201	16,269	18,989
8.5	5,863	5,871	7,673	7,955	16,137	9,062	11,671	16,956	19,710
9	5,998	6,007	7,965	8,273	16,791	9,433	12,141	17,643	20,431
9.5	6,133	6,143	8,257	8,591	17,445	9,804	12,611	18,330	21,152
10	6,268	6,279	8,549	8,909	18,099	10,175	13,081	19,017	21,873
11	6,316	6,329	8,875	9,207	18,477	10,445	13,457	19,415	22,681
12	6,364	6,379	9,201	9,505	18,855	10,715	13,833	19,813	23,489
13	6,412	6,429	9,527	9,803	19,233	10,985	14,209	20,211	24,297
14	6,460	6,479	9,853	10,101	19,611	11,255	14,585	20,609	25,105
15	6,508	6,529	10,179	10,399	19,989	11,525	14,961	21,007	25,913
16	6,556	6,579	10,505	10,697	20,367	11,795	15,337	21,405	26,721
17	6,604	6,629	10,831	10,995	20,745	12,065	15,713	21,803	27,529
18	6,652	6,679	11,157	11,293	21,123	12,335	16,089	22,201	28,337

Continues overleaf

ZONES AND RATES

Calculate the Price
of Your Shipment

Optional
Services

Surcharges

Customs
Services

Service Capability
and Rating Zones

Export
Services

Import
Services

Export rates by zone and product

🔗 DHL EXPRESS WORLDWIDE

Weight in kg	Zone 1	Zone 2	Zone 3	Zone 4	Zone 5	Zone 6	Zone 7	Zone 8	Zone 9
19	6,700	6,729	11,483	11,591	21,501	12,605	16,465	22,599	29,145
20	6,748	6,779	11,809	11,889	21,879	12,875	16,841	22,997	29,953
21	7,030	7,063	12,315	12,405	22,745	13,507	17,591	23,863	31,119
22	7,312	7,347	12,821	12,921	23,611	14,139	18,341	24,729	32,285
23	7,594	7,631	13,327	13,437	24,477	14,771	19,091	25,595	33,451
24	7,876	7,915	13,833	13,953	25,343	15,403	19,841	26,461	34,617
25	8,158	8,199	14,339	14,469	26,209	16,035	20,591	27,327	35,783
26	8,440	8,483	14,845	14,985	27,075	16,667	21,341	28,193	36,949
27	8,722	8,767	15,351	15,501	27,941	17,299	22,091	29,059	38,115
28	9,004	9,051	15,857	16,017	28,807	17,931	22,841	29,925	39,281
29	9,286	9,335	16,363	16,533	29,673	18,563	23,591	30,791	40,447
30	9,568	9,619	16,869	17,049	30,539	19,195	24,341	31,657	41,613
40	10,800	11,200	19,840	19,880	35,200	25,160	28,800	35,600	45,680
50	13,500	14,000	24,800	24,850	44,000	31,450	36,000	44,500	57,100
60	16,200	16,800	29,760	29,820	52,800	37,740	43,200	53,400	68,520
70	18,900	19,600	34,720	34,790	61,600	44,030	50,400	62,300	79,940
For each additional 0.5kg									
Above 10	24	25	163	149	189	135	188	199	404
Above 20	141	142	253	258	433	316	375	433	583
Multiplier rate per 1kg from 30.1kg									
30.1 - 70.0	270	280	496	497	880	629	720	890	1,142
70.1 - 300.0	216	240	496	497	870	629	660	882	1,142
300.1 - 3,000*	216	240	524	525	868	679	687	880	1,142

DHL Express 12:00 – Guaranteed delivery before 12:00 on the next possible working day to over 82 countries worldwide.

Add THB 200 to the DHL Express Worldwide prices.

DHL Express 9:00 (10:30 to the USA) – Guaranteed delivery before 9:00 on the next possible working day to over 27 countries worldwide. Add THB 1,350 to the DHL Express Worldwide prices.

Rates are rounded up to the nearest 0.5kg for shipments up to 30kg, and to the nearest 1kg thereafter. Each piece weight is rounded up to the nearest 0.5kg.

Rates are in THB and exclude customs duties, taxes, clearance-related charges, VAT and all surcharges. Terms and conditions apply – see mydhl.express.dhl for details.

*DHL Express does not accept shipments exceeding 3,000kg, or containing pieces exceeding 1,000kg or 300cm in length, and/or not meeting DHL standards for packing. Refer to our Packing Guide on mydhl.express.dhl. These network restrictions are subject to change with 30 days' notice.

- Connecting Your World
- Sustainability
- Service Offering
- How to Ship with DHL Express
- Digitalization
- ▶ Zones and Rates

ZONES AND RATES

- Calculate the Price of Your Shipment
- Optional Services
- Surcharges
- Customs Services
- Service Capability and Rating Zones
- Export Services
- Import Services

Import rates by zone and product

DHL EXPRESS WORLDWIDE IMPORT

Weight in kg	Zone 1	Zone 2	Zone 3	Zone 4	Zone 5	Zone 6	Zone 7	Zone 8	Zone 9
Documents only up to 2kg									
0.5	1,076	1,077	1,336	1,463	2,630	1,730	1,875	2,666	3,761
1	1,662	1,762	2,086	2,232	4,115	2,686	2,897	4,171	5,708
1.5	2,339	2,470	2,970	3,098	5,525	3,642	4,021	5,600	7,655
2	3,016	3,178	3,854	3,964	6,935	4,598	5,145	7,029	9,602
Documents from 2.5kg and non-documents from 0.5kg									
0.5	2,709	2,710	2,895	2,936	4,576	3,088	3,530	4,638	6,068
1	3,039	3,040	3,385	3,433	5,692	3,620	4,221	5,769	7,390
1.5	3,369	3,370	3,875	3,929	6,798	4,188	4,910	6,889	8,736
2	3,699	3,700	4,365	4,425	7,904	4,756	5,599	8,009	10,082
2.5	4,108	4,110	4,855	4,922	9,003	5,330	6,288	9,123	11,426
3	4,420	4,423	5,185	5,258	9,975	5,758	6,965	10,108	12,531
3.5	4,732	4,736	5,515	5,594	10,947	6,186	7,642	11,093	13,636
4	5,044	5,049	5,845	5,930	11,919	6,614	8,319	12,078	14,741
4.5	5,356	5,362	6,175	6,266	12,891	7,042	8,996	13,063	15,846
5	5,668	5,675	6,505	6,602	13,863	7,470	9,673	14,048	16,951
5.5	5,824	5,861	6,842	6,972	14,646	7,896	10,219	14,842	17,785
6	5,980	6,047	7,179	7,342	15,429	8,322	10,765	15,636	18,619
6.5	6,136	6,233	7,516	7,712	16,212	8,748	11,311	16,430	19,453
7	6,292	6,419	7,853	8,082	16,995	9,174	11,857	17,224	20,287
7.5	6,448	6,605	8,190	8,452	17,778	9,600	12,403	18,018	21,121
8	6,604	6,791	8,527	8,822	18,561	10,026	12,949	18,812	21,955
8.5	6,760	6,977	8,864	9,192	19,344	10,452	13,495	19,606	22,789
9	6,916	7,163	9,201	9,562	20,127	10,878	14,041	20,400	23,623
9.5	7,072	7,349	9,538	9,932	20,910	11,304	14,587	21,194	24,457
10	7,228	7,535	9,875	10,302	21,693	11,730	15,133	21,988	25,291
11	7,280	7,589	10,251	10,646	22,141	12,044	15,567	22,442	26,225
12	7,332	7,643	10,627	10,990	22,589	12,358	16,001	22,896	27,159
13	7,384	7,697	11,003	11,334	23,037	12,672	16,435	23,350	28,093
14	7,436	7,751	11,379	11,678	23,485	12,986	16,869	23,804	29,027
15	7,488	7,805	11,755	12,022	23,933	13,300	17,303	24,258	29,961
16	7,540	7,859	12,131	12,366	24,381	13,614	17,737	24,712	30,895
17	7,592	7,913	12,507	12,710	24,829	13,928	18,171	25,166	31,829
18	7,644	7,967	12,883	13,054	25,277	14,242	18,605	25,620	32,763

Continues overleaf

ZONES AND RATES

Calculate the Price
of Your Shipment

Optional
Services

Surcharges

Customs
Services

Service Capability
and Rating Zones

Export
Services

Import
Services

Import rates by zone and product

➔ DHL EXPRESS WORLDWIDE IMPORT

Weight in kg	Zone 1	Zone 2	Zone 3	Zone 4	Zone 5	Zone 6	Zone 7	Zone 8	Zone 9
19	7,696	8,021	13,259	13,398	25,725	14,556	19,039	26,074	33,697
20	7,748	8,075	13,635	13,742	26,173	14,870	19,473	26,528	34,631
21	8,106	8,409	14,251	14,376	27,227	15,638	20,403	27,638	36,047
22	8,464	8,743	14,867	15,010	28,281	16,406	21,333	28,748	37,463
23	8,822	9,077	15,483	15,644	29,335	17,174	22,263	29,858	38,879
24	9,180	9,411	16,099	16,278	30,389	17,942	23,193	30,968	40,295
25	9,538	9,745	16,715	16,912	31,443	18,710	24,123	32,078	41,711
26	9,896	10,079	17,331	17,546	32,497	19,478	25,053	33,188	43,127
27	10,254	10,413	17,947	18,180	33,551	20,246	25,983	34,298	44,543
28	10,612	10,747	18,563	18,814	34,605	21,014	26,913	35,408	45,959
29	10,970	11,081	19,179	19,448	35,659	21,782	27,843	36,518	47,375
30	11,328	11,415	19,795	20,082	36,713	22,550	28,773	37,628	48,791
40	12,360	12,840	22,360	22,760	39,520	28,840	32,680	39,880	51,360
50	15,450	16,050	27,950	28,450	49,400	36,050	40,850	49,850	64,200
60	18,540	19,260	33,540	34,140	59,280	43,260	49,020	59,820	77,040
70	21,630	22,470	39,130	39,830	69,160	50,470	57,190	69,790	89,880
For each additional 0.5kg									
Above 10	26	27	188	172	224	157	217	227	467
Above 20	179	167	308	317	527	384	465	555	708
Multiplier rate per 1kg from 30.1kg									
30.1 - 70.0	309	321	559	569	988	721	817	997	1,284
70.1 - 300.0	248	273	559	571	980	725	743	981	1,284
300.1 - 3,000*	248	273	601	611	979	775	791	980	1,284

DHL Express 12:00 – Guaranteed delivery before 12:00 on the next possible working day from over 82 countries worldwide.

Add THB 200 to the DHL Express Worldwide Import prices.

DHL Express 9:00 – Guaranteed delivery before 9:00 on the next possible working day from over 27 countries worldwide.

Add THB 1,350 to the DHL Express Worldwide Import prices.

Rates are rounded up to the nearest 0.5kg for shipments up to 30kg, and to the nearest 1kg thereafter. Each piece weight is rounded up to the nearest 0.5kg.

Rates are in THB and exclude customs duties, taxes, clearance-related charges, VAT and all surcharges. Terms and conditions apply – see mydhl.express.dhl for details.

*DHL Express does not accept shipments exceeding 3,000kg, or containing pieces exceeding 1,000kg or 300cm in length, and/or not meeting DHL standards for packing. Refer to our Packing Guide on mydhl.express.dhl. These network restrictions are subject to change with 30 days' notice.



READY TO SHIP?



Get a quote



+66 2 345 5000



Chat



Find your nearest DHL Service Point

DHL Express

319 Chamchuri Square Building
Floor 22 & 23
Phayathai Road
Khwaeng Pathumwan
Khet Pathumwan
Bangkok 10330

Valid: 1st January 2024
For public use

The information in this guide is correct as of 1st January 2024. DHL reserves the right to amend or modify any of the information at any time.

