



DHL EXPRESS

SERVICE & RATE GUIDE 2023

VIETNAM

GET STARTED

[Connecting Your World](#)

[Dear Customer](#)

[Sustainability](#)

[Service Offering](#)

[How to Ship with DHL Express](#)

[Digitalization](#)

[Zones and Rates](#)

Ready to ship?
Get a quote from [MyDHL+](#)



CONNECTING YOUR WORLD

Operating in
220+
countries and
territories worldwide



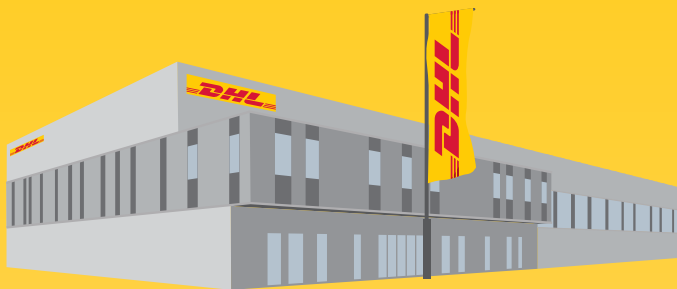
320+
aircraft



2,300+
flights per day



34,600+
vehicles



3,400+
facilities



111,800+
Service Points

By the year 2050,
Deutsche Post DHL Group
aims to achieve net zero
emissions logistics

MISSION 2050
ZERO EMISSIONS
GOGREEN

523
million+
shipments per year



120,000+
employees

370+
TAPA* certifications



Figures are global and are approximate as of the end of 2021
*TAPA = Transported Asset Protection Association

DEAR CUSTOMER

Welcome to the DHL Express Service and Rate Guide 2023. Use this guide to learn how DHL Express products, services and tools can meet your logistics needs. DHL Express is the global market leader and a specialist in Time Definite International (TDI) shipping and courier delivery. We have been building and continuously improving for over 50 years through our team of 120,000 Certified International Specialists, helping more than 2.7 million customers globally.

The world has been buffeted by COVID-19 since 2020. We are proud that DPDHL, having enabled supply chains to move more than 2.5 billion vaccine doses so far, continues to contribute to the solution – and we are adapting every day to a still-evolving situation. Apart from the pandemic, the Ukraine crisis has also added material complexity to global logistics.

In response to these and other uncontrollable events, we continue to make significant **investments** to reinforce the resilience of our global network and secure critical supply chains – thereby continuing to prove our ability to offer reliable services to our customers globally. As an example, we invested in the expansion of our air network, with new airline collaborations with Cargojet and Singapore Airlines in addition to the acquisition of six Boeing 777F aircraft. In Vietnam we have invested more than €14 million in new Hanoi Gateway located near Noi Bai International Airport, which will have a total utilization space of 4,500 sqm and will be equipped with warehouse automation, smart building and energy-efficient solutions. Investments like these allow us to grow the DHL network and improve service quality for you – our customer.

Environmental responsibility continues to be a pillar of our long-term strategy through the DPDHL Sustainability Roadmap. In 2022 we signed ground-breaking agreements with bp and Neste to increase our use of Sustainable Aviation Fuel (SAF). We continue to accelerate the electrification of our last-mile fleet while investing in next-generation technology such as the all-electric Alice airplane, designing and constructing carbon neutral

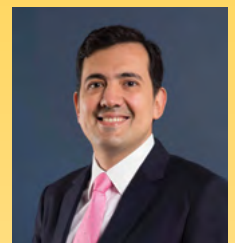
buildings and offering a portfolio of green products. Read more about this on page 4 and on the DPDHL Sustainability portal.

As part of Strategy 2025, we continue to earmark **Digitalization** – which we define as the conscious application of technology and enablement of people, as a means to improve – as a key enabler to reach the next level of excellence for our customers, for our employees and to drive operational efficiency. Read about some of the key developments on pages 15 and 16 and how they benefit you. Try some of them out at MyDHL+ if you haven't already!

We strive to successfully continue our partnership and remain committed to supporting your business anytime and anywhere. **Globalization** remains a powerful force and we invite you to read the first edition of the global DHL Trade Growth Atlas report, which we hope will become a go-to resource for understanding and navigating shifts in the global trade landscape – see page 7 for more. Thank you for trusting us to be your Logistics Partner of Choice! Tell us how we can support you further – please reach out to us on MyDHL+ or by calling Customer Service on 1800 1530.

Sincerely,

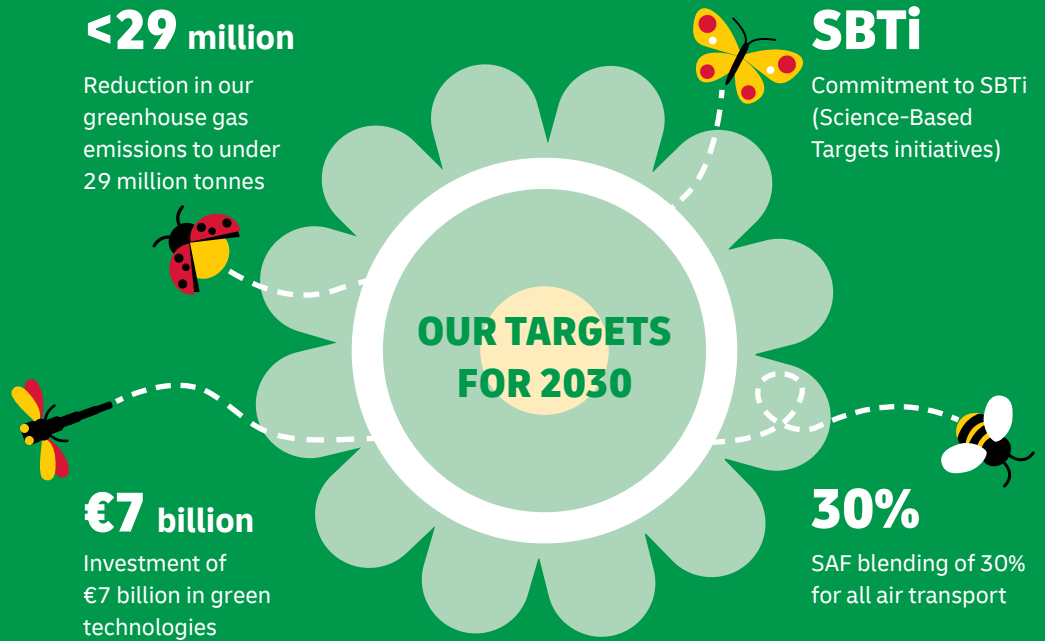
Bernardo Bautista
Country Manager
DHL Express Vietnam



- Connecting Your World
- ▶ Sustainability
- Service Offering
- How to Ship with DHL Express
- Digitalization
- Zones and Rates

SUSTAINABILITY

Everything we do is to serve one purpose: **Connecting people, improving lives.** To fulfill this purpose, we need to make every dimension of our business sustainable. Our Sustainability Roadmap sets out our ambitions in three focus areas: Environment, Social and Governance (ESG). Find case studies and more details [here](#).



CLEAN OPERATIONS FOR CLIMATE PROTECTION



Leader in sustainable aviation

Sustainable Airline Fuel (SAF), one of the key ways to reduce CO₂ in aviation, is already in use in our network. Two landmark collaborations signed by DHL Express with bp and Neste in 2022 are expected to save some **two million tons** of carbon dioxide emissions over the aviation fuel cycle – equivalent to the annual greenhouse gas emissions of approx. 400,000 passenger cars. In this way, we are making significant steps towards our commitment to use **30%** of SAF blending for all air transport by 2030.

Looking even further ahead, DHL is already pioneering next-generation innovations: [read more about Alice](#), the all-electric plane.



Green last-mile and line-haul

Electrify **60%** of last-mile delivery vehicles and increase share of sustainable fuels in line haul to more than **30%** by 2030.



Carbon neutral buildings

Design **100%** of all new buildings to be carbon neutral.



Green product portfolio

Offer green alternatives for **100%** of all core products and solutions.

GREAT COMPANY TO WORK FOR ALL

- Attract and retain the best talent
- Strong 'Safety First' culture
- Diverse and inclusive workplace

HIGHLY TRUSTED COMPANY

- Compliance as an integral part of daily business
- Effective governance set-up across our organization
- Like-minded and compliant suppliers and partners



SERVICE OFFERING

Export Services

Import Services

Enabling Your Growth

Optional Services

Surcharges

Customs Services

Our core services are Time Definite International (TDI) and offer you secure door-to-door delivery of goods and documents to and from virtually every country and territory. Whether you need your shipments delivered at the start, middle or end of a business day, our services offer full track-and-trace visibility so you always know where your shipments are.

EXPORT SERVICES

DHL Express Worldwide

Our most popular product, DHL Express Worldwide, offers an end of business day delivery service around the world for pieces up to 70kg and shipments up to 3,000kg.

We deliver reliably and quickly to more global destinations across a single integrated network than any other express delivery company.

DHL Express 12:00

With DHL Express 12:00 you will receive your shipments before 12 noon on the next possible business day. DHL Express 12:00 offers a money-back guarantee* and allows for pieces up to 70kg and shipments up to 300kg.

DHL Express 9:00 (10:30 to the USA)

Our premium time-definite service offers a delivery before 9:00 (10:30 to the USA) on lanes that guarantee either a next or second business day delivery. DHL Express 9:00 is offered to the majority of business centers in Europe, the Middle East, Africa, Asia and the Americas. DHL Express 9:00 features a money-back guarantee* and is suitable for pieces up to 30kg and shipments up to 300kg.

Our international services at a glance

	DHL Express Worldwide	DHL Express 12:00	DHL Express 9:00 (10:30 to the USA)
Service description	Delivery by the end of the next possible business day	Delivery before 12 noon on the next possible business day	Delivery before 9:00 (10:30 to the USA) on the next possible business day
Money-back guarantee	No	Yes*	Yes*
Countries and territories covered	More than 220	75	27
Delivery attempts	2	2	2
Maximum piece weight (not on pallet)	70kg	70kg	30kg
Maximum pieces per shipment	–	10	10
Maximum piece dimensions (L x W x H)**	120 x 80 x 80cm	120 x 80 x 80cm	120 x 80 x 80cm
Maximum pallet weight	1,000kg	Pallets not accepted	Pallets not accepted
Maximum shipment weight	3,000kg	300kg	300kg
Maximum pallet dimensions (L x W x H)	300 x 200 x 160cm	Pallets not accepted	Pallets not accepted

*Additional terms and conditions apply – see mydhl.express.dhl for details.

**A shipment is deemed unacceptable if its packaging is absent or inadequate, or if transporting the shipment would present risks of damaging equipment, other packages or injuring personnel. DHL reserves the right to either not accept or return the shipment to the shipper. These network restrictions are subject to change with 30 days' notice.

SERVICE OFFERING

Export
Services

Import
Services

Enabling
Your Growth

Optional
Services

Surcharges

Customs
Services

IMPORT SERVICES

With the DHL Express Worldwide Import product, you can import shipments from over 220 countries and territories in the world. This is more than any other express delivery company can offer. What's more, customers in, say, the USA can order an import from China not just to the USA, but to any other destinations as well – we call this a Third Country shipment.

There is no need for local brokers or forwarders to get involved in any part of the process. You are in full control, and able to manage all aspects of your imports in a very simple way.

If you need a faster delivery, our DHL Express 12:00 and DHL Express 9:00 services are available for import as well. You can order an import from another country, to be delivered to your country or any other destination, by using our dedicated electronic shipping solution for imports. You will have one account number, one invoice in a single currency and a fixed price that means you know exactly what you will pay.



SERVICE OFFERING

Export
Services

Import
Services

Enabling
Your Growth

Optional
Services

Surcharges

Customs
Services

GLOBAL TRADE AND YOU

A series of crises has put international trade at the center of the debate about economic growth and resilience. What are the current prospects for globalization and trade? Is there cause for concern? Is trade still an attractive source of growth? We deep dived into the data and conducted a thorough, fact-based analysis – and the results might just surprise you. In partnership with NYU Stern's Center for the Future of Management and its DHL Initiative on Globalization, the '[DHL Trade Growth Atlas](#)' examines global trade growth trends and the trade patterns of 173 countries worldwide that combined make up more than 99% of world trade, GDP and population. Despite recent shocks and worsening macroeconomic conditions in much of the world, the study overall gives an upbeat assessment of the prospects for future trade growth.

We know the value of understanding the long-term global trade landscape for navigating short-term shifts in economic and trade growth. We help our customers make sense of what this means for their business to maximize the enormous potential of globalization and international trade.

Global trade surprisingly resilient through COVID-19 pandemic

Trade likely to grow faster in 2022 and 2023 than in previous decade

Shift in mix of products traded by advanced vs. emerging economies



POWERING UP THE POTENTIAL OF INTERNATIONAL E-COMMERCE

Discover and grow

Visit dhl.com/discover to learn more about how DHL helps e-commerce companies ranging from start-ups to large enterprises, advising them on how to grow internationally. Our e-commerce focussed country guides, white papers such as '[The Ultimate B2B E-Commerce Guide](#)', customer and trend research and market intelligence tools can enable you to better understand your customers and their shipping requirements to take the next step in your e-commerce journey.

International e-commerce

We help our customers go global with ease and speed to maximize the enormous potential of international e-commerce. DHL supports our customers' international growth with:

- Global reach
- Express delivery options
- Flexible delivery options for receivers (see 'On Demand Delivery' on page 15)
- Duty billing options and customs expertise
- Consultative advice for our customers on how to increase sales and grow cross-border

Fast, flexible and easy

Consumers expect everything 'on demand' – anytime, anywhere. DHL shipping options give customers a distinct competitive edge: over 90% of online consumers look at the available delivery options before going to the checkout, and their decision is influenced by delivery speed, flexibility and ease.



SERVICE OFFERING

 Connecting Your World

 Sustainability

 ► Service Offering

 How to Ship with DHL Express

 Digitalization

 Zones and Rates

 Export
Services

 Import
Services

 Enabling
Your Growth

 Optional
Services

Surcharges

 Customs
Services

OPTIONAL SERVICES

[View charges](#)

DHL Express offers a wide range of optional services – from non-standard deliveries and billing options to climate neutral shipping.

Dedicated Pickup and Delivery

If your business needs a dedicated vehicle to collect or deliver unusual shipments, or a pickup or delivery outside normal business hours, we can arrange this.

Shipment Preparation

This is a convenient, fast and reliable service for seasonal or irregular shipments that require extra resources for their preparation. DHL manages the entire process of waybill preparation, content selection, labeling and packaging, then sends the shipments to the designated addresses.

Saturday Delivery

We offer Saturday delivery services to key cities in more than 70 countries.

Shipment Insurance

We recommend this comprehensive protection for your valuable or personal shipments, giving you peace of mind in the unlikely event of physical damage or loss.

Extended Liability

If you are sending valuable documents such as passports, visa applications or regulatory certificates you can extend the DHL standard liability with this service. It provides coverage and compensation in the case of loss or damage.

Direct Signature

If you are sending sensitive documents or high value contents you can request DHL to obtain a direct signature from the consignee or a representative at the delivery address. DHL will

ensure your shipment is not re-directed, or delivered at an alternative address.

Printed Invoice

This service is for customers who require a paper invoice where e-billing is the agreed standard. This service provides flexibility for a different invoicing method than what is already agreed.

Residential Address

Customers shipping to a home or private residence can activate specific delivery options by designating the delivery address as residential. For such shipments, DHL Express will proactively notify the receiver via email or SMS about the shipment's progress. Receivers can then select the most suitable delivery option via [On Demand Delivery](#).

GoGreen Climate Neutral

This service is for customers who need a reliable method to calculate their annual carbon emissions at a shipment level and subsequently offset these emissions through approved environmental programs. The whole process is verified annually by an independent body accredited by the Société Générale de Surveillance (SGS). DHL can also provide reports for either a high level estimate or a detailed carbon footprint.

Change of Billing

This applies when a customer requests a change of defined billing information on an already issued invoice, which will result in a reissuing of the invoice and, in case of an account change, crediting of the old account and debiting of the new.

Neutral Delivery

This service allows for the delivery of non-document shipments, without any value of the product being shared or exposed to the receiver, since the commercial invoice is removed prior to delivery.

DUTY BILLING SERVICES

Duty Tax Paid

At the customer's request, DHL clears the shipment at destination and arranges for the applicable import duties, taxes and regulatory charges to be invoiced to a specified DHL account at origin or third country, rather than the receiver of the shipment being billed at destination. The duty tax payer will be invoiced an extra charge based on a flat rate or a percentage of the fiscal charges that were paid.

Duty Tax Importer

At the customer's request, DHL clears the shipment at destination and arranges for any applicable import duties, taxes and regulatory charges to be invoiced to the importer's specified DHL account at destination. The duty tax payer will be invoiced an extra charge based on a flat rate or a percentage of the fiscal charges that were advanced. The shipper must provide the importer's address details, tax ID and the account number to be billed.

Duty Tax Receiver

This service covers any import of a non-document shipment for which DHL has used its own credit line with Customs to advance or guarantee the payment of duties, taxes or regulatory charges on behalf of importers and consumers with whom DHL has no contract. An extra charge based on a minimum rate or a percentage of the fiscal charges that were advanced or guaranteed is billed to the duty tax payer.

For a full list of optional services, please visit mydhl.express.dhl.

SERVICE OFFERING

[Connecting Your World](#)
[Sustainability](#)
[▶ Service Offering](#)
[How to Ship with DHL Express](#)
[Digitalization](#)
[Zones and Rates](#)
[Export Services](#)
[Import Services](#)
[Enabling Your Growth](#)
[Optional Services](#)
[Surcharges](#)
[Customs Services](#)

SURCHARGES

[View charges](#)

In order to maintain a consistently high level of service, in specific circumstances DHL Express levies a surcharge for exceptional activities, ensuring that these surcharges are fair for all of our customers.

Fuel Surcharge

This variable surcharge is applied to the weight charge of each shipment and any transportation related surcharges. It is derived from publicly available fuel oil indices that are also shown on the DHL Express website at mydhl.express.dhl. The charge is calibrated every month to the oil price that was current two months prior to the billing month.

Remote Area

This surcharge applies when a shipment is collected from or delivered to a location that is distant or difficult to serve.

Overweight Piece

A fixed surcharge is applied to every piece, including a pallet that exceeds a scale or volumetric weight of 70kg.

Oversize Piece

This fixed surcharge applies to every piece, including a pallet, with a single dimension in excess of 120cm.

Non-Stackable Pallet

This fixed surcharge is applied to every pallet within a shipment that cannot be stacked, either on request by the shipper, or because of its shape, content or packaging. This surcharge does not apply to pieces below 30kg.

Dangerous Goods

DHL can carry acceptable quantities of dangerous goods or hazardous materials. Packages containing dangerous goods materials will be assessed and a service charge will be applied accordingly. Additional charges may also apply.

Address Correction

This fixed surcharge is applied to any shipment that has an incorrect delivery address at the time of pickup and the delivery cannot be fulfilled after making efforts at the destination to determine the correct address.

Data Entry

This fixed surcharge applies for each shipment consigned with non-electronic, paper based manual waybills. Electronic shipping documentation incurs no additional charges.

Security Charges

Additional surcharges may apply when shipping from or to a destination country where DHL is operating at elevated risk due to continuous state of war, civil unrest, or continuous threats from terrorism (**Elevated Risk**), or when shipping from or to a destination country that is subject to trade restrictions imposed by the UN Security Council (**Restricted Destination**).

Emergency Situation

A temporary surcharge, which allows us to cover operating cost increases due to an emergency situation out of DHL's control. Change in market dynamics and air capacity availability is reflected through regular price adjustments.

Peak Season

A temporary surcharge, which allows us to cover part of the operating cost increases resulting from necessary network adjustments during Peak Season.

Packaging Items

Charges apply for all DHL standard packaging items including plastic flyers provided in bulk or stacks.



For a full list of surcharges, please visit mydhl.express.dhl.

SERVICE OFFERING

Export
Services

Import
Services

Enabling
Your Growth

Optional
Services

Surcharges

Customs
Services

CUSTOMS SERVICES

[View charges](#)

DHL Express is the international specialist in shipping, with extensive knowledge and experience of dealing with customs topics worldwide. For your peace of mind, we provide a wide range of customs support for standard as well as non-routine customs-clearance processes. By making sure that clearance is a smooth and efficient process, we ensure your shipments arrive as quickly as possible, and leave you free to focus on your core business. With our online tool (tas.dhl.com) we provide essential customs information to help you prepare your shipments.

Non-Routine Entry

Applies when shipments are subject to non-routine clearance procedures, due to their value, weight and/or commodity as defined by destination Customs Authorities. May also apply in selected countries where DHL is legally obliged to outsource formal clearance entries to a licensed third party broker.

Bonded Storage

Storage charges apply when the shipment cannot be released by customs due to inaccurate or missing paperwork. Charges take effect three working days after the freight arrival date or broker notification, whichever is later. The charge applies to the duty and taxes payer.

Bonded Transit

Usually operated within a country or customs union when DHL is requested to move non-document foreign-origin goods under bond to a location other than the regular DHL gateway at destination, prior to final clearance by the importer or his designed broker. Bonded Transit may apply to both export and import shipments.

Export Declaration

Applies in countries where an export declaration is required for shipments containing controlled commodities or exceeding VND 5,000,000 or a certain weight. Depending on origin country, shippers that submit a declaration online may avoid the local charge.

Multiline Entry

A service charge will be assessed for multiline item entries with more than five lines. An example would be – one shipment with

multiple products or multiple invoices. All products require identification and must be classified under separate harmonized tariff numbers.

Permits and Licenses

To accelerate import of selected controlled commodities, such as medical devices, pharmaceuticals, computer monitors, laser CD players, cosmetics, eyeglasses, food and food products, DHL is required to file specific information in order to obtain the required import permits or licenses.

Other Government Agency

At request, DHL will arrange the completion of Veterinary, Health or Phytosanitary controls at the First Point of Entry in a country or a Customs Union, typically required when importing animal products, plants, seeds, or pharmaceutical products.



HOW TO SHIP WITH DHL EXPRESS

Preparing Your Shipment

Packaging Your Shipment

Paying for Your Shipment

PREPARING YOUR SHIPMENT: AS EASY AS 1-2-3

1 Shipment weight

- Please weigh and measure your shipment.
- If you are sending a large but lightweight shipment, where its volumetric (dimensional) weight exceeds its actual weight, the cost of the shipment is calculated on the space your consignment takes up on the aircraft. This is a standard IATA method. To calculate the volumetric weight of your shipment, simply multiply the length by height by width in centimeters, then divide the total sum by 5,000 for each piece in the shipment.
- Any piece in the shipment may be re-weighed and/or re-measured by DHL to confirm this calculation.

2 Documentation required: waybill

- All shipments sent with DHL Express need to have a fully completed DHL waybill or label securely attached to each piece. This will enable the successful movement of your shipment through the DHL network. Each waybill or label is individually numbered to allow you to track your shipment from collection through to delivery.
- Your shipment may also need to be accompanied by customs documentation, such as a commercial or proforma invoice, as well as additional paperwork depending on the contents and value of the shipment and the country you are sending to.

3 Documentation required: invoice

- A commercial or proforma invoice is required when sending non-document shipments to countries and territories outside your origin country or customs union. This is essentially a declaration containing all the details of a transaction and is used by customs authorities to assess if duties or taxes are payable.
- A commercial invoice is used when goods are part of a commercial transaction or intended for resale.
- A proforma invoice is used when sending goods of no commercial value (for example, when sending samples).



HOW TO SHIP WITH DHL EXPRESS

- Connecting Your World
- Sustainability
- Service Offering
- ▶ How to Ship with DHL Express
- Digitalization
- Zones and Rates

Preparing Your Shipment

Packaging Your Shipment

Paying for Your Shipment

PREPARING YOUR SHIPMENT INVOICE

Your invoice will require the following details:

1. BANK DETAILS

These are the bank details that will be used for the transaction between the seller and buyer. These details are not required for non-commercial/proforma invoices.

2. DESCRIPTION

Generic or broad descriptions are no longer permitted and are likely to cause delays. Descriptions should include the items, how many there are, what they are made of, and what they will be used for. Describing items as ‘samples’, ‘parts’ or ‘electronics’ is not acceptable for customs classification, safety and security reasons. Instead of ‘electronics’, for example, use a description such as ‘television’.

3. COMMODITY CODE

This is the product identification code used by the exporting country to classify the goods to be exported. It assists clearance and avoids delays.

4. COUNTRY OF MANUFACTURE/ORIGIN

This relates to the place of manufacture, not the country of export. If items are manufactured in more than one country, please list the origins.

5. TOTAL DECLARED VALUE

This is the total value of the transaction for customs purposes based on the Incoterm selected. The total declared value should include freight and insurance charges if the seller is responsible for these two elements.

6. TYPE OF EXPORT

The options are: (1) Permanent; (2) Temporary; and (3) Repair & Return.

7. INCOTERM

Insert the Incoterm that best describes the terms of the transaction. For example, DAP (Delivered At Place).

8. REASON FOR EXPORT

This could be: For Sale; For Repair; After Repair; Gift; Sample; Personal Use Not For Resale; Replacement; Intercompany Transfer; or Personal Effects.

Commercial invoice

Bank details

1.

Importer (bill to)

Full description of goods	Commodity code	Item quantity	Unit value [Currency]	Subtotal value [Currency]	Net weight	Country of manufacture/origin
2.	3.					4.
Freight						
Insurance						
Total declared value/currency				Total net weight/kg(s)		
5.						
Total pieces				Total gross weight/kg(s)		

Exporter

Tax ID/VAT number

Date

Waybill number

Invoice number

Exporter code

Receiver if different from Importer

Tax ID/VAT number

Shipment reference

6. Type of export

7. Incoterms

8. Reason for export

I/We hereby certify that the information contained in this invoice is true and correct and that the contents of the shipments are as stated above.

Position in company

Signature

Company stamp



HOW TO SHIP WITH DHL EXPRESS

 Connecting Your World

 Sustainability

 Service Offering

 ► How to Ship with DHL Express

 Digitalization

 Zones and Rates

Preparing Your Shipment

Packaging Your Shipment

Paying for Your Shipment

PACKAGING YOUR SHIPMENT

To ensure that your shipments travel safely and securely through the DHL Express global network, it is important that they are packaged and labeled correctly.

Packaging guidelines

- If you are re-using envelopes or boxes, please ensure that old labels and markings are removed
- Securely fix a waybill to each piece in your shipment. The waybill can be thought of as the shipment's airline ticket and it will delay delivery if it becomes separated from your shipment
- The barcodes on the waybill are scanned at numerous points during your shipment's journey. Please ensure the barcode is flat and not covered by tape, shrinkwrap or strapping
- Place a waybill on the top or side of each piece in your shipment and please ensure it does not overlap the corners or edges of boxes
- Use adequate protective wrapping for fragile or delicate items and ensure they are packed as far away as possible from the corners of boxes
- To prevent injury to our employees, please pay special attention to the packaging of sharp items. There should not be any possibility of the contents piercing the packaging
- Any individual pieces over 70kg should be placed on a pallet. If you are sending a multi-piece shipment, it is not necessary to place the individual pieces on a pallet unless they exceed 70kg. For example, a shipment comprising four 25kg pieces does not have to be placed on a pallet

DHL packaging

We offer a range of high-quality DHL-branded packaging items, suitable for shipping items of all shapes and sizes.

The items available include:

- Flyer bags
- Cardboard document envelopes
- Boxes in a range of sizes

For more information please refer to the Packing Guide available on mydhl.express.dhl.

Prohibited and Restricted Commodities

Prohibited Items

The following items will NOT be accepted for carriage by DHL.

This list includes items which are prohibited for carriage by any law, regulation or statute of any federal, state or local government of any country from, to or through which the items may be carried. For international carriage there may be additional prohibited items specified by the country of destination. DHL may at its sole discretion refuse to carry other items not listed below.

- Bullion (of any precious metal)
- Cannabis
- Cash (legal tender – bank notes, currency notes and coins)
- Complete firearms, ammunition, explosives/explosive devices including inert explosives and test pieces, air guns, replica and imitation firearms
- Human remains or ashes in any form
- Hunting (animal) trophies, animal parts such as ivory and shark's fin, animal remains or ashes, or animal by-products and derived products not intended for human consumption, prohibited for movement by the Convention on International Trade in Endangered Species of Wild Fauna and Flora (CITES) and/or local law
- Illegal goods, such as counterfeit goods and narcotics
- Live animals (including but not limited to mammals, reptiles, fish, invertebrates, amphibians, birds, insects, larvae and pupae)
- Loose lithium metal batteries under IATA PI968 section II
- Loose precious and semi-precious stones (cut or un-cut, polished or un-polished)



HOW TO SHIP WITH DHL EXPRESS

 Connecting Your World

 Sustainability

 Service Offering

 ► How to Ship with DHL Express

 Digitalization

 Zones and Rates

Preparing Your Shipment

Packaging Your Shipment

Paying for Your Shipment

Restricted Items

The following items will NOT be accepted for carriage unless otherwise agreed to by DHL. To obtain such agreement a business case will need to be conducted by DHL and the items approved for carriage will be recorded in writing with the customer.

- Air guns, tasers, imitation or replica firearms, firearm parts and replica ammunition (includes rifle butts, trigger mechanisms, screws/bolts etc which are manufactured for the sole purpose of creating a functional firearm)
- Antiques and works of art with a shipment value in excess of €500,000
- Banderols/Tax stickers with a shipment value in excess of €500,000
- Cigarettes, cigars, tobacco products and electronic cigarettes with a shipment value in excess of €500,000
- Commemorative coins and medals with an individual value or total shipment value of €2,000 or more are restricted for carriage
- Dangerous/hazardous goods including but not limited to perfumes, aftershaves, aerosols, flammable substances, dry ice, biological substances, UN classified dangerous goods and any goods specified as such under International Air Transport Association regulations (“IATA”), the

Agreement on Dangerous Goods by Road (“ADR”) or International Maritime Dangerous Goods (“IMDG”) regulations

- Financial and monetary commodities – examples include but are not limited to activated SIM cards for mobile phones, blank or activated credit or cash dispenser cards, blank checks, event tickets, lottery tickets, money or postal orders, pre-paid phone cards, tickets (blank stock), traveler’s checks, vouchers/tokens, unused stamps etc. Applicable to all shipments valued in excess of €500,000
- Furs
- Jewelry and watches and with individual values in excess of €5,000. The shipment must not exceed €100,000

PAYING FOR YOUR SHIPMENT

You can pay for DHL Express services either with cash, a credit card or by bank transfer. You can open an account with DHL Express to pay via bank transfer; and all account customers receive invoices on a pre-agreed basis. For more details, please get in touch with a Customer Service Advisor at your local DHL Express office or go to mydhl.express.dhl.



DIGITALIZATION

- Connecting your World
- Sustainability
- Service Offering
- How to Ship with DHL Express
- Digitalization
- Zones and Rates

Digitalization is one of the most important trends impacting logistics, and it is one of the key pillars of DPDHL's Strategy 2025. Through digitalization we bring benefits for our customers, our operations and our own people.

We invest continually in market-leading technologies to help our customers to manage and monitor shipments, create shipping labels, get quotes, schedule courier pickups, connect with us and more. Digitalizing our operations provides more transparency, allowing us to better anticipate and meet our customers' needs.

ON DEMAND DELIVERY

DHL's On Demand Delivery tool keeps receivers informed of shipment progress, allowing them to reschedule, reroute, release or conveniently collect from a DHL Service Point. It is an innovative, easy-to-use, mobile-friendly service, especially for residential deliveries.

Designed to enhance the online shopper's experience, the service is available globally, meaning consistent service standards and a harmonized user experience.



ondemand.dhl.com



Scheduled delivery



Signature release/leave your signature



Alternative address



Collect from Service Point



Vacation hold



Leave with neighbor or concierge

DHL EXPRESS COMMERCE

Take your website international with DHL Express Commerce. Offer your customers all the benefits of DHL Express at your checkout in real-time. Import, manage and ship their orders quickly and efficiently with no complicated development. Add the power of DHL Express to your e-commerce business quickly and easily, giving you the competitive edge. DHL Express Commerce integrates with the biggest e-commerce platforms, including: Magento, Shopify, WooCommerce, Amazon and eBay.

MYDHL+

mydhl.express.dhl

MyDHL+ re-imagines the way the shipping business does business, by combining the tools and services our customers use most. With its mobile friendly and intuitive interface, customers can now import, export, schedule a pickup, track shipments and pay bills more quickly than ever – all in one visit, with one password and zero headaches. MyDHL+ makes it incredibly easy to navigate the complexities of international shipping.



DHL EXPRESS MOBILE APP



The DHL Express Mobile app lets you track your shipments and manage your deliveries all in one place. You can locate the nearest DHL Service Point for parcel drop off or collection, and quickly check shipping rates too – right on your smartphone. Advanced GPS location services and camera barcode scanning are also available. Download DHL Express Mobile today, on Android or iOS.



DIGITALIZATION

 Connecting your World

 Sustainability

 Service Offering

 How to Ship with DHL Express

 ► Digitalization

 Zones and Rates

DIGITAL ASSISTANT

Our Digital Assistant is a live chat helpdesk that offers a 24/7 service across multiple online channels and platforms, and in 41 languages, including Vietnamese. It tracks your shipments, answers queries and directs you to FAQs.



[Chat with us now!](#)



DIGITAL TRUST

Logistics requires transferring data and content around the world and we embrace a responsibility to do this securely. Our standards led by our binding Corporate Rules and by our [Data Privacy Policy](#) apply throughout the DPDHL Group and are approved by the Supervisory Authorities. We maintain a comprehensive [Information Security](#) and [Data Protection](#) approach based on ISO/IEC 27001:2013 and GDPR, to ensure a high standard when managing customer information assets and personal data. We aim to provide a rapid response to any security incident via our 24x7 Cyber Defence Centre (CDC) with global coverage and our global DPO community.

DPDHL acts as controller in respect of any personal data it receives from customers and holds to effectively provide transportation services and in regard to the delivery of any shipments or documents that it processes to perform its contractual obligations. DPDHL will act as a data controller when an individual is executing their rights under privacy legislations.

CUSTOMER SHIPPING INTEGRATION

Using EDI and XML Services enables you to incorporate DHL's online shipping capabilities into your own website, warehouse or customer service application. This provides global shipment tracking while making it faster and easier to access information about transit times, rates and courier bookings.

SPECIFIC SOLUTIONS

DHL offers additional capabilities for businesses requiring more specialized solutions – for example, its Medical Express and Collect & Return services.

ROBOTICS

Driven by rapid technological advancements and increasing supply chain complexity, robotics solutions are entering the logistics environment, boosting productivity and driving zero-defect processes.

Robots are adopting more roles at DHL Express, assisting workers with the most repetitive and labor-intensive tasks and freeing them up to do higher-order, customer-facing activities. Examples include the use of articulated robotic arms for sorting inbound packages to last-mile delivery routes. We have four such robots in use globally, with this number set to double soon.

Our robots help get couriers out on the road faster – which means your parcels get delivered faster.



ZONES AND RATES

Calculate the Price
of Your Shipment

Optional
Services

Surcharges

Customs
Services

Service Capability
and Rating Zones

Export
Services

Import
Services

CALCULATE THE PRICE OF YOUR SHIPMENT



Determine which zone your destination is in (page 19) and whether yours is a document or non-document shipment.



Do you need your shipments to arrive by the end of business or earlier in the day (page 5)?



Based on weight (page 11), zone and speed, confirm your base price (page 21 for exports and page 23 for imports).



Add any optional services (page 8) and check if any surcharges apply (page 9).

Base price + Optional services + Surcharges = Total price

OPTIONAL SERVICES

[View explanation](#)

Optional services	Charging method	Charge
Dedicated Pickup	Per shipment	VND 12,000 per kg with minimum of VND 1,500,000
Dedicated Delivery	Per shipment	VND 12,000 per kg with minimum of VND 1,500,000
Shipment Preparation	Per shipment	VND 500,000
Saturday Delivery	Per shipment	VND 600,000
Shipment Insurance	By shipment value	VND 315,000 or 1.5% of stated shipment value if higher
Extended Liability	Per shipment	VND 100,000
Direct Signature	Per shipment	VND 130,000
Printed Invoice	Per invoice	VND 50,000
Residential Address	Per shipment	VND 80,000
GoGreen Climate Neutral	Per shipment	VND 2,650 per kg with minimum of VND 2,650
Change of Billing	Per invoice	VND 280,000
Neutral Delivery	Per shipment	VND 250,000
Duty Billing Services		
Duty Tax Paid	% of fiscal charges	2% of fiscal charges with minimum of VND 600,000
Duty Tax Importer	% of fiscal charges	2% of fiscal charges with minimum of VND 175,000
Duty Tax Receiver	% of fiscal charges	2% of fiscal charges with minimum of VND 175,000

For a full list of optional services, please visit our website at mydhl.express.dhl.

ZONES AND RATES

[Calculate the Price of Your Shipment](#)
[Optional Services](#)
[Surcharges](#)
[Customs Services](#)
[Service Capability and Rating Zones](#)
[Export Services](#)
[Import Services](#)

SURCHARGES

[View explanation](#)

Surcharges	Charging method	Charge
Fuel Surcharge	Per shipment	Percentage of transportation and additional charges, as per index; details here
Remote Area	Per shipment	VND 8,400 per kg with a minimum of VND 500,000 per shipment
Additional Handling		
Overweight Piece	Per piece	VND 2,210,000
Oversize Piece	Per piece	VND 1,250,000
Non-Stackable Pallet	Per piece	VND 6,000,000
Dangerous Goods		
Full Dangerous Goods	Per piece	VND 2,300,000
Lithium Batteries Section II (966, 969)	Per piece	VND 150,000
Excepted Quantities	Per piece	VND 150,000
Dry Ice (UN1845)	Per piece	VND 300,000
Address Correction	Per shipment	VND 300,000
Data Entry	Per shipment	VND 135,000
Security Charges		
Elevated Risk	Per shipment	VND 500,000
Restricted Destination	Per shipment	VND 750,000
Packaging Items		
Plastic Flyers	Per stack	VND 460,000 per stack (100 flyers)
Bulk Packaging	Per stack	Variable by packaging type and quantity

CUSTOMS SERVICES

[View explanation](#)

Customs services	Charging method	Charge
Non-Routine Entry	Per shipment	VND 1,000,000
Bonded Storage	Per shipment, per day after three working days	VND 230,000 per shipment and VND 4,600 per kg (both per day after three working days)
Bonded Transit	Per shipment	VND 1,100,000
Export Declaration	Per shipment	VND 245,000
Multiline Entry	Rate per line, after five lines	VND 150,000
Permits and Licenses	Per shipment	VND 150,000
Other Government Agency	Per shipment	VND 750,000

Please visit our website for a full list of [surcharges](#) and [customs services](#).

ZONES AND RATES

- Connecting Your World
- Sustainability
- Service Offering
- How to Ship with DHL Express
- Digitalization
- ▶ Zones and Rates

Calculate the Price of Your Shipment Optional Services Surcharges Customs Services Service Capability and Rating Zones Export Services Import Services

SERVICE CAPABILITY AND RATING ZONES

Country/Territory	Zone	DHL Express Worldwide	DHL Express 12:00	DHL Express 9:00	Imports
Afghanistan	10	✓			✓
Albania	9	✓			✓
Algeria	10	✓			✓
American Samoa	10	✓			✓
Andorra	9	✓			✓
Angola	10	✓	✓		✓
Anguilla	10	✓			✓
Antigua	10	✓			✓
Argentina	10	✓	✓		✓
Armenia	9	✓			✓
Aruba	10	✓			✓
Australia	6	✓	✓		✓
Austria	8	✓	✓	✓	✓
Azerbaijan	9	✓			✓
Bahamas	10	✓			✓
Bahrain	9	✓			✓
Bangladesh	6	✓			✓
Barbados	10	✓			✓
Belarus	9	✓			✓
Belgium	8	✓	✓	✓	✓
Belize	10	✓			✓
Benin	10	✓			✓
Bermuda	10	✓			✓
Bhutan	6	✓			✓
Bolivia	10	✓			✓
Bonaire	10	✓			✓
Bosnia and Herzegovina	9	✓			✓
Botswana	10	✓			✓
Brazil	10	✓	✓		✓
Brunei	3	✓			✓
Bulgaria	9	✓	✓		✓
Burkina Faso	10	✓	doc		✓
Burundi	10	✓			✓
Cambodia	6	✓	doc		✓
Cameroon	10	✓	✓		✓
Canada	7	✓	✓		✓
Canary Islands, The	10	✓			✓
Cape Verde	10	✓			✓
Cayman Islands	10	✓			✓
Central African Republic	10	✓			✓
Chad	10	✓			✓
Chile	10	✓	✓		✓
China, People's Republic	2/5	✓	doc		✓
Colombia	10	✓	✓	✓	✓
Comoros	10	✓			✓
Congo	10	✓			✓
Congo, Democratic Rep. of	10	✓	doc		✓
Cook Islands	10	✓			✓
Costa Rica	10	✓			✓
Cote d'Ivoire	10	✓	doc		✓
Croatia	9	✓			✓
Cuba	10	✓			✓
Curacao	10	✓			✓
Cyprus	9	✓	doc		✓
Czech Republic, The	8	✓	✓	✓	✓
Denmark	8	✓	✓	✓	✓
Djibouti	10	✓			✓
Dominica	10	✓			✓
Dominican Republic	10	✓			✓

Country/Territory	Zone	DHL Express Worldwide	DHL Express 12:00	DHL Express 9:00	Imports
Ecuador	10	✓	doc		✓
Egypt	10	✓			✓
El Salvador	10	✓			✓
Eritrea	10	✓			✓
Estonia	9	✓	✓		✓
Eswatini	10	✓			✓
Ethiopia	10	✓			✓
Falkland Islands	10	✓			✓
Faroe Islands	10	✓			✓
Fiji	10	✓			✓
Finland	8	✓	✓		✓
France	8	✓	✓	✓	✓
French Guiana	10	✓			✓
Gabon	10	✓	doc		✓
Gambia	10	✓			✓
Georgia	10	✓			✓
Germany	8	✓	✓	✓	✓
Ghana	10	✓			✓
Gibraltar	9	✓	✓		✓
Greece	9	✓	✓		✓
Greenland	10	✓			✓
Grenada	10	✓			✓
Guadeloupe	10	✓			✓
Guam	10	✓			✓
Guatemala	10	✓	doc		✓
Guernsey	9	✓	✓	doc	✓
Guinea Republic	10	✓			✓
Guinea-Bissau	10	✓			✓
Guinea-Equatorial	10	✓			✓
Guyana (British)	10	✓			✓
Haiti	10	✓			✓
Honduras	10	✓			✓
Hong Kong SAR China	1	✓	✓	✓	✓
Hungary	9	✓	✓		✓
Iceland	10	✓	✓		✓
India	6	✓	doc		✓
Indonesia	3	✓			✓
Iran, Islamic Rep. of	10	✓			✓
Iraq	10	✓			✓
Ireland, Rep. of	8	✓	✓	✓	✓
Israel	10	✓			✓
Italy	8	✓	✓	✓	✓
Jamaica	10	✓			✓
Japan	4	✓	✓		✓
Jersey	9	✓	✓	doc	✓
Jordan	9	✓			✓
Kazakhstan	10	✓	✓		✓
Kenya	10	✓	✓		✓
Kiribati	10	✓			✓
Korea, D.P.R. of (North)	10	✓			✓
Korea, Rep. of (South)	5	✓	✓		✓
Kosovo	10	✓			✓
Kuwait	9	✓			✓
Kyrgyzstan	10	✓			✓
Lao P.D.R.	6	✓			✓
Latvia	9	✓			✓
Lebanon	10	✓	doc		✓
Lesotho	10	✓			✓
Liberia	10	✓			✓

doc = document contents only ✓ = document and non-document contents

Table continues overleaf

For transit times and the availability of DHL Express 12:00 and DHL Express 9:00 for your origin and destination address, please refer to the DHL Capability Tool at dct.dhl.com. Pieces with a single base length up to 300cm are accepted. Additional surcharges may apply.

ZONES AND RATES

- Connecting Your World
- Sustainability
- Service Offering
- How to Ship with DHL Express
- Digitalization
- ▶ Zones and Rates

- Calculate the Price of Your Shipment
- Optional Services
- Surcharges
- Customs Services
- Service Capability and Rating Zones
- Export Services
- Import Services

SERVICE CAPABILITY AND RATING ZONES

Country/Territory	Zone	DHL Express Worldwide	DHL Express 12:00	DHL Express 9:00	Imports
Libya	10	✓			✓
Liechtenstein	8	✓			✓
Lithuania	9	✓	doc		✓
Luxembourg	8	✓	✓	✓	✓
Macau SAR China	3	✓			✓
Madagascar	10	✓	✓		✓
Malawi	10	✓			✓
Malaysia	1	✓	✓		✓
Maldives	6	✓			✓
Mali	10	✓			✓
Malta	8	✓			✓
Marshall Islands	10	✓			✓
Martinique	10	✓			✓
Mauritania	10	✓			✓
Mauritius	10	✓			✓
Mayotte	10	✓			✓
Mexico	7	✓			✓
Micronesia, Fed. States of	10	✓			✓
Moldova, Rep. of	10	✓			✓
Monaco	8	✓			✓
Mongolia	10	✓			✓
Montenegro, Rep. of	9	✓			✓
Montserrat	10	✓			✓
Morocco	10	✓			✓
Mozambique	10	✓	doc		✓
Myanmar	6	✓	doc		✓
Namibia	10	✓	doc		✓
Nauru, Rep. of	10	✓			✓
Nepal	6	✓			✓
Netherlands, The	8	✓	✓	✓	✓
Nevis	10	✓			✓
New Caledonia	10	✓			✓
New Zealand	6	✓	✓		✓
Nicaragua	10	✓			✓
Niger	10	✓			✓
Nigeria	10	✓			✓
Niue	10	✓			✓
North Macedonia	9	✓			✓
Northern Mariana Islands	10	✓			✓
Norway	9	✓	✓		✓
Oman	9	✓			✓
Pakistan	6	✓	doc		✓
Palau	10	✓			✓
Panama	10	✓			✓
Papua New Guinea	6	✓			✓
Paraguay	10	✓			✓
Peru	10	✓	doc		✓
Philippines, The	3	✓	✓	✓	✓
Poland	9	✓	✓	doc	✓
Portugal	8	✓	✓	✓	✓
Puerto Rico	10	✓			✓
Qatar	9	✓			✓
Reunion, Island of	10	✓			✓
Romania	9	✓	✓		✓
Russian Federation, The	10	✓			✓
Rwanda	10	✓			✓
Samoa	10	✓			✓
San Marino	9	✓			✓

Country/Territory	Zone	DHL Express Worldwide	DHL Express 12:00	DHL Express 9:00	Imports
Sao Tome & Principe	10	✓			✓
Saudi Arabia	9	✓	doc		✓
Senegal	10	✓	✓		✓
Serbia, Rep. of	9	✓			✓
Seychelles	10	✓			✓
Sierra Leone	10	✓			✓
Singapore	1	✓	✓	✓	✓
Slovakia	9	✓	✓	✓	✓
Slovenia	9	✓	✓	doc	✓
Solomon Islands	10	✓			✓
Somalia	10	✓			✓
Somaliland, Rep. (N. Somalia)	10	✓			✓
South Africa	10	✓	✓	✓	✓
South Sudan	10	✓			✓
Spain	8	✓	✓	doc	✓
Sri Lanka	6	✓	✓		✓
St. Barthelemy	10	✓			✓
St. Eustatius	10	✓			✓
St. Helena	10	✓			✓
St. Kitts	10	✓			✓
St. Lucia	10	✓			✓
St. Maarten	10	✓			✓
St. Vincent	10	✓			✓
Sudan	10	✓			✓
Suriname	10	✓			✓
Sweden	8	✓	✓	✓	✓
Switzerland	8	✓	✓	✓	✓
Syria	10	✓			✓
Tahiti	10	✓			✓
Taiwan	3	✓	✓	✓	✓
Tajikistan	10	✓			✓
Tanzania	10	✓			✓
Thailand	1	✓	✓	✓	✓
Timor-Leste	6	✓			✓
Togo	10	✓			✓
Tonga	10	✓			✓
Trinidad and Tobago	10	✓			✓
Tunisia	10	✓			✓
Turkey	10	✓	✓		✓
Turkmenistan	10	✓			✓
Turks and Caicos Islands	10	✓			✓
Tuvalu	10	✓			✓
Uganda	10	✓	doc		✓
Ukraine	10	✓			✓
United Arab Emirates	9	✓			✓
United Kingdom	8	✓	✓	✓	✓
United States of America	7	✓	✓	10:30	✓
Uruguay	10	✓			✓
Uzbekistan	10	✓			✓
Vanuatu	10	✓			✓
Vatican City	8	✓			✓
Venezuela	10	✓			✓
Virgin Islands (British)	10	✓			✓
Virgin Islands (US)	10	✓			✓
Yemen, Rep. of	10	✓			✓
Zambia	10	✓	✓		✓
Zimbabwe	10	✓	doc		✓

doc = document contents only ✓ = document and non-document contents

For transit times and the availability of DHL Express 12:00 and DHL Express 9:00 for your origin and destination address, please refer to the DHL Capability Tool at dct.dhl.com. Pieces with a single base length up to 300cm are accepted. Additional surcharges may apply.

ZONES AND RATES

[Connecting Your World](#)
[Sustainability](#)
[Service Offering](#)
[How to Ship with DHL Express](#)
[Digitalization](#)
[▶ Zones and Rates](#)
[Calculate the Price of Your Shipment](#)
[Optional Services](#)
[Surcharges](#)
[Customs Services](#)
[Service Capability and Rating Zones](#)
[Export Services](#)
[Import Services](#)

Export rates by zone and product

DHL EXPRESS WORLDWIDE

Weight in kg	Zone 1	Zone 2	Zone 3	Zone 4	Zone 5	Zone 6	Zone 7	Zone 8	Zone 9	Zone 10
Documents only up to 2kg										
0.5	1,167,600	1,175,500	1,187,900	1,199,400	1,379,300	1,418,200	1,430,400	1,451,300	1,878,900	2,586,900
1	1,320,700	1,328,900	1,400,100	1,435,900	1,645,700	1,693,300	1,699,700	1,808,300	2,334,700	3,108,300
1.5	1,473,800	1,482,300	1,567,900	1,672,500	1,912,100	1,968,400	2,019,500	2,162,100	2,793,800	3,629,700
2	1,626,900	1,635,700	1,735,700	1,909,100	2,178,500	2,243,500	2,339,300	2,515,900	3,252,900	4,151,100
Documents from 2.5kg and non-documents from 0.5kg										
0.5	1,207,200	1,319,500	1,416,800	1,425,100	1,623,000	1,623,800	1,635,600	1,638,700	1,970,700	2,755,700
1	1,358,000	1,466,400	1,649,000	1,660,000	1,880,200	1,885,200	1,898,800	1,999,200	2,426,700	3,275,000
1.5	1,508,700	1,613,300	1,822,900	1,894,800	2,137,500	2,199,500	2,241,900	2,346,700	2,879,300	3,794,300
2	1,659,400	1,760,200	1,996,800	2,129,600	2,394,800	2,513,800	2,585,000	2,694,200	3,331,900	4,313,600
2.5	1,827,300	1,917,900	2,183,000	2,377,800	2,666,900	2,787,500	2,944,800	3,058,900	3,806,100	4,860,200
3	1,958,800	2,042,500	2,330,500	2,600,200	2,925,500	3,053,600	3,249,600	3,378,500	4,235,200	5,354,800
3.5	2,090,300	2,167,100	2,478,000	2,822,600	3,184,100	3,319,700	3,554,400	3,698,100	4,664,300	5,849,400
4	2,221,800	2,291,700	2,625,500	3,045,000	3,442,700	3,585,800	3,859,200	4,017,700	5,093,400	6,344,000
4.5	2,353,300	2,416,300	2,773,000	3,267,400	3,701,300	3,851,900	4,164,000	4,337,300	5,522,500	6,838,600
5	2,484,800	2,540,900	2,920,500	3,489,800	3,959,900	4,118,000	4,468,800	4,656,900	5,951,600	7,333,200
5.5	2,602,800	2,658,700	3,030,700	3,701,800	4,205,000	4,377,500	4,730,200	4,930,400	6,358,100	7,800,300
6	2,720,800	2,776,500	3,140,900	3,913,800	4,450,100	4,637,000	4,991,600	5,203,900	6,764,600	8,267,400
6.5	2,838,800	2,894,300	3,251,100	4,125,800	4,695,200	4,896,500	5,253,000	5,477,400	7,171,100	8,734,500
7	2,956,800	3,012,100	3,361,300	4,337,800	4,940,300	5,156,000	5,514,400	5,750,900	7,577,600	9,201,600
7.5	3,074,800	3,129,900	3,471,500	4,549,800	5,185,400	5,415,500	5,775,800	6,024,400	7,984,100	9,668,700
8	3,192,800	3,247,700	3,581,700	4,761,800	5,430,500	5,675,000	6,037,200	6,297,900	8,390,600	10,135,800
8.5	3,310,800	3,365,500	3,691,900	4,973,800	5,675,600	5,934,500	6,298,600	6,571,400	8,797,100	10,602,900
9	3,428,800	3,483,300	3,802,100	5,185,800	5,920,700	6,194,000	6,560,000	6,844,900	9,203,600	11,070,000
9.5	3,546,800	3,601,100	3,912,300	5,397,800	6,165,800	6,453,500	6,821,400	7,118,400	9,610,100	11,537,100
10	3,664,800	3,718,900	4,022,500	5,609,800	6,410,900	6,713,000	7,082,800	7,391,900	10,016,600	12,004,200
11	3,806,800	3,866,700	4,262,900	5,870,000	6,646,100	6,952,800	7,364,400	7,714,700	10,515,000	12,689,200
12	3,948,800	4,014,500	4,503,300	6,130,200	6,881,300	7,192,600	7,646,000	8,037,500	11,013,400	13,374,200
13	4,090,800	4,162,300	4,743,700	6,390,400	7,116,500	7,432,400	7,927,600	8,360,300	11,511,800	14,059,200
14	4,232,800	4,310,100	4,984,100	6,650,600	7,351,700	7,672,200	8,209,200	8,683,100	12,010,200	14,744,200
15	4,374,800	4,457,900	5,224,500	6,910,800	7,586,900	7,912,000	8,490,800	9,005,900	12,508,600	15,429,200
16	4,516,800	4,605,700	5,464,900	7,171,000	7,822,100	8,151,800	8,772,400	9,328,700	13,007,000	16,114,200
17	4,658,800	4,753,500	5,705,300	7,431,200	8,057,300	8,391,600	9,054,000	9,651,500	13,505,400	16,799,200
18	4,800,800	4,901,300	5,945,700	7,691,400	8,292,500	8,631,400	9,335,600	9,974,300	14,003,800	17,484,200

Table continues overleaf

ZONES AND RATES

Calculate the Price
of Your Shipment

Optional
Services

Surcharges

Customs
Services

Service Capability
and Rating Zones

Export
Services

Import
Services

Export rates by zone and product

DHL EXPRESS WORLDWIDE

Weight in kg	Zone 1	Zone 2	Zone 3	Zone 4	Zone 5	Zone 6	Zone 7	Zone 8	Zone 9	Zone 10
19	4,942,800	5,049,100	6,186,100	7,951,600	8,527,700	8,871,200	9,617,200	10,297,100	14,502,200	18,169,200
20	5,084,800	5,196,900	6,426,500	8,211,800	8,762,900	9,111,000	9,898,800	10,619,900	15,000,600	18,854,200
21	5,233,400	5,392,100	6,680,900	8,437,400	8,971,100	9,583,400	10,327,400	11,022,300	15,590,600	19,649,800
22	5,382,000	5,587,300	6,935,300	8,663,000	9,179,300	10,055,800	10,756,000	11,424,700	16,180,600	20,445,400
23	5,530,600	5,782,500	7,189,700	8,888,600	9,387,500	10,528,200	11,184,600	11,827,100	16,770,600	21,241,000
24	5,679,200	5,977,700	7,444,100	9,114,200	9,595,700	11,000,600	11,613,200	12,229,500	17,360,600	22,036,600
25	5,827,800	6,172,900	7,698,500	9,339,800	9,803,900	11,473,000	12,041,800	12,631,900	17,950,600	22,832,200
26	5,976,400	6,368,100	7,952,900	9,565,400	10,012,100	11,945,400	12,470,400	13,034,300	18,540,600	23,627,800
27	6,125,000	6,563,300	8,207,300	9,791,000	10,220,300	12,417,800	12,899,000	13,436,700	19,130,600	24,423,400
28	6,273,600	6,758,500	8,461,700	10,016,600	10,428,500	12,890,200	13,327,600	13,839,100	19,720,600	25,219,000
29	6,422,200	6,953,700	8,716,100	10,242,200	10,636,700	13,362,600	13,756,200	14,241,500	20,310,600	26,014,600
30	6,570,800	7,148,900	8,970,500	10,467,800	10,844,900	13,835,000	14,184,800	14,643,900	20,900,600	26,810,200
For each additional 1kg										
30.1 - 70.0	214,600	234,800	289,900	344,500	358,400	456,300	466,700	482,900	679,200	906,000
70.1 - 300.0	215,600	235,300	294,600	346,400	363,000	419,200	445,900	484,600	680,100	906,400
300.1 - 3,000*	226,500	235,400	302,300	378,800	396,100	419,200	457,700	503,800	685,800	993,800

DHL Express 12:00 – Guaranteed delivery before 12:00 on the next possible working day to over 75 countries worldwide.

Add VND 450,000 to the DHL Express Worldwide prices.

DHL Express 9:00 (10:30 to the USA) – Guaranteed delivery before 9:00 on the next possible working day to over 27 countries worldwide. Add VND 750,000 to the DHL Express Worldwide prices.

Weights are rounded up to the nearest 0.5kg for shipments up to 30kg, and to the nearest 1kg thereafter.

Rates are in VND and exclude customs duties, taxes, clearance-related charges, VAT and all surcharges. Terms and conditions apply – see mydhl.express.dhl for details.

*DHL Express does not accept shipments exceeding 3,000kg, or containing pieces exceeding 1,000kg or 300cm in length, and/or not meeting DHL standards for packing. Refer to our Packing Guide on mydhl.express.dhl. These network restrictions are subject to change with 30 days' notice.

ZONES AND RATES

Calculate the Price
of Your Shipment

Optional
Services

Surcharges

Customs
Services

Service Capability
and Rating Zones

Export
Services

Import
Services

Import rates by zone and product

DHL EXPRESS WORLDWIDE IMPORT

Weight in kg	Zone 1	Zone 2	Zone 3	Zone 4	Zone 5	Zone 6	Zone 7	Zone 8	Zone 9	Zone 10
Documents only up to 2kg										
0.5	1,401,100	1,410,600	1,425,500	1,439,300	1,655,200	1,701,800	1,716,500	1,741,600	2,254,700	3,104,300
1	1,584,800	1,594,700	1,680,100	1,723,100	1,974,900	2,031,900	2,039,700	2,170,000	2,801,700	3,730,000
1.5	1,768,500	1,778,800	1,881,500	2,007,000	2,294,600	2,362,000	2,423,500	2,594,600	3,352,600	4,355,700
2	1,952,200	1,962,900	2,082,900	2,290,900	2,614,300	2,692,100	2,807,300	3,019,200	3,903,500	4,981,400
Documents from 2.5kg and non-documents from 0.5kg										
0.5	1,448,600	1,583,400	1,700,200	1,710,100	1,947,600	1,948,600	1,962,700	1,966,400	2,364,800	3,306,800
1	1,629,600	1,759,700	1,978,800	1,992,000	2,256,200	2,262,300	2,278,500	2,399,000	2,912,000	3,930,000
1.5	1,810,400	1,936,000	2,187,500	2,273,800	2,565,000	2,639,500	2,690,200	2,816,000	3,455,100	4,553,200
2	1,991,200	2,112,300	2,396,200	2,555,600	2,873,800	3,016,700	3,101,900	3,233,000	3,998,200	5,176,400
2.5	2,192,700	2,301,500	2,619,600	2,853,400	3,200,300	3,345,100	3,533,700	3,670,600	4,567,200	5,832,300
3	2,350,500	2,451,000	2,796,600	3,120,300	3,510,600	3,664,400	3,899,500	4,054,100	5,082,100	6,425,800
3.5	2,508,300	2,600,500	2,973,600	3,387,200	3,820,900	3,983,700	4,265,300	4,437,600	5,597,000	7,019,300
4	2,666,100	2,750,000	3,150,600	3,654,100	4,131,200	4,303,000	4,631,100	4,821,100	6,111,900	7,612,800
4.5	2,823,900	2,899,500	3,327,600	3,921,000	4,441,500	4,622,300	4,996,900	5,204,600	6,626,800	8,206,300
5	2,981,700	3,049,000	3,504,600	4,187,900	4,751,800	4,941,600	5,362,700	5,588,100	7,141,700	8,799,800
5.5	3,123,300	3,190,400	3,636,800	4,442,300	5,045,900	5,253,000	5,676,400	5,916,300	7,629,500	9,360,300
6	3,264,900	3,331,800	3,769,000	4,696,700	5,340,000	5,564,400	5,990,100	6,244,500	8,117,300	9,920,800
6.5	3,406,500	3,473,200	3,901,200	4,951,100	5,634,100	5,875,800	6,303,800	6,572,700	8,605,100	10,481,300
7	3,548,100	3,614,600	4,033,400	5,205,500	5,928,200	6,187,200	6,617,500	6,900,900	9,092,900	11,041,800
7.5	3,689,700	3,756,000	4,165,600	5,459,900	6,222,300	6,498,600	6,931,200	7,229,100	9,580,700	11,602,300
8	3,831,300	3,897,400	4,297,800	5,714,300	6,516,400	6,810,000	7,244,900	7,557,300	10,068,500	12,162,800
8.5	3,972,900	4,038,800	4,430,000	5,968,700	6,810,500	7,121,400	7,558,600	7,885,500	10,556,300	12,723,300
9	4,114,500	4,180,200	4,562,200	6,223,100	7,104,600	7,432,800	7,872,300	8,213,700	11,044,100	13,283,800
9.5	4,256,100	4,321,600	4,694,400	6,477,500	7,398,700	7,744,200	8,186,000	8,541,900	11,531,900	13,844,300
10	4,397,700	4,463,000	4,826,600	6,731,900	7,692,800	8,055,600	8,499,700	8,870,100	12,019,700	14,404,800
11	4,568,100	4,640,400	5,115,000	7,044,100	7,975,000	8,343,400	8,837,700	9,257,500	12,617,700	15,226,800
12	4,738,500	4,817,800	5,403,400	7,356,300	8,257,200	8,631,200	9,175,700	9,644,900	13,215,700	16,048,800
13	4,908,900	4,995,200	5,691,800	7,668,500	8,539,400	8,919,000	9,513,700	10,032,300	13,813,700	16,870,800
14	5,079,300	5,172,600	5,980,200	7,980,700	8,821,600	9,206,800	9,851,700	10,419,700	14,411,700	17,692,800
15	5,249,700	5,350,000	6,268,600	8,292,900	9,103,800	9,494,600	10,189,700	10,807,100	15,009,700	18,514,800
16	5,420,100	5,527,400	6,557,000	8,605,100	9,386,000	9,782,400	10,527,700	11,194,500	15,607,700	19,336,800
17	5,590,500	5,704,800	6,845,400	8,917,300	9,668,200	10,070,200	10,865,700	11,581,900	16,205,700	20,158,800
18	5,760,900	5,882,200	7,133,800	9,229,500	9,950,400	10,358,000	11,203,700	11,969,300	16,803,700	20,980,800

Table continues overleaf

ZONES AND RATES

Calculate the Price
of Your Shipment

Optional
Services

Surcharges

Customs
Services

Service Capability
and Rating Zones

Export
Services

Import
Services

Import rates by zone and product

DHL EXPRESS WORLDWIDE IMPORT

Weight in kg	Zone 1	Zone 2	Zone 3	Zone 4	Zone 5	Zone 6	Zone 7	Zone 8	Zone 9	Zone 10
19	5,931,300	6,059,600	7,422,200	9,541,700	10,232,600	10,645,800	11,541,700	12,356,700	17,401,700	21,802,800
20	6,101,700	6,237,000	7,710,600	9,853,900	10,514,800	10,933,600	11,879,700	12,744,100	17,999,700	22,624,800
21	6,280,100	6,471,200	8,015,800	10,124,700	10,764,600	11,500,400	12,394,100	13,226,900	18,707,700	23,579,600
22	6,458,500	6,705,400	8,321,000	10,395,500	11,014,400	12,067,200	12,908,500	13,709,700	19,415,700	24,534,400
23	6,636,900	6,939,600	8,626,200	10,666,300	11,264,200	12,634,000	13,422,900	14,192,500	20,123,700	25,489,200
24	6,815,300	7,173,800	8,931,400	10,937,100	11,514,000	13,200,800	13,937,300	14,675,300	20,831,700	26,444,000
25	6,993,700	7,408,000	9,236,600	11,207,900	11,763,800	13,767,600	14,451,700	15,158,100	21,539,700	27,398,800
26	7,172,100	7,642,200	9,541,800	11,478,700	12,013,600	14,334,400	14,966,100	15,640,900	22,247,700	28,353,600
27	7,350,500	7,876,400	9,847,000	11,749,500	12,263,400	14,901,200	15,480,500	16,123,700	22,955,700	29,308,400
28	7,528,900	8,110,600	10,152,200	12,020,300	12,513,200	15,468,000	15,994,900	16,606,500	23,663,700	30,263,200
29	7,707,300	8,344,800	10,457,400	12,291,100	12,763,000	16,034,800	16,509,300	17,089,300	24,371,700	31,218,000
30	7,885,700	8,579,000	10,762,600	12,561,900	13,012,800	16,601,600	17,023,700	17,572,100	25,079,700	32,172,800
For each additional 1kg										
30.1 - 70.0	257,500	281,800	347,900	413,400	430,100	547,600	560,000	579,500	815,000	1,087,200
70.1 - 300.0	258,700	282,400	353,500	415,700	435,600	503,000	535,100	581,500	816,100	1,087,700
300.1 - 3,000*	271,800	282,500	362,800	454,600	475,300	503,000	549,200	604,600	823,000	1,192,600

DHL Express 12:00 – Guaranteed delivery before 12:00 on the next possible working day from over 75 countries worldwide.

Add VND 450,000 to the DHL Express Worldwide Import prices.

DHL Express 9:00 (10:30 from the USA) – Guaranteed delivery before 9:00 on the next possible working day from over 27 countries worldwide. Add VND 750,000 to the DHL Express Worldwide Import prices.

Weights are rounded up to the nearest 0.5kg for shipments up to 30kg, and to the nearest 1kg thereafter.

Rates are in VND and exclude customs duties, taxes, clearance-related charges, VAT and all surcharges.

Terms and conditions apply – see mydhl.express.dhl for details.

*DHL Express does not accept shipments exceeding 3,000kg, or containing pieces exceeding 1,000kg or 300cm in length, and/or not meeting DHL standards for packing. Refer to our Packing Guide on mydhl.express.dhl. These network restrictions are subject to change with 30 days' notice.

READY TO SHIP?

 **Get a quote**

 **1800 1530**

 **Chat**

 **Find your nearest DHL Service Point**

DHL Express
06 Thang Long Street, Ward 4
Tan Binh District
Ho Chi Minh City
Vietnam

Valid: 1st January 2023
For public use

The information in this guide is correct as of 1st January 2023. DHL reserves the right to amend or modify any of the information at any time.

