



DHL EXPRESS

SERVICE & RATE GUIDE 2023

ST. MAARTEN

GET STARTED

[Connecting Your World](#)

[Dear Customer](#)

[Sustainability](#)

[Service Offering](#)

[How to Ship with DHL Express](#)

[Digitalization](#)

[Zones and Rates](#)

Ready to ship?
Get a quote from [MyDHL+](#)



CONNECTING YOUR WORLD

Operating in
220+
countries and
territories worldwide



320+
aircraft



2,300+
flights per day



34,600+
vehicles



3,400+
facilities



111,800+
Service Points

By the year 2050,
Deutsche Post DHL Group
aims to achieve net zero
emissions logistics

MISSION 2050
ZERO EMISSIONS
GOGREEN

523
million+
shipments per year



120,000+
employees

 **370+**
TAPA* certifications



Figures are global and are approximate as of the end of 2021
*TAPA = Transported Asset Protection Association

DEAR CUSTOMER

Welcome to the DHL Express Service and Rate Guide 2023. Use this guide to learn how DHL Express products, services and tools can meet your logistics needs. DHL Express is the global market leader and a specialist in Time Definite International (TDI) shipping and courier delivery. We have been building and continuously improving for over 50 years through our team of 120,000 Certified International Specialists, helping more than 2.7 million customers globally.

The world has been buffeted by COVID-19 since 2020. We are proud that DPDHL, having enabled supply chains to move more than 2.5 billion vaccine doses so far, continues to contribute to the solution – and we are adapting every day to a still-evolving situation. Apart from the pandemic, the Ukraine crisis has also added material complexity to global logistics.

In response to these and other uncontrollable events, we continue to make significant **investments** to reinforce the resilience of our global network and secure critical supply chains – thereby continuing to prove our ability to offer reliable services to our customers globally. As an example, we invested in the expansion of our air network, with new airline collaborations with Cargojet and Singapore Airlines in addition to the acquisition of six Boeing 777F aircraft. Investments like these allow us to grow the DHL network and improve service quality for you – our customer.

Environmental responsibility continues to be a pillar of our long-term strategy through the DPDHL Sustainability Roadmap. In 2022 we signed ground-breaking agreements with bp and Neste to increase our use of Sustainable Aviation Fuel (SAF). We continue to accelerate the electrification of our last-mile fleet while investing in next-generation technology such as the all-electric Alice airplane, designing and constructing carbon neutral buildings and offering a portfolio of green products. Read more about this on page 4 and on the DPDHL Sustainability portal.

As part of Strategy 2025, we continue to earmark **Digitalization** – which we define as the conscious application of technology and enablement of people, as a means to improve – as a key enabler to reach the next level of excellence for our customers, for our employees and to drive operational efficiency. Read about some of the key developments on pages 15 and 16 and how they benefit you. Try some of them out at MyDHL+ if you haven't already!

We strive to successfully continue our partnership and remain committed to supporting your business anytime and anywhere. **Globalization** remains a powerful force and we invite you to read the first edition of the global DHL Trade Growth Atlas report, which we hope will become a go-to resource for understanding and navigating shifts in the global trade landscape – see page 7 for more. Thank you for trusting us to be your Logistics Partner of Choice! Tell us how we can support you further – please reach out to us on MyDHL+ or by calling Customer Service on +1 (721) 544-5080.

Sincerely,

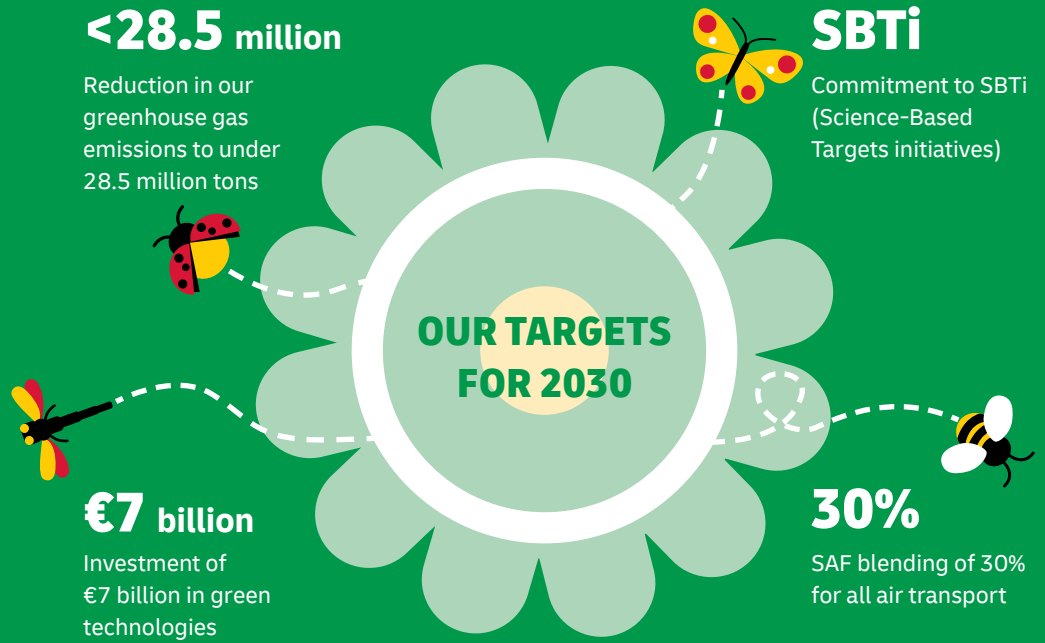
Giancarlo Lolli
DHL Express St. Maarten



Connecting Your World
▶ Sustainability
Service Offering
How to Ship with DHL Express
Digitalization
Zones and Rates

SUSTAINABILITY

Everything we do is to serve one purpose: **Connecting people, improving lives.** To fulfill this purpose, we need to make every dimension of our business sustainable. Our Sustainability Roadmap sets out our ambitions in three focus areas: Environment, Social and Governance (ESG). Find case studies and more details [here](#).



CLEAN OPERATIONS FOR CLIMATE PROTECTION



Leader in sustainable aviation

Sustainable Airline Fuel (SAF), one of the key ways to reduce CO₂ in aviation, is already in use in our network. Two landmark collaborations signed by DHL Express with bp and Neste in 2022 are expected to save some **two million tons** of carbon dioxide emissions over the aviation fuel cycle – equivalent to the annual greenhouse gas emissions of approx. 400,000 passenger cars. In this way, we are making significant steps towards our commitment to use **30%** of SAF blending for all air transport by 2030.

Looking even further ahead, DHL is already pioneering next-generation innovations: [read more about Alice](#), the all-electric plane.



Green last-mile and line-haul

Electrify **60%** of last-mile delivery vehicles and increase share of sustainable fuels in line haul to more than **30%** by 2030.



Carbon neutral buildings

Design **100%** of all new buildings to be carbon neutral.



Green product portfolio

Offer green alternatives for **100%** of all core products and solutions.

GREAT COMPANY TO WORK FOR ALL

- Attract and retain the best talent
- Strong 'Safety First' culture
- Diverse and inclusive workplace

HIGHLY TRUSTED COMPANY

- Compliance as an integral part of daily business
- Effective governance set-up across our organization
- Like-minded and compliant suppliers and partners



SERVICE OFFERING

[Connecting Your World](#)
[Sustainability](#)
[▶ Service Offering](#)
[How to Ship with DHL Express](#)
[Digitalization](#)
[Zones and Rates](#)
[Export Services](#)
[Import Services](#)
[Domestic Services](#)
[Enabling Your Growth](#)
[Optional Services](#)
[Surcharges](#)
[Customs Services](#)

Our core services are Time Definite International (TDI) and offer you secure door-to-door delivery of goods and documents to and from virtually every country and territory. Whether you need your shipments delivered at the start, middle or end of a business day, our services offer full track-and-trace visibility so you always know where your shipments are.

EXPORT SERVICES

DHL Express Worldwide

Our most popular product, DHL Express Worldwide, offers an end of business day delivery service around the world for pieces up to 150 lb and shipments up to 6,600 lb.

We deliver reliably and quickly to more global destinations across a single integrated network than any other express delivery company.

DHL Express 12:00

With DHL Express 12:00 you will receive your shipments before 12 noon on the next possible business day. DHL Express 12:00 offers a money-back guarantee* and allows for pieces up to 150 lb and shipments up to 660 lb.

DHL Express 9:00 (10:30 to the USA)

Our premium time-definite service offers a delivery before 9:00 (10:30 to the USA) on lanes that guarantee either a next or second business day delivery. DHL Express 9:00 is offered to the majority of business centers in Europe, the Middle East, Africa, Asia and the Americas. DHL Express 9:00 features a money-back guarantee* and is suitable for pieces up to 66 lb and shipments up to 660 lb.

Our international services at a glance

	DHL Express Worldwide	DHL Express 12:00	DHL Express 9:00 (10:30 to the USA)
Service description	Delivery by the end of the next possible business day	Delivery before 12 noon on the next possible business day	Delivery before 9:00 (10:30 to the USA) on the next possible business day
Money-back guarantee	No	Yes*	Yes*
Countries and territories covered	More than 220	147	89
Delivery attempts	2	2	2
Maximum piece weight (not on pallet)	150 lb	150 lb	66 lb
Maximum pieces per shipment	–	10	10
Maximum piece dimensions (L x W x H)**	47.2 x 31.5 x 31.5 in	47.2 x 31.5 x 31.5 in	47.2 x 31.5 x 31.5 in
Maximum pallet weight	2,200 lb	Pallets not accepted	Pallets not accepted
Maximum shipment weight	6,600 lb	660 lb	660 lb
Maximum pallet dimensions (L x W x H)	118 x 79 x 63 in	Pallets not accepted	Pallets not accepted

*Additional terms and conditions apply – see mydhl.express.dhl for details.

**A shipment is deemed unacceptable if its packaging is absent or inadequate, or if transporting the shipment would present risks of damaging equipment, other packages or injuring personnel. DHL reserves the right to either not accept or return the shipment to the shipper. These network restrictions are subject to change with 30 days' notice.

SERVICE OFFERING

[Connecting Your World](#)

[Sustainability](#)

[▶ Service Offering](#)

[How to Ship with DHL Express](#)

[Digitalization](#)

[Zones and Rates](#)

[Export Services](#)
[Import Services](#)
[Domestic Services](#)
[Enabling Your Growth](#)
[Optional Services](#)
[Surcharges](#)
[Customs Services](#)

IMPORT SERVICES

With the DHL Express Worldwide Import product, you can import shipments from over 220 countries and territories in the world. This is more than any other express delivery company can offer. What's more, customers in, say, the USA can order an import from China not just to the USA, but to any other destinations as well – we call this a Third Country shipment.

You are in full control, and able to manage all aspects of your imports in a very simple way. For your peace of mind, we provide a wide range of customs support and services.

If you need a faster delivery, our DHL Express 12:00 and DHL Express 9:00 services are available for import as well. You can order an import from another country, to be delivered to your country or any other destination, by using our dedicated electronic shipping solution for imports. You will have one account number, one invoice in a single currency and a fixed price that means you know exactly what you will pay.

DOMESTIC SERVICES

If you want to ship documents or goods within your own country, we can offer our Time Definite Domestic products with delivery time guarantee of the end of the next possible business day.



SERVICE OFFERING

[Connecting Your World](#)
[Sustainability](#)
[▶ Service Offering](#)
[How to Ship with DHL Express](#)
[Digitalization](#)
[Zones and Rates](#)
[Export Services](#)
[Import Services](#)
[Domestic Services](#)
[Enabling Your Growth](#)
[Optional Services](#)
[Surcharges](#)
[Customs Services](#)

GLOBAL TRADE AND YOU

A series of crises has put international trade at the center of the debate about economic growth and resilience. What are the current prospects for globalization and trade? Is there cause for concern? Is trade still an attractive source of growth? We deep dived into the data and conducted a thorough, fact-based analysis – and the results might just surprise you. In partnership with NYU Stern's Center for the Future of Management and its DHL Initiative on Globalization, the 'DHL Trade Growth Atlas' examines global trade growth trends and the trade patterns of 173 countries worldwide that combined make up more than 99% of world trade, GDP and population. Despite recent shocks and worsening macroeconomic conditions in much of the world, the study overall gives an upbeat assessment of the prospects for future trade growth.

We know the value of understanding the long-term global trade landscape for navigating short-term shifts in economic and trade growth. We help our customers make sense of what this means for their business to maximize the enormous potential of globalization and international trade.

Global trade surprisingly resilient through COVID-19 pandemic

Trade likely to grow faster in 2022 and 2023 than in previous decade

Shift in mix of products traded by advanced vs. emerging economies



POWERING UP THE POTENTIAL OF INTERNATIONAL E-COMMERCE

Discover and grow

Visit dhl.com/discover to learn more about how DHL helps e-commerce companies ranging from start-ups to large enterprises, advising them on how to grow internationally. Our e-commerce focussed country guides, white papers such as 'The Ultimate B2B E-Commerce Guide', customer and trend research and market intelligence tools can enable you to better understand your customers and their shipping requirements to take the next step in your e-commerce journey.

International e-commerce

We help our customers go global with ease and speed to maximize the enormous potential of international e-commerce. DHL supports our customers' international growth with:

- Global reach
- Express delivery options
- Flexible delivery options for receivers (see 'On Demand Delivery' on page 15)
- Duty billing options and customs expertise
- Consultative advice for our customers on how to increase sales and grow cross-border

Fast, flexible and easy

Consumers expect everything 'on demand' – anytime, anywhere. DHL shipping options give customers a distinct competitive edge: over 90% of online consumers look at the available delivery options before going to the checkout, and their decision is influenced by delivery speed, flexibility and ease.



SERVICE OFFERING

 Connecting Your World

 Sustainability

 ▶ Service Offering

 How to Ship with DHL Express

 Digitalization

 Zones and Rates

 Export
Services

 Import
Services

 Domestic
Services

 Enabling Your
Growth

 Optional
Services

Surcharges

 Customs
Services

OPTIONAL SERVICES

[View charges](#)

DHL Express offers a wide range of optional services – from non-standard deliveries and billing options to climate neutral shipping.

Dedicated Pickup and Delivery

If your business needs a dedicated vehicle to collect or deliver unusual shipments, or a pickup or delivery outside normal business hours, we can arrange this.

Shipment Preparation

This is a convenient, fast and reliable service for seasonal or irregular shipments that require extra resources for their preparation. DHL manages the entire process of waybill preparation, content selection, labeling and packaging, then sends the shipments to the designated addresses.

Saturday Delivery

We offer Saturday delivery services to key cities in more than 70 countries.

Shipment Value Protection

We recommend this comprehensive protection for your valuable or personal shipments, giving you peace of mind in the unlikely event of physical damage or loss.

Extended Liability

If you are sending valuable documents such as passports, visa applications or regulatory certificates you can extend the DHL standard liability with this service. It provides coverage and compensation in the case of loss or damage.

Direct Signature

If you are sending sensitive documents or high value contents you can request DHL to obtain a direct signature from the consignee or a representative at the delivery address. DHL will ensure your shipment is not re-directed, or delivered at an alternative address.

Printed Invoice

This service is for customers who require a paper invoice where e-billing is the agreed standard. This service provides flexibility for a different invoicing method than what is already agreed.

Residential Address

Customers shipping to a home or private residence can activate specific delivery options by designating the delivery address as residential. For such shipments, DHL Express will proactively notify the receiver via email or SMS about the shipment's progress. Receivers can then select the most suitable delivery option via [On Demand Delivery](#).

GoGreen Climate Neutral

This service is for customers who need a reliable method to calculate their annual carbon emissions at a shipment level and subsequently offset these emissions through approved environmental programs. The whole process is verified annually by an independent body accredited by the Société Générale de Surveillance (SGS). DHL can also provide reports for either a high level estimate or a detailed carbon footprint.

Change of Billing

This applies when a customer requests a change of defined billing information on an already issued invoice, which will result in a reissuing of the invoice and, in case of an account change, crediting of the old account and debiting of the new.

Neutral Delivery

This service allows for the delivery of non-document shipments, without any value of the product being shared or exposed to the receiver, since the commercial invoice is removed prior to delivery.

DUTY BILLING SERVICES

Duty Tax Paid

At the customer's request, DHL clears the shipment at destination and arranges for the applicable import duties, taxes and regulatory charges to be invoiced to a specified DHL account at origin or third country, rather than the receiver of the shipment being billed at destination. The duty tax payer will be invoiced an extra charge based on a flat rate or a percentage of the fiscal charges that were paid.

Duty Tax Importer

At the customer's request, DHL clears the shipment at destination and arranges for any applicable import duties, taxes and regulatory charges to be invoiced to the importer's specified DHL account at destination. The duty tax payer will be invoiced an extra charge based on a flat rate or a percentage of the fiscal charges that were advanced. The shipper must provide the importer's address details, tax ID and the account number to be billed.

For a full list of optional services, please visit mydhl.express.dhl.

SERVICE OFFERING

[Connecting Your World](#)
[Sustainability](#)
[▶ Service Offering](#)
[How to Ship with DHL Express](#)
[Digitalization](#)
[Zones and Rates](#)
[Export Services](#)
[Import Services](#)
[Domestic Services](#)
[Enabling Your Growth](#)
[Optional Services](#)
[Surcharges](#)
[Customs Services](#)

SURCHARGES

[View charges](#)

In order to maintain a consistently high level of service, in specific circumstances DHL Express levies a surcharge for exceptional activities, ensuring that these surcharges are fair for all of our customers.

Fuel Surcharge

This variable surcharge is applied to the weight charge of each shipment and any transportation related surcharges. It is derived from publicly available fuel oil indices that are also shown on the DHL Express website at mydhl.express.dhl. The charge is calibrated every month to the oil price that was current two months prior to the billing month.

Remote Area

This surcharge applies when a shipment is collected from or delivered to a location that is distant or difficult to serve.

Overweight Piece

A fixed surcharge is applied to every piece, including a pallet that exceeds a scale or volumetric weight of 150 lb.

Oversize Piece

This fixed surcharge applies to every piece, including a pallet, with a single dimension in excess of 48 in.

Non-Stackable Pallet

This fixed surcharge is applied to every pallet within a shipment that cannot be stacked, either on request by the shipper, or because of its shape, content or packaging. This surcharge does not apply to pieces below 66 lb.

Dangerous Goods

DHL can carry acceptable quantities of dangerous goods or hazardous materials. Packages containing dangerous goods materials will be assessed and a service charge will be applied accordingly. Additional charges may also apply.

Address Correction

This fixed surcharge is applied to any shipment that has an incorrect delivery address at the time of pickup and the delivery cannot be fulfilled after making efforts at the destination to determine the correct address.

Data Entry

This fixed surcharge applies for each shipment consigned with non-electronic, paper based manual waybills. Electronic shipping documentation incurs no additional charges.

Security Charges

Additional surcharges may apply when shipping from or to a destination country where DHL is operating at elevated risk due to continuous state of war, civil unrest, or continuous threats from terrorism (**Elevated Risk**), or when shipping from or to a destination country that is subject to trade restrictions imposed by the UN Security Council (**Restricted Destination**).

Emergency Situation

A temporary surcharge, which allows us to cover operating cost increases due to an emergency situation out of DHL's control. Change in market dynamics and air capacity availability is reflected through regular price adjustments.

Peak Season

A temporary surcharge, which allows us to cover part of the operating cost increases resulting from necessary network adjustments during Peak Season.

Bulk Packaging and Plastic Flyer Stack

Charges apply for all DHL standard packaging items including plastic flyers provided in bulk or stacks.



For a full list of surcharges, please visit mydhl.express.dhl.

SERVICE OFFERING

Export
Services

Import
Services

Domestic
Services

Enabling Your
Growth

Optional
Services

Surcharges

Customs
Services

CUSTOMS SERVICES

[View charges](#)

DHL Express is the international specialist in shipping, with extensive knowledge and experience of dealing with customs topics worldwide. For your peace of mind, we provide a wide range of customs support for standard as well as non-routine customs-clearance processes. By making sure that clearance is a smooth and efficient process, we ensure your shipments arrive as quickly as possible, and leave you free to focus on your core business. With our online tool (tas.dhl.com) we provide essential customs information to help you prepare your shipments.

Non-Routine Entry

Applies when shipments are subject to non-routine clearance procedures, due to their value, weight and/or commodity as defined by destination Customs Authorities. May also apply in selected countries where DHL is legally obliged to outsource formal clearance entries to a licensed third party broker.

Export Declaration

Applies in countries where an export declaration is required for shipments containing controlled commodities or exceeding a

certain weight. Depending on origin country, shippers that submit a declaration online may avoid the local charge.

Permits and Licenses

To accelerate import of selected controlled commodities, such as medical devices, pharmaceuticals, computer monitors, laser CD players, cosmetics, eyeglasses, food and food products, DHL is required to file specific information in order to obtain the required import permits or licenses.

Other Government Agency

At request, DHL will arrange the completion of Veterinary, Health or Phytosanitary controls at the First Point of Entry in a country or a Customs Union, typically required when importing animal products, plants, seeds, or pharmaceutical products.



For a full list of customs charges, please visit mydhl.express.dhl.

HOW TO SHIP WITH DHL EXPRESS

Preparing Your Shipment

Packaging Your Shipment

Paying for Your Shipment

PREPARING YOUR SHIPMENT: AS EASY AS 1-2-3

1 Shipment weight

- Please weigh and measure your shipment.
- If you are sending a large but lightweight shipment, where its volumetric (dimensional) weight exceeds its actual weight, the cost of the shipment is calculated on the space your consignment takes up on the aircraft. This is a standard IATA method. To calculate the volumetric weight of your shipment, simply multiply the length by height by width in inches, then divide the total sum by 139 for each piece in the shipment.
- Any piece in the shipment may be re-weighed and/or re-measured by DHL to confirm this calculation.

2 Documentation required: waybill

- All shipments sent with DHL Express need to have a fully completed DHL waybill or label securely attached to each piece. This will enable the successful movement of your shipment through the DHL network. Each waybill or label is individually numbered to allow you to track your shipment from collection through to delivery.
- Your shipment may also need to be accompanied by customs documentation, such as a commercial or proforma invoice, as well as additional paperwork depending on the contents and value of the shipment and the country you are sending to.

3 Documentation required: invoice

- A commercial or proforma invoice is required when sending non-document shipments to countries and territories outside your origin country or customs union. This is essentially a declaration containing all the details of a transaction and is used by customs authorities to assess if duties or taxes are payable.
- A commercial invoice is used when goods are part of a commercial transaction or intended for resale.
- A proforma invoice is used when sending goods of no commercial value (for example, when sending samples).



Connecting Your World
Sustainability
Service Offering
▶ How to Ship with DHL Express
Digitalization
Zones and Rates

HOW TO SHIP WITH DHL EXPRESS

Preparing Your Shipment

Packaging Your Shipment

Paying for Your Shipment

PREPARING YOUR SHIPMENT INVOICE

Your invoice will require the following details:

1. BANK DETAILS

These are the bank details that will be used for the transaction between the seller and buyer. These details are not required for non-commercial/proforma invoices.

2. DESCRIPTION

Generic or broad descriptions are no longer permitted and are likely to cause delays. Descriptions should include the items, how many there are, what they are made of, and what they will be used for. Describing items as ‘samples’, ‘parts’ or ‘electronics’ is not acceptable for customs classification, safety and security reasons. Instead of ‘electronics’, for example, use a description such as ‘television’.

3. COMMODITY CODE

This is the product identification code used by the exporting country to classify the goods to be exported. It assists clearance and avoids delays.

4. COUNTRY OF MANUFACTURE/ORIGIN

This relates to the place of manufacture, not the country of export. If items are manufactured in more than one country, please list the origins.

5. TOTAL DECLARED VALUE

This is the total value of the transaction for customs purposes based on the Incoterm selected. The total declared value should include freight and insurance charges if the seller is responsible for these two elements.

6. TYPE OF EXPORT

The options are: (1) Permanent; (2) Temporary; and (3) Repair & Return.

7. INCOTERM

Insert the Incoterm that best describes the terms of the transaction. For example, DAP (Delivered At Place).

8. REASON FOR EXPORT

This could be: For Sale; For Repair; After Repair; Gift; Sample; Personal Use Not For Resale; Replacement; Intercompany Transfer; or Personal Effects.

Commercial invoice

Bank details

1.

Importer (bill to)

Full description of goods	Commodity code	Item quantity	Unit value [Currency]	Subtotal value [Currency]	Net weight	Country of manufacture/origin
2.	3.					4.
Freight						
Insurance						
Total declared value/currency				Total net weight/lb(s)		
Total pieces				Total gross weight/lb(s)		

Exporter

Tax ID/VAT number

Date

Waybill number

Invoice number

Exporter code

Receiver if different from Importer

Tax ID/VAT number

Shipment reference

6. Type of export

7. Incoterms

8. Reason for export

I/We hereby certify that the information contained in this invoice is true and correct and that the contents of the shipments are as stated above.

Position in company

Signature

Company stamp



HOW TO SHIP WITH DHL EXPRESS

Preparing Your Shipment

Packaging Your Shipment

Paying for Your Shipment

PACKAGING YOUR SHIPMENT

To ensure that your shipments travel safely and securely through the DHL Express global network, it is important that they are packaged and labeled correctly.

Packaging guidelines

- If you are re-using envelopes or boxes, please ensure that old labels and markings are removed
- Securely fix a waybill to each piece in your shipment. The waybill can be thought of as the shipment's airline ticket and it will delay delivery if it becomes separated from your shipment
- The barcodes on the waybill are scanned at numerous points during your shipment's journey. Please ensure the barcode is flat and not covered by tape, shrinkwrap or strapping
- Place a waybill on the top or side of each piece in your shipment and please ensure it does not overlap the corners or edges of boxes
- Use adequate protective wrapping for fragile or delicate items and ensure they are packed as far away as possible from the corners of boxes
- To prevent injury to our employees, please pay special attention to the packaging of sharp items. There should not be any possibility of the contents piercing the packaging
- Any individual pieces over 150 lb should be placed on a pallet. If you are sending a multi-piece shipment, it is not necessary to place the individual pieces on a pallet unless they exceed 150 lb. For example, a shipment comprising four 55 lb pieces does not have to be placed on a pallet

DHL packaging

We offer a range of high-quality DHL-branded packaging items, suitable for shipping items of all shapes and sizes.

The items available include:

- Flyer bags
- Cardboard document envelopes
- Boxes in a range of sizes
- Tubes
- Bottle boxes

For more information please refer to the Packing Guide available on mydhl.express.dhl.

Prohibited and Restricted Commodities

Prohibited Items

The following items will NOT be accepted for carriage by DHL. This list includes items which are prohibited for carriage by any law, regulation or statute of any federal, state or local government of any country from, to or through which the items may be carried. For international carriage there may be additional prohibited items specified by the country of destination. DHL may at its sole discretion refuse to carry other items not listed below.

- Bullion (of any precious metal)
- Cannabis
- Cash (legal tender – bank notes, currency notes and coins)
- Complete firearms, ammunition, explosives/explosive devices including inert explosives and test pieces, air guns, replica and imitation firearms
- Human remains or ashes in any form
- Hunting (animal) trophies, animal parts such as ivory and shark's fin, animal remains or ashes, or animal by-products and derived products not intended for human consumption, prohibited for movement by the Convention on International Trade in Endangered Species of Wild Fauna and Flora (CITES) and/or local law
- Illegal goods, such as counterfeit goods and narcotics
- Live animals (including but not limited to mammals, reptiles, fish, invertebrates, amphibians, birds, insects, larvae and pupae)
- Loose lithium metal batteries under IATA PI968 section II
- Loose precious and semi-precious stones (cut or un-cut, polished or un-polished)



HOW TO SHIP WITH DHL EXPRESS

Preparing Your Shipment

Packaging Your Shipment

Paying for Your Shipment

Restricted Items

The following items will NOT be accepted for carriage unless otherwise agreed to by DHL. To obtain such agreement a business case will need to be conducted by DHL and the items approved for carriage will be recorded in writing with the customer.

- Air guns, tasers, imitation or replica firearms, firearm parts and replica ammunition (includes rifle butts, trigger mechanisms, screws/bolts etc which are manufactured for the sole purpose of creating a functional firearm)
- Antiques and works of art with a shipment value in excess of €500,000
- Banderols/Tax stickers with a shipment value in excess of €500,000
- Cigarettes, cigars, tobacco products and electronic cigarettes with a shipment value in excess of €500,000
- Commemorative coins and medals with an individual value or total shipment value of €2,000 or more are restricted for carriage
- Dangerous/hazardous goods including but not limited to perfumes, aftershaves, aerosols, flammable substances, dry ice, biological substances, UN classified dangerous goods and any goods specified as such under International Air Transport Association regulations (“IATA”), the

Agreement on Dangerous Goods by Road (“ADR”) or International Maritime Dangerous Goods (“IMDG”) regulations

- Financial and monetary commodities – examples include but are not limited to activated SIM cards for mobile phones, blank or activated credit or cash dispenser cards, blank checks, event tickets, lottery tickets, money or postal orders, pre-paid phone cards, tickets (blank stock), traveler’s checks, vouchers/tokens, unused stamps etc. Applicable to all shipments valued in excess of €500,000
- Furs
- Jewelry and watches and with individual values in excess of €5,000. The shipment must not exceed €100,000

PAYING FOR YOUR SHIPMENT

You can pay for DHL Express services either with cash, a credit card or by bank transfer. You can open an account with DHL Express to pay via bank transfer; and all account customers receive invoices on a pre-agreed basis. For more details, please get in touch with a Customer Service Advisor at your local DHL Express office or go to mydhl.express.dhl.



DIGITALIZATION

- Connecting your World
- Sustainability
- Service Offering
- How to Ship with DHL Express
- ▶ Digitalization
- Zones and Rates

Digitalization is one of the most important trends impacting logistics, and it is one of the key pillars of DPDHL’s Strategy 2025. Through digitalization we bring benefits for our customers, our operations and our own people.

We invest continually in market-leading technologies to help our customers to manage and monitor shipments, create shipping labels, get quotes, schedule courier pickups, connect with us and more. Digitalizing our operations provides more transparency, allowing us to better anticipate and meet our customers’ needs.

ON DEMAND DELIVERY

DHL’s On Demand Delivery tool keeps receivers informed of shipment progress, allowing them to reschedule, reroute, release or conveniently collect from a DHL Service Point. It is an innovative, easy-to-use, mobile-friendly service, especially for residential deliveries.



ondemand.dhl.com

Designed to enhance the online shopper’s experience, the service is available globally, meaning consistent service standards and a harmonized user experience.



Scheduled delivery



Signature release/leave your signature



Alternative address



Collect from Service Point



Vacation hold



Leave with neighbor or concierge

DHL EXPRESS COMMERCE

Take your website international with DHL Express Commerce. Offer your customers all the benefits of DHL Express at your checkout in real-time. Import, manage and ship their orders quickly and efficiently with no complicated development. Add the power of DHL Express to your e-commerce business quickly and easily, giving you the competitive edge. DHL Express Commerce integrates with the biggest e-commerce platforms, including: Magento, Shopify, WooCommerce, Amazon and eBay.

MYDHL+

mydhl.express.dhl

MyDHL+ re-imagines the way the shipping business does business, by combining the tools and services our customers use most. With its mobile friendly and intuitive interface, customers can now import, export, schedule a pickup, track shipments and pay bills more quickly than ever – all in one visit, with one password and zero headaches. MyDHL+ makes it incredibly easy to navigate the complexities of international shipping.



DHL EXPRESS MOBILE APP

The DHL Express Mobile app lets you track your shipments and manage your deliveries all in one place. You can locate the nearest DHL Service Point for parcel drop off or collection, and quickly check shipping rates too – right on your smartphone. Advanced GPS location services and camera barcode scanning are also available. Download DHL Express Mobile today, on Android or iOS.



DIGITALIZATION

 Connecting your World

 Sustainability

 Service Offering

 How to Ship with DHL Express

 ► Digitalization

 Zones and Rates

DIGITAL ASSISTANT

Our Digital Assistant is a live chat helpdesk that offers a 24/7 service across multiple online channels and platforms, and in 41 languages. It tracks your shipments, answers queries and directs you to FAQs.



[Chat with us now!](#)



ROBOTICS

Driven by rapid technological advancements and increasing supply chain complexity, robotics solutions are entering the logistics environment, boosting productivity and driving zero-defect processes.

Robots are adopting more roles at DHL Express, assisting workers with the most repetitive and labor-intensive tasks and freeing them up to do higher-order, customer-facing activities. Examples include the use of articulated robotic arms for sorting inbound packages to last-mile delivery routes. We have four such robots in use globally, with this number set to double soon.

Our robots help get couriers out on the road faster – which means your parcels get delivered faster.



DIGITAL TRUST

Logistics requires transferring data and content around the world and we embrace a responsibility to do this securely. Our standards led by our binding Corporate Rules and by our [Data Privacy Policy](#) apply throughout the DPDHL Group and are approved by the Supervisory Authorities. We maintain a comprehensive [Information Security](#) and [Data Protection](#) approach based on ISO/IEC 27001:2013 and GDPR, to ensure a high standard when managing customer information assets and personal data. We aim to provide a rapid response to any security incident via our 24x7 Cyber Defence Centre (CDC) with global coverage and our global DPO community.

DPDHL acts as controller in respect of any personal data it receives from customers and holds to effectively provide transportation services and in regard to the delivery of any shipments or documents that it processes to perform its contractual obligations. DPDHL will act as a data controller when an individual is executing their rights under privacy legislations.

CUSTOMER SHIPPING INTEGRATION

Using EDI and XML Services enables you to incorporate DHL's online shipping capabilities into your own website, warehouse or customer service application. This provides global shipment tracking while making it faster and easier to access information about transit times, rates and courier bookings.

SPECIFIC SOLUTIONS

DHL offers additional capabilities for businesses requiring more specialized solutions – for example, its Medical Express and Collect & Return services.

ZONES AND RATES

[Calculate the Price of Your Shipment](#)
[Optional Services](#)
[Surcharges](#)
[Customs Services](#)
[Service Capability and Rating Zones](#)
[Export Services](#)
[Import Services](#)
[Domestic Services](#)

CALCULATE THE PRICE OF YOUR SHIPMENT



Determine which zone your destination is in (page [19](#)) and whether yours is a document or non-document shipment.



Is your shipment international (page [5](#)) or domestic (page [6](#)) and how quickly do you want it to arrive?



Based on weight (page [11](#)), zone and speed, confirm your base price (page [21](#) for exports, page [23](#) for imports and page [25](#) for domestic services).



Add any optional services (page [8](#)) and check if any surcharges apply (page [9](#)).

Base price + Optional services + Surcharges = **Total price**

OPTIONAL SERVICES

[View explanation](#)

Optional services	Charging method	Charge
Dedicated Pickup	Per shipment	0.31 USD per lb with a minimum of 29.00 USD
Dedicated Delivery	Per shipment	0.31 USD per lb with a minimum of 59.00 USD
Shipment Preparation	Per shipment	31.00 USD
Saturday Delivery	Per shipment	60.00 USD
Shipment Value Protection	By shipment value	1% of shipment value with minimum charge of 14.00 USD
Extended Liability	Per shipment	5.00 USD
Direct Signature	Per shipment	7.00 USD
Printed Invoice	Per invoice	3.60 USD
Residential Address	Per shipment	8.00 USD
GoGreen Climate Neutral	Per shipment	0.14 USD per lb with a minimum of 0.14 USD
Change of Billing	Per invoice	36.05 USD
Neutral Delivery	Per shipment	27.00 USD
Duty Billing Services		
Duty Tax Paid	% of fiscal charges	2% of fiscal charges with minimum of 28.00 USD
Duty Tax Importer	% of fiscal charges	2% of fiscal charges with minimum of 22.13 USD

For a full list of optional services, please visit our website at mydhl.express.dhl.

ZONES AND RATES

[Calculate the Price of Your Shipment](#)
[Optional Services](#)
[Surcharges](#)
[Customs Services](#)
[Service Capability and Rating Zones](#)
[Export Services](#)
[Import Services](#)
[Domestic Services](#)

SURCHARGES

[View explanation](#)

Surcharges	Charging method	Charge
Fuel Surcharge	Per shipment	Percentage of transportation and additional charges, as per index; details here
Remote Area	Per shipment	International: 0.30 USD per lb with a minimum of 31.00 USD Domestic: 0.10 USD per lb with a minimum of 12.00 USD
Additional Handling		
Overweight Piece	Per piece	International: 96.90 USD Domestic: 50.00 USD
Oversize Piece	Per piece	International: 61.50 USD Domestic: 26.00 USD
Non-Stackable Pallet	Per piece	International: 250.00 USD Domestic: 125.00 USD
Dangerous Goods		
Full Dangerous Goods	Per piece	99.08 USD
Lithium Batteries Section II (966, 969)	Per piece	6.00 USD
Excepted Quantities	Per piece	6.01 USD
Limited Quantities	Per shipment	27.40 USD
Dry Ice (UN1845)	Per piece	14.33 USD
Address Correction	Per shipment	International: 15.00 USD Domestic: 6.00 USD
Data Entry	Per shipment	6.00 USD
Security Charges		
Elevated Risk	Per shipment	26.00 USD
Restricted Destination	Per shipment	40.00 USD
Packaging Items		
Plastic Flyers	Per stack	20.00 USD per stack (100 flyers)
Bulk Packaging	Per stack	Variable by packaging type and quantity

CUSTOMS SERVICES

[View explanation](#)

Customs services	Charging method	Charge
Non-Routine Entry	Per shipment	11.89 USD
Export Declaration	Per shipment	12.65 USD
Permits and Licenses	Per shipment	24.00 USD plus cost of certificate
Other Government Agency	Per shipment	36.00 USD plus cost of certificate

Please visit our website for a full list of [surcharges](#) and [customs services](#).

ZONES AND RATES

- Connecting Your World
- Sustainability
- Service Offering
- How to Ship with DHL Express
- Digitalization
- ▶ Zones and Rates

Calculate the Price of Your Shipment	Optional Services	Surcharges	Customs Services	Service Capability and Rating Zones	Export Services	Import Services	Domestic Services
--	-----------------------------------	----------------------------	----------------------------------	---	---------------------------------	---------------------------------	-----------------------------------

SERVICE CAPABILITY AND RATING ZONES

Country/Territory	Zone	DHL Express Worldwide	DHL Express 9:00	DHL Express 12:00	Imports
Afghanistan	7	✓			✓
Albania	5	✓		✓	✓
Algeria	7	✓		✓	✓
American Samoa	7	✓			✓
Andorra	5	✓		✓	✓
Angola	7	✓		✓	✓
Anguilla	1	✓			✓
Antigua	1	✓			✓
Argentina	3	✓	✓	✓	✓
Armenia	7	✓		✓	✓
Aruba	1	✓			✓
Australia	7	✓	✓	✓	✓
Austria	5	✓	✓	✓	✓
Azerbaijan	7	✓		✓	✓
Bahamas	1	✓			✓
Bahrain	7	✓	doc	✓	✓
Bangladesh	7	✓	✓	✓	✓
Barbados	1	✓		✓	✓
Belarus	5	✓		✓	✓
Belgium	5	✓	✓	✓	✓
Belize	1	✓			✓
Benin	7	✓		doc	✓
Bermuda	1	✓		✓	✓
Bhutan	7	✓			✓
Bolivia	3	✓		✓	✓
Bonaire	1	✓			✓
Bosnia and Herzegovina	5	✓		✓	✓
Botswana	7	✓	doc	doc	✓
Brazil	3	✓	✓	✓	✓
Brunei	7	✓		doc	✓
Bulgaria	5	✓		✓	✓
Burkina Faso	7	✓		doc	✓
Burundi	7	✓			✓
Cambodia	7	✓		✓	✓
Cameroon	7	✓		✓	✓
Canada	3	✓	✓	✓	✓
Canary Islands, The	5	✓	✓	✓	✓
Cape Verde	7	✓			✓
Cayman Islands	1	✓	doc	✓	✓
Central African Republic	7	✓			✓
Chad	7	✓			✓
Chile	3	✓		✓	✓
China, People's Republic	6	✓	✓	✓	✓
Colombia	3	✓	✓	✓	✓
Comoros	7	✓			✓
Congo	7	✓			✓
Congo, Democratic Rep. Of	7	✓		doc	✓
Cook Islands	7	✓			✓
Costa Rica	3	✓		✓	✓
Cote d'Ivoire	7	✓	doc	✓	✓
Croatia	5	✓	✓	✓	✓
Cuba	3	✓			✓
Curacao	1	✓	doc	✓	✓
Cyprus	7	✓	doc	doc	✓
Czech Republic, The	5	✓	✓	✓	✓
Denmark	5	✓	✓	✓	✓
Djibouti	7	✓			✓
Dominica	1	✓			✓
Dominican Republic	1	✓	doc	✓	✓

Country/Territory	Zone	DHL Express Worldwide	DHL Express 9:00	DHL Express 12:00	Imports
Ecuador	3	✓	✓	✓	✓
Egypt	7	✓	doc	✓	✓
El Salvador	3	✓		✓	✓
Eritrea	7	✓			✓
Estonia	5	✓	✓	✓	✓
Eswatini	7	✓		✓	✓
Ethiopia	7	✓			✓
Falkland Islands	3	✓			✓
Faroe Islands	5	✓			✓
Fiji	7	✓			✓
Finland	5	✓	✓	✓	✓
France	4	✓	✓	✓	✓
French Guyana	1	✓			✓
Gabon	7	✓		doc	✓
Gambia	7	✓			✓
Georgia	5	✓		✓	✓
Germany	5	✓	✓	✓	✓
Ghana	7	✓		✓	✓
Gibraltar	7	✓		✓	✓
Greece	5	✓	✓	✓	✓
Greenland	7	✓			✓
Grenada	1	✓			✓
Guadeloupe	1	✓		✓	✓
Guam	7	✓			✓
Guatemala	3	✓	✓	✓	✓
Guernsey	5	✓	✓	✓	✓
Guinea Republic	7	✓		doc	✓
Guinea-Bissau	7	✓			✓
Guinea-Equatorial	7	✓			✓
Guyana (British)	1	✓			✓
Haiti	1	✓		✓	✓
Honduras	3	✓		✓	✓
Hong Kong SAR China	6	✓	✓	✓	✓
Hungary	5	✓	✓	✓	✓
Iceland	5	✓	✓	✓	✓
India	6	✓	✓	✓	✓
Indonesia	7	✓	✓	✓	✓
Iran, Islamic Rep. of	7	✓			✓
Iraq	7	✓			✓
Ireland, Rep. of	5	✓	✓	✓	✓
Israel	7	✓	✓	✓	✓
Italy	5	✓	✓	✓	✓
Jamaica	1	✓		✓	✓
Japan	6	✓	✓	✓	✓
Jersey	5	✓	✓	✓	✓
Jordan	7	✓	✓	✓	✓
Kazakhstan	7	✓	✓	✓	✓
Kenya	7	✓	doc	✓	✓
Kiribati	7	✓			✓
Korea, D.P.R. of (North)	7	✓			✓
Korea, Rep. of (South)	6	✓	✓	✓	✓
Kosovo	5	✓			✓
Kuwait	7	✓	✓	✓	✓
Kyrgyzstan	7	✓		✓	✓
Lao P.D.R.	7	✓			✓
Latvia	5	✓		✓	✓
Lebanon	7	✓	✓	✓	✓
Lesotho	7	✓	doc	✓	✓
Liberia	7	✓			✓

doc = document contents only ✓ = document and non-document contents

Table continues overleaf

For transit times and the availability of DHL Express 12:00 and DHL Express 9:00 for your origin and destination address, please refer to the DHL Capability Tool at dct.dhl.com. Pieces with a single base length up to 120 in are accepted. Additional surcharges may apply.

ZONES AND RATES

- Connecting Your World
- Sustainability
- Service Offering
- How to Ship with DHL Express
- Digitalization
- ▶ Zones and Rates

- Calculate the Price of Your Shipment
- Optional Services
- Surcharges
- Customs Services
- Service Capability and Rating Zones
- Export Services
- Import Services
- Domestic Services

SERVICE CAPABILITY AND RATING ZONES

Country/Territory	Zone	DHL Express Worldwide	DHL Express 9:00	DHL Express 12:00	Imports
Libya	7	✓			✓
Liechtenstein	5	✓			✓
Lithuania	5	✓	doc	✓	✓
Luxembourg	5	✓	✓	✓	✓
Macau SAR China	6	✓	✓	✓	✓
Madagascar	7	✓		✓	✓
Malawi	7	✓			✓
Malaysia	6	✓	✓	✓	✓
Maldives	7	✓			✓
Mali	7	✓			✓
Malta	5	✓	doc	doc	✓
Marshall Islands	7	✓			✓
Martinique	1	✓			✓
Mauritania	7	✓			✓
Mauritius	7	✓		✓	✓
Mayotte	7	✓			✓
Mexico	3	✓	✓	✓	✓
Micronesia, Fed. States of	7	✓			✓
Moldova, Rep. of	5	✓		✓	✓
Monaco	4	✓			✓
Mongolia	7	✓			✓
Montenegro, Rep. of	5	✓		✓	✓
Montserrat	1	✓			✓
Morocco	7	✓	✓	✓	✓
Mozambique	7	✓		doc	✓
Myanmar	7	✓		✓	✓
Namibia	7	✓		doc	✓
Nauru, Rep. of	7	✓			✓
Nepal	7	✓		doc	✓
Netherlands, The	5	✓	✓	✓	✓
Nevis	1	✓			✓
New Caledonia	7	✓			✓
New Zealand	7	✓	✓	✓	✓
Nicaragua	3	✓		✓	✓
Niger	7	✓			✓
Nigeria	7	✓	✓	✓	✓
Niue	7	✓			✓
North Macedonia	5	✓		✓	✓
Northern Mariana Islands	7	✓			✓
Norway	5	✓	✓	✓	✓
Oman	7	✓	✓	✓	✓
Pakistan	7	✓	✓	✓	✓
Palau	7	✓			✓
Panama	3	✓	✓	✓	✓
Papua New Guinea	7	✓			✓
Paraguay	3	✓	✓	✓	✓
Peru	3	✓	✓	✓	✓
Philippines, The	6	✓	✓	✓	✓
Poland	5	✓	✓	✓	✓
Portugal	5	✓	✓	✓	✓
Puerto Rico	2	✓			✓
Qatar	7	✓	✓	✓	✓
Reunion, Island of	7	✓		✓	✓
Romania	5	✓	✓	✓	✓
Russian Federation, The	7	✓	✓	✓	✓
Rwanda	5	✓			✓
Samoa	7	✓			✓
San Marino	5	✓		✓	✓
Sao Tome & Principe	7	✓			✓

Country/Territory	Zone	DHL Express Worldwide	DHL Express 9:00	DHL Express 12:00	Imports
Saudi Arabia	7	✓	✓	✓	✓
Senegal	7	✓		✓	✓
Serbia, Rep. of	5	✓		✓	✓
Seychelles	7	✓			✓
Sierra Leone	7	✓		doc	✓
Singapore	6	✓	✓	✓	✓
Slovakia	5	✓	✓	✓	✓
Slovenia	5	✓	✓	✓	✓
Solomon Islands	7	✓			✓
Somalia	7	✓			✓
Somaliland, Rep. (N. Somalia)	7	✓			✓
South Africa	7	✓	✓	✓	✓
South Sudan	7	✓			✓
Spain	5	✓	✓	✓	✓
Sri Lanka	7	✓	✓	✓	✓
St. Barthelemy	1	✓		✓	✓
St. Eustatius	1	✓			✓
St. Helena	7	✓		✓	✓
St. Kitts	1	✓		✓	✓
St. Lucia	1	✓			✓
St. Maarten		✓	✓	✓	✓
St. Vincent	1	✓			✓
Sudan	7	✓		doc	✓
Suriname	1	✓			✓
Sweden	5	✓	✓	✓	✓
Switzerland	5	✓	✓	✓	✓
Syria	7	✓			✓
Tahiti	7	✓			✓
Taiwan	6	✓	✓	✓	✓
Tajikistan	7	✓			✓
Tanzania	7	✓	doc	doc	✓
Thailand	6	✓	✓	✓	✓
Timor-Leste	7	✓			✓
Togo	7	✓			✓
Tonga	7	✓			✓
Trinidad and Tobago	1	✓		✓	✓
Tunisia	7	✓			✓
Turkey	7	✓	✓	✓	✓
Turkmenistan	7	✓		✓	✓
Turks and Caicos Islands	1	✓			✓
Tuvalu	7	✓			✓
Uganda	7	✓	doc	doc	✓
Ukraine	5	✓	✓	✓	✓
United Arab Emirates	7	✓	✓	✓	✓
United Kingdom	5	✓	✓	✓	✓
United States of America	3	✓	10:30	✓	✓
USA - Miami Area	2	✓	10:30	✓	✓
USA - New York Area	3	✓	10:30	✓	✓
Uruguay	3	✓		✓	✓
Uzbekistan	7	✓		✓	✓
Vanuatu	7	✓			✓
Vatican City	5	✓			✓
Venezuela	3	✓		✓	✓
Vietnam	7	✓	✓	✓	✓
Virgin Islands (British)	1	✓	✓	✓	✓
Virgin Islands (US)	3	✓			✓
Yemen, Rep. of	7	✓			✓
Zambia	7	✓		✓	✓
Zimbabwe	7	✓			✓

doc = document contents only ✓ = document and non-document contents

For transit times and the availability of DHL Express 12:00 and DHL Express 9:00 for your origin and destination address, please refer to the DHL Capability Tool at dct.dhl.com. Pieces with a single base length up to 120 in are accepted. Additional surcharges may apply.

ZONES AND RATES

Calculate the Price
of Your Shipment

Optional
Services

Surcharges

Customs
Services

Service Capability
and Rating Zones

Export
Services

Import
Services

Domestic
Services

Export rates by zone and product

DHL EXPRESS WORLDWIDE

Weight in lb	Zone 1	Zone 2	Zone 3	Zone 4	Zone 5	Zone 6	Zone 7
Documents only up to 4 lb							
1	64.91	82.49	95.67	94.13	116.81	117.82	122.51
2	71.99	93.67	112.31	110.27	133.91	137.47	145.30
3	79.07	104.86	128.97	126.42	151.01	157.12	168.09
4	86.15	116.05	145.63	142.57	168.11	176.77	190.88
Documents from 4 lb and non-documents from 1 lb							
1	76.93	87.50	101.63	103.54	122.51	123.93	125.07
2	84.06	98.70	118.40	118.32	138.17	142.13	147.86
3	91.19	109.88	135.20	133.13	153.86	160.33	170.65
4	98.32	121.06	152.00	147.94	169.55	178.53	193.44
5	105.45	132.24	167.38	162.74	182.38	196.88	213.40
6	112.58	142.02	182.76	177.54	195.21	215.24	233.36
7	119.71	151.80	198.14	192.34	208.04	233.60	253.32
8	126.84	161.58	213.52	207.14	220.87	251.96	273.28
9	133.97	171.36	228.90	221.94	233.70	270.32	293.24
10	141.10	181.14	244.28	236.74	246.53	288.68	313.20
11	146.81	189.53	259.66	251.54	259.36	306.39	328.87
12	152.52	197.92	275.04	266.34	272.19	324.10	344.54
13	158.23	206.31	290.42	281.14	285.02	341.81	360.21
14	163.94	214.70	305.80	295.94	297.85	359.52	375.88
15	169.65	223.09	321.18	310.74	310.68	377.23	391.55
16	175.36	231.48	336.56	325.54	323.51	394.94	407.22
17	181.07	239.87	351.94	340.34	336.34	412.65	422.89
18	186.78	248.26	367.32	355.14	349.17	430.36	438.56
19	192.49	256.65	382.70	369.94	362.00	448.07	454.23
20	198.20	265.04	398.08	384.74	374.83	465.78	469.90
22	209.62	281.82	426.04	413.76	400.49	498.58	502.70
24	221.04	298.60	454.00	442.78	426.15	531.38	535.50
26	232.46	315.38	481.96	471.80	451.81	564.18	568.30
28	243.88	332.16	509.92	500.82	477.47	596.98	601.10
30	255.30	348.94	537.88	529.84	503.13	629.78	633.90
32	266.72	365.72	565.84	558.86	528.79	662.58	666.70
34	278.14	382.50	593.80	587.88	554.45	695.38	699.50
36	289.56	399.28	621.76	616.90	580.11	728.18	732.30

Table continues overleaf

ZONES AND RATES

Calculate the Price
of Your Shipment

Optional
Services

Surcharges

Customs
Services

Service Capability
and Rating Zones

Export
Services

Import
Services

Domestic
Services

Export rates by zone and product

DHL EXPRESS WORLDWIDE

Weight in lb	Zone 1	Zone 2	Zone 3	Zone 4	Zone 5	Zone 6	Zone 7
38	300.98	416.06	649.72	645.92	605.77	760.98	765.10
40	312.40	432.84	677.68	674.94	631.43	793.78	797.90
42	323.82	449.62	702.86	703.96	657.09	826.58	830.70
44	335.24	466.40	728.04	732.98	682.75	859.38	863.50
46	346.66	483.18	753.22	762.00	708.41	892.18	896.30
48	358.08	499.96	778.40	791.02	734.07	924.98	929.10
50	369.50	516.74	803.58	820.04	759.73	957.78	961.90
52	380.92	533.52	828.76	849.06	785.39	990.58	994.70
54	392.34	550.30	853.94	878.08	811.05	1,023.38	1,027.50
56	403.76	567.08	879.12	907.10	836.71	1,056.18	1,060.30
58	415.18	583.86	904.30	936.12	862.37	1,088.98	1,093.10
60	426.60	600.64	929.48	965.14	888.03	1,121.78	1,125.90
80	540.80	768.44	1,181.28	1,255.34	1,173.03	1,449.78	1,453.90
100	655.00	936.24	1,433.08	1,545.54	1,458.03	1,777.78	1,781.90
120	769.20	1,104.04	1,684.88	1,835.74	1,743.03	2,105.78	2,109.90
140	883.40	1,271.84	1,936.68	2,125.94	2,028.03	2,433.78	2,437.90
For each additional 1 lb							
From 20.1 to 40	5.71	8.39	13.98	14.51	12.83	16.40	16.40
From 40.1 to 60	5.71	8.39	12.59	14.51	12.83	16.40	16.40
From 60.1 to 140	5.71	8.39	12.59	14.51	14.25	16.40	16.40
From 140.1 to 600	5.71	8.39	12.59	14.51	14.25	16.40	16.40
From 600.1 to 6,600*	5.82	8.70	13.06	15.96	14.51	18.03	18.03

DHL Express 12:00 – Guaranteed delivery before 12:00 on the next possible working day to over 147 countries worldwide.

Add 7.00 USD to the DHL Express Worldwide prices.

DHL Express 9:00 (10:30 to the USA) – Guaranteed delivery before 9:00 on the next possible working day to over 89 countries worldwide. **Add 18.00 USD** to the DHL Express Worldwide prices.

Weights are rounded up to the nearest full 1 lb.

Rates are in USD and exclude customs duties, taxes, clearance-related charges, VAT and all surcharges.

Terms and conditions apply – see mydhl.express.dhl for details.

*DHL Express does not accept shipments exceeding 6,600 lb, or containing pieces exceeding 2,200 lb or 118 in in length, and/or not meeting DHL standards for packing. Refer to our Packing Guide on mydhl.express.dhl. These network restrictions are subject to change with 30 days' notice.

ZONES AND RATES

Calculate the Price
of Your Shipment

Optional
Services

Surcharges

Customs
Services

Service Capability
and Rating Zones

Export
Services

Import
Services

Domestic
Services

Import rates by zone and product

DHL EXPRESS WORLDWIDE IMPORT

Weight in lb	Zone 1	Zone 2	Zone 3	Zone 4	Zone 5	Zone 6	Zone 7
Documents only up to 4 lb							
1	89.49	101.90	114.13	112.96	130.03	144.05	167.78
2	97.87	119.57	131.80	130.45	150.99	166.34	192.93
3	106.26	137.24	149.47	147.95	171.98	188.64	218.10
4	114.65	154.91	167.14	165.45	192.97	210.94	243.27
Documents from 4 lb and non-documents from 1 lb							
1	90.33	104.87	117.46	112.96	131.26	148.36	169.36
2	98.72	122.88	135.46	130.45	152.24	170.66	194.52
3	107.11	140.89	153.47	147.95	173.23	192.96	219.69
4	115.50	158.90	171.48	165.45	194.22	215.26	244.86
5	123.89	176.91	189.50	182.93	215.18	237.55	270.01
6	132.28	194.91	207.50	200.41	236.17	259.84	295.16
7	140.67	212.91	225.50	217.89	257.16	282.13	320.31
8	149.06	230.91	243.50	235.37	278.15	304.42	345.46
9	157.45	248.91	261.50	252.85	299.14	326.71	370.61
10	165.84	266.91	279.50	270.33	320.13	349.00	395.76
11	174.23	284.92	297.51	287.81	341.12	371.30	420.92
12	182.62	302.93	315.52	305.29	362.11	393.60	446.08
13	191.01	320.94	333.53	322.77	383.10	415.90	471.24
14	199.40	338.95	351.54	340.25	404.09	438.20	496.40
15	207.79	356.96	369.55	357.73	425.08	460.50	521.56
16	216.18	374.97	387.56	375.21	446.07	482.80	546.72
17	224.57	392.98	405.57	392.69	467.06	505.10	571.88
18	232.96	410.99	423.58	410.17	488.05	527.40	597.04
19	241.35	429.00	441.59	427.65	509.04	549.70	622.20
20	249.74	447.01	459.60	445.13	530.03	572.00	647.36
22	266.52	483.03	495.62	480.09	572.01	616.58	694.90
24	283.30	519.05	531.64	515.05	613.99	661.16	742.44
26	300.08	555.07	567.66	550.01	655.97	705.74	789.98
28	316.86	591.09	603.68	584.97	697.95	750.32	837.52
30	333.64	627.11	639.70	619.93	739.93	794.90	885.06
32	350.42	663.13	675.72	654.89	781.91	839.48	932.60
34	367.20	699.15	711.74	689.85	823.89	884.06	980.14
36	383.98	735.17	747.76	724.81	865.87	928.64	1,027.68

Table continues overleaf

ZONES AND RATES

Calculate the Price
of Your Shipment

Optional
Services

Surcharges

Customs
Services

Service Capability
and Rating Zones

Export
Services

Import
Services

Domestic
Services

Import rates by zone and product

DHL EXPRESS WORLDWIDE IMPORT

Weight in lb	Zone 1	Zone 2	Zone 3	Zone 4	Zone 5	Zone 6	Zone 7
38	400.76	771.19	783.78	759.77	907.85	973.22	1,075.22
40	417.54	807.21	819.80	794.73	949.83	1,017.80	1,122.76
42	434.32	843.21	853.06	829.03	991.81	1,062.38	1,170.30
44	451.10	879.21	886.32	863.33	1,033.79	1,106.96	1,217.84
46	467.88	915.21	919.58	897.63	1,075.77	1,151.54	1,265.38
48	484.66	951.21	952.84	931.93	1,117.75	1,196.12	1,312.92
50	501.44	987.21	986.10	966.23	1,159.73	1,240.70	1,360.46
52	518.22	1,023.21	1,019.36	1,000.53	1,201.71	1,285.28	1,408.00
54	535.00	1,059.21	1,052.62	1,034.83	1,243.69	1,329.86	1,455.54
56	551.78	1,095.21	1,085.88	1,069.13	1,285.67	1,374.44	1,503.08
58	568.56	1,131.21	1,119.14	1,103.43	1,327.65	1,419.02	1,550.62
60	585.34	1,167.21	1,152.40	1,137.73	1,369.63	1,463.60	1,598.16
80	753.14	1,537.61	1,494.40	1,480.73	1,789.43	1,909.40	2,073.56
100	920.94	1,908.01	1,836.40	1,823.73	2,209.23	2,355.20	2,548.96
120	1,088.74	2,278.41	2,178.40	2,166.73	2,629.03	2,801.00	3,024.36
140	1,256.54	2,648.81	2,520.40	2,509.73	3,048.83	3,246.80	3,499.76
For each additional 1 lb							
From 20.1 to 40	8.39	18.01	18.01	17.48	20.99	22.29	23.77
From 40.1 to 60	8.39	18.00	16.63	17.15	20.99	22.29	23.77
From 60.1 to 140	8.39	18.52	17.10	17.15	20.99	22.29	23.77
From 140.1 to 600	8.53	18.52	17.10	17.15	21.36	24.07	24.21
From 600.1 to 6,600*	8.70	18.87	17.42	18.87	21.76	24.51	24.66

DHL Express 12:00 – Guaranteed delivery before 12:00 on the next possible working day from over 147 countries worldwide.

Add 7.00 USD to the DHL Express Worldwide Import prices.

DHL Express 9:00 – Guaranteed delivery before 9:00 on the next possible working day from over 89 countries worldwide.

Add 18.00 USD to the DHL Express Worldwide Import prices.

Weights are rounded up to the nearest full 1 lb.

Rates are in USD and exclude customs duties, taxes, clearance-related charges, VAT and all surcharges. Terms and conditions apply – see mydhl.express.dhl for details.

*DHL Express does not accept shipments exceeding 6,600 lb, or containing pieces exceeding 2,200 lb or 118 in in length, and/or not meeting DHL standards for packing. Refer to our Packing Guide on mydhl.express.dhl. These network restrictions are subject to change with 30 days' notice.

ZONES AND RATES

Calculate the Price
of Your Shipment

Optional
Services

Surcharges

Customs
Services

Service Capability
and Rating Zones

Export
Services

Import
Services

Domestic
Services

Domestic rates by zone and product

DHL EXPRESS DOMESTIC

Weight in lb	Zone 1
1	13.19
2	15.83
3	18.47
4	21.11
5	23.75
6	26.39
7	29.03
8	31.67
9	34.31
10	36.95
11	39.59
12	42.23
13	44.87
14	47.51
15	50.15
16	52.79
17	55.43
18	58.07
19	60.71
20	63.35
22	68.63
24	73.91
26	79.19
28	84.47
30	89.75

Weight in lb	Zone 1
32	95.03
34	100.31
36	105.59
38	110.87
40	116.15
42	121.43
44	126.71
46	131.99
48	137.27
50	142.55
52	147.83
54	153.11
56	158.39
58	163.67
60	168.95
80	221.75
100	274.55
120	327.35
140	380.15
For each additional 1 lb	
From 20.1 to 40	2.64
From 40.1 to 60	2.64
From 60.1 to 140	2.64
From 140.1 to 600	2.64
From 600.1 to 6,600*	2.64

Weights are rounded up to the nearest full lb.

Rates are in USD and exclude VAT and all surcharges.
Terms and conditions apply – see mydhl.express.dhl for details.

*DHL Express does not accept shipments exceeding 6,600 lb, or containing pieces exceeding 2,200 lb or 118 in in length, and/or not meeting DHL standards for packing. Refer to our Packing Guide on mydhl.express.dhl. These network restrictions are subject to change with 30 days' notice.

READY TO SHIP?



Get a quote



+1 (721) 544-5080



Chat



xm.contact@dhl.com



Find your nearest DHL Service Point

DHL Sint Maarten N.V.
57 Welfare Rd
St. Maarten

Valid: 1st January 2023
For public use

The information in this guide is correct as of 1st January 2023. DHL reserves the right to amend or modify any of the information at any time.

